

D-Link Quick Installation Guide

This product works with the following operating systems: **Windows XP, Windows 2000**



DWL-G650M

Super G™ MIMO
Wireless Notebook Adapter

Before You Begin

You must have at least the following:

- A laptop computer with an available 32-bit Cardbus slot
- At least a 500MHz processor and 64MB of memory
- Cardbus Controller properly installed and working in the laptop computer
- An 802.11g Access Point (for Infrastructure Mode)

Check Your Package Contents

These are the items included with your DWL-G650M purchase:



**DWL-G650M Super G™ MIMO
Wireless Notebook Adapter**



CD-ROM (containing Drivers and Manual)

If any of the above items are missing, please contact your reseller

1

Installing the Drivers

Turn on the computer and Insert the D-Link Super G™ MIMO DWL-G650M Driver CD in the CD-ROM drive.

The step-by-step instructions that follow are shown in Windows XP. The steps and screens are similar for the other Windows 2000

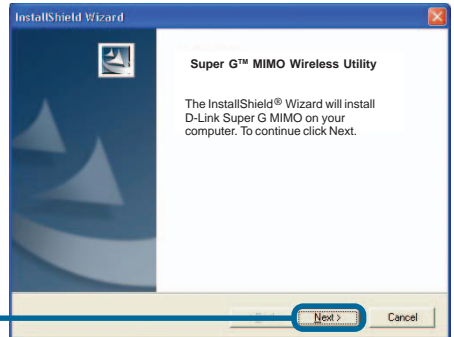
Do NOT install the DWL-G650M Notebook Adapter into your computer before installing the driver software from the D-Link CD!

Click **Install Drivers**

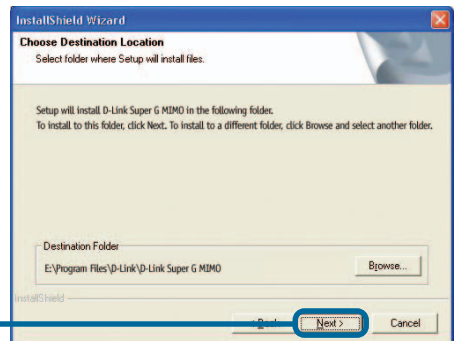
If the CD Autorun function does not automatically start on your computer, type "D:\Drivers\setup.exe." If it does start, proceed to the next screen.



Click **Next**

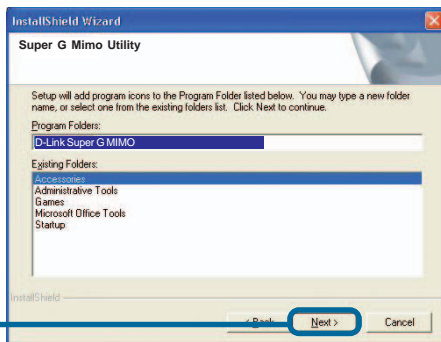


Click **Next**

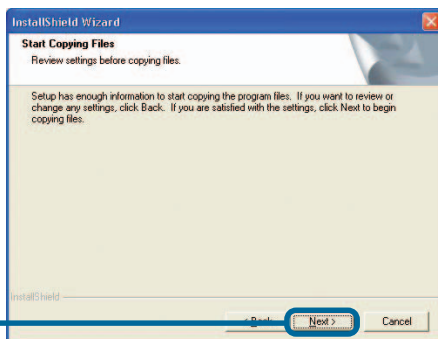


1

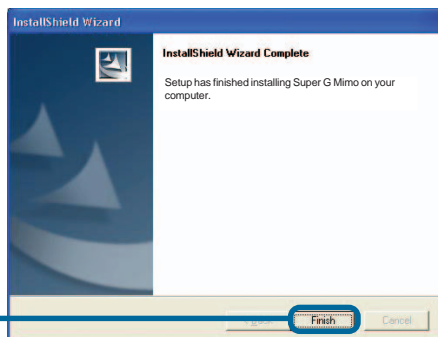
Installing the Drivers (continued)



Click **Next**



Click **Next**



Click **Finish**

Shut down your computer

Remember to leave the DWL-G650M Driver CD in the CD-ROM drive.

2

Installing the DWL-G650M Wireless Notebook Adapter in Your Laptop

- A. **Make sure to turn off the laptop computer.**
- B. Locate the Cardbus slot on your laptop computer.
- C. Gently insert the DWL-G650M into the Cardbus slot in your laptop computer as shown below.



32-bit connector

This is the connector that fits into the Cardbus slot of your laptop.

Link

Indicates that the DWL-G650M is properly installed when the computer is on.

Activity LED

Blinks when data is being transmitted.

Antenna

Used to wirelessly connect to 802.11g networks.



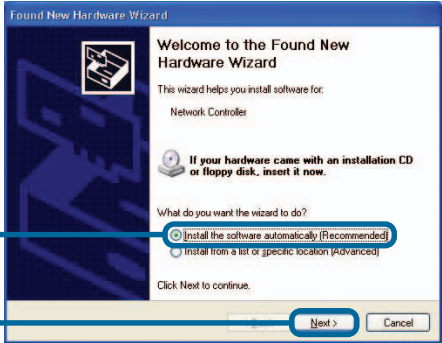
3

Completing the Installation

When you restart your computer this **Found New Hardware Wizard (Windows XP)** screen may appear:

Select **Install the software automatically (Recommended)**

Click **Next**



Click **Finish** to finalize the installation.

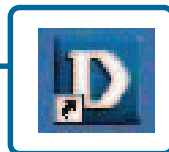


4

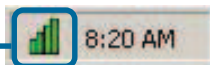
Your Installation is Complete!

After the installation, the **Configuration Utility** will automatically start and the utility icon will appear in the bottom right hand corner of the desktop screen (systray). **If this icon appears GREEN, then you have successfully installed the DWL-G650M, are connected to a wireless network and are ready to communicate!**

If the utility icon does not appear, double-click the **shortcut icon** that has appeared on your desktop.



Double-click the **utility icon** to use the configuration utility.



Appendix

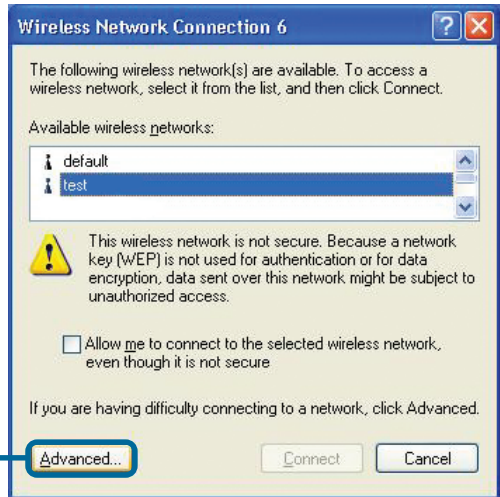
WPA-PSK:

WPA-Personal is directed at home users who do not have the server based equipment required for user authentication. The method of authentication is similar to WEP because you define a "Pre-Shared Key" on the wireless router/AP. Once the pre-shared key is confirmed and satisfied on both the client and access point, then access is granted. the encryption method used is referred to as the Temporal Key Integrity Protocol (TKIP), which offers per-packet dynamic hashing. It also includes an integrity checking feature which ensures that the packets were not tampered with during wireless transmission.

Appendix A - Using the Configuration Utility

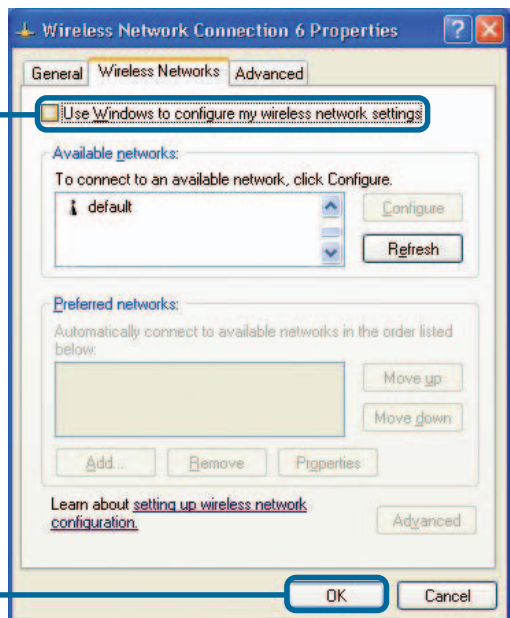
For Windows XP, if you wish to use the Super G™ MIMO utility, please complete the following steps:

Click the **XP Networking icon** to use the Zero Configuration Wireless Settings.



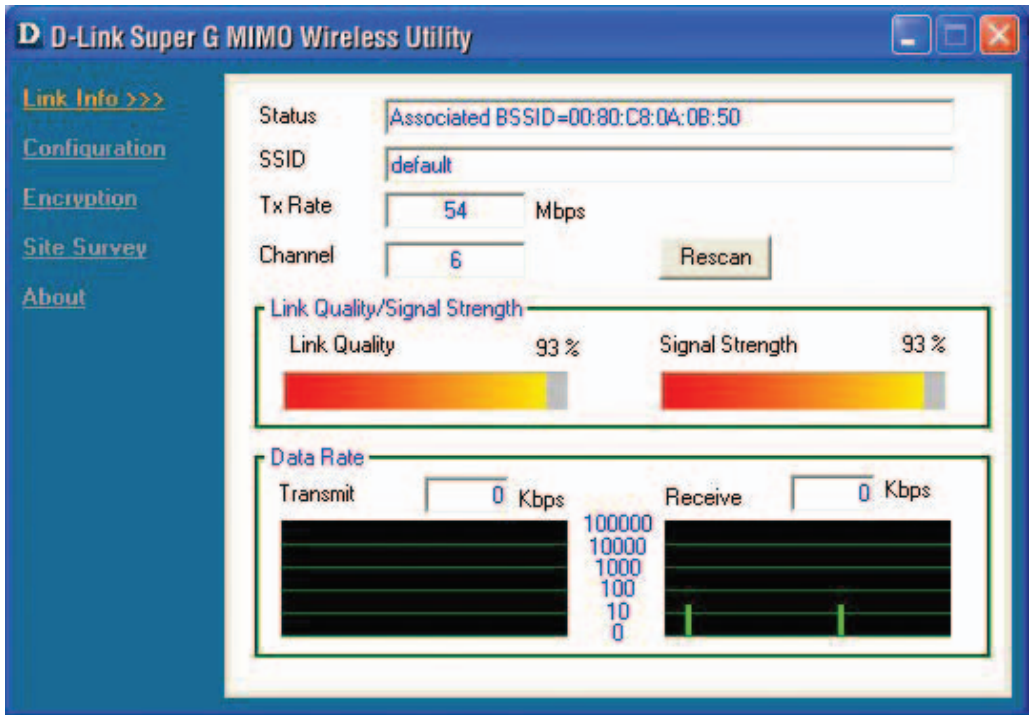
Click **Advanced**

Uncheck "Use Windows to configure my wireless network settings."



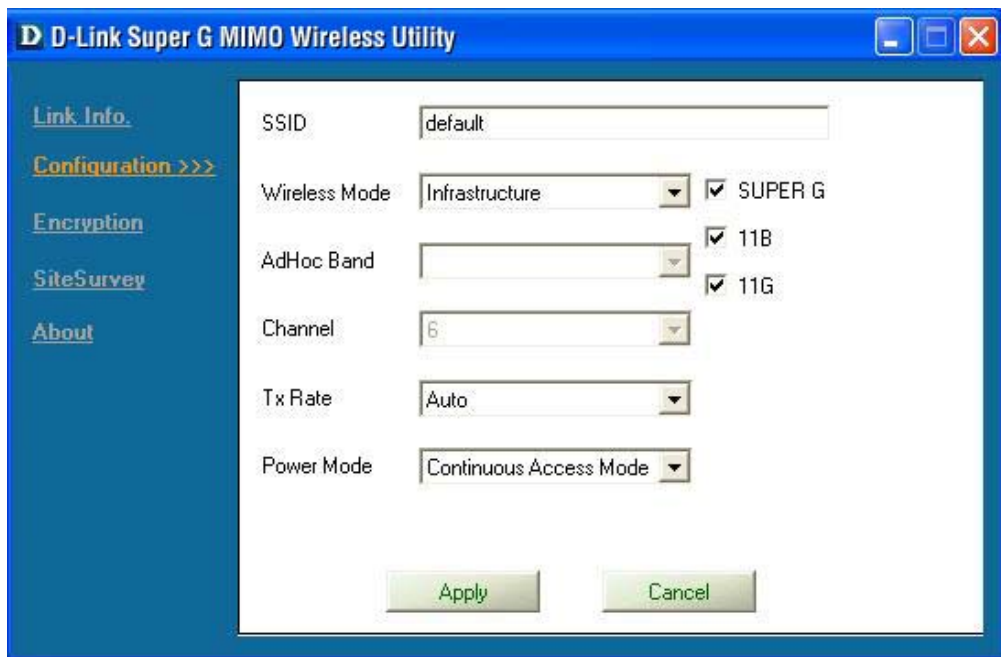
Click **OK**

Appendix A - Using the Configuration Utility (continued)



- **Status:** Displays the MAC Address of the Access Point that is associated with the DWL-G650M.
- **SSID:** The Service Set Identifier is the name assigned to the wireless network. The factory SSID setting is set to **default**.
- **TxRate:** The default setting is **Auto**; meaning, TxRate settings are automatically determined by the DWL-G650M depending on the distance from the access point.
- **Channel:** Displays the channel information. By default, the channel is set to 6 and selection is automatically determined by the DWL-G650M.
- **Link Quality / Signal Strength:** Displays the Link Quality for the DWL-G650M wireless connection to the access point. The Signal Strength represents the wireless signal between the access point and the DWL-G650M. The percentage coincides with the graphical bar.
- **Data Rate:** Graphically displays the statistics of data transmitted and received.

Appendix A - Using the Configuration Utility (continued)



- **SSID:** The Service Set Identifier is the name assigned to the wireless network. The factory SSID setting is set to **default**. Make changes here to match the SSID on existing Wireless Router or Access Point.
- **Wireless Mode:** The factory setting is set to **Infrastructure**. Ad-Hoc mode is used for peer-to-peer networking.
- **AdHoc Band:** Specifies the Ad-Hoc Band used whether 802.11b/g when setting up an Ad-Hoc network.
- **Channel:** By default, the channel is set to **6**. Channel selection is automatically adjusted by the DWL-G650M depending on the channel setting of the access point selected for association. To change the channel settings, the **Wireless Mode** must be set to **Ad-hoc**.
- **TxRate:** You can adjust the transmission rate to get the best signal possible depending on your usage and your environment.
- **Power Mode:** By default, Power Mode is set to Continuous Access Mode.
 - **Continuous Access Mode** — this default setting consumes the most power.
 - **Maximum Power Save** — this setting consumes the least power.
 - **Power Save** — this setting consumes a moderate amount of power.
- **Support Band:** By default, the DWL-G650M will scan & connect to an 802.11b/g network.

Appendix B - IP Address Configuration

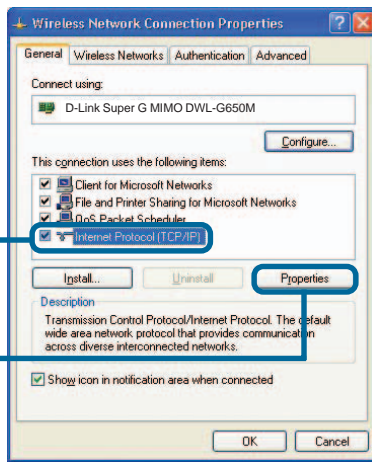
To connect to a network, make sure the proper network settings are configured for DWL-G650M.

Microsoft Windows XP:

Go to **Start**, right click on **My Network Places**, select **Properties**, and **Double-click** on the **Network Connection** associated with the DWL-G650M.

Click **Internet Protocol (TCP/IP)**

Click **Properties**



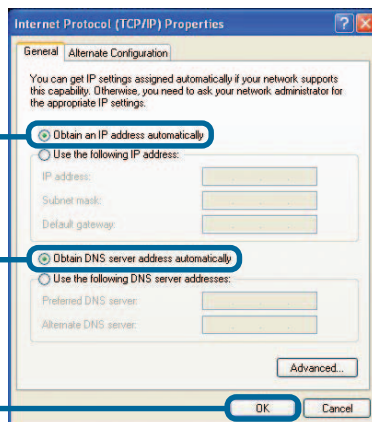
Dynamic IP address setup

Used when a **DHCP** server is available on the local network. (i.e. Router)

Select **Obtain an IP address automatically** (if the Wireless Router or Access Point has DHCP server enabled)

Select **Obtain DNS server address automatically**

Click **OK**



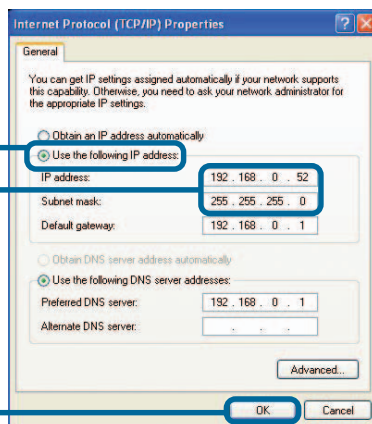
Static IP address setup

Used when a **DHCP** server is not available on the local network.

Select **Use the following IP address**

IP address: **192.168.0.52**
Subnet mask: **255.255.255.0**

Click **OK**



Input a static IP address in the same range as the Wireless Router or Access Point.

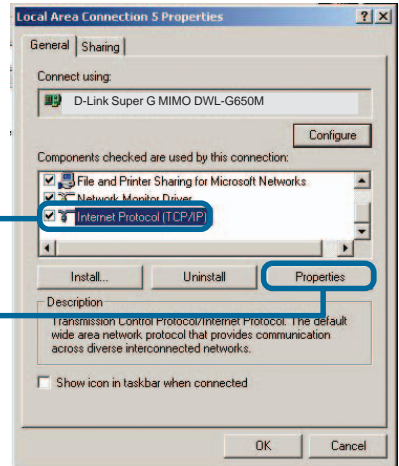
Appendix B - IP Address Configuration

Windows 2000 users:

Go to **Start > Settings > Network and Dial-up Connections** > Double-click on the **Local Area Connection** associated with the DWL-G650M > select **Properties**

Click **Internet Protocol (TCP/IP)**

Click **Properties**



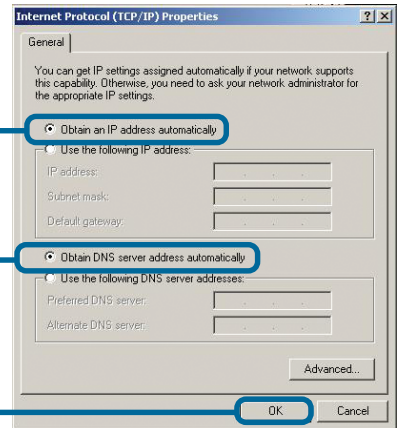
Dynamic IP address setup

Used when a **DHCP server** is available on the local network. (i.e. Router)

Select **Obtain an IP address automatically** (if the Wireless Router or Access Point has DHCP server enabled)

Select **Obtain DNS server address automatically**

Click **OK**



Static IP address setup

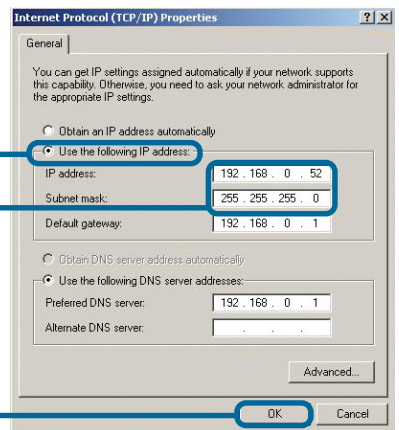
Used when a **DHCP server** is not available on the local network.

Select **Use the following IP address**

IP address: 192.168.0.52
Subnet mask: 255.255.255.0

Input a static IP address in the same range as the Wireless Router or Access Point.

Click **OK**



Technical Support

You can find software updates and user documentation on the D-Link website. D-Link provides free technical support for customers within the United States and within Canada for the duration of the warranty period on this product.

U.S. and Canadian customers can contact D-Link technical support through our web site, or by phone.

Tech Support for customers within the United States:

D-Link Technical Support over the Telephone:

(877) 453-5465

Monday through Friday 6:00am to 6:00pm.

D-Link Technical Support over the Internet:

<http://support.dlink.com>

email:support@dlink.com

Tech Support for customers within Canada:

D-Link Technical Support over the Telephone:

(800) 361-5265

Monday to Friday 7:30am to 12:00am EST

D-Link Technical Support over the Internet:

<http://support.dlink.ca>

email:support@dlink.ca

When contacting technical support, please provide the following information:

- *Serial number of the unit*
- *Model number or product name*

The D-Link logo is displayed in a bold, blue, sans-serif font. The letter 'D' is significantly larger than the other letters, and a registered trademark symbol (®) is positioned to the upper right of the 'k'.