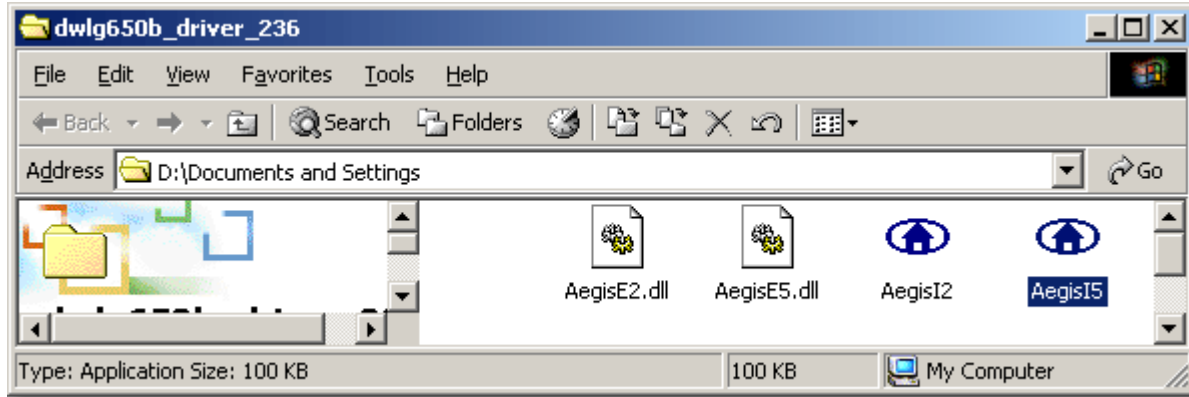


How do I install the WPA supplicant for my DWL-G520/G650 driver version 2.36?

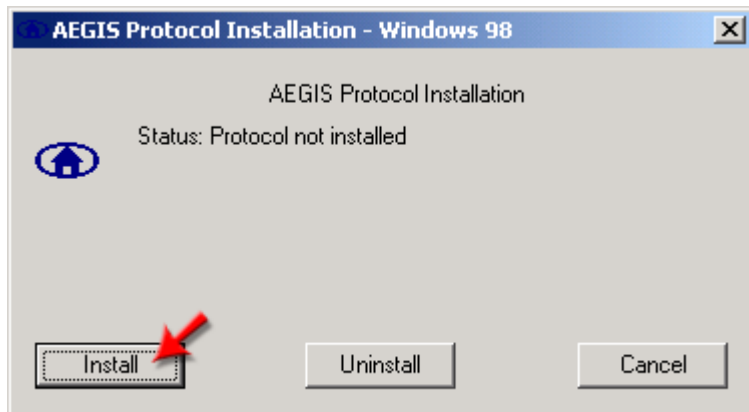
After installing the Utility and Card per instructions with the 2.36 drivers, you will need to install the Aegis software to use WPA.

Windows 98 Second Edition/ME

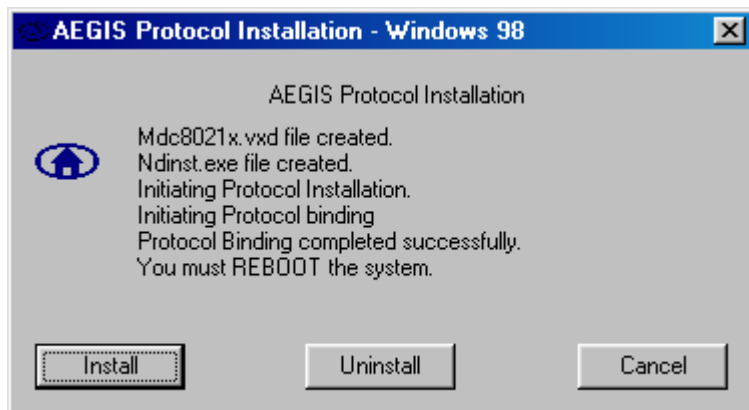
Step 1 Download and extract the WPA supplicant for the 2.36 driver.



Step 2 Double-click the **AegisI2.exe** file to install the files necessary to support WPA.

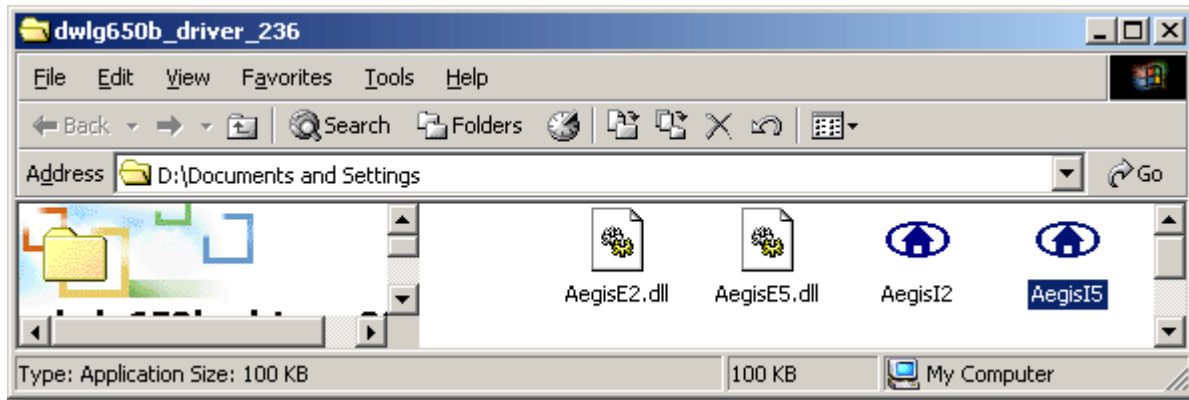


Step 3 You should see **Protocol Binding Completed Successfully**. Close the Utility by clicking the **X** in the upper-right of the window and restart your computer. After rebooting, you should now be able to use the WPA feature with your DWL-G520/G650 and your WPA-enabled Access Point/wireless router.

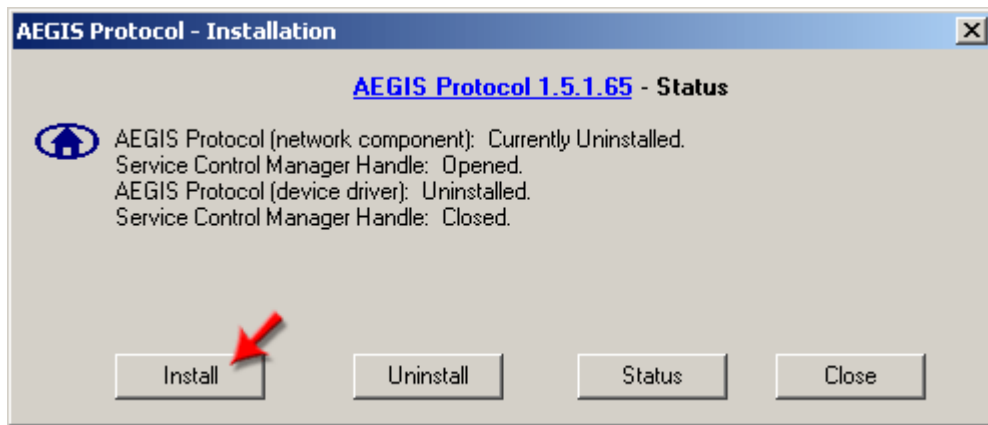


Windows 2000/XP

Step 1 Download and extract the WPA supplicant for the 2.36 driver.



Step 2 Double-click the **AegisI5.exe** file to install the files necessary to support WPA.



Step 3 You should see **Protocol Binding Completed Successfully**. Close the Utility by clicking **Close** and restart your computer. After rebooting, you should now be able to use the WPA feature with your DWL-G520/G650 and your WPA-enabled Access Point/wireless router.

