

D-Link®

Quick Installation Guide

This product works with the following operating system software: **Windows XP, Windows 2000, Windows Me, Windows 98SE**



DWL-G520

AirPlus Xtreme G 2.4GHz
Wireless PCI Adapter

Before You Begin

You must have at least the following:

- A desktop computer with an available 32-bit PCI slot
- At least a 300 MHz processor and 32MB of memory
- An 802.11g or 802.11b Access Point (for Infrastructure Mode) or another 802.11g or 802.11b wireless adapter (for Ad-Hoc; Peer-to-Peer networking mode.)

Check Your Package Contents

These are the items included with your DWL-G520 purchase:



**DWL-G520 AirPlus Xtreme G 2.4GHz Wireless
PCI Adapter**



CD-ROM (containing Drivers, Manual and Warranty)

If any of the above items are missing, please contact your reseller.

1

Insert the D-Link CD-ROM Into Your Computer

Turn on the computer and **Insert** the **D-Link AirPlus Xtreme G DWL-G520 Driver CD** in the CD-ROM drive.

The step-by-step instructions that follow are shown in **Windows XP**. The steps and screens are similar for the other Windows operating systems

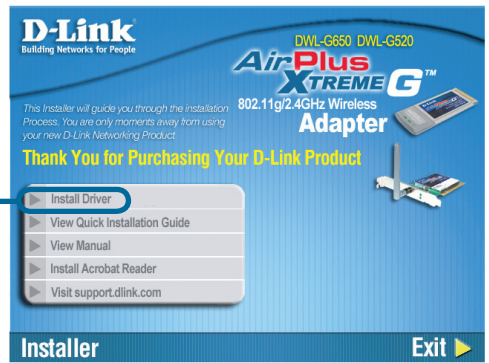


Do **NOT** install the **DWL-G520 Wireless PCI Adapter** into your computer before installing the **driver software** from the **D-Link CD!**

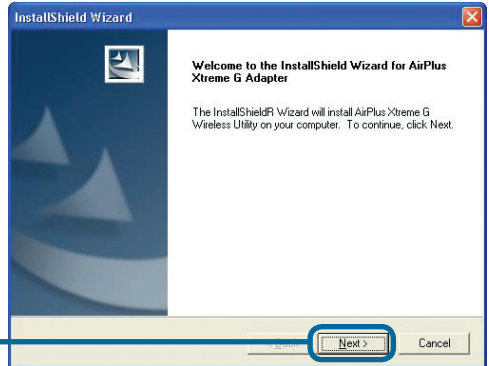
1 Continued...

If the CD Autorun function does not automatically start on your computer, type "D:\Drivers\setup.exe." If it does start, proceed to the next screen.

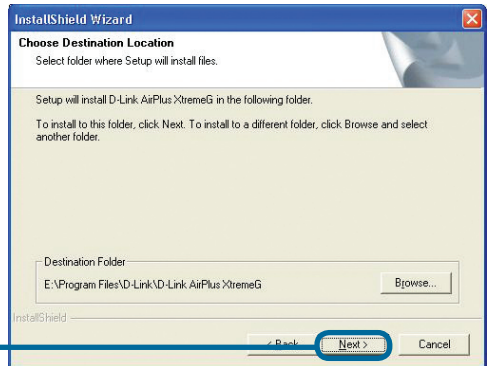
Click **Install Driver**



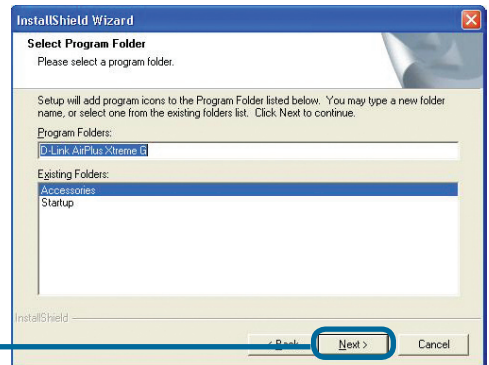
Click **Next**



Click **Next**

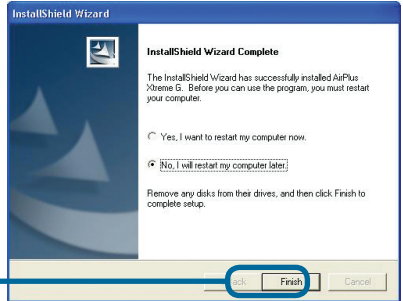
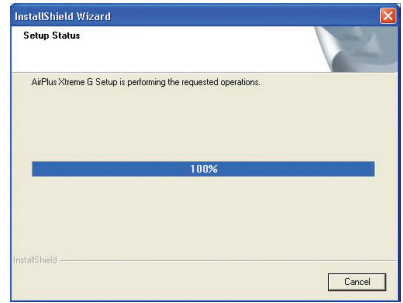


Click **Next**



1

Continued...



Click **Finish**

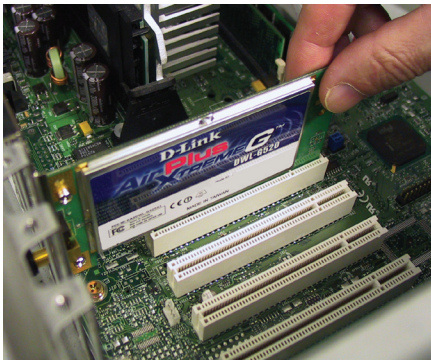
Shut down your computer

Remember to leave the DWL-G520 Driver CD in the CD-ROM drive.

2

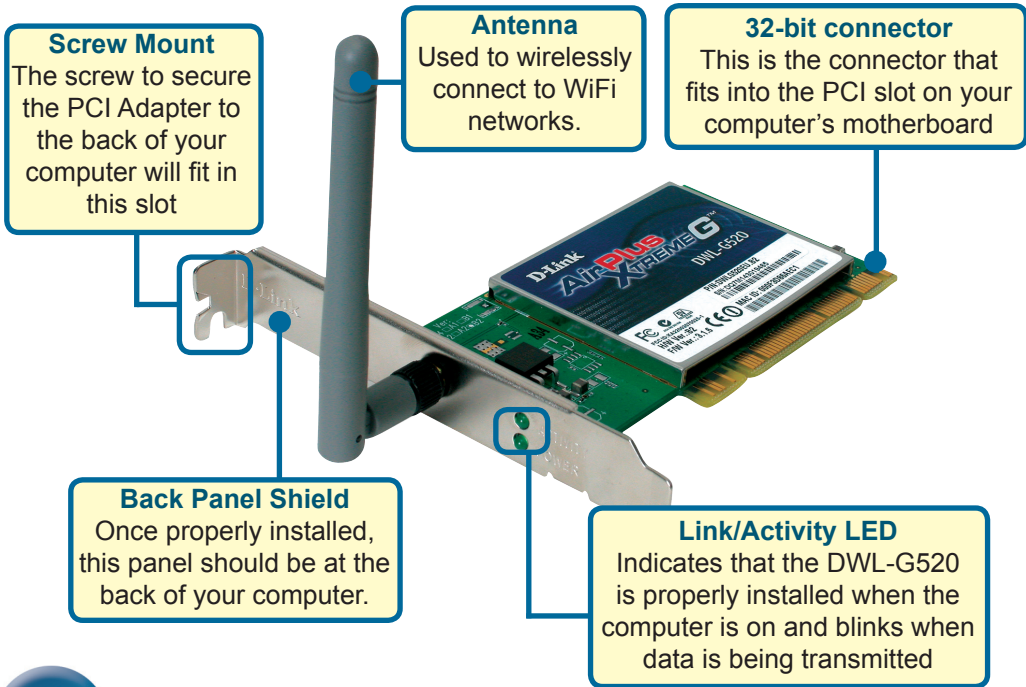
Installing the DWL-G520 Wireless PCI Adapter in Your Computer

- A. **Make sure to turn off your computer and unplug the power cord.** Remove the back cover of the computer.
- B. **Install the DWL-G520 carefully** and firmly seat it into an available PCI slot (which is usually “white” or “cream” colored).



! To avoid damage caused by static electricity, make sure to properly ground yourself by first touching a metal part of your computer to discharge any static electricity before working with the DWL-G520 Wireless PCI Adapter.

- C. Secure the DWL-G520 back panel shield with a screw.
- D. Replace the computer's cover.
- E. Place the computer back in its normal position.
- F. Attach the DWL-G520's antenna to the socket on the back panel shield.



3

Restart Your Computer

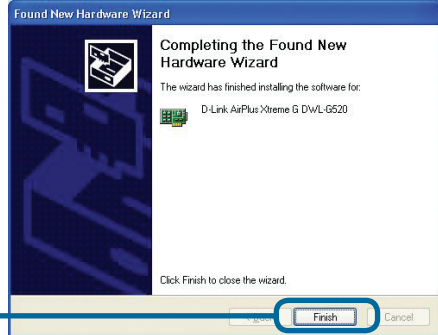
When you restart your computer this **Found New Hardware Wizard (Windows XP)** screen may appear:

Select **Install the software automatically (Recommended)**

Click **Next**



Click **Finish** to finalize the installation.



4

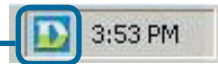
Your Installation is Complete!

After you've continued in Windows 2000, ME, or 98SE, the D-Link AirPlus Xtreme G DWL-G520 **Configuration Utility** will automatically start and the utility icon will appear in the bottom right hand corner of the desktop screen (systray). **If this icon appears GREEN, then you have successfully installed the DWL-G520, are connected to a wireless network and are ready to communicate!**

If the utility icon does not appear, double-click the **shortcut icon** that has appeared on your desktop.



Double-click the **utility icon** to use the configuration utility.



Appendix

Wi-Fi Protected Access (WPA), is a Wi-Fi standard that was designed to improve upon the security features of WEP. The technology is designed to work with existing Wi-Fi products that have been enabled with WEP (i.e., as a software upgrade to existing hardware), but the technology includes two improvements over WEP:

- 1) Improved data encryption through Temporal Key Integrity Protocol (TKIP)
- 2) User authentication using Extensible Authentication Protocol (EAP) via a RADIUS server.

Note that WPA is an interim standard that will be replaced with the IEEE's 802.11i standard upon its completion.

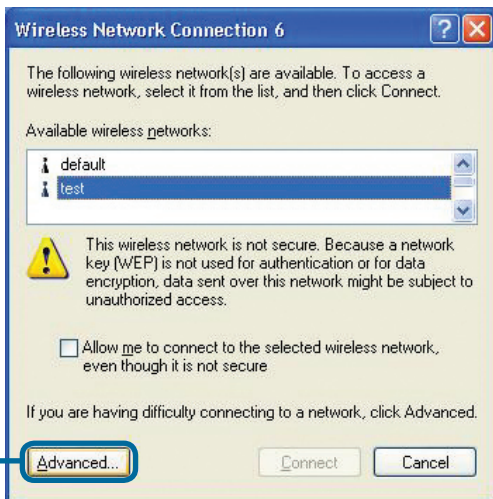
WPA - Wi-Fi Protected Access authorizes and authenticates users onto the wireless network. WPA uses stronger security than WEP and is based on a key that changes automatically at a regular interval. This mode requires a RADIUS server in the network.

WPA-PSK - Pre-Shared Key mode means that the wireless client and the router must have the same passphrase in order to establish the wireless connection. A RADIUS server is not required with this mode.

Appendix

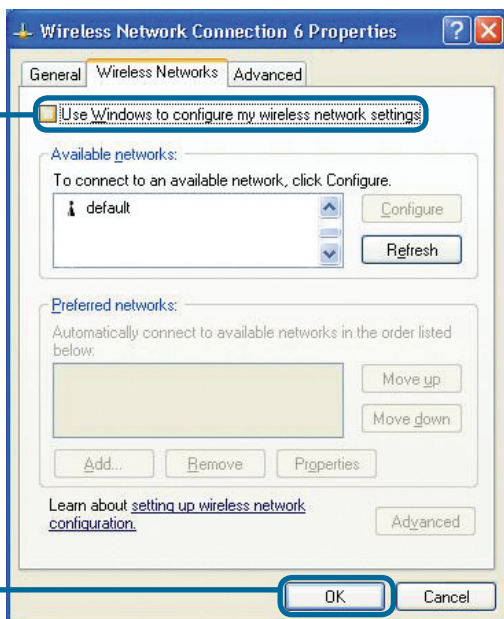
For Windows XP, if you wish to use the AirPlus Xtreme G utility, please do the following steps.

Click the **XP Networking icon** to use the Zero Configuration Wireless Settings.



Click **Advanced**

Uncheck "Use Windows to configure my wireless network settings."



Click **OK**

Appendix (Cont.)

Using the Configuration Utility

A. Status: Displays the MAC Address of the Access Point that is associated with the DWL-G520.

B. SSID: The Service Set Identifier is the name assigned to the wireless network. The factory SSID setting is set to default.

C. Frequency: Displays the current frequency used by the current connection to the access point.

D. Wireless Mode: The factory setting is set to Infrastructure. Ad-Hoc mode is used for peer-to-peer networking.

D-Link AirPlus XtremeG Utility

Link Info

- A** Status: Associated BSSID=00:05:5D:89:CE:1F
- B** SSID: default
- C** Frequency: 802.11g
- D** Wireless Mode: Infrastructure
- E** Encryption: Enabled
- Authentication: []
- F** Tx Rate: 54.0 Mbps
- G** Channel: 7
- Rescan

Signal Quality

Signal Strength: 100%

Packet Count

Transmit	Receive
>500	
250	
0	

E. Encryption: Displays the current encryption status of the wireless connection.

F. TxRate: The default setting is Auto; meaning, TxRate settings are automatically determined by the DWL-G520 depending on the distance from the access point.

G. Channel: Displays the channel information. By default, the channel is set to 6 and selection is automatically determined by the DWL-G520.

I. Packet Count: Graphically displays the statistics of data transmitted and received.

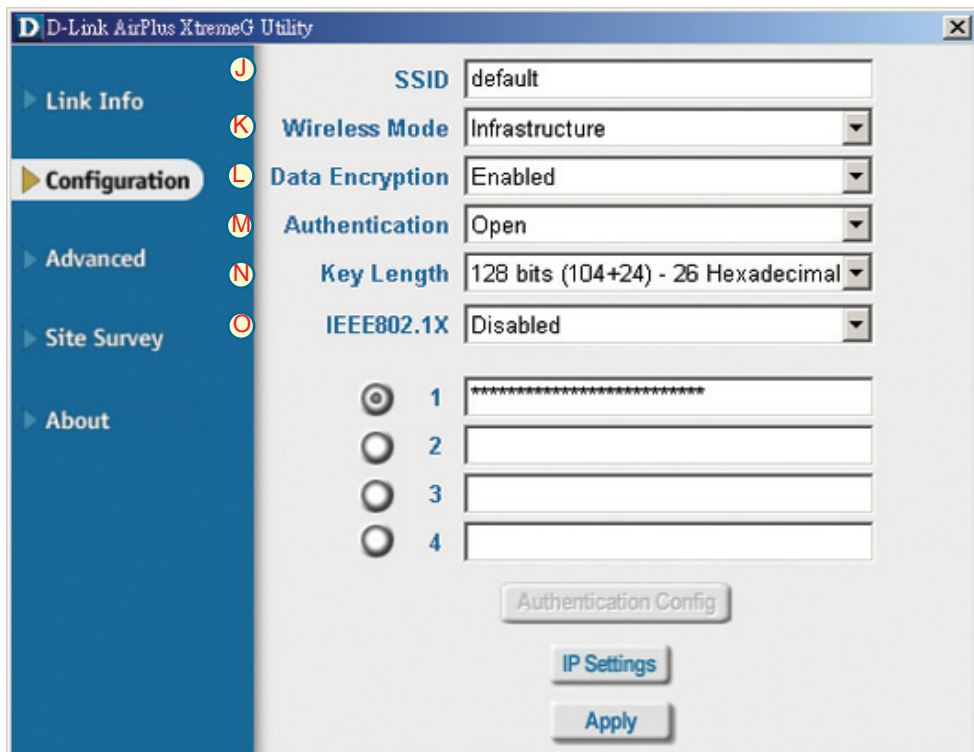
H. Signal Quality: Displays the Link Quality for the DWL-G520 wireless connection to the access point. The Signal Strength represents the wireless signal between the access point and the DWL-G520. The percentage coincides with the graphical bar.

Appendix (Cont.)

J. SSID: The Service Set Identifier is the name assigned to the wireless network. The factory SSID setting is set to default. Make changes here to match the SSID on existing Wireless Router or Access Point.

K. Wireless Mode: The factory setting is set to Infrastructure. Ad-Hoc mode is used for peer-to-peer networking.

L. Data Encryption: The default setting is set to Disable. The adapter supports WEP and AES when encryption is enabled.



M. Authentication: You can specify the authentication mode for the wireless network. The default setting is set to Open Authentication.

N. Key Length: When encryption is enabled, you will have the option to specify the level and key format of the encryption used. Select the appropriate Key Index: 1-4 and enter ACSII or hexadecimal digits in the appropriate field.

O. IEEE 802.1X: When encryption is enabled, you will have the option to specify the level and key format of the encryption used. Select the appropriate Key Index: 1-4 and enter ACSII or hexadecimal digits in the appropriate field.

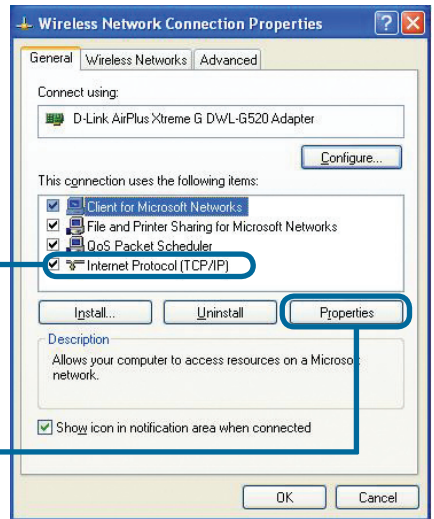
IP Address Configuration

To connect to a network, make sure the proper network settings are configured for DWL-G520.

For **Microsoft Windows XP**: Go to **Start** > right click on **My Network Places** > select **Properties** > Double-click on the **Network Connection** associated with the DWL-G520.

Click **Internet Protocol (TCP/IP)**

Click **Properties**



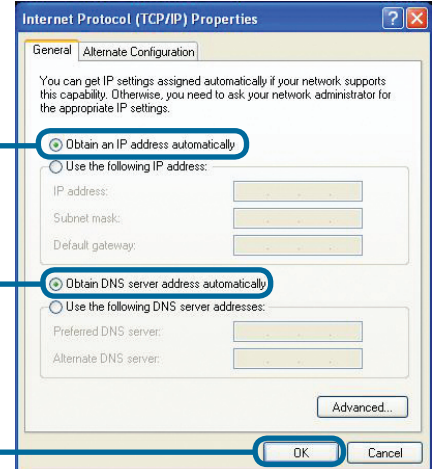
Dynamic IP Address setup

Used when a **DHCP server** is available on the local network. (i.e. Router)

Select **Obtain an IP address automatically** (if the Wireless Router or Access Point has DHCP server enabled)

Select **Obtain DNS server address automatically**

Click **OK**



Static IP Address setup

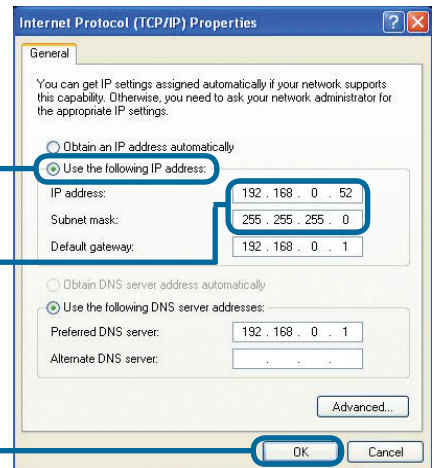
Used when a **DHCP server** is not available on the local network.

Select **Use the following IP address**

IP address: **192.168.0.52**
Subnet mask: **255.255.255.0**

Input a static IP address in the same range as the Wireless Router or Access Point.

Click **OK**

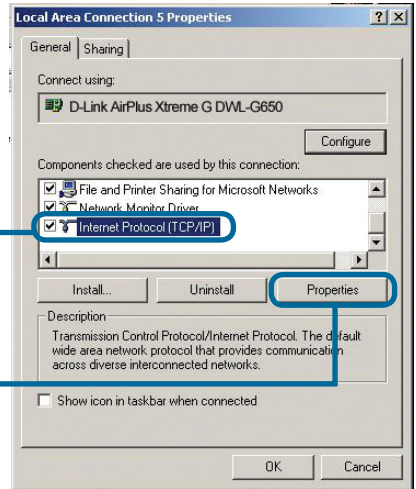


For Windows 2000 users:

Go to **Start > Settings > Network and Dial-up Connections** > Double-click on the **Local Area Connection** associated with the DWL-G520 > select **Properties**

Click **Internet Protocol (TCP/IP)**

Click **Properties**



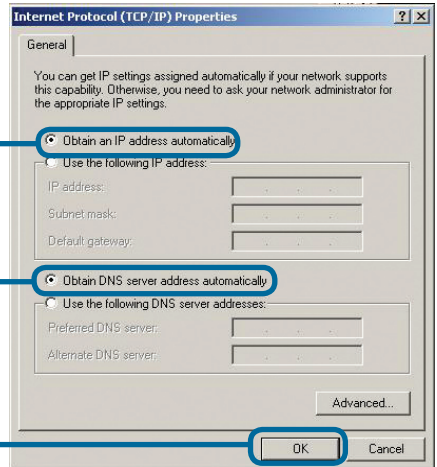
Dynamic IP Address setup

Used when a **DHCP server** is available on the local network. (i.e. Router)

Select **Obtain an IP address automatically** (if the Wireless Router or Access Point has DHCP server enabled)

Select **Obtain DNS server address automatically**

Click **OK**



Static IP Address setup

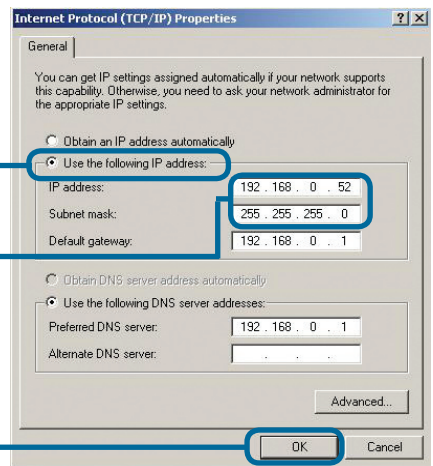
Used when a **DHCP server** is not available on the local network.

Select **Use the following IP address**

IP address: 192.168.0.52
Subnet mask: 255.255.255.0

Input a static IP address in the same range as the Wireless Router or Access Point.

Click **OK**



Technical Support

You can find software updates and user documentation on the D-Link website.

D-Link provides free technical support for customers within the United States and within Canada for the duration of the warranty period on this product.

U.S. and Canadian customers can contact D-Link technical support through our website, or by phone.

Tech Support for customers within the United States:

D-Link Technical Support over the Telephone:

(877) 453-5465

24 hours a day, seven days a week

D-Link Technical Support over the Internet:

<http://support.dlink.com>

email:support@dlink.com

Tech Support for customers within Canada:

D-Link Technical Support over the Telephone:

(800) 361-5265

Monday to Friday 8:30am to 9:00pm EST

D-Link Technical Support over the Internet:

<http://support.dlink.ca>

email:support@dlink.ca

Tech Support for customers within the United Kingdom & Ireland:

D-Link UK & Ireland Technical Support over the Telephone:

+44 (0)20 7365 8440 (United Kingdom)

+353 (0)12 421 061 (Ireland)

Monday to Friday 8:00 am to 10:00 pm

D-Link Technical Support over the Internet:

<http://www.dlink.co.uk>

D-Link®

Building Networks for People