

DWL-1750



- Ideal for Long Range Wireless Backbone Connection
- Rugged Outdoor Housing
- Enhanced Security with Built-in Firewall
- Point-to-Point and Point-to-Multipoint Bridging Modes

# AirPremier

## Outdoor 2.4GHz Wireless Bridge/Router

FOR  
OUTDOOR  
WLAN

LONG  
RANGE  
CONNECTION

BUILT-IN  
FIREWALL

SNMP  
MANAGEMENT  
SUPPORT

POWER  
OVER  
ETHERNET

D-Link, the industry pioneer in wireless networking, now offers economical wireless outdoor solutions. The D-Link AirPremier DWL-1750 is a 2.4GHz IEEE 802.11b-compliant Wireless Bridge/Router. The DWL-1750 can operate as a point-to-point or a point-to-multipoint bridge with static routing ability to link networks in different buildings. The D-Link AirPremier DWL-1750 is ideal for broadband telecommunication providers, enterprises, store merchants and small business owners to create wireless backbone networks. It has been designed and engineered for use at manufacturing plants, industrial locations, military bases, college and high school campuses, airports, golf courses, marinas and other outdoor Wireless LAN applications.

The D-Link AirPremier DWL-1750 is designed for harsh outdoor environments. With die-cast watertight housing and a built-in lightning protector, this is a robust outdoor Wireless Bridge/Router. It includes cost-effective Power-over-Ethernet (PoE) for supplying power to the AP when a power outlet is not easily available. And the unique outdoor remote-mounted design, makes for easy

installation. With a one-meter RF cable needed between the DWL-1750 and the external antenna, the DWL-1750 is a cost-effective outdoor solution for long distance communications. D-Link also provides a variety of outdoor antennas enabling the DWL-1750 to operate up to 25miles (40Km) in accordance with FCC regulations.

The DWL-1750 has MAC address-based access control and many other features for stronger security. With a built-in firewall, the DWL-1750 can work as a NAT inbound virtual server and provides IP based access control. Denial of Service (DoS) protection is also included with the DWL-1750 to prevent your wireless network from being hacked.

The DWL-1750 is easy to be managed by web-based user interface, Telnet, and RS-232 console configuration. SNMP (MIB I & MIB II) support also makes DWL-1750 a solid solution for enterprise wireless network managers.

# AirPremier

## Outdoor 2.4GHz Wireless Bridge/Router



DWL-1750

### SPECIFICATIONS

#### Standards:

IEEE 802.11b Direct Sequence Spread Spectrum (DSSS)

#### Frequency Range:

2.4-2.497MHz ISM band

#### Regulation Certifications

- FCC Part15
- ETSI 300/328

#### Data Rate & Modulation:

- 11Mbps (CCK)
- 5.5Mbps (CCK)
- 2Mbps (DQPSK)
- 1Mbps (DBPSK)

#### Transmit Power (excluding external antenna)

23dBm (200mW typically)

#### Receiver Sensitivity:

- < -84dBm @11Mbps
- < -90dBm @2Mbps

#### RF Connector:

Proprietary N-type (Reverse Polarity)

#### Interface:

- 1 ports 10Base-T/100Base-TX Ethernet for WAN/LAN
- UART for console

#### Protocol Supported:

- TCP/IP
- NAT/NAPT
- Virtual Server (NAT inbound server)
- DHCP client/server
- PPPoE
- Static Routing
- Ethernet Bridging

#### Security:

- 64/128-bit WEP (RC4)
- MAC address based access control
- 802.11b SSID hidden
- Denial Wireless 802.11b "ANY" station
- PPPoE authentication PAP/CHAP

#### Firewall:

- Built-in NAT firewall
- IP based Access Control
- Denial of Service (DoS) protection

#### Device Management:

- Web-based manager
- Console (RS-232) configuration
- SNMP MIB I & MIB II

#### Firmware Upgrade:

- TFTP (Transparent FTP)
- Xmodem & 1K Xmodem

#### Lightning Protector Surge Current:

20KA

#### Power Supply (PoE):

- Input: 100~240V AC 50~60Hz
- Output: -48V DC 0.7A

#### FCC Operating Range:

- Up to 3.48miles (5.6Km)

#### Operating Temperature:

- -20~70°C (-4~158°F) in operating
- -40~80°C (-40~176°F) in storage

#### Humidity (non-condensing)

- 5% to 95% typical
- All-weather enclosure

#### Dimensions

- L = 9.57 inches (243mm)
- W = 7.87 inches (200mm)
- H = 3.03 inches (77mm)

#### Package Total Weight

16.53Lb (7.5kg)

#### Package Contents:

- DWL-1750 Unit
- Ethernet Inline Power Injector
- 1m Low Loss RF Cable
- 30m MIL-C-5015 style Ethernet Cable
- 2m Uplink RJ-45 Ethernet Cable
- 2m MIL-C-5015 style RS232 Configuration Cable
- User's Manual CD
- Mast Mounting Bracket with U-bolts
- Wall Mounting Bracket with screws

#### Warranty

1 Year

Application

D-Link AirPremier™ Outdoor Products

Common Indoor 802.11b

1X

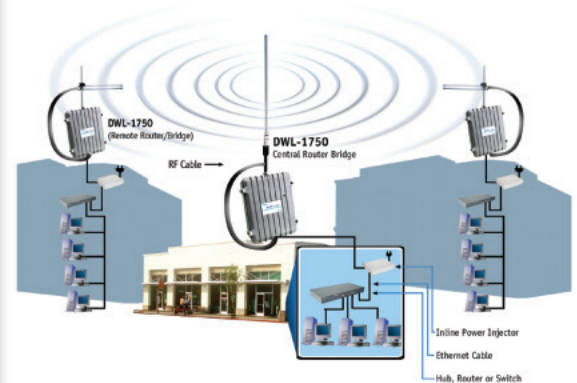
Up to 5X

### Outdoor Power

With an output power of 200mW and high gain antennas, the D-Link AirPremier Outdoor WLAN Products can transfer data with 4-5 times more power than the common 802.11b Access Points.

### Advanced Firewall Features

Built-in NAT firewall	✓
IP based Access Control	✓
Denial of Service (DoS) Protection	✓
MAC Filtering	✓
Scheduling	✓



D-Link Systems, Inc. 53 Discovery Drive Irvine CA 92618 www.dlink.com

© 2003 D-Link Systems, Inc. All rights reserved. D-Link® is a registered trademark of D-Link Systems, Inc. Other trademarks or registered trademarks are the property of their respective manufacturers or owners. Price and specifications are subject to changes without notice. See inside package for warranty details.

\*24/7 Tech Support is available only in USA.

**D-Link®**  
Building Networks for People