

## Quick Installation Guide

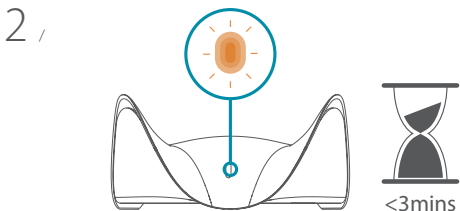
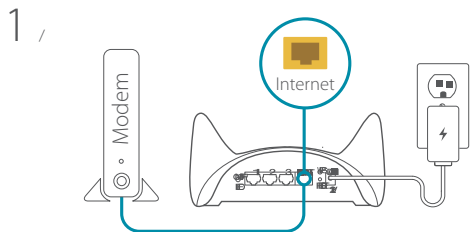
M95

BE9500 Wi-Fi 7 Smart Mesh Router

### What's in the Box



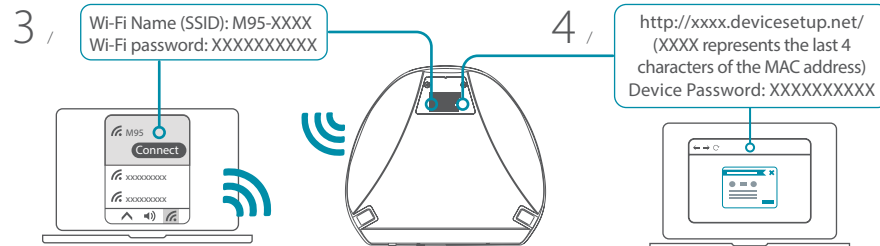
### Installation Instructions



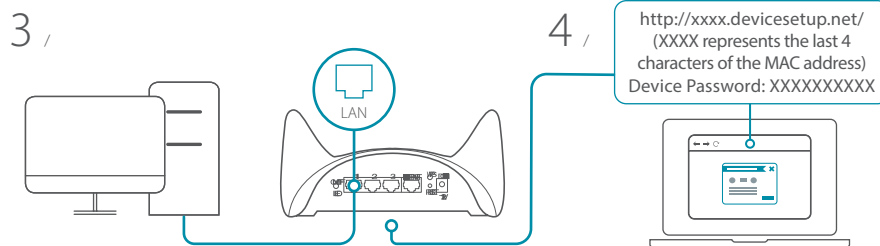
### Option 1



### Option 2



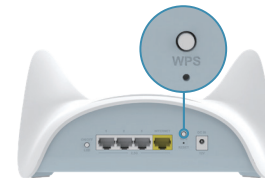
### Option 3



### Setting your M95 up as a Range Extender

To pair your devices with M95, follow the steps below.

- 1 / Plug in to power on M95 and place it near your wireless router. Wait for M95's LED indicator to start pulsing orange.
- 2 / Press the WPS button on the router for 3 seconds. Refer to your router's user manual for router behavior.
- 3 / Press the WPS button on your M95 for 3 seconds. The LED indicator should start pulsing white.



- 4 / When M95's LED indicator turns solid white (may take up to 3 minutes), this indicates M95 is connected to your wireless router.

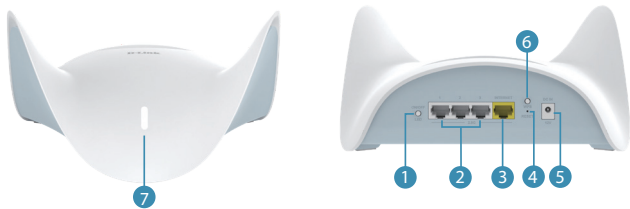
### You have now completed the setup !

You can move your M95 to any location you want for wireless coverage. By default, your M95 shares the same Wi-Fi Name and password of your wireless router.

### NOTE

WPS may be disabled on certain routers. If the LED indicator does not blink after pressing the WPS button, try again and press it a little longer. If that still does not work, use **AQUILA PRO AI App** for setup instead.

## M95 Overview



- 1 LED ON/OFF button
- 2 Ethernet port
- 3 Internet port
- 4 RESET button
- 5 Power connector : (12V/4A).
- 6 WPS button
- 7 LED status indicators

LED status indicators	Router mode	Extender mode	Bridge mode
○ Solid white	Connected to an Internet network with strong signal	Connected to a network with strong signal	Connected to an Internet network with strong signal
☀ Breathing white	Establishing a WPS connection	The uplink connection between your router and M95 is weak, or the M95 is establishing a WPS connection	Establishing a WPS connection
☀ Breathing orange	Ready for connection	Not connected	Not connected
☀ Interleaving white/orange	Undergoing firmware update process	Undergoing firmware update process	Undergoing firmware update process
☀ Breathing red	Resetting to factory default	Resetting to factory default	Resetting to factory default
● Solid red	Powering on	Powering on	Powering on

## FAQ

### Why can't I access the Internet?

Please reset your wireless router, and if it still does not work, please contact your internet service provider.

### What do I do if I forgot my router's login password?

Please reset your wireless router to default settings and set it up again.

### How do I restore the router to its factory default settings?

With the router powered on, press the reset button with a paperclip for 1 second and then release it. The M95 will now be at its factory default settings.

### How to build a mesh network with ethernet backhaul?

To create a wired Ethernet backhaul connection, simply connect an Ethernet cable from the LAN port on your Mesh Wi-Fi router to the LAN port on your Mesh Wi-Fi node. The Status LED will turn solid white once it has finished pairing with your Mesh Wi-Fi network in a few minutes.

## FCC Warning

This device complies with Part 15 of the FCC Rules. Operation is subject to the following two conditions:

(1) The device may not cause harmful interference, and (2) this device must accept any interference received, including interference that may cause undesired operation.

## GPL Code Statement



GPL Source Code Support  
<https://tsd.dlink.com.tw/GPL>

## Technical Support

Having trouble installing your new product? D-Link's website contains the latest user documentation and software updates for D-Link products. Customers can contact D-Link Technical Support through our website by choosing the relevant region.



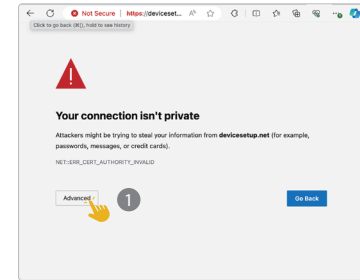
Contact Us  
[www.dlink.com/en/contact-us](http://www.dlink.com/en/contact-us)

United States  
Website: <http://support.dlink.com>

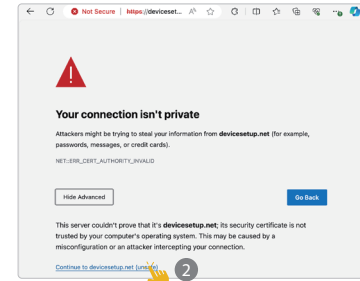
## Web Management Setup Notice

When you access the web management page of your D-Link device during installation, your browser may display a security warning stating, "Your connection isn't private." This is because the device's default management URL is not an actual Internet website with valid certificates and the security of the connection to the device is not compromised. You can proceed with the installation by following these steps:

1. Click the "Advanced" button.



2. Click "Continue to the default management URL."



Now you will be able to log in to your device.