

Quick Installation Guide

G416

AX1500 4G+ Smart Router



x1



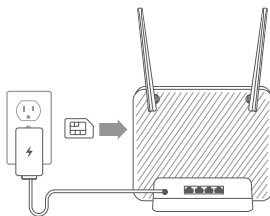
x1



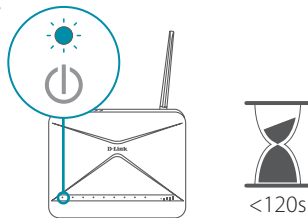
x1



1,

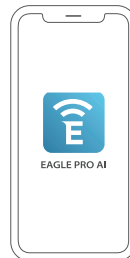


2,

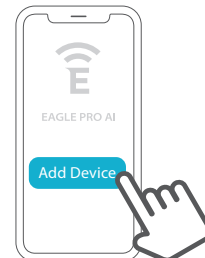


Option 1

3,



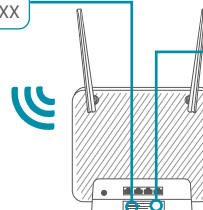
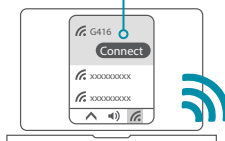
4,



Option 2

3,

Wi-Fi Name (SSID): G416-XXXX
Wi-Fi password: XXXXXXXXXX



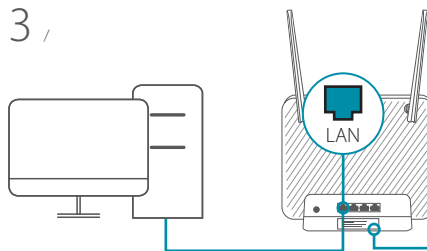
4,

<http://xxxx.devicesetup.net/>
(XXXX represents the last 4 characters of the MAC address)
Device Password: XXXXXX



Option 3

3,



4,

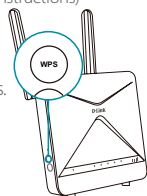
<http://xxxx.devicesetup.net/>
(XXXX represents the last 4 characters of the MAC address)
Device Password: XXXXXX



Quick Extender Setup

You can easily pair any router or extender with the G416 to extend your wireless coverage. For best compatibility and network performance, we highly recommend using an Eagle Pro AI AX1500 Series device such as the R15, M15, or E15.

- 1 / Plug the router or extender into a power source near the G416 and wait for the status LED to flash orange. (Refer to the QIG or user manual for detailed instructions)
- 2 / Press the WPS button on the G416 for 3 seconds. The Wi-Fi 2.4G/5G LED should start to flash green
- 3 / Press the WPS button on your router or extender for 3 seconds. (Refer to your router or extender manual for device behavior)
- 4 / When the Wi-Fi 2.4G/5G LED turns solid green (may take up to 3 minutes), this indicates that your wireless router or extender is connected to your G416.



Your setup is complete! You can now unplug and move your router or extender to a location between the G416 and the area where you want wireless coverage. By default, your router or extender will share the same Wi-Fi Name and Wi-Fi Password as the G416.

IMPORTANT

WPS may be disabled on some Routers or Modems. If the WPS Status LED on your Router or Modem does not start blinking when you have pressed the WPS button, try again and hold it a little longer. If it still does not blink, STOP, and configure your G415 using **EAGLE PRO AI App Setup**.

FAQ

Why can't I access the web-based configuration utility?

Verify that <http://XXXX.devicesetup.net/> has been correctly entered into the browser (XXXX represents the last 4 characters of the MAC address). The Wi-Fi Name(SSID), Wi-Fi Password, and device password are printed on the device label on the bottom of your device.

Why can't I access the Internet?

Power cycle your router and check your Internet access again. If you still can not connect to the Internet, contact your Internet service provider.

What do I do if I forgot my device password or my Wi-Fi Password?

If you forgot your password, you must reset your router. This process will change all your settings back to the factory defaults.

How do I restore the router to its factory default settings?

Locate the reset button. With the router powered on, use a paper clip to hold the button down until the LED turns solid red. Release the button and the router will go through its reboot process.

GPL Code Statement

This D-Link product includes software code developed by third parties, including software code subject to the GNU General Public License ("GPL") or GNU Lesser General Public License ("LGPL"). As applicable, the terms of the GPL and LGPL, and information on obtaining access to the GPL code and LGPL code used in this product, are available to view the full GPL Code Statement at:

<https://tsd.dlink.com.tw/GPL>

The GPL code and LGPL code used in this product is distributed WITHOUT ANY WARRANTY and is subject to the copyrights of one or more authors. For details, see the GPL code and the LGPL code for this product and the terms of the GPL and LGPL.

Written Offer for GPL and LGPL Source Code

Where such specific license terms entitle you to the source code of such software, D-Link will provide upon written request via email and/or traditional paper mail the applicable GPL and LGPL source code files via CD-ROM for a nominal cost to cover shipping and media charges as allowed under the GPL and LGPL.

Please direct all inquiries to:

Email:
GPLCODE@dlink.com

Snail Mail:
Attn: GPLSOURCE REQUEST
D-Link Systems, Inc.
14420 Myford Road, Suite 100
Irvine, CA 92606

FCC Warning

This device complies with Part 15 of the FCC Rules. Operation is subject to the following two conditions:

- (1) The device may not cause harmful interface, and
- (2) this device must accept any interface received, including interface that may cause undesired operation.

Technical Support

Having trouble installing your new product? D-Link's website contains the latest user documentation and software updates for D-Link products. Customers can contact D-Link Technical Support through our website by choosing the relevant region.



Contact Us
www.dlink.com/en/contact-us

United States
Website: <http://support.dlink.com>