

[Basic Manual Setup for DWR-957X- How to configure Print Server]

Step 1: Open your web browser and type **10.0.0.2** into the address bar, then press Enter.



If your device is connected to the router, it will take you to a blue D-Link page asking for a username and password. Default Username is admin, password is admin, unless it was updated.



Step 2: Once logged in, navigate to

Applications → Printer Share



Step 3: Here you will see the following, enable the Printer Service and enter you printer name in Queue Name. Click Apply to save the settings

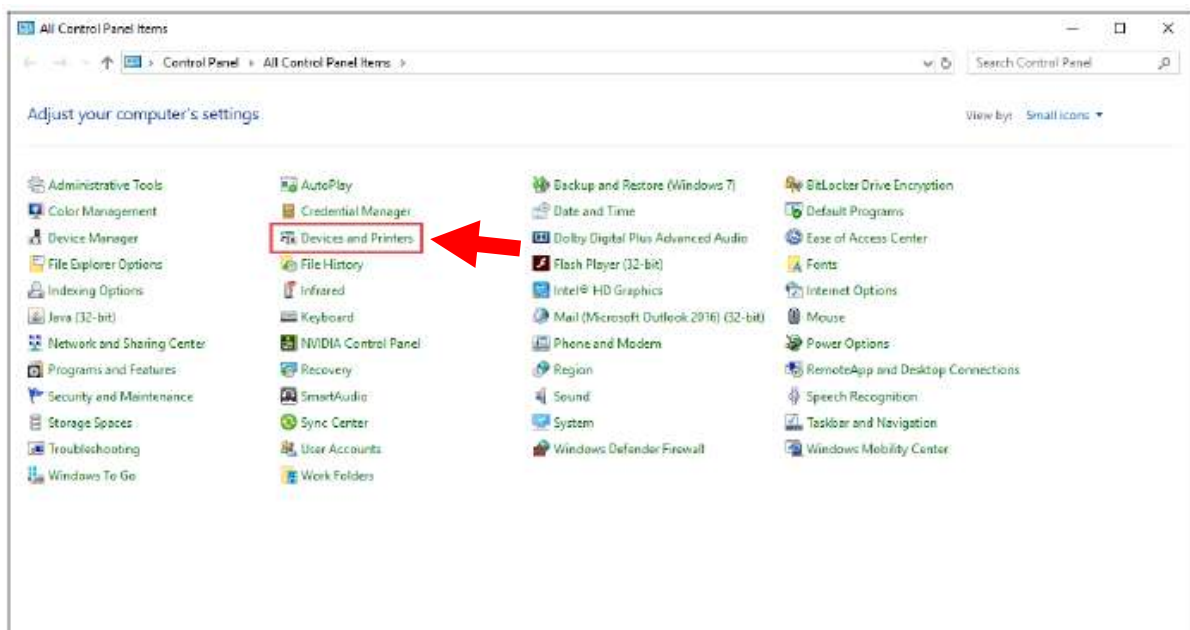
Printer Service Setup

Enable Printer Service: ☒

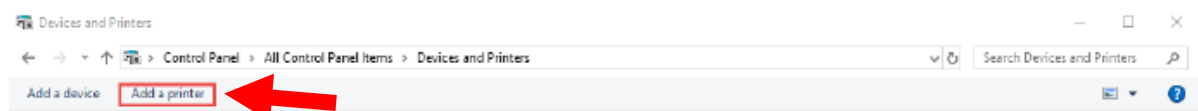
Device Minor Number:

Queue Name:

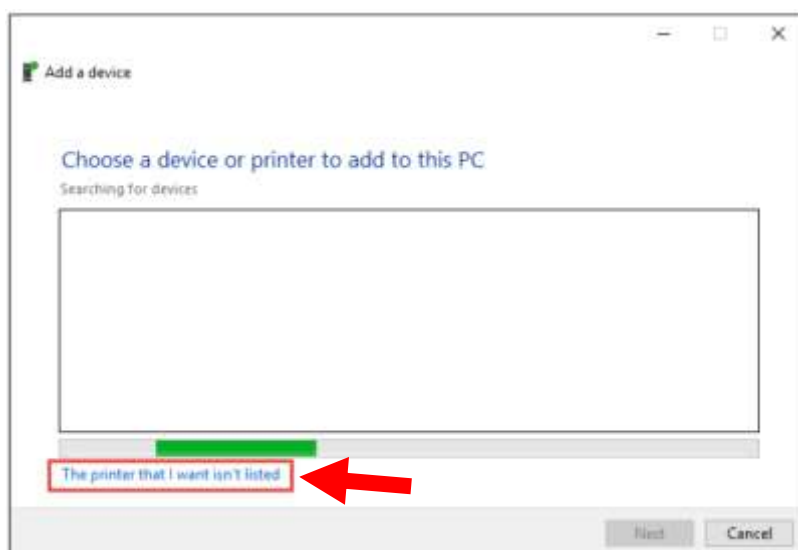
Step 4: On your windows pc go to control panel, then click on Devices and printers.



Step 5: Click on Add a printer from the toolbar



Step 6: Click on the link that says “The printer I want isn’t listed”



Step 7: Click on the “add printer using a TCP/IP address or hostname” and click on next.

← Add Printer

Find a printer by other options

☐ My printer is a little older. Help me find it.

☐ Select a shared printer by name

Browse...

Example: \\computename\printername or
http://computename/printers/printername/.printer

☒ Add a printer using a TCP/IP address or hostname

☐ Add a Bluetooth, wireless or network discoverable printer

☐ Add a local printer or network printer with manual settings

Next

Cancel

Step 8: Choose the settings as:

- A. Device Type: TCP/IP Device
- B. Hostname or IP address: 10.0.0.2 (Router Address)
- C. Port Name: 10.0.0.2 (same as router)
- D. Enable Query the printer....

Type a printer hostname or IP address

Device type:	TCP/IP Device
Hostname or IP address:	10.0.0.2
Port name:	10.0.0.2

☒ Query the printer and automatically select the driver to use

Next

Cancel

Step 9: Wait for the “Detecting TCP/IP port” to fail and configure settings as follow: a. Select Custom and click on settings:

← Add Printer

Additional port information required

The device is not found on the network. Be sure that:

1. The device is turned on.
2. The network is connected.
3. The device is properly configured.
4. The address on the previous page is correct.

If you think the address is not correct, click Back to return to the previous page. Then correct the address and perform another search on the network. If you are sure the address is correct, select the device type below.

Device Type

☐ Standard Generic Network Card

☒ Custom **Settings...**

Next Cancel

b. Choose LPR setting

c. Queue Name: Same as Queue Name in point 3.

d. Click OK.

Configure Standard TCP/IP Port Monitor

Port Settings

Port Name: 10.0.0.2

Printer Name or IP Address: 10.0.0.2

Protocol

☐ Raw **☒ LPR**

Raw Settings

Port Number: 9100

LPR Settings

Queue Name: Canon

☐ LPR Byte Counting Enabled

☐ SNMP Status Enabled

Community Name: public

SNMP Device Index: 1

OK Cancel

Step 10: Click on the next button to continue with the Installation

← Add Printer

Additional port information required

The device is not found on the network. Be sure that:

1. The device is turned on.
2. The network is connected.
3. The device is properly configured.
4. The address on the previous page is correct.

If you think the address is not correct, click Back to return to the previous page. Then correct the address and perform another search on the network. If you are sure the address is correct, select the device type below.

Device Type

☐ Standard Generic Network Card

☒ Custom Settings...

Step 11: Windows will start to look for the device again and detecting the driver and model of the printer. It will fail and you will have the option to choose the drivers from the Microsoft Windows update. a. Choose your Manufacture from the list and the driver for the printer and click on next.

← Add Printer

Install the printer driver



Choose your printer from the list. Click Windows Update to see more models.

To install the driver from an installation CD, click Have Disk.

Manufacturer	Printers
Adobe	Canon MF8500C Series V4 Version: 6.5.1.0 [2018/06/14]
Brother	Canon MF8500C Series V4 Version: 7.0.1.0 [2018/10/16]
Canon	Canon MG5400 series Printer Version: 2.60.2.40 [2012/07/10]
EPSON	Canon MG5400 series Printer Version: 2.60.2.40 [2012/06/25]

This driver is digitally signed.

[Tell me why driver signing is important](#)

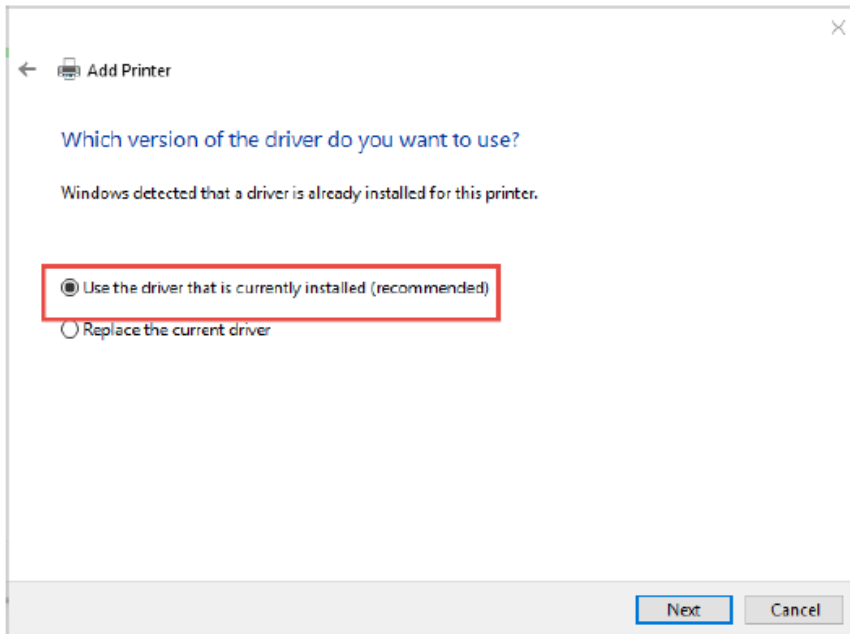
Windows Update

Have Disk...

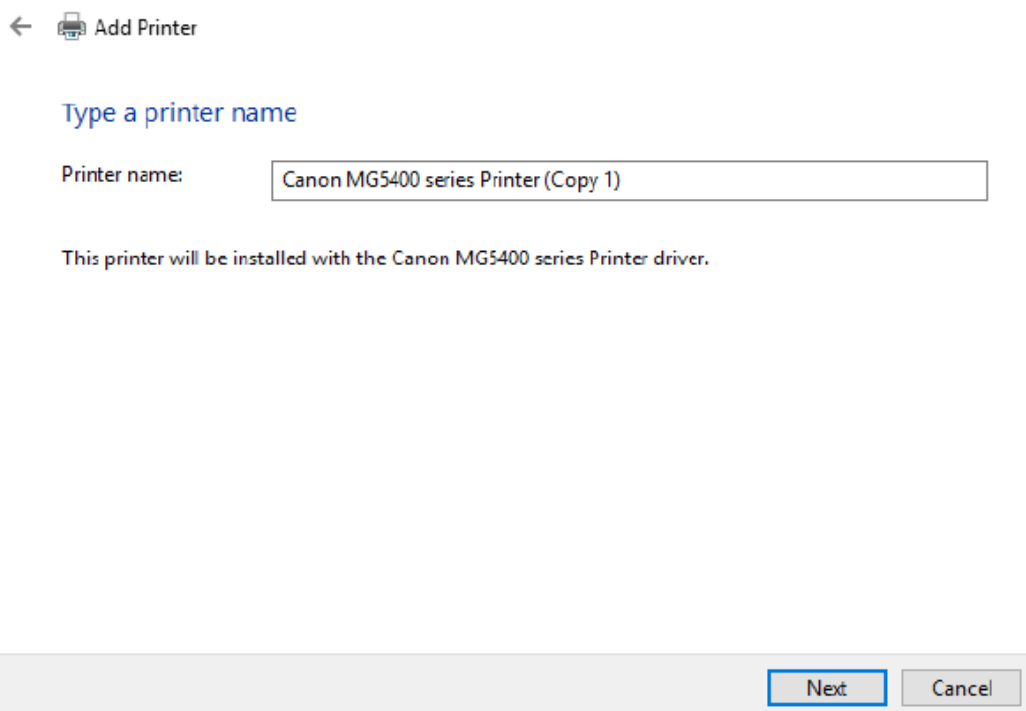
Next

Cancel


Step 12: The driver of the printer should have been installed previously if not then it has to be installed first. From the Window below Windows will ask to replace the installed driver or use the existing driver on the PC. Click on the next button to continue.



Step 13: Give your printer a name that it can be identified by on your computer and programs. Click on the next button to continue.



Step 14: After the driver is installed successfully, Windows will ask whether you want to share the printer with other computers or not.

←  Add Printer

Printer Sharing

If you want to share this printer, you must provide a share name. You can use the suggested name or type a new one. The share name will be visible to other network users.

☒ Do not share this printer


☐ Share this printer so that others on your network can find and use it

Share name:

Location:

Comment:

Step 15: The installation should be completed at this stage and you should be able to print a test page.

←  Add Printer

You've successfully added Canon MG5400 series Printer (Copy 1)

To check if your printer is working properly, or to see troubleshooting information for the printer, print a test page.