

[Basic Manual Setup for DWR-957X – Basic DHCP setup]

Open your web browser and type **10.0.0.2** into the address bar, then press Enter.



If your device is properly connected to the router, it will take you straight to the quick setup page

Quick Setup

step1 -> step2 -> step3 -> step4 -> step5 -> step6 -> step7 -> step8 -> step9

Please select which WAN interface to use: 3G/4G or Ethernet WAN,
then click the 'test' button to detect if the hardware interface is correctly connected.

Select Interface Type:

Cancel

Test

Step 1.1: On this step please make sure that your internet cable is plugged into the blue WAN port on the back of the router and then click on test. If the cable is properly plugged, you will get a message in green “Hardware interface connected properly.” Click on next to continue.

Quick Setup

step1 -> step2 -> step3 -> step4 -> step5 -> step6 -> step7 -> step8 -> step9

Please select which WAN interface to use:3G/4G or Ethernet WAN,
then click the 'test' button to detect if the hardware interface is correctly connected.

Select Interface Type:

Hardware interface connected properly,please click 'Next' to move to the next step

If this step fails, please make sure that there is a cable plugged into the blue port, and that cable is plugged into the ONT in LAN1.

Quick Setup

step1 -> step2 -> step3 -> step4 -> step5 -> step6 -> step7 -> step8 -> step9

Please select which WAN interface to use:3G/4G or Ethernet WAN,
then click the 'test' button to detect if the hardware interface is correctly connected.

Select Interface Type:

Eth connection incompleted.

Please check that the Eth line is connected correctly according to the Quick Installation Guide.

It might also be that synchronization is taking longer than usual.Allow a few minutes and then retry.

Step 1.2: After you click on apply, the router will now detect what type of connection you have.
Please wait patiently.

Quick Setup

step1 -> step2 -> step3 -> step4 -> step5 -> step6 -> step7 -> step8 -> step9

Auto detecting. This may take a while, please wait patiently...

Back

Reset

Step 2: After the router have successfully detected your account type, you should get a message in green telling you that “DHCP test passed” please select the DHCP and click on next.

Quick Setup

step1 -> step2 -> step3 -> step4 -> step5

Auto detect success, DHCP test passed! Suggest you choose DHCP. Please click 'Next'.

PPP account test fail! If you still want to test PPP account, Please click the Reset button to reset to factory defaults, and then restart this wizard after the reset.

Select Mode: DHCP ▼

Back

Reset

Next

If this step fails, please click on the reset button.

Quick Setup

step1 -> step2 -> step3 -> step4 -> step5 -> step6 -> step7 -> step8

Auto detect complete. Both DHCP and PPP account test fail! Please click the Reset button to reset to factory defaults, and then restart this wizard after the reset.

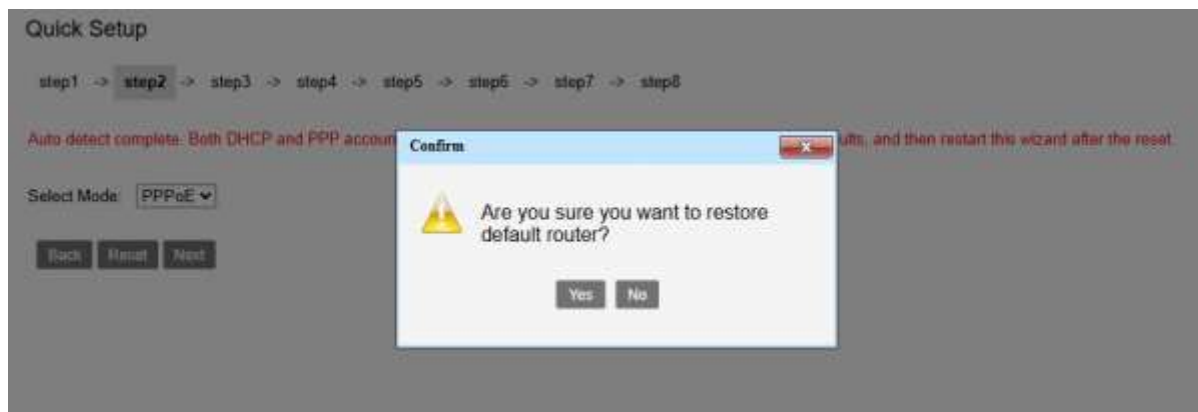
Select Mode: PPPoE ▼

Back

Reset

Next

A popup will appear asking if you are sure that you want to reset the router, click yes.



The router will now reset back to factory default settings, please wait for it to finish and try again.

If it fails again on this step, please contact your internet service provider.



Step 3: On this step you will have the option to change your **Wi-Fi name (SSID)** and the Wi-Fi password (**WPA Preshare key**), for both the 2.4Ghz and 5Ghz.

Quick Setup

step1 -> step2 -> **step3** -> step4 -> step5

SSID 2.4GHz:

2.4G WPA Preshare key:

SSID 5GHz:

5G WPA Preshare key:

Step 4: On this step you will have the option to change the router's login password, this will be used the next time you enter 10.0.0.2 into the web address bar as mentioned in step 1.

Quick Setup

step1 -> step2 -> step3 -> **step4** -> step5

Use the fields below to enter up to 15 characters and click "Apply" to change or create passwords.

Note: Password cannot contain a space.

AdminName:	<input type="text" value="admin"/>
AdminPassword:	<input type="password"/>
Confirm AdminPassword:	<input type="password"/>

[Back](#) [Next](#)

Step 5: On this step you will get a summary of all the changes made during the quick setup. Please take a screen shot of this for future reference and click on apply. The setup is now complete

Quick Setup

step1 -> step2 -> step3 -> step4 -> **step5**

Setup complete.

Click "Back" to review or modify settings.

Click "Apply" to apply the current settings.

If your Internet connection does not work after you pressed apply, you can try the Setup Wizard again with alternative settings or use Manual Setup instead if you have your Internet connection details as provided by your ISP.

Web Login Name:	admin
Web Login Password:	admin1
SSID 2.4GHz:	dlink-957X-2.4G-b5ca
2.4G WPA Preshare key:	ypvsp49337
SSID 5GHz:	dlink-957X-5.8G-b5ca
5G WPA Preshare key:	ypvsp49337

[Back](#) [Apply](#)

If the Wi-Fi name and password was changed on step 3, you will have to use the new details to connect.