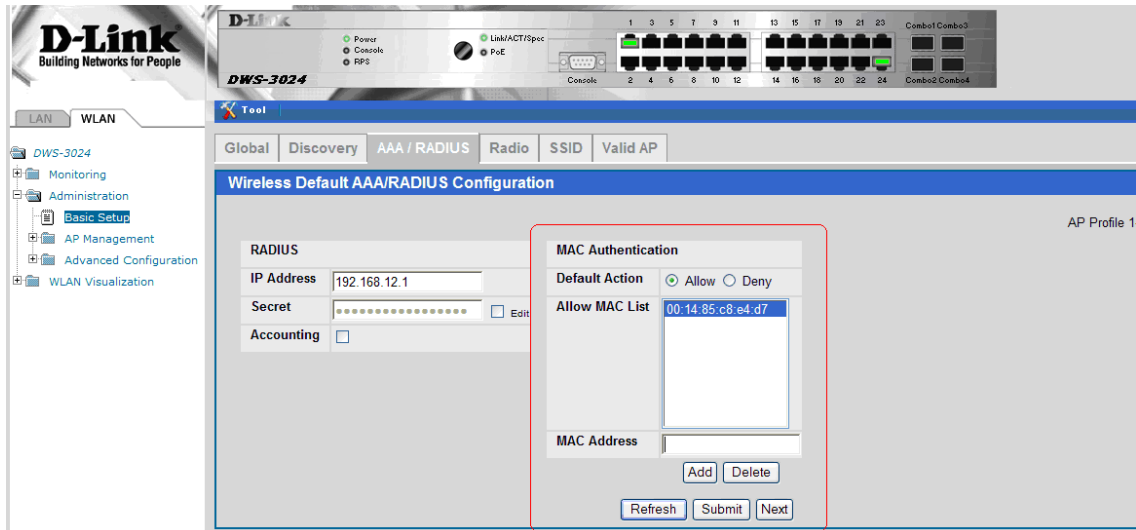
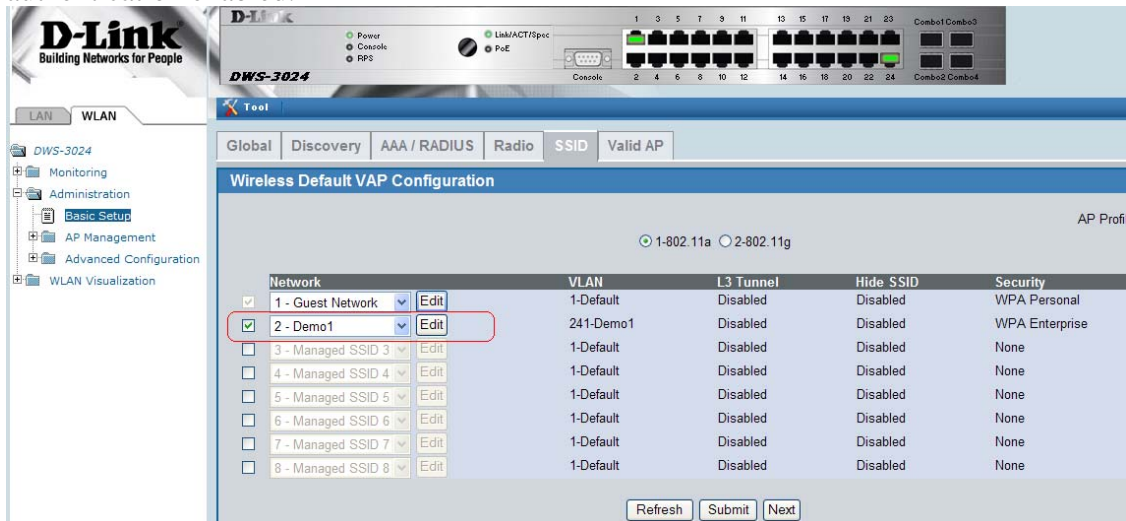


How to setup MAC Authentication on the switch?

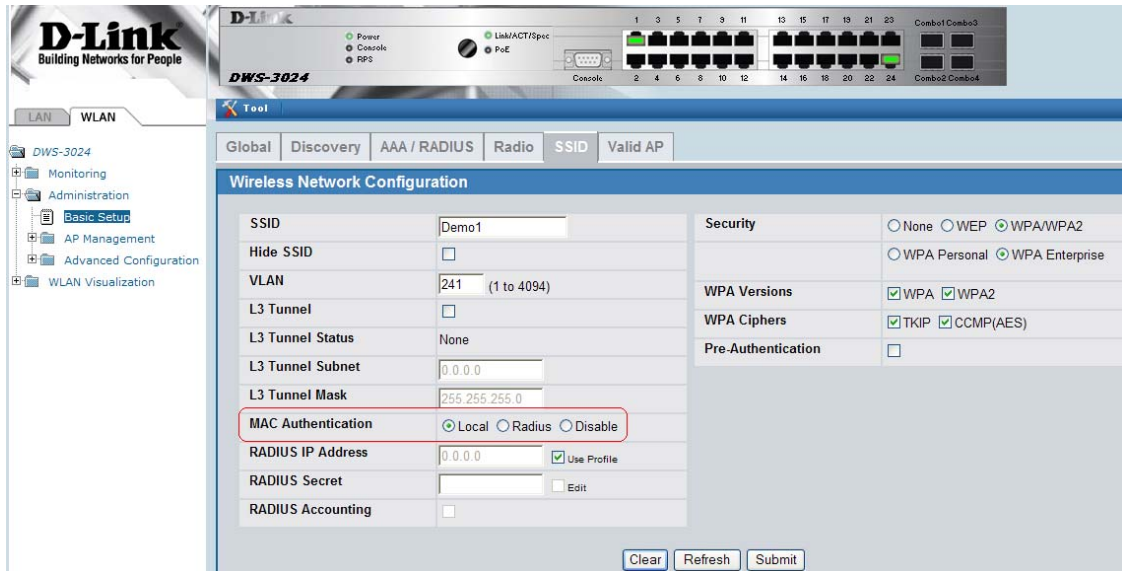
Go to WLAN tab->Administration->AAA/RADIUS tab->MAC Authentication.
Then, you can Add the MAC address of the clients on the field provided and select Default Action to Allow or Deny then click Submit as shown below.



Then, go to SSID tab and click on Edit button to the SSID you want to have MAC authentication enabled.



From the Edit menu as shown below, click on radio button for Local MAC Authentication then click Submit.



Then, go to Administration->AP Management->Reset and tick on the box provided for the AP's MAC address and click Reset button.

Note: If you have multiple access points, they all need to be reset for the settings to take effect.

