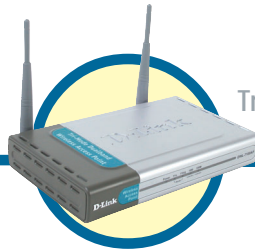


D-Link Quick Installation Guide

This product can be set up using any current Web browser, i.e., Internet Explorer 6 or Netscape Navigator 6.2.3 or later.



DWL-7100AP

D-Link *AirPremier™* AG
Tri-mode Dualband Wireless
Access Point

Before You Begin

The default IP address for the DWL-7100AP is **192.168.0.50** with a subnet mask of **255.255.255.0**. For the purpose of configuring the DWL-7100AP you will need to assign your computer a static IP address within the same range as the DWL-7100AP's IP address. **See the Manual on the CD-ROM if you need assistance in assigning a static IP address for your network adapter.**

Check Your Package Contents



DWL-7100AP Wireless Access Point



CD-ROM (containing Manual and Warranty)



Ethernet Cable



5V DC, 2.0A Power Adapter



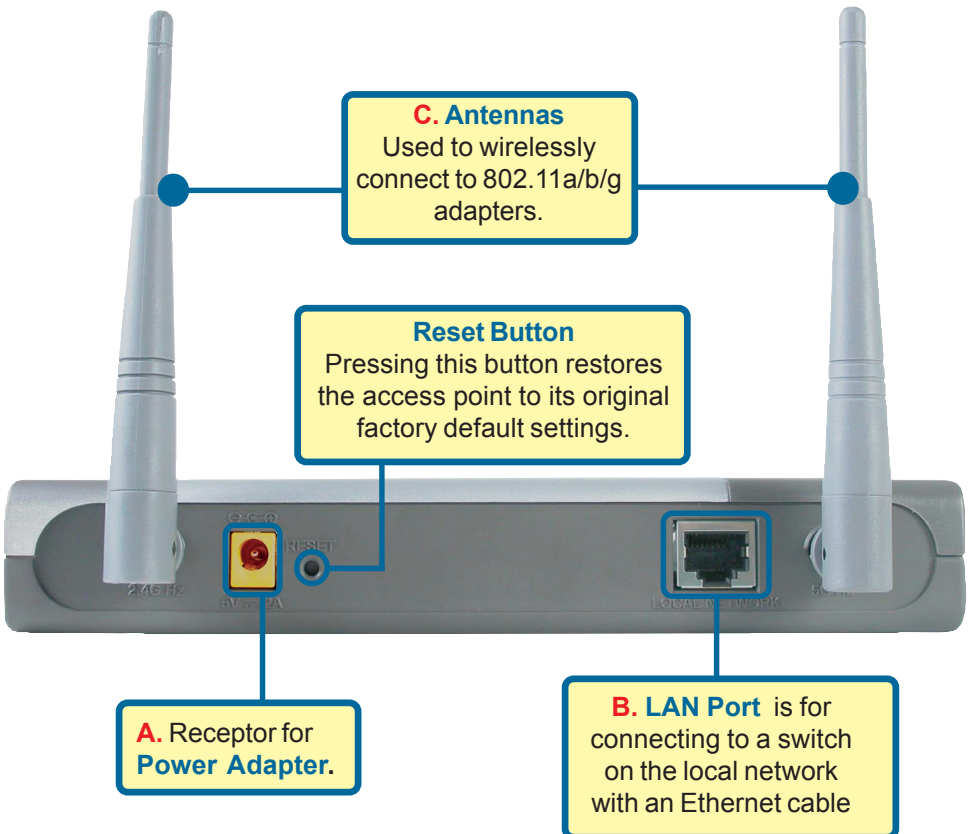
Using a power supply with a different voltage rating will damage and void the warranty of this product.

If any of the above items are missing, please contact your reseller.

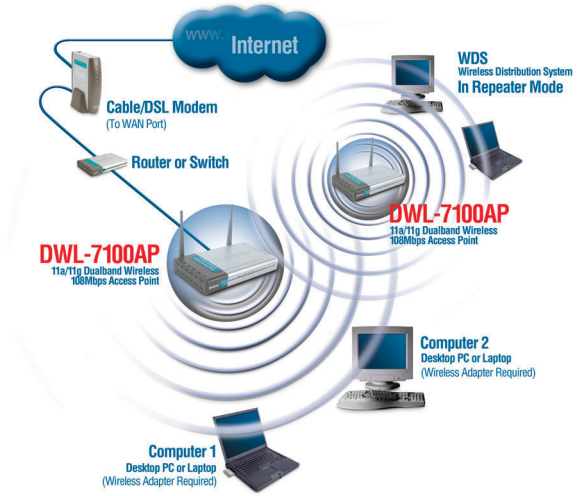
1

Connecting The DWL-7100AP To Your Network

- A. First, connect the power adapter to the **receptor** at the back panel of the DWL-7100AP and then plug the other end of the power adapter to a wall outlet or power strip. The Power LED will turn **ON** to indicate proper operation.
- B. Insert an Ethernet cable into the **LAN port** on the back panel of the DWL-7100AP and an available Ethernet port on the network adapter in the computer you will use to configure the DWL-7100AP. The **Link LED** for the LAN Port will illuminate to indicate a proper connection.
- C. Computers with 802.11a/b/g wireless adapters can connect to the DWL-7100AP. The DWL-AG650 *AirXpert™* Wireless Cardbus Adapter and the DWL-AG520 *AirXpert™* Wireless PCI Adapter will connect, out of the box, with the DWL-7100AP, using their default settings.



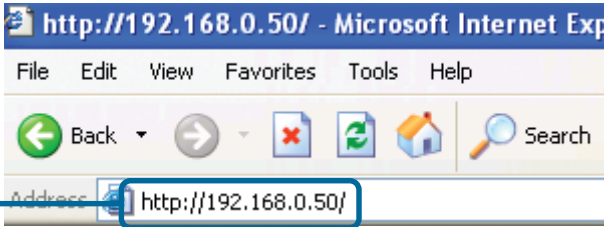
When you have completed the steps in this *Quick Installation Guide*, your connected network should look similar to this:



2

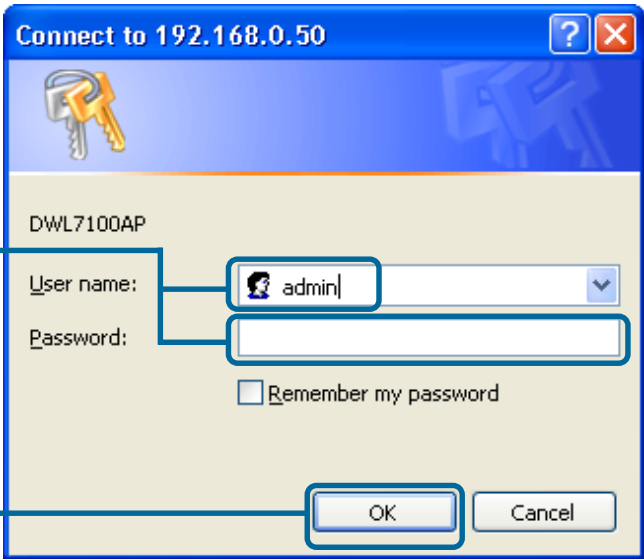
Using The Setup Wizard

Open your Web browser and type **“http://192.168.0.50”** into the URL address box. Then press the **Enter** or **Return** key.



The logon pop-up screen will appear.

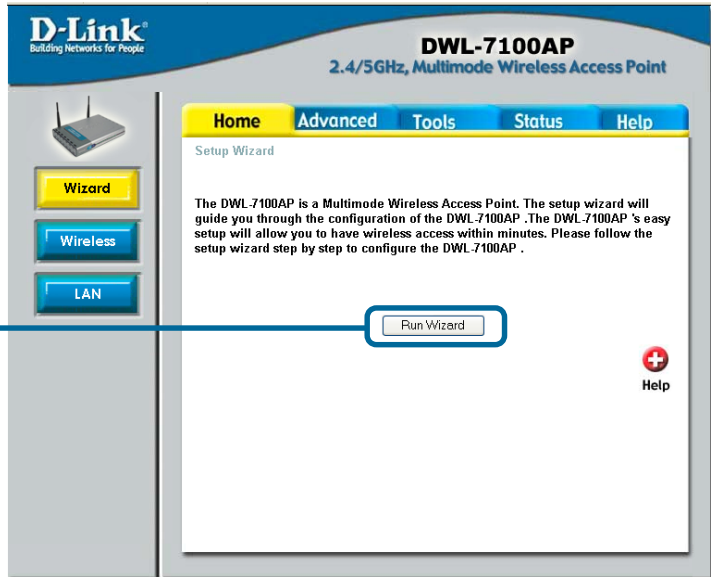
Type **“admin”** for the username and leave the password field blank.



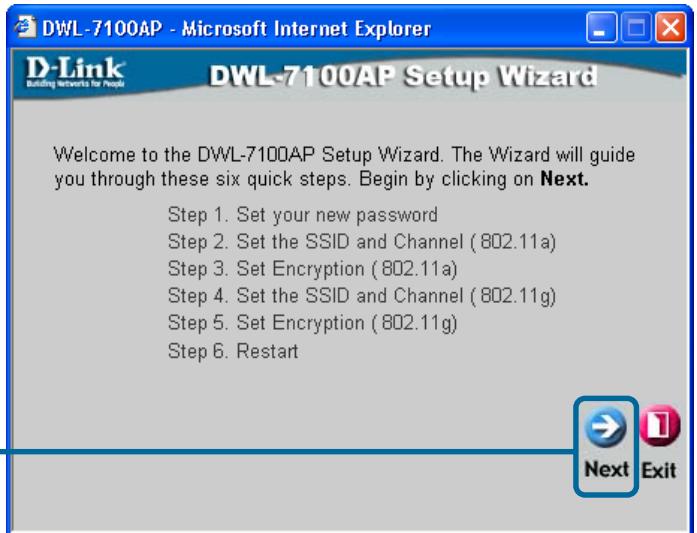
Click **OK**

2 Using The Setup Wizard (continued)

Once you have logged in, the **Home** screen will appear.



You will see the following screens.



Step 1 - Set up your new password. You have the option to establish a password.

Click **Next**

D-Link DWL-7100AP Setup Wizard
Set Password

You may change the password by entering in a new password. Click **Next** to continue.

Password

Verify Password

Back Next Exit

Step 2 - Wireless LAN 802.11a Setup

The default wireless settings are:
SSID = **default**
Channel = **52**
You can change these settings to match an existing wireless network.

Click **Next**

D-Link DWL-7100AP Setup Wizard
Set Wireless LAN 802.11a Connection

Enter in the SSID name and Channel number to be used for the Wireless LAN 802.11a Connection. Click **Next** to continue.

SSID: default

Channel: 52

Back Next Exit

Step 3 - WEP Encryption for 802.11a

The DWL-7100AP is capable of 64-, 128-, and 152-bit encryption. Select the key size you wish to use and enter the key in the field provided. By default, WEP is **Disabled**.

Click **Next**

D-Link DWL-7100AP Setup Wizard
WEP Encryption for 802.11a

If you wish to use encryption, enable it here and enter the encryption Key Values. Click **Next** to continue.

WEP: Disabled Enabled

Key Size: 64 128 152

Key1:

Back Next Exit

3

Your Setup is Complete!

Step 2 - Wireless LAN 802.11g Setup

The default wireless settings are:

SSID = default

Channel = 6

You can change these settings to match an existing wireless network.

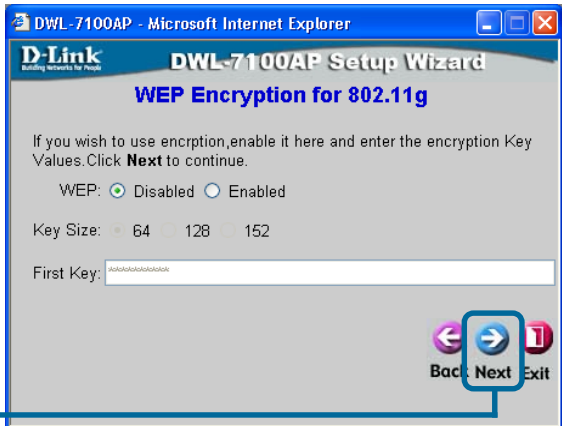
Click **Next**



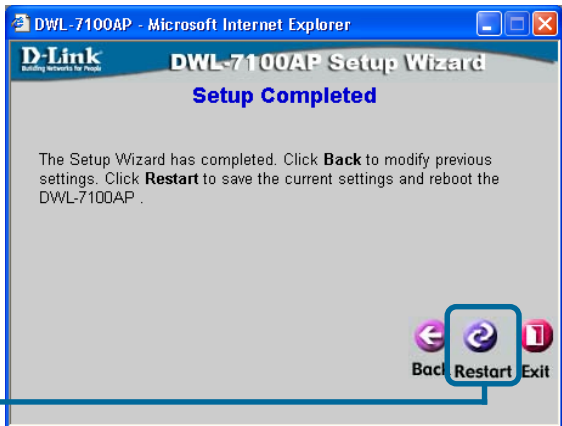
Step 3 - WEP Encryption for 802.11g

The DWL-7100AP is capable of 64-, 128-, and 152-bit encryption. Select the key size you wish to use and enter the key in the field provided. By default, WEP is **Disabled**.

Click **Next**

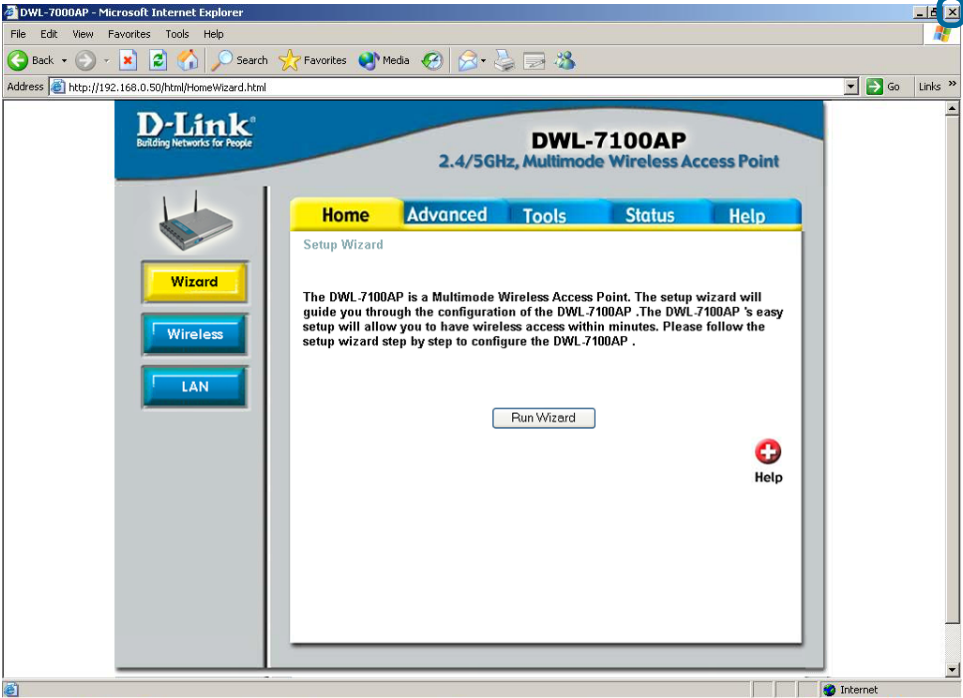


Click **Restart**




You will be returned to the **Home** tab.

Click to **Exit**



For additional settings or information, refer to the **Advanced**, **Tools**, or **Status** tabs on the web-management interface; or to the manual located on the CD-ROM.

 • For managing several DWL-7100APs, please utilize the D-Link *AirPremier™* AG Access Point Manager. For the latest version of the firmware or AP manager please go to <http://support.dlink.com>

Technical Support

You can find software updates and user documentation on the D-Link website.

D-Link provides free technical support for customers within the United States and within Canada for the duration of the warranty period on this product.

U.S. and Canadian customers can contact D-Link technical support through our website, or by phone.

Tech Support for customers within the United States:

D-Link Technical Support over the Telephone:

(877) 453-5465

24 hours a day, seven days a week.

D-Link Technical Support over the Internet:

<http://support.dlink.com>

[email:support@dlink.com](mailto:support@dlink.com)

Tech Support for customers within Canada:

D-Link Technical Support over the Telephone:

(800) 361-5265

Monday to Friday 8:30am to 9:00pm EST

D-Link Technical Support over the Internet:

<http://support.dlink.ca>

[email:support@dlink.ca](mailto:support@dlink.ca)

