

D-Link Quick Installation Guide

This product can be set up using any current web browser, i.e., Internet Explorer 6 or Netscape Navigator 6.2.3.



DWL-2100AP
D-Link AirPlus XtremeG™
802.11g/108Mbps
Wireless Access Point

Before You Begin

It's best to use a computer (with an Ethernet adapter) that is connected to a switch for configuring the DWL-2100AP. The default IP address for the DWL-2100AP is **192.168.0.50** with a Subnet Mask of **255.255.255.0**. You will need to assign your computer a Static IP address within the same range as the DWL-2100AP's IP address for the purpose of configuring the DWL-2100AP. **See the Appendix if you need assistance in assigning a Static IP address for your network adapter.**

Check Your Package Contents



DWL-2100AP 802.11g/108Mbps Wireless Access Point



CD-ROM (containing Manual and Warranty)



Ethernet (CAT5 UTP) Cable



5V 2.0A DC Power Adapter



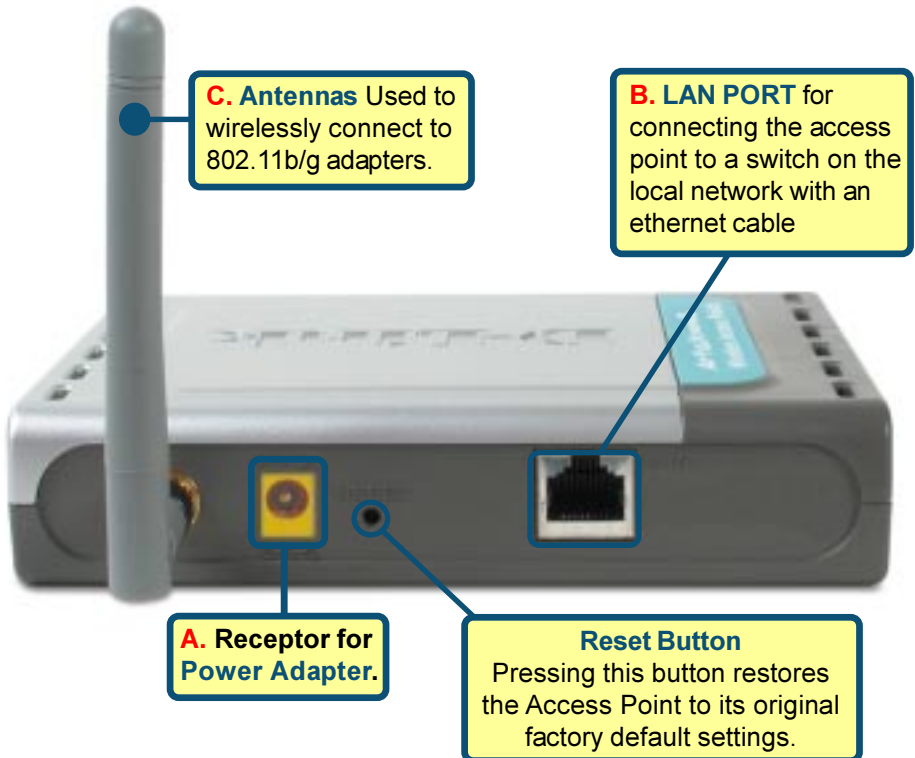
Using a power supply with a different voltage rating will damage and void the warranty of this product.

If any of the above items are missing, please contact your reseller.

1

Connecting the DWL-2100AP Wireless Access Point to Your Network

- A.** First, connect the power adapter to the **receptor** at the back panel of the DWL-2100AP and then plug the other end of the power adapter to a wall outlet or power strip. The Power LED will turn **ON** to indicate proper operation.
- B.** Insert one end of the cable to the **Ethernet port** on the back panel of the DWL-2100AP and the other end of the cable to an **Ethernet Broadband Router** (i.e., D-Link DI-604) or **Switch** (i.e., D-Link DSS-5+). **Note:** You also have the option of connecting the DWL-2100AP directly to the computer that will be used for configuration. The Link LED light will illuminate to indicate a proper Ethernet connection. (**Note:** The Ethernet Port on the DWL-2100AP is Auto-MDI/MDIX. Meaning you can use a straight-through or crossover-Ethernet cable to connect to the Ethernet port on the DWL-2100AP.)
- C.** The DWL-G650 AirPlus Xtreme G Wireless Cardbus Adapter and the DWL-G520 AirPlus Xtreme G Wireless PCI Adapter will connect, out of the box , with the DWL-2100AP, using their default wireless settings. Computers with 802.11b wireless adapters can also connect to the DWL-2100AP.

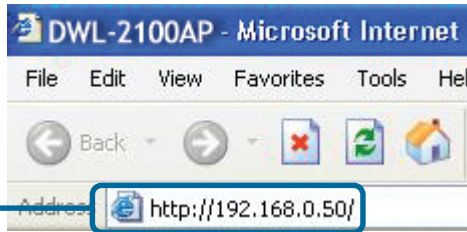


When you have completed the steps in this *Quick Installation Guide*, your connected network should look similar to this:



2 Using the Setup Wizard

Open your **Web browser** and type **“http://192.168.0.50”** into the URL address box. Then press the **Enter** or **Return** key.



The logon pop-up screen will appear.

Type **“admin”** for the username and leave the password field blank.

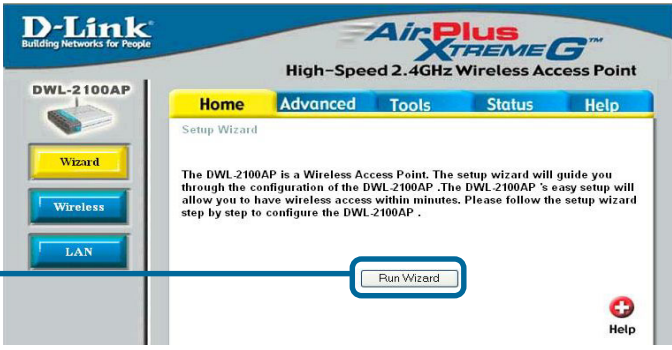


Click **OK**

2

Using The Setup Wizard (continued)

Once you have logged in, the **Home** screen will appear.



Click **Run Wizard**

You will see the following screens.



Click **Next**

2

Using The Setup Wizard (continued)

Step 1 - Set up your new password. You have the option to establish a password.

Click **Next**



Step 2 - Wireless Setup

The default wireless settings are:
SSID = **default**
Channel = **6**
You can change these settings to match an existing wireless network.

Click **Next**



2

Using The Setup Wizard (continued)

Step 3 - Encryption

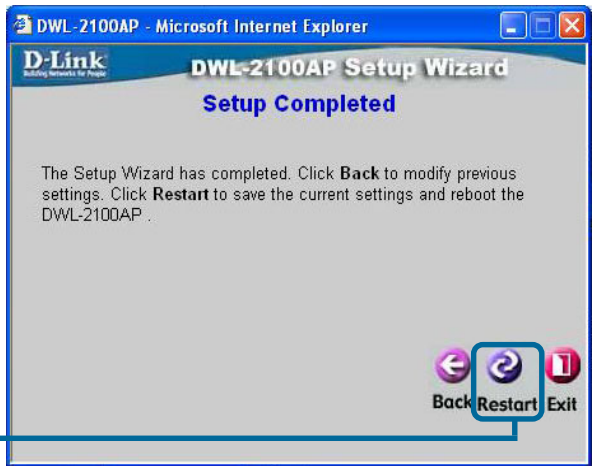
The DWL-2100AP is capable of two levels of wireless encryption 64-bit and 128-bit. **By default the encryption is disabled.** You can change the encryption settings for more secure wireless communication.

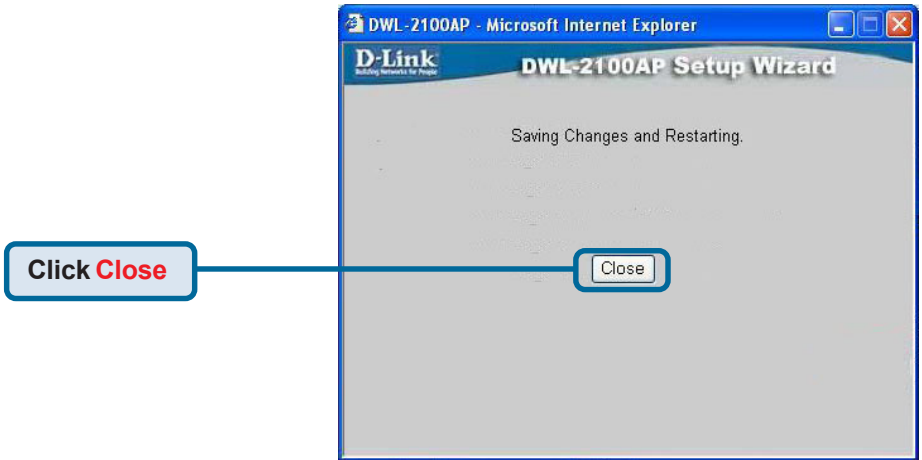
Click **Next**



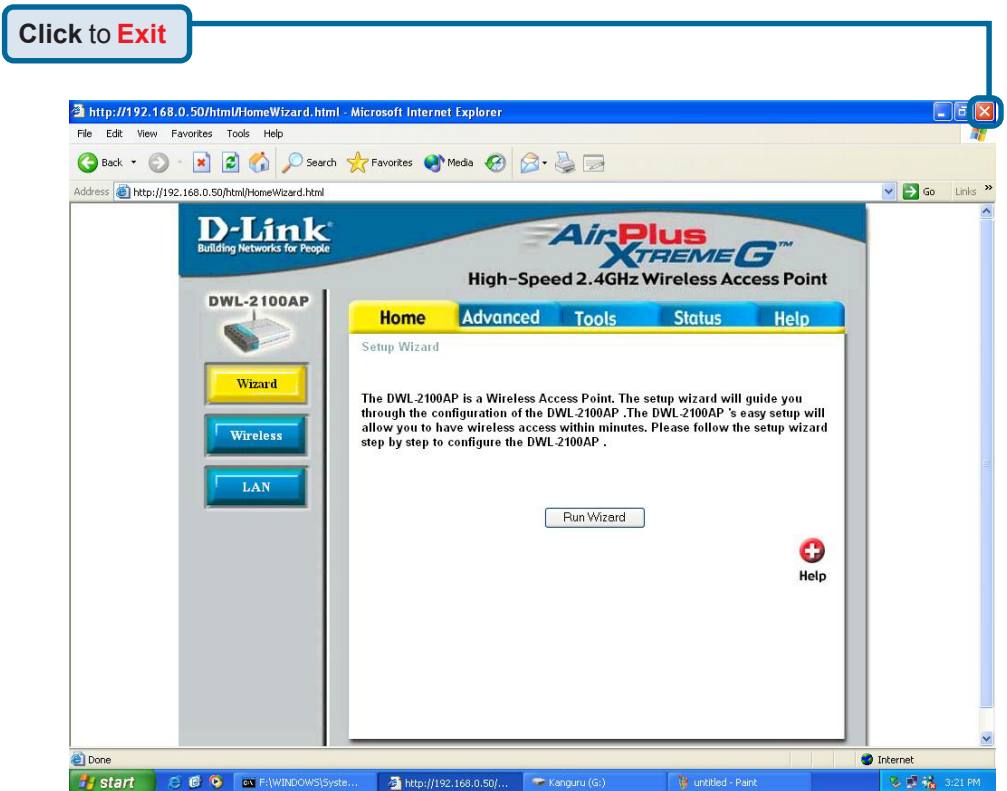
Your Setup is Complete!

Click **Restart**





You will be returned to the **Home** tab.



For additional settings or information, refer to the **Advanced**, **Tools**, or **Status** tabs on the web-management interface; or to the manual located on the CD-ROM.

Appendix

Assigning a Static IP Address in Windows

To assign a Static IP Address to the laptop or computer that you are using to configure the DWL-2100AP, please do the following:

Go to **Start** > Double-click on **Control Panel** > Double-click on **Network Connections** > Right-click on **Local Area Connections** > Click **Properties**

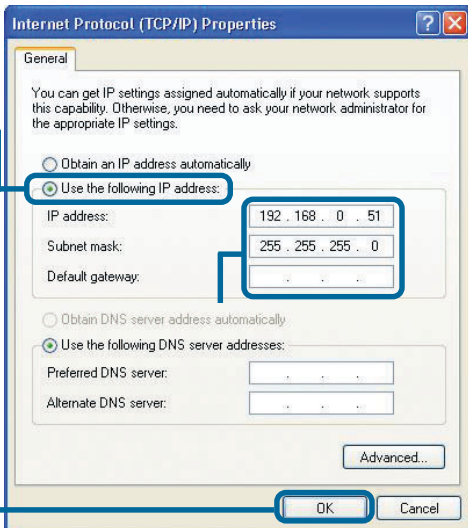
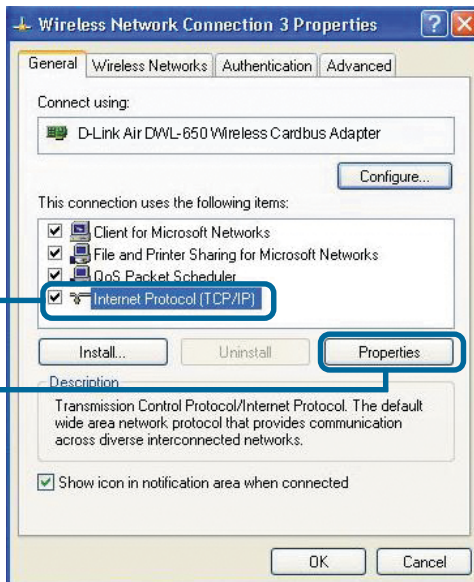
Highlight **Internet Protocol (TCP/IP)**

Click **Properties**

Select **Use the following IP address** in the Internet Protocol (TCP/IP) Properties window

Input your IP address and subnet mask. (The IP Address must be within the same range as the DWL-2100AP. The IP Address of the DWL-2100AP is **192.168.0.50**. You can assign 192.168.0.51 for your computer. **No two computers can have the same IP Address.** Assign a subnet mask of **255.255.255.0**.)

Click **OK**

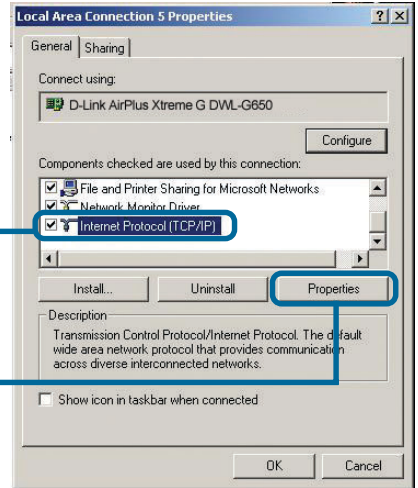


For Windows 2000 users:

Go to **Start > Settings > Network and Dial-up Connections** > Double-click on the **Local Area Connection** associated with the Network Adapter installed on your system > select **Properties**

Click **Internet Protocol (TCP/IP)**

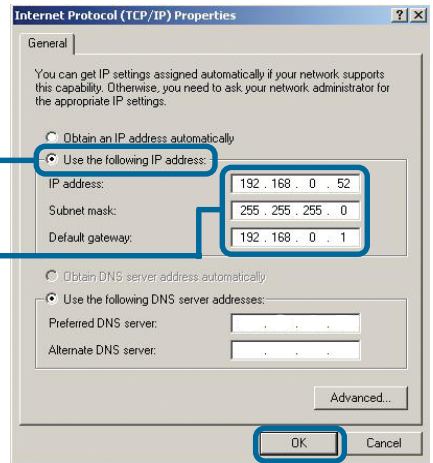
Click **Properties**



Select **Use the following IP address**

Input your IP address and subnet mask. (The IP Address must be within the same range as the DWL-2100AP. The IP Address of the DWL-2100AP is **192.168.0.50**. You can assign 192.168.0.52 for your computer. **No two computers can have the same IP Address.** Assign a subnet mask of **255.255.255.0**.)

Click **OK**



For Windows Me and 98se users:

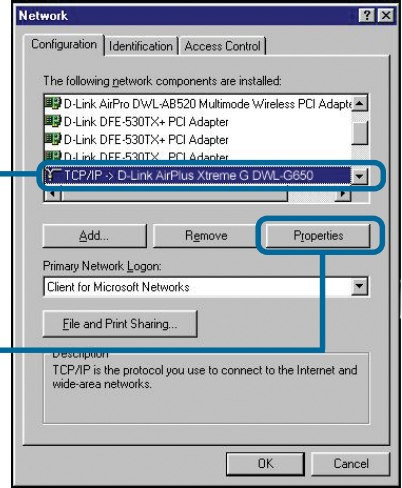
Click **Internet Protocol (TCP/IP)**

Go to **Start > Settings > Control Panel >**

Double-click on the **Local Area Connection** associated with the Network Adapter installed on your system > select **Properties**

Click **Internet Protocol (TCP/IP)**

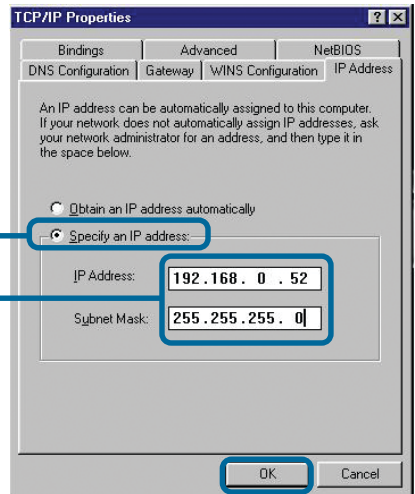
Click **Properties**



Select **Specify IP Address**

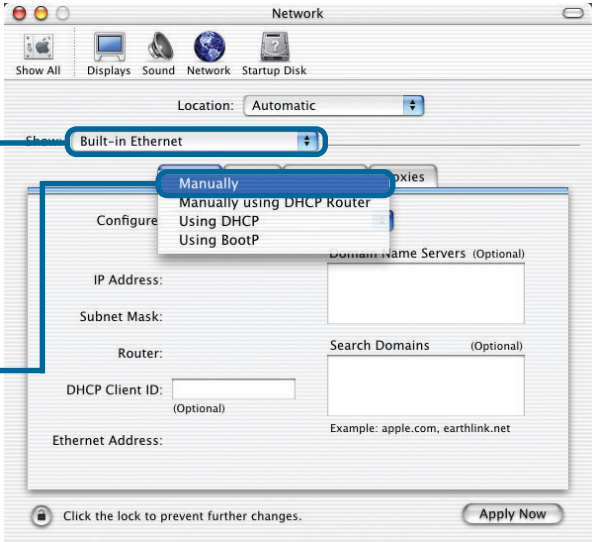
Input your IP address and subnet mask. (The IP Address must be within the same range as the DWL-2100AP. The IP Address of the DWL-2100AP is **192.168.0.50**. You can assign 192.168.0.52 for your computer. **No two computers can have the same IP Address.** Assign a subnet mask of **255.255.255.0**.)

Click **OK**



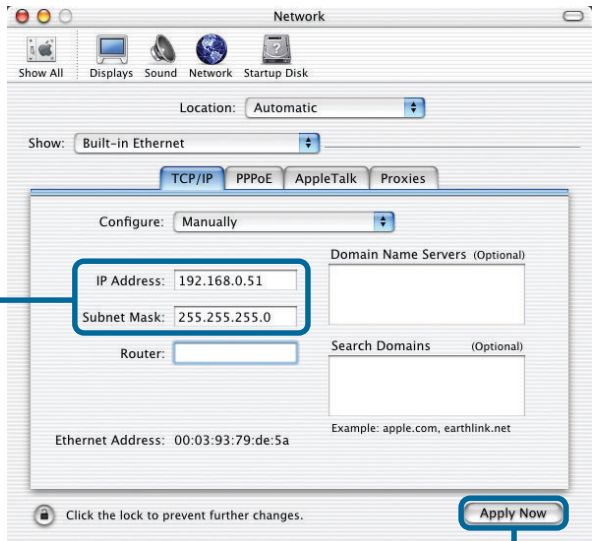
For Apple Macintosh OS X:

Go to the **Apple Menu** Click on **Network** and Select **System Preferences**



Select **Built in Ethernet** in the Show pull-down menu

Select **Manually** in the Configuration pull-down menu



Input your **IP address and subnet mask**. (The IP Address must be within the same range as the DWL-2100AP. The IP Address of the DWL-2100AP is **192.168.0.50**. You can assign 192.168.0.51 for your Macintosh. **No two computers can have the same IP Address**. Assign a subnet mask of **255.255.255.0**.)

Click on **Apply Now**

Technical Support

You can find software updates and user documentation on the D-Link website.

D-Link provides free technical support for customers within the United States and within Canada for the duration of the warranty period on this product.

U.S. and Canadian customers can contact D-Link technical support through our website, or by phone.

Tech Support for customers within the United States:

D-Link Technical Support over the Telephone:

(877) 453-5465

24 hours a day, seven days a week.

D-Link Technical Support over the Internet:

<http://support.dlink.com>

email:support@dlink.com

Tech Support for customers within Canada:

D-Link Technical Support over the Telephone:

(800) 361-5265

Monday to Friday 8:30am to 9:00pm EST

D-Link Technical Support over the Internet:

<http://support.dlink.ca>

email:support@dlink.ca

