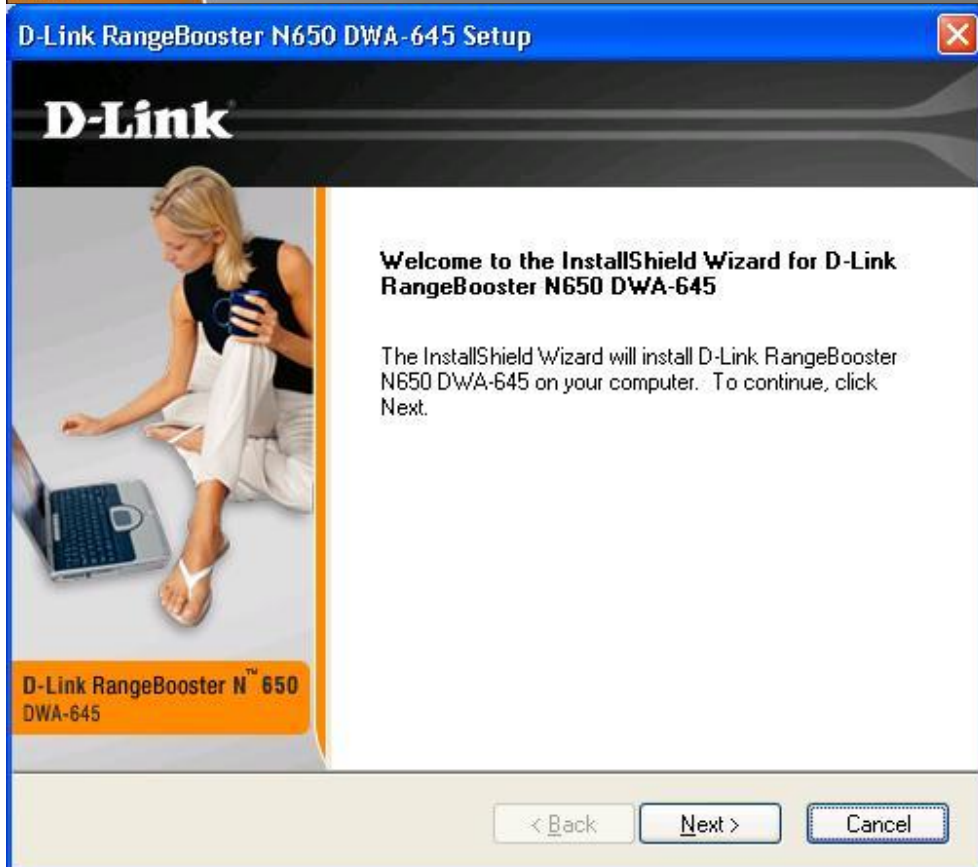
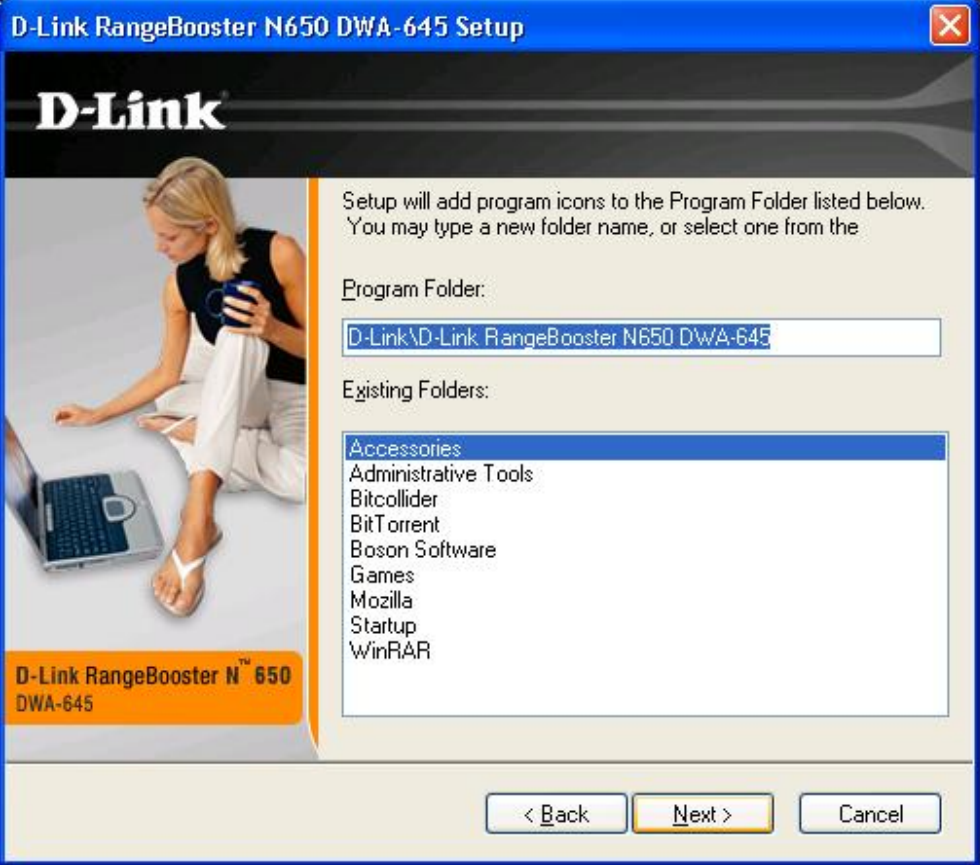
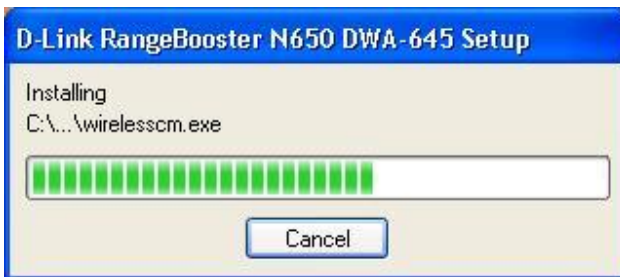


## DWA-645 Installation







## Hardware Installation



The software you are installing for this hardware:

D-Link RangeBooster N 650

has not passed Windows Logo testing to verify its compatibility with Windows XP. ([Tell me why this testing is important.](#))

**Continuing your installation of this software may impair or destabilize the correct operation of your system either immediately or in the future. Microsoft strongly recommends that you stop this installation now and contact the hardware vendor for software that has passed Windows Logo testing.**

## Wireless Connection Wizard

# D-Link



Would you like to use the Windows Zero Configuration Utility?  
If not, D-Link provides a utility for you to use as well.

Yes

No

D-Link RangeBooster N™ 650  
DWA-645



D-Link RangeBooster N™ 650  
DWA-645

### Get Connected!

Welcome to D-Link's Wireless Connection Wizard. In the next few steps you'll be asked to enter some information about your network. You can always re-run this wizard to easily connect to your network when it is ready!

If you do not know the name of your wireless network, you can scan for it by clicking the Scan button.



D-Link RangeBooster N™ 650  
DWA-645

### Get Connected!

Please choose your wireless network from the list below.

Wireless Network	Signal	Security	

## Wireless Connection Wizard

# D-Link



D-Link RangeBooster N™ 650  
DWA-645

### Finished!

You should now be connected to your wireless network. For your convenience we have inserted a Profile with this information into D-Link Wireless Manager. Roam effortlessly knowing that network access is a click away!

Exit

Back

Finish

## D-Link RangeBooster N650 DWA-645 Setup

# D-Link



D-Link RangeBooster N™ 650  
DWA-645

### InstallShield Wizard Complete

The InstallShield Wizard has successfully installed D-Link RangeBooster N650 DWA-645. Click Finish to exit the wizard.

< Back

Finish

Cancel

D-Link RangeBooster N650 DWA-645 Setup



**InstallShield Wizard Complete**

The InstallShield Wizard has successfully installed D-Link RangeBooster N650 DWA-645 Driver and Utility . You must restart your computer.

- Yes, I want to restart my computer now.
- No, I will restart my computer later.

Remove any disks from their drives, and then click Finish to complete setup.

D-Link RangeBooster N™ 650  
DWA-645

< Back    Finish    Cancel

D-Link RangeBooster N650 DWA-645

Disconnected



DWA-645    WIRELESS NETWORKS    MY WIRELESS NETWORKS    SUPPORT>>

SSID	MAC(BSSID)	Signal	Security	Channel
▲	00:11:95:DF:6D:E7	47%		1
▲ nace46	00:15:E9:28:EE:4E	35%		6
▲ 624	00:15:E9:1E:9F:A0	100%		6
▲ demoroom	00:0F:3D:28:D7:B7	85%		6
▲ DWL3200AP	00:17:9A:08:CA:39	100%		6
▲ DWL3200AP	00:17:9A:08:CA:45	100%		6

Refresh    Connect

My Wireless Networks  
dlink - dlink    Activate

**Connection** [X]

The network demoroom requires a network key(WPA-PSK/WPA2-PSK Key)

\*\*\*\*\*

Show Text in the password field

OK Cancel

**Connection** [X]

The network demoroom requires a network key(WPA-PSK/WPA2-PSK Key)

secret key

Show Text in the password field

OK Cancel

**D-Link RangeBooster N650 DWA-645** [X]

demoroom 192.168.12.4 CH6 39Mbps Connected

**D-Link**

DWA-645 WIRELESS NETWORKS MY WIRELESS NETWORKS SUPPORT>>

SSID	MAC(BSSID)	Signal	Security	Channel
demoroom	00:11:95:DF:6D:E7	42%	🔒	1
demoroom	00:0F:3D:28:D7:B7	81%	🔒	6
DWL3200AP	00:17:9A:08:CA:45	100%	🔒	6
624	00:15:E9:1E:9F:A0	100%	🔒	6
DWL3200AP	00:17:9A:08:CA:39	100%	🔒	6
demoroom	00:11:95:DF:6D:EF	24%	🔒	11

Refresh Connect

My Wireless Networks

demoroom - demoroom Activate



D-Link RangeBooster N650 DWA-645

Rangetest 10.1.1.166 CH11 270Mbps Connected

**D-Link**

DWA-645 WIRELESS NETWORKS MY WIRELESS NETWORKS SUPPORT>>

SSID	MAC(BSSID)	Signal	Security	Channel
Rangetest	00:15:E9:F6:5A:F0	29%		11
	00:11:95:DF:6D:EF	49%		11
624	00:15:E9:1E:9F:A0	67%		6
DWL3200AP	00:17:9A:08:CA:45	75%		6
DWL3200AP	00:17:9A:08:CA:39	76%		6
demoroom	00:0F:3D:28:D7:B7	83%		6

Refresh Connect

My Wireless Networks

Rangetest - Rangetest

D-Link RangeBooster N650 DWA-645

Rangetest 10.1.1.166 CH11 270Mbps Connected

**D-Link**

DWA-645 WIRELESS NETWORKS MY WIRELESS NETWORKS SUPPORT>>

My Wireless Network

Rangetest - Rangetest

New  
Modify  
Delete  
Activate

Profile Details

Network Name: Rangetest  
Network Type: Infrastructure  
Security: None

## Uninstallation

