



MirrorOp User Manual

MirrorStreamer TV Adapter for Miracast™ Wireless Display

Table of Contents

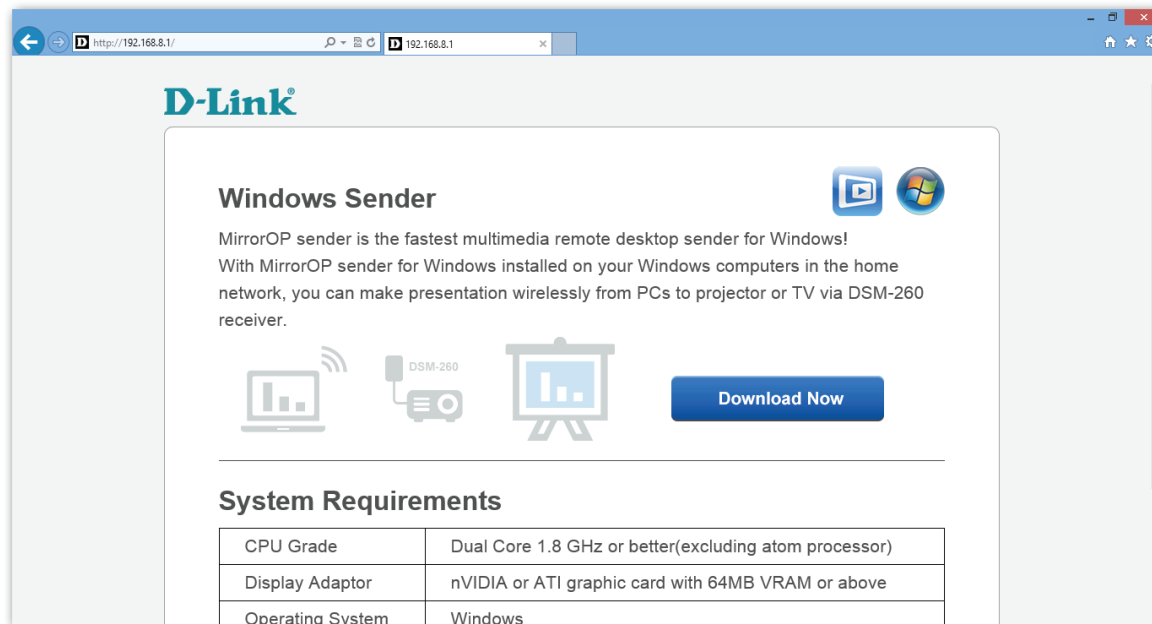
Download Sender from DSM-260	3
Download via Wi-Fi Hotspot mode	3
Download via WAN mode	4
Start Program for Windows system	6
Main User interface	7
Screen Projectio	7
Menu Description.....	8
Search Remote Box	9
Projection Quality.....	10
Screen Encoding Format.....	10
Remote Cursor Size	11
TV Offset Compensation	11
Auto Power Management.....	12
Auto WiFi Connect.....	12
Advanced Screen Capture	13
Check for updates.....	15
About	15
Exit.....	16

Download Sender from DSM-260

The MirrorOp sender for Windows is included with the DSM-260. Download it from the DSM-260 and then install it on your laptop.

Download via Wi-Fi Hotspot mode

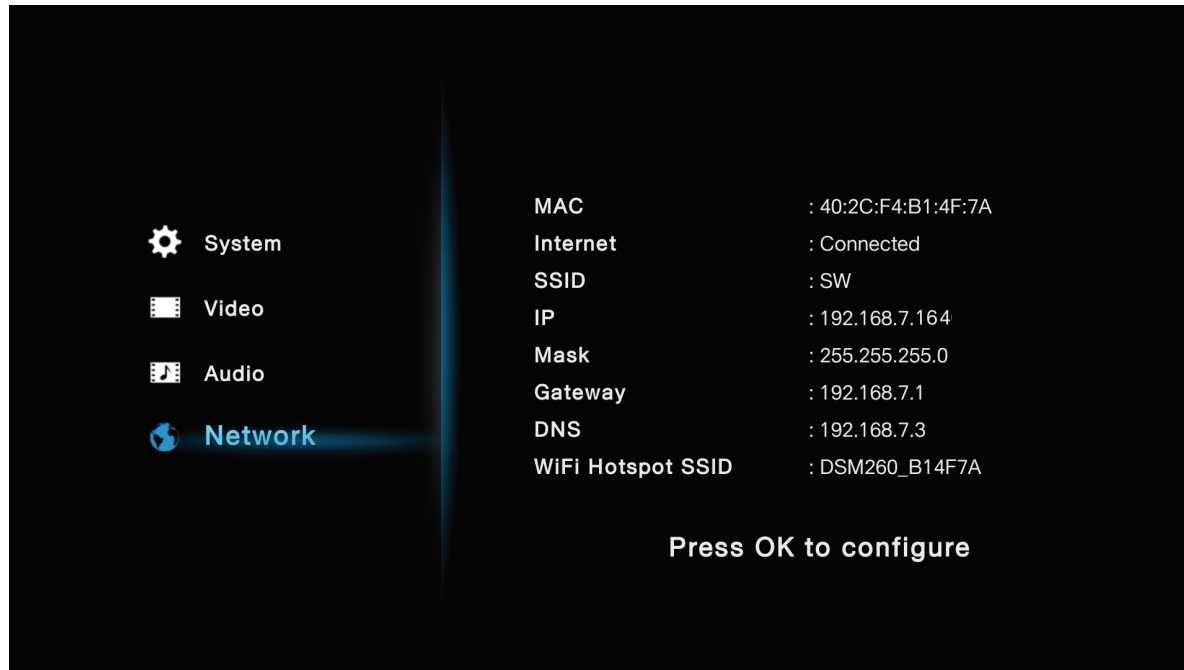
1) Link your laptop to the DSM-260 Hotspot SSID via Wi-Fi. Launch your browser and input the IP address: 192.168.8.1. in the address bar and press enter. The download page will appear.



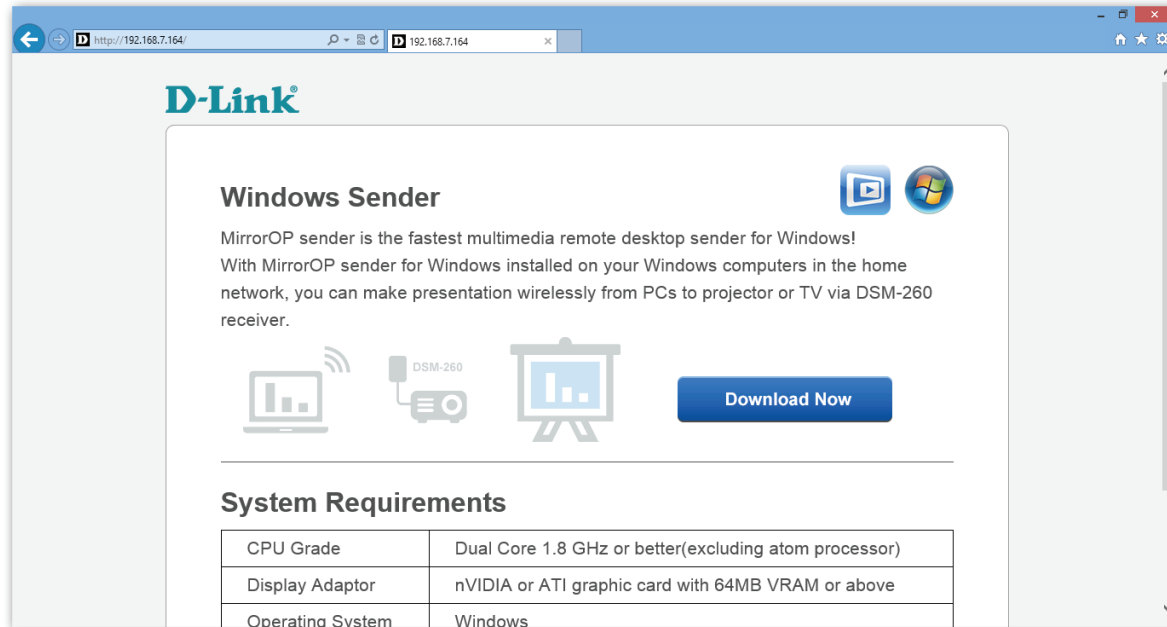
2) Download the sender application and install it on your laptop.

Download via WAN mode

- 1) Link the DSM-260 to the router via Wi-Fi and then link your laptop to the router via Wi-Fi.
- 2) Find the IP address as shown in the DSM-260 settings window.



3) Launch your browser and input the IP address in the address bar and press enter. The download page will appear.



4) Download the sender application and install it on your laptop

Start Program for Windows system

After installing the program, you will see the MirrorOp icon on your desktop :

- 1) Double click it to execute MirrorOp-Sender client

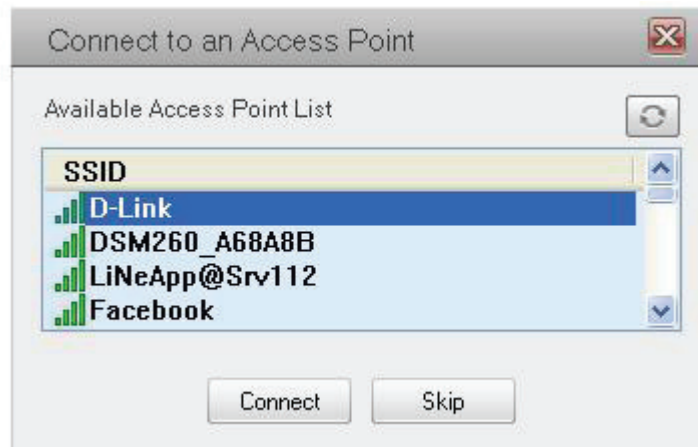


- 2) Program start to list all available Access Point List.(Auto WiFi connect enabled)
- 3) Program start to search all available MirrorOP devices.
- 4) After MirrorOP device is found, click it to start projection.

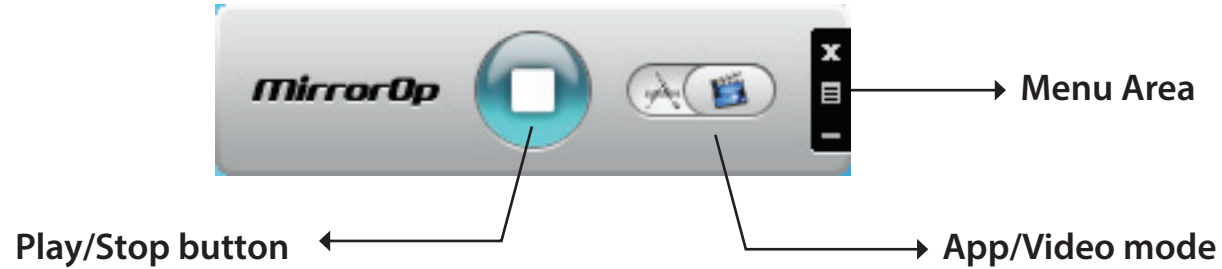
Search for device




While Auto WiFi connect is enabled, list all available access point list



Main User interface



Screen Projectio

Click the  button for full or split screen; you can project the main screen on to the display immediately.




Video Mode vs. App Mode

On **MirrorOp Sender** you can find a switch button for two modes:

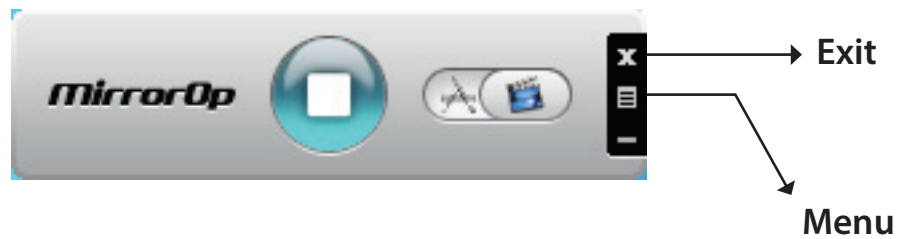
Video Mode and **App Mode**. **Video Mode** is designed for smooth video experiences, so by default it has longer latency between your PC and TV.

If you have very good network connection (by Ethernet) and prefer to use low latency mode at all times, you may drag the switch to **App Mode**.



button	Description
	Full Screen Projection
	Video Projection
	Application Projection

Menu Description

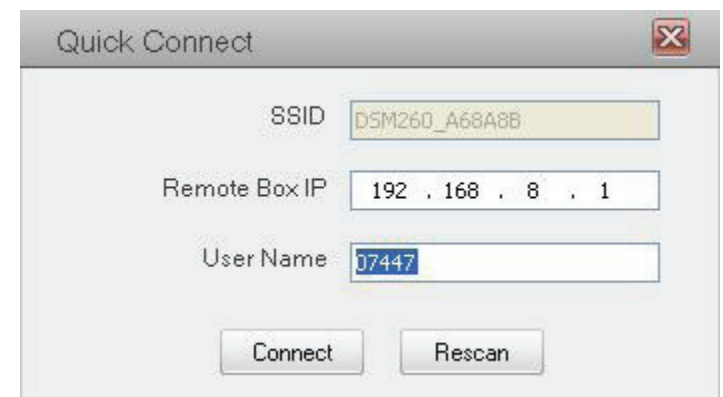


Search Remote Box

Click <Search Remote Box> to connect to another MirrorOp.

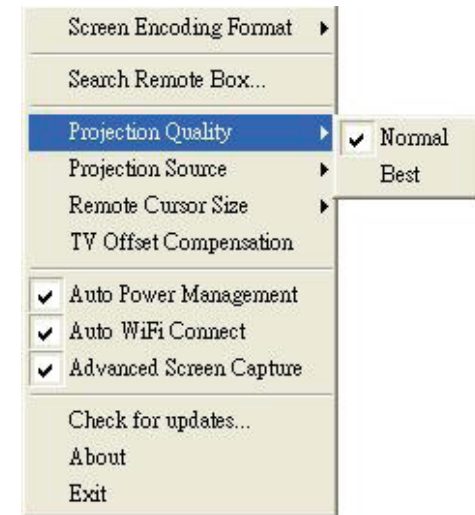


The last **MirrorOp** you connected is remembered. To connect to another one, Click <Rescan>.



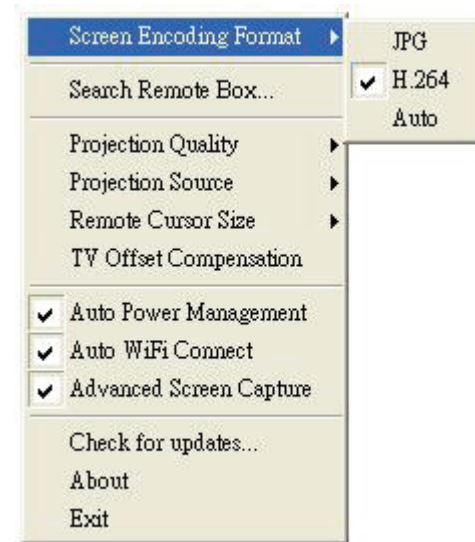
Projection Quality

Adjust projection image quality in <Projection Quality>. Higher quality requires higher bandwidth. Default is Normal.



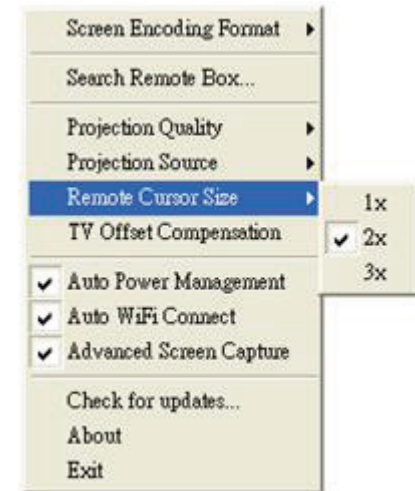
Screen Encoding Format

Change the encoding format when you may play the video or make presentation. It is recommended to play the video using H.264 format and present the document using JPG.



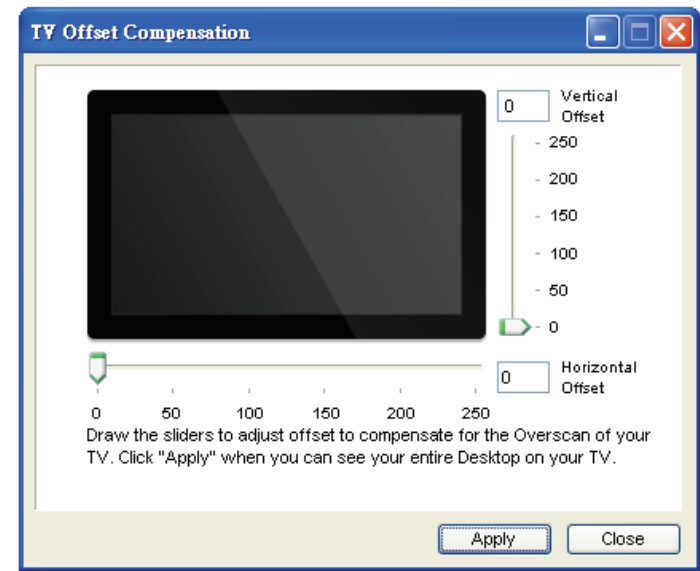
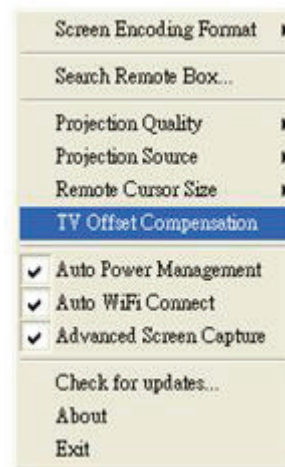
Remote Cursor Size

Adjust the cursor size on projection screen. When you select 3X option that will adjust the cursor to big size. The default is 2X.



TV Offset Compensation

Most TVs has overscan design which will cut the edges of the Desktop. If you cannot turn off overscan from your TV OSD, please use the <TV Offset Compensation> to shrink projected screen to fit your TV.



Drag the sliders to set offset value. Click <Apply> to update TV projection. Check the TV screen. When the Desktop fits the TV, click <Close>.

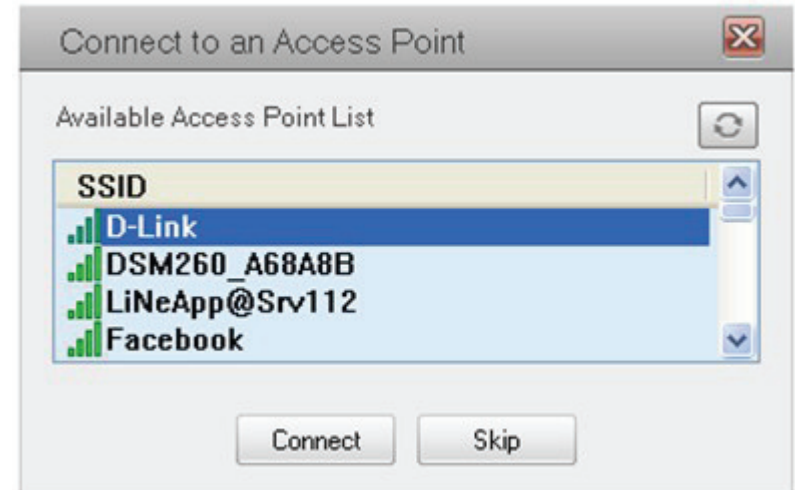
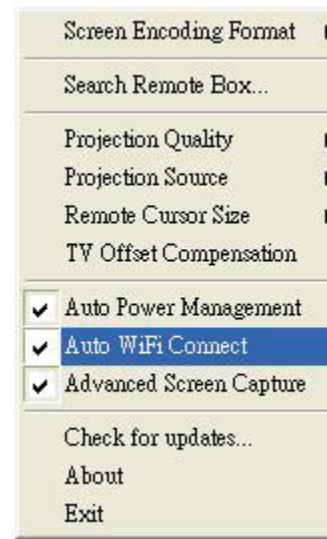
Auto Power Management

<**Auto Power Management**>To make the highest projection performance, application will turn the PC's windows power scheme from current settings to "highest performance", however, you can click the "Auto Power Manage" to enable or disable this function and restore you power scheme immediately.



Auto WiFi Connect

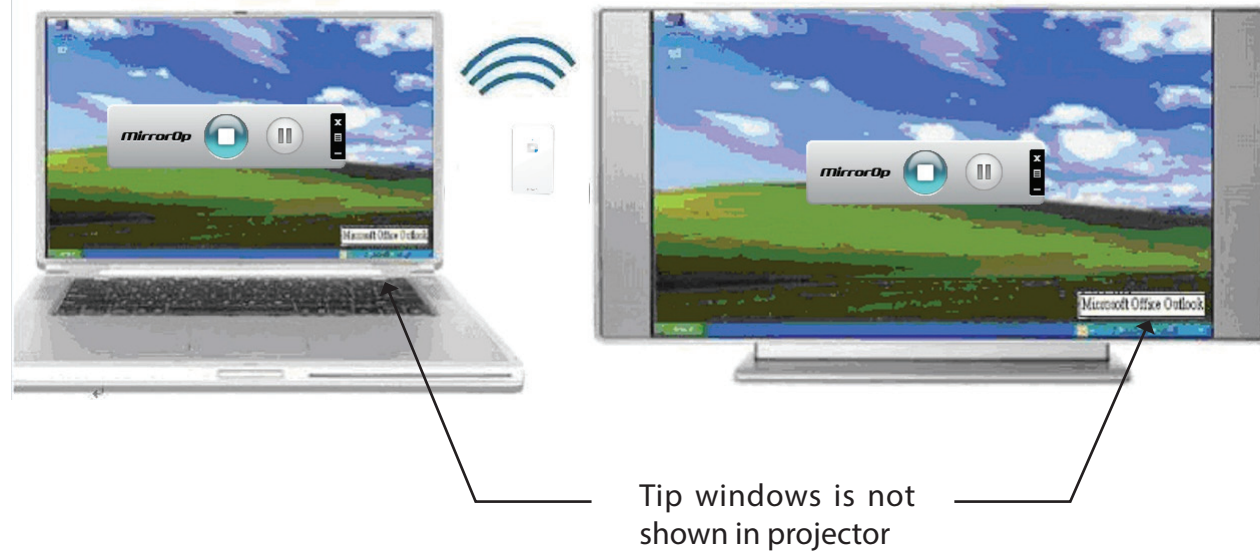
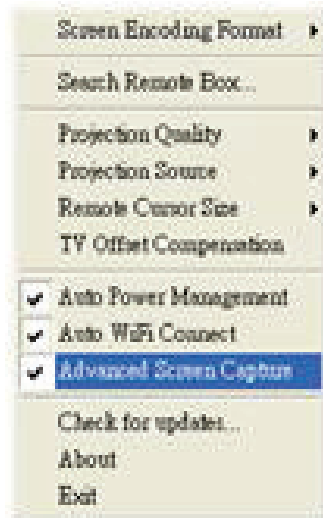
Check <**Auto WiFi Connection**> to let **MirrorOp** search and connect to access points, or turn it off to use your original WiFi manager to connect to access points manually.



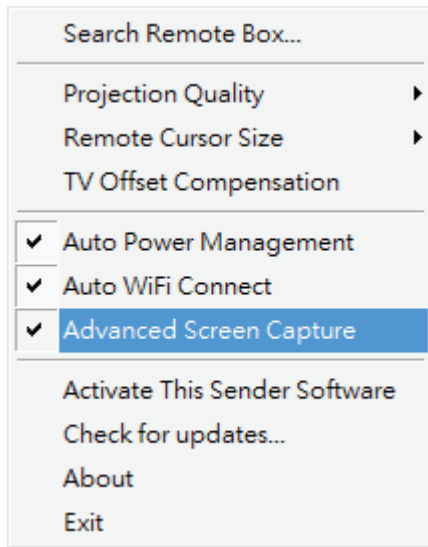
Advanced Screen Capture

Click the <Advanced Screen Capture>, you will be able to see tip windows and other layered windows (include the main UI) on the connected display. However, the mouse cursor may blink from time to time when you are projecting your PC screen!

Disable “Advanced Screen Capture”.



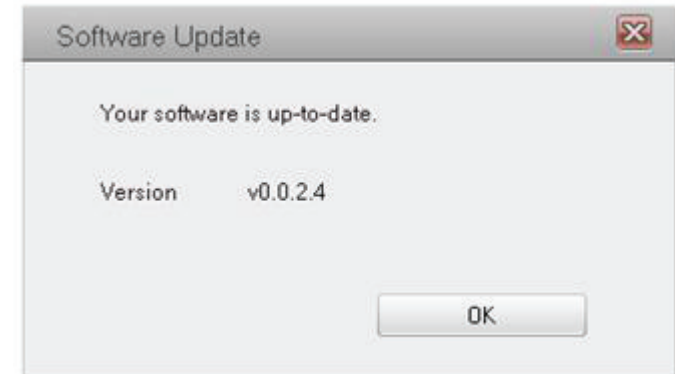
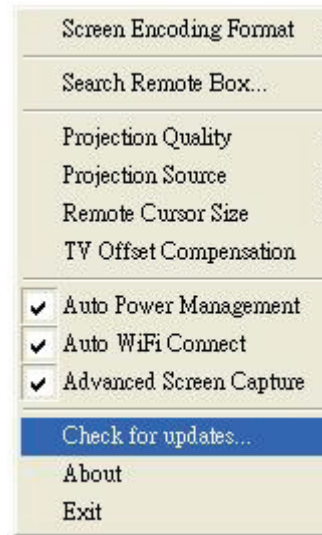
Enable "Advanced Screen Capture".



Tip windows is not shown in projector

Check for updates

Click <**Check for Updates**> to check for updates.



About

Click <**About**> to show system information. It includes product model name, Client version, IP address and other information



Exit

Click <Exit> to exit this application. It will stop current playing status and close the application immediate.

