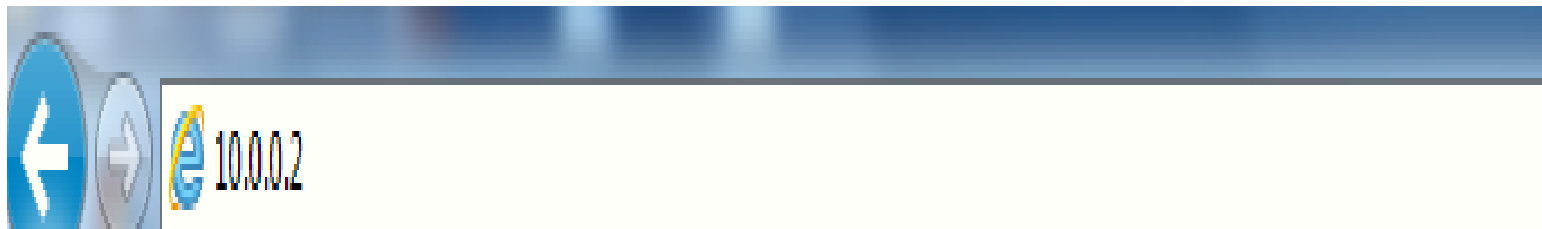


3G Setup Using The DSL-2750U

Please make sure the unit is on the latest firmware. You can download the firmware at <ftp.d-link.co.za>. If you are still unsure as to which firmware to download, then simply e-mail your query to support@d-link.co.za or call the D-Link Africa offices on +27 (0)12 661 2025/3,

How to Update the Firmware (If your unit is on the latest firmware, skip this step):

Logon to the unit through your web browser via the default IP address of the DSL - 2750U



1. Username : admin
2. Password : admin

Product Page: DSL-2750U

Firmware Version: AF_1.57_T10

D-Link

LOGIN

Welcome to DSL-2750U Web Management

Username : admin ▾

Password : ●●●●

Remember my login info.

Login

WIRELESS

Document Compiled By Andries Dique

Go to Maintenance, then Firmware Update and simply Browse to the firmware you downloaded earlier,

D-Link

DSL-2750U // SETUP ADVANCED **MAINTENANCE** STATUS HELP

System
Firmware Update
Access Controls
Diagnostics
System Log
Logout

FIRMWARE UPDATE

Step 1: Obtain an updated firmware image file from your ISP.

Step 2: Enter the path to the image file location in the box below or click the "Browse" button to locate the image file.

Step 3: Click the "Update Firmware" button once to upload the new image file.

NOTE: The update process takes about 2 minutes to complete, and your DSL Router will reboot. Please DO NOT power off your router before the update is complete.

FIRMWARE UPDATE

Current Firmware Version : AF_1.00_T10
Current Firmware Date : Sep 9 2011

Firmware File Name :

Helpful Hints...
Please Note: This page displays your device firmware version and information that will be helpful for D-Link technicians should you require any technical support. If your router is working without issue, there should be no need to update your firmware. This information is just for your reference as it is often unnecessary to upload new firmware to your router.
[More...](#)

WIRELESS

Document Compiled By Andries Dique

After the update you will need to restore the unit to its factory default settings,

The screenshot shows the D-Link web interface for a DSL-2750U router. The top navigation bar includes 'DSL-2750U', 'SETUP', 'ADVANCED', 'MAINTENANCE' (highlighted with a red box), 'STATUS', and 'HELP'. The left sidebar lists 'System', 'Firmware Update', 'Access Controls', 'Diagnostics', 'System Log', and 'Logout'. The main content area is divided into four sections:

- SYSTEM -- REBOOT**: Contains the text 'Click the button below to reboot the router.' and a 'Reboot' button.
- SYSTEM -- BACKUP SETTINGS**: Contains the text 'Back up DSL Router configurations. You may save your router configurations to a file on your PC. Note: Please always save configuration file first before viewing it.' and a 'Backup Settings' button.
- SYSTEM -- UPDATE SETTINGS**: Contains the text 'Update DSL Router settings. You may update your router settings using your saved files.' and a form with 'Settings File Name :', a text input field, a 'Browse...' button, and an 'Update Settings' button.
- SYSTEM -- RESTORE DEFAULT SETTINGS**: Contains the text 'Restore DSL Router settings to the factory defaults.' and a 'Restore Default Settings' button, which is highlighted with a red box and pointed to by a red arrow labeled '5'.

On the right side, there is a 'Helpful Hints...' section with text explaining the reboot and backup functions, and a 'More...' link.

Document Compiled By Andries Dique

Go to Setup, 3G Internet Setup and then click ADD,

D-Link

DSL-2750U

SETUP ADVANCED MAINTENANCE STATUS HELP

Wizard

Internet Setup

3G Internet Setup

Wireless Connection

Local Network

Time and Date

Logout

3G MOBILE SETUP

Choose Add, Remove or Edit to configure a WAN service For 3G Mobile interface.

WIDE AREA NETWORK (WAN) SERVICE FOR 3G MOBILE SETUP

modem status: NO USB CARD

Interface	Description	Type	Vlan8021p	VlanMuxId	Igmp	NAT	Firewall	Remove	Edit	Action
-----------	-------------	------	-----------	-----------	------	-----	----------	--------	------	--------

Add Remove Information Pin Manage Upload Driver

Document Compiled By Andries Dique

First Enable your USB mode function and make sure of the following settings,

1. APN – internet
2. Dial Number - *99#
3. Idle Time in sec – When you leave this blank the connection will always stay active and connect automatically whether after a reboot or when the device was inactive for a period of time,
- The default idle time is set to 360sec,
4. Choose your default connection. In this example the 3G will be the default,
5. Click on Apply/Save,

Product Page: DSL-2750U [Site Map](#) Firmware Version: AF_1.57_T10

D-Link

DSL-2750U // **SETUP** ADVANCED MAINTENANCE STATUS HELP

Wizard
Internet Setup
3G Internet Setup
Wireless Connection
Local Network
Time and Date
Print Server
Logout

3G USB MOBILE MODEM SETUP

This screen allows you to configure a 3G wan interface.

WIDE AREA NETWORK (WAN) SERVICE FOR 3G MOBILE SETUP

Enable USB Modem **9. Enable USB Modem**

User Name:
Password:
Authentication Method: AUTO
APN: internet **10. APN - internet**
Dial Number: *99# **11. Dial Number - *99#**
Idle time(in sec.): **12. Idle Time - Leave blank if connection needs to be constant**

Net Select: Auto
 Dial on demand
Dial Delay(in sec.): 10
Default WAN Connection Select: 3G **13. Choose default connection**
WAN backup mechanism: DSL IP connectivity

Apply/Save **14. Click Apply/Save** Auto Setting

WIRELESS

Helpful Hints...
When configuring the 3G router to access the Internet, be sure to choose the correct **Connection Type** from the list below.
Please take care when entering your **username** and **password** as these are case sensitive. The majority of connection issues are caused by incorrect **username** or **password** combinations.

Document Compiled By Andries Dique

Insert the USB modem and wait for 20 seconds,

D-Link

DSL-2750U

SETUP ADVANCED MAINTENANCE STATUS HELP

Wizard

Internet Setup

3G Internet Setup

Wireless Connection

Local Network

Time and Date

Logout

3G MOBILE SETUP

Choose Add, Remove or Edit to configure a WAN service For 3G Mobile interface.

WIDE AREA NETWORK (WAN) SERVICE FOR 3G MOBILE SETUP

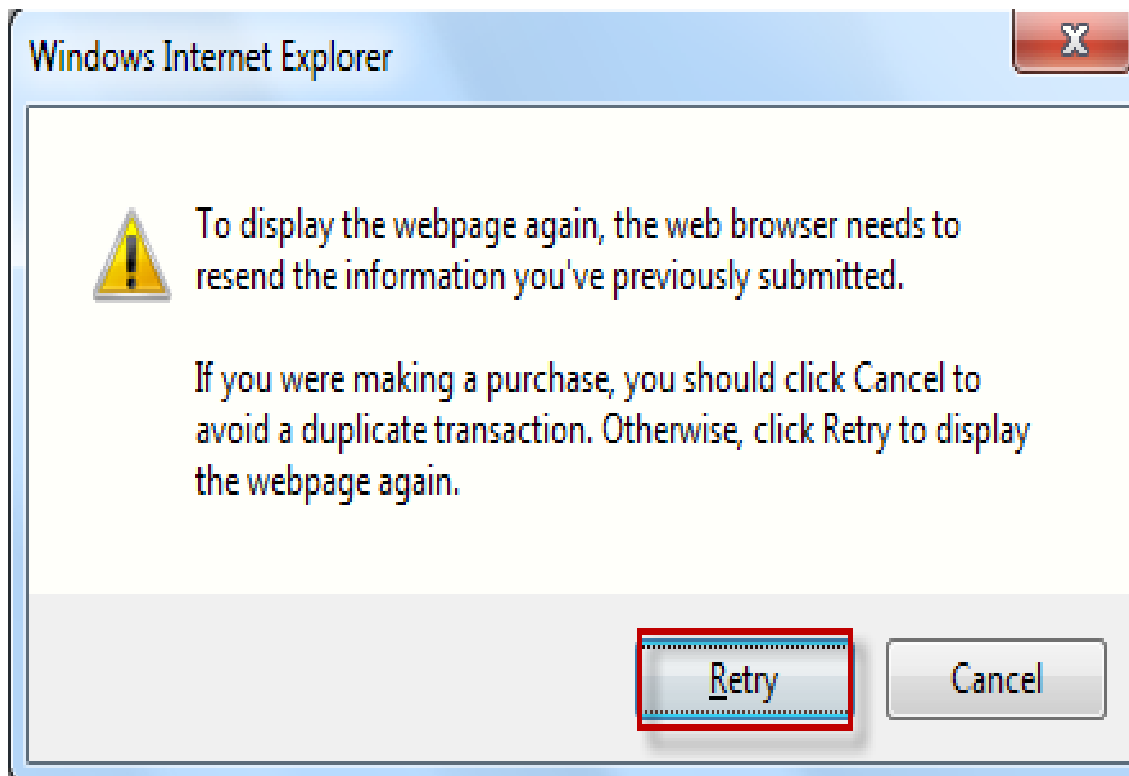
modem status: NO USB CARD

Interface	Description	Type	Vlan8021p	VlanMuxId	Igmp	NAT	Firewall	Remove	Edit	Action
ppp3g0	mobile	mobile	N/A	N/A	Disabled	Enabled	Enabled	--	edit	Dial

Add Remove Information Pin Manage Upload Driver

Document Compiled By Andries Dique

Refresh the page and click retry. This can be done by pressing F5 on your keyboard,



Wait for 30 to 60 seconds and refresh the page again, go to Setup and 3G Internet setup again,

D-Link

DSL-2750U // **SETUP** ADVANCED MAINTENANCE STATUS HELP

Wizard
Internet Setup
3G Internet Setup
Wireless Connection
Local Network
Time and Date
Logout

3G MOBILE SETUP

Choose Add, Remove or Edit to configure a WAN service For 3G Mobile interface.

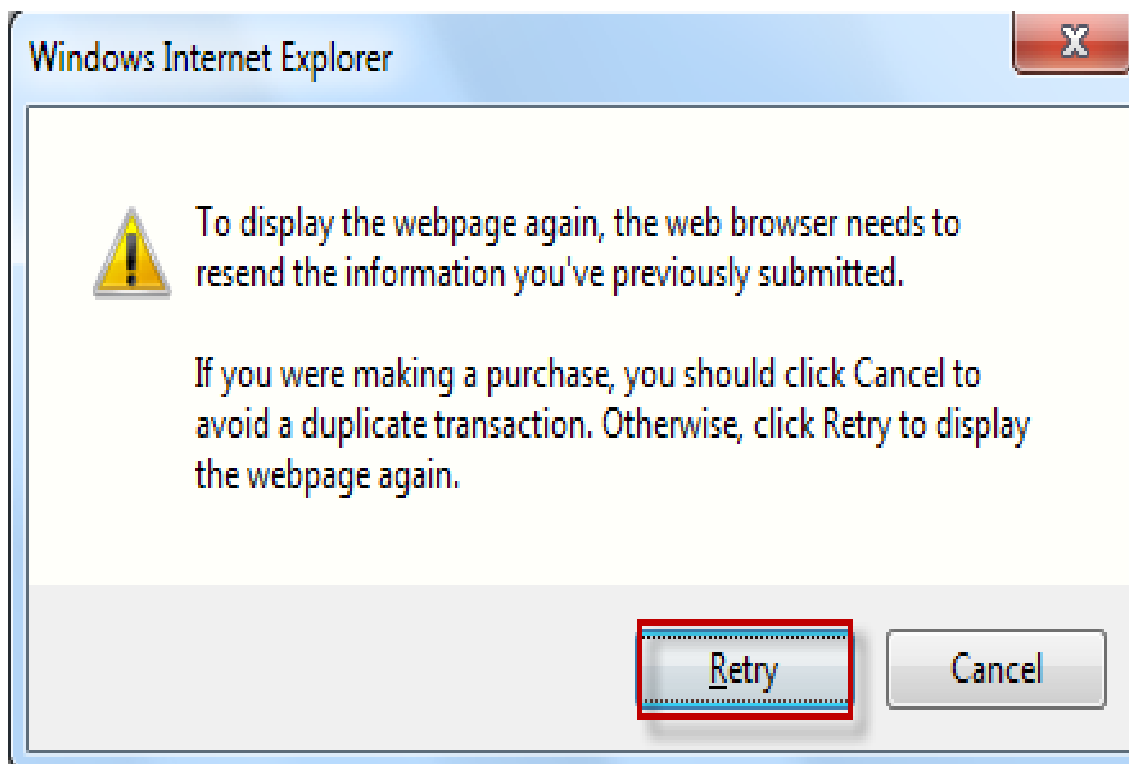
WIDE AREA NETWORK (WAN) SERVICE FOR 3G MOBILE SETUP

modem status: switching... please wait for serval minutes!

Interface	Description	Type	Vlan8021p	VlanMuxId	Igmp	NAT	Firewall	Remove	Edit	Action
ppp3g0	mobile	mobile	N/A	N/A	Disabled	Enabled	Enabled	--	edit	Dial

Add Remove Information Pin Manage Upload Driver

Document Compiled By Andries Dique



You should now be connected (you have the option to un-dial the connection and re-dial it at a later preferred stage, Click on the Information TAB to view your 3G modem details,

D-Link

DSL-2750U // SETUP ADVANCED MAINTENANCE STATUS HELP

Wizard
Internet Setup
3G Internet Setup
Wireless Connection
Local Network
Time and Date
Logout

3G MOBILE SETUP

Choose Add, Remove or Edit to configure a WAN service For 3G Mobile interface.

WIDE AREA NETWORK (WAN) SERVICE FOR 3G MOBILE SETUP

modem status: CONNECTED

Interface	Description	Type	Vlan8021p	VlanMuxId	Igmp	NAT	Firewall	Remove	Edit	Action
ppp3g0	mobile	mobile	N/A	N/A	Disabled	Enabled	Enabled	--	edit	Undial

Add Remove **Information** Pin Manage Upload Driver

Click on information for details on your modem

Document Compiled By Andries Dique

The information page,

DSL-2750U

SETUP ADVANCED MAINTENANCE STATUS

Wizard

Internet Setup

3G Internet Setup

Wireless Connection

Local Network

Time and Date

Logout

3G USB MOBILE MODEM INFORMATION

This page displays a summary overview of your 3G USB mobile Modem information.

WIDE AREA NETWORK (WAN) SERVICE FOR 3G MOBILE SETUP

Product Name:	ZTE WCDMA Technologies MSM
Product Type:	
Product IMEI:	
Manufacturer:	ZTE, Incorporated
USIM IMSI:	
Service Provider Code:	default(default)
Singal Intensity:	
Singal Ber(RXQUAL):	
Charge Value:	

Document Compiled By Andries Dique

Login to the router again and this time go to the Status page, Device info, Choose Mobile to view your 3G connection status,

The screenshot shows the D-Link router's web interface. The top navigation bar includes 'DSL-2750U', 'SETUP', 'ADVANCED', 'MAINTENANCE', 'STATUS', and 'HELP'. The 'STATUS' tab is selected. On the left sidebar, 'Device Info' is highlighted. The main content area is divided into sections: 'DEVICE INFO' (with a 'Go To Status' link), 'SYSTEM INFO' (with a 'Go To Device Info' link), and 'INTERNET INFO'. In the 'INTERNET INFO' section, the 'Internet Connection' dropdown menu is open, showing 'mobile' selected. Below this, a table titled 'Your 3G Connection' lists enabled WAN connections. The 'mobile' connection is highlighted with a red box.

D-Link

DSL-2750U // SETUP ADVANCED MAINTENANCE **STATUS** HELP

Device Info (highlighted in sidebar)

DEVICE INFO

This information reflects the current status of your DSL connection. [Go To Status](#)

SYSTEM INFO

[Go To Device Info](#)

Model Name:	DSL-2750U
Time and Date:	Mon Jul 18 00:29:28 2011
Firmware Version:	AF_1.57_T10

INTERNET INFO

Internet Connection: (dropdown menu open showing 'mobile' selected)

Internet Connection:	mobile	Unconfigured
Default Gateway:		
Preferred DNS Server:		0.0.0.0
Alternate DNS Server:		0.0.0.0
Connection Up Time:		0 day,0 hour,0 min,0 sec
Downstream Line Rate (Kbps):		0
Upstream Line Rate (Kbps):		0

Your 3G Connection

Enabled WAN Connections:					
VPI/VCI	Service Name	Protocol	IGMP	QoS	IPv4 Address
8/35	pppoe_0_8_35_1	PPPoE	Disabled	Enable	0.0.0.0
0/35	mobile	PPPoE	Disabled	Disabled	197.168.250.80

Helpful Hints... This page displays a summary overview of your router status, including device software version, summary of your Internet configuration including wireless and Ethernet status. [More...](#)

Document Compiled By Andries Dique