

D-Link Quick Installation Guide

This product can be used with the following operating systems:
Windows XP, 2000



DPH-20U
VoIP USB Phone

Before You Begin

You must have at least the following:

- Pentium 400MHz or Higher
- One Available USB Port
- 128MB RAM
- 100MB Space
- CD-ROM
- Windows XP/2000
- DSL/Cable Modem Internet Connection

Check Your Package Contents

These are the items included with your purchase :

If any of the above items are missing, please contact your reseller.

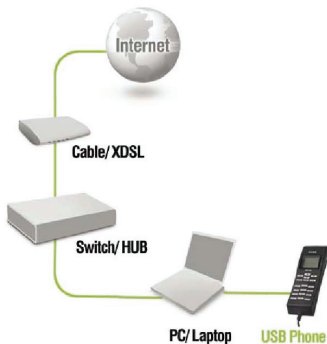


- **DPH-20U VoIP USB Phone**



- **CD-ROM (containing Manual and Installation program)**

1 Connecting DPH-20U to your PC



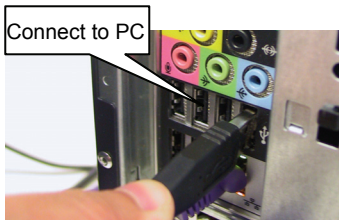
2 Installing the Skype™

If Skype™ is not already installed on your computer, visit <http://www.skype.com> and follow the instructions there to install Skype™. Verify that Skype™ is working before installing the DPH-20U VoIP USB Phone.

3 Installing the DPH-20U Utility

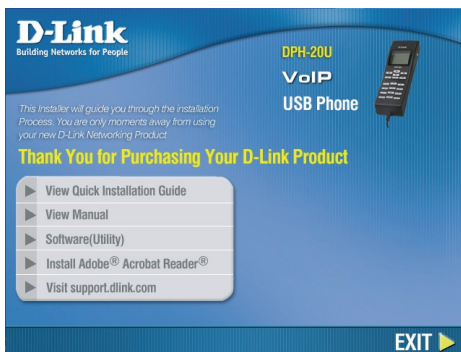
STEP 1.

Connect the USB cable to the PC or NB as shown below:



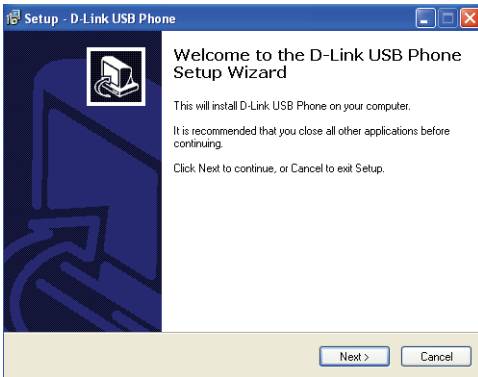
STEP 2.

Insert the supplied CD-ROM into your PC CD-ROM drive. The installation should start automatically. Please press "Software(Utility)".



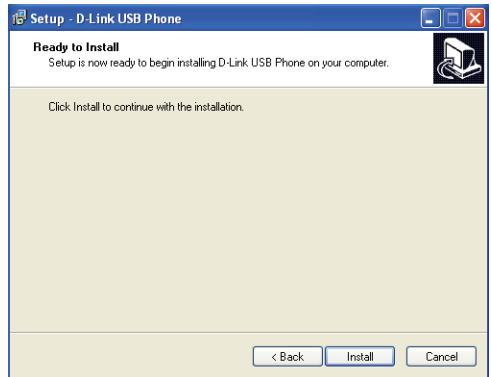
STEP 3.

You will see the following popup.
Press Next to proceed or cancel to stop the install processes.



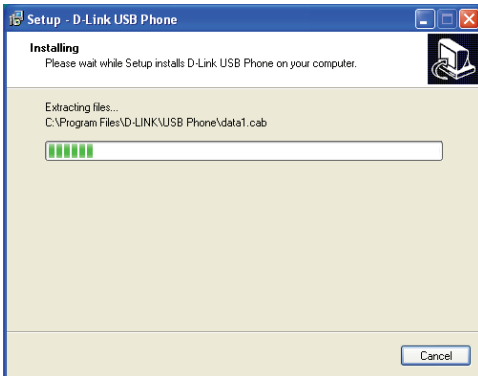
STEP 4.

You will see the following popup.
Press the Install and stare to install the DPH-20U Utility.



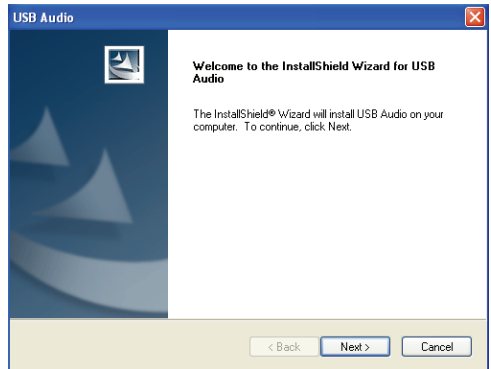
STEP 5.

You will see the following progress bar below indicating that the installation is proceeding.



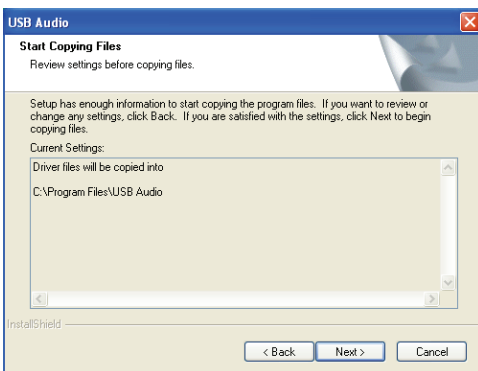
STEP 6.

The program installing audio driver.
Press Next.



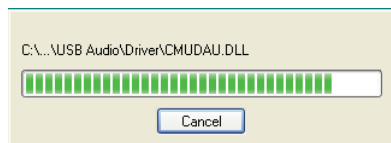
STEP 7.

You will see the driver install path.
Press Next.



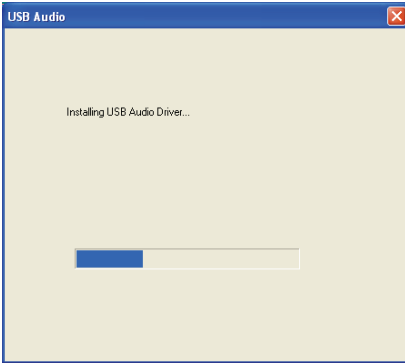
STEP 8.

You will see the following progress bar below indicating that the installation is proceeding



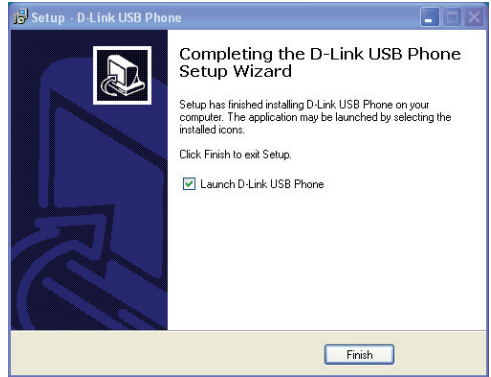
STEP 9.

You will see the following progress bar below indicating that the installation is proceeding



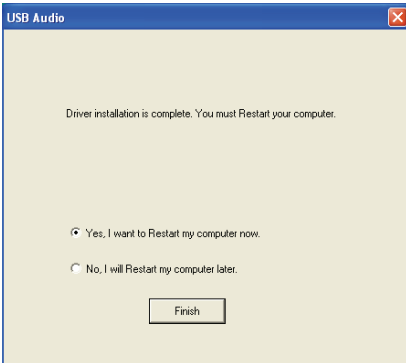
STEP 10.

You will see the following popup. Press Finish to close the installation



STEP 11.

You will see the following popup. Press Finish to close the program and restart computer



STEP 12.

When you will see the following screen, select the option, "allow this program to use Skype" and press the OK button.

