

D-Link Quick Installation Guide

This product can be setup using any current Web browser, i.e., Internet Explorer 6 or Netscape Navigator 7.0



DP-G321
AirPlus™ G 802.11g/2.4GHz
Wireless Multi-Port
Print Server

Before You Begin:

You will need an Ethernet-enabled device, such as a laptop or desktop computer and a USB or LPT printer that will connect to the DP-G321.

IMPORTANT: TURN OFF the power to the printer BEFORE installing the DP-G321

Check Your Package Contents



DP-G321 AirPlus™ G Wireless Multi-Port Print Server



CD-ROM (Software, Manual and Warranty)



5V DC, 2.5A Power Adapter



Using a power supply with a different voltage rating will damage this product and void its warranty.

If any of the above items are missing, please contact your reseller.

1

Connecting the DP-G321 to Your Network

Antenna: Used to wirelessly connect to 802.11b/g adapters.

LAN Port: Connects to a router or switch.

USB Ports: Used to connect USB printers.

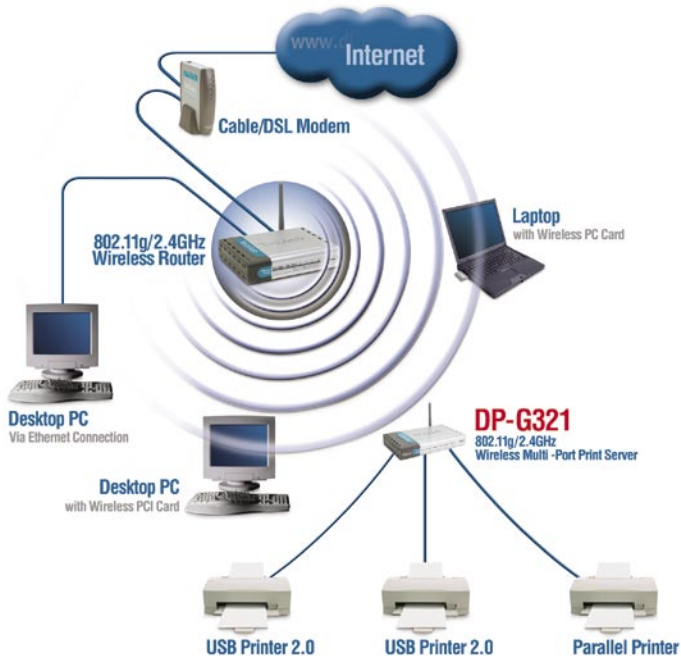
LPT Port: Used to connect a standard parallel printer.

Power Receptor: Connects the AC Power Adapter



Warning!

Only attach USB printers to the USB ports of the DP-G321. Do not connect any other USB device to the DP-G321's USB port! Other devices may damage the unit and void the warranty.



1

Connecting the DP-G321 to Your Network (continued)

Note: Don't connect the power cord to the DP-G321 until you are advised to do so.



For Mac OS printing, please refer to manual (.pdf) located on the CD-ROM.

- A. Insert one end of a straight-through CAT5 Ethernet cable into the DP-G321's LAN Port. Connect the other end to an Ethernet port on your gateway or switch.
- B. Make sure that your Printer is turned **OFF**.
- C. Attach one end of your printer cable to the appropriate port on the DP-G321 and the other end to the corresponding port on your printer.
- D. Turn **ON** the printer. Repeat steps B-D for each printer before proceeding to step E.
- E. Plug one end of the power adapter into the DP-G321 and the other end into your electric outlet. The DP-G321 will turn on and begin a self-test.

2

Configuring the DP-G321

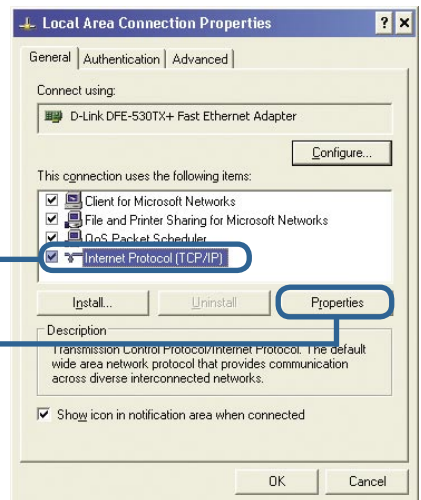
For additional Windows operating system setup or information on the Web-management interface, refer to the manual located on the CD-ROM.

The factory default IP address of the DP-G321 is **192.168.0.10**. The IP address of the DP-G321 must be in the same range as your network. You can change the IP address of the DP-G321 to match the IP address scheme of your existing network. To access the Print Server's Web configuration interface, assign an IP address on one of the wired PCs on your network to the same IP scheme as the Print Server.

Go to **Start > Right-click on My Network Places > select Properties > Right click on the Network Connection associated with your Network Adapter and select Properties.**

Click **Internet Protocol (TCP/IP)**

Click **Properties**



2

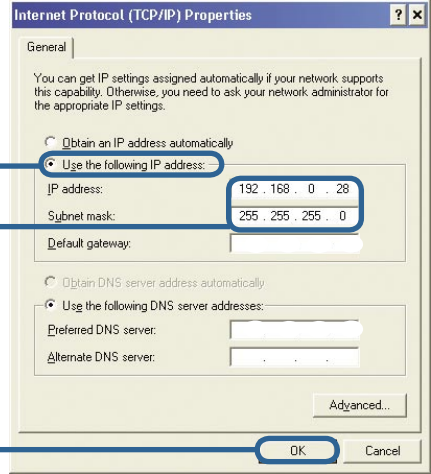
Configuring the DP-G321 (continued)

Input a static IP address in the same range as the print server. (192.168.0.xx)

Select **Use the following IP address**

IP address: **192.168.0.28**
Subnet mask: **255.255.255.0**

Click **OK**



Click **OK** to apply the new settings

Open your Web browser and type **http://192.168.0.10** into the URL address box. Then press the **Enter** or **Return** key.

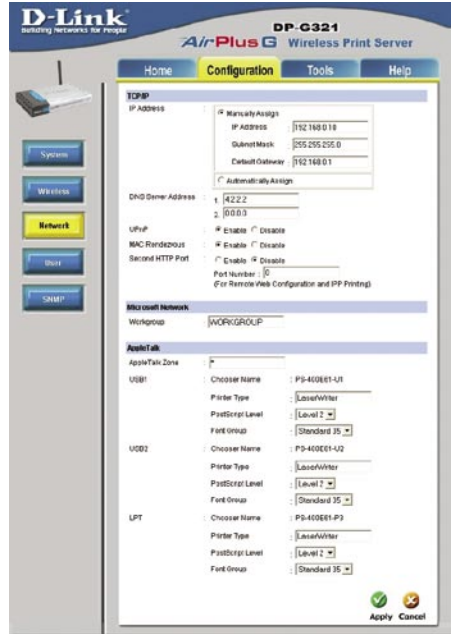


2

Configuring the DP-G321 (continued)

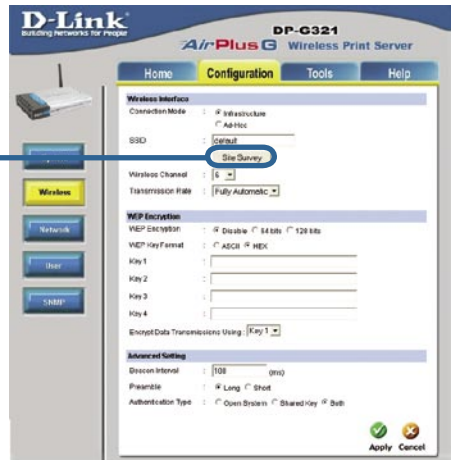
The IP address of the DP-G321 can be modified from the **Network** option under the **Configuration** tab.

This Quick Installation Guide will use the Print Server's default IP address in all examples. Make the appropriate changes if you have modified the DP-G321's IP address.



Click on the **Wireless** button under the **Configuration** tab to view the wireless settings.

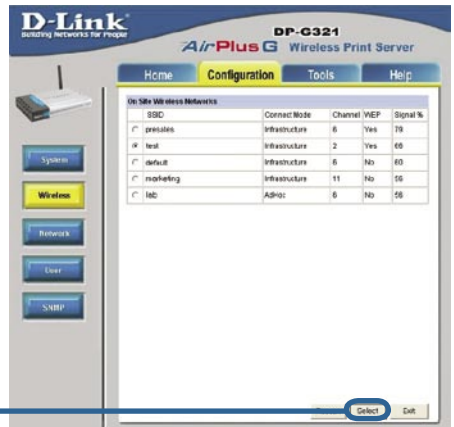
Click Site Survey



2

Configuring the DP-G321 (continued)

A list of available wireless networks will appear. If you do not see the network you are looking for, click Rescan at the bottom of the page.



This screen only appears if you selected a wireless network with WEP enabled. If so, you must enter the encryption information and click OK.



Select the **System** button under the **Configuration** tab to view the Print Server and Port names. If you change the names of the ports, please make note of them as they will be needed during the Add Printer Wizard.

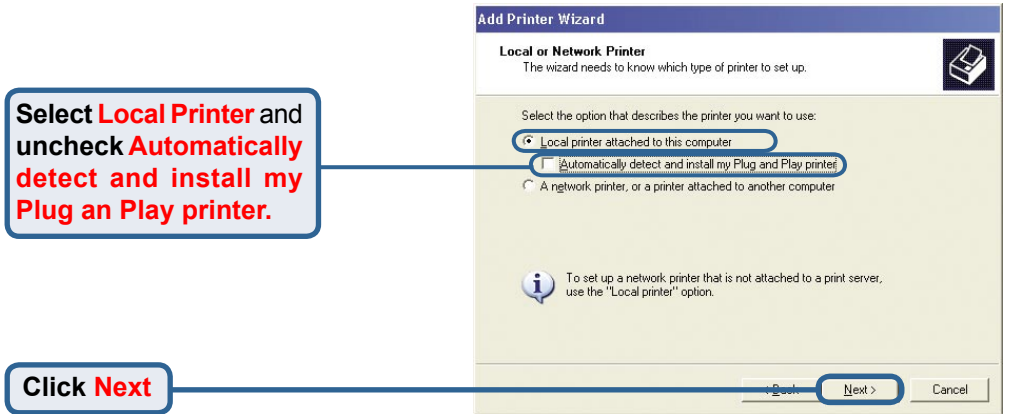
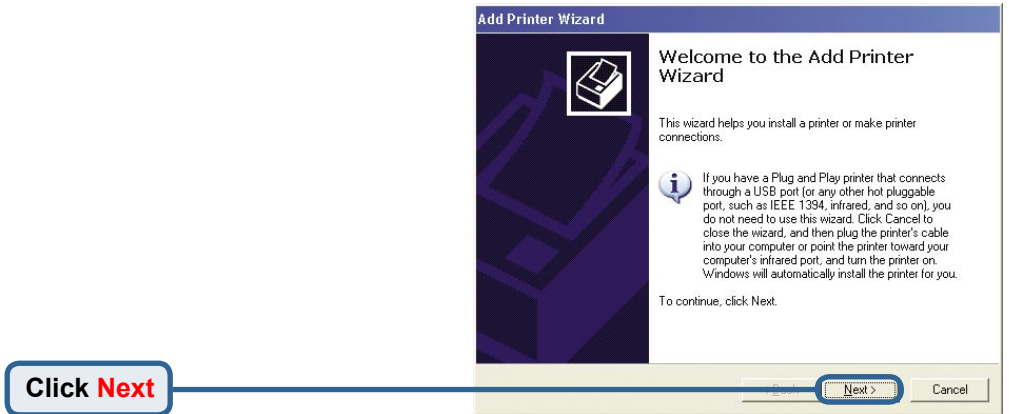
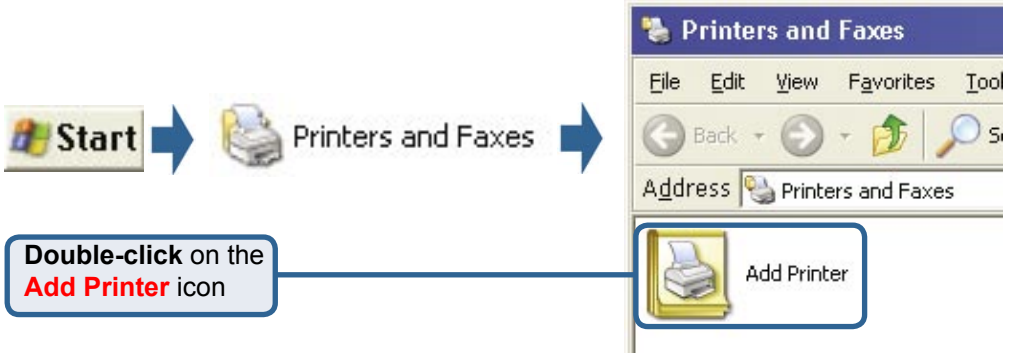


3

The Add Printer Wizard

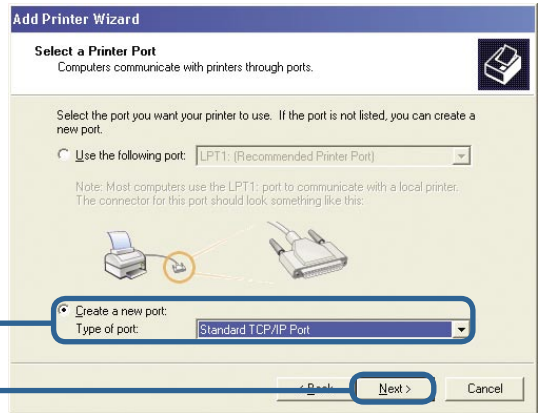
For Windows XP:

Go to the **Start** menu > **Printers and Faxes** > **Add a Printer**



3

The Add Printer Wizard (continued)

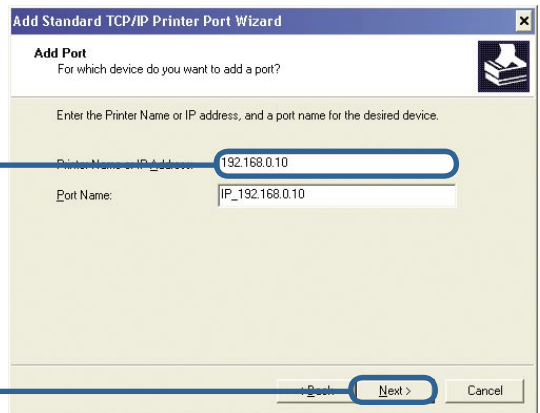


Select **Create a new port** and choose **Standard TCP/IP Port** from the drop-down menu.

Click **Next**



Click **Next**



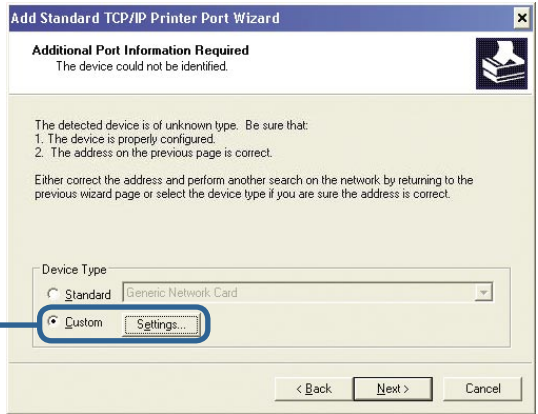
Type **192.168.0.10**

The Port Name will fill in automatically.

Click **Next**

3

The Add Printer Wizard (continued)



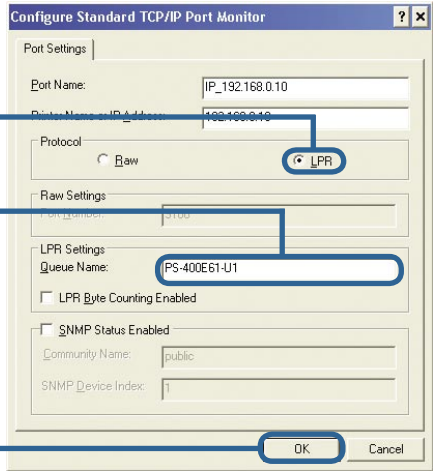
Select **Custom** and click the **Settings** button

Select **LPR**

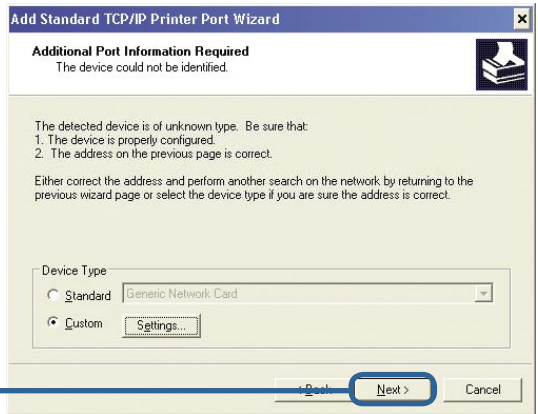
Enter the **Port** name for the port the printer is attached to.

Default port names differ with the device MAC ID:
PS-xxxxxx-U1 (for USB Port 1)
PS-xxxxxx-U2 (for USB Port 2)
PS-xxxxxx-P3 (for LPT Port)

Click **OK**

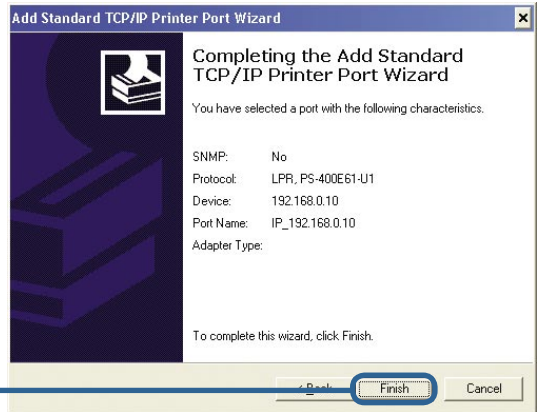


Click **Next**



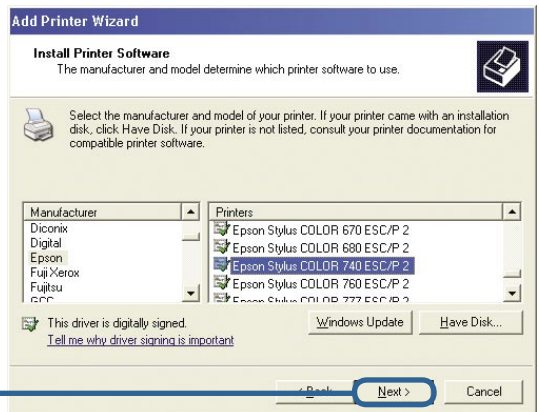
3

The Add Printer Wizard (continued)



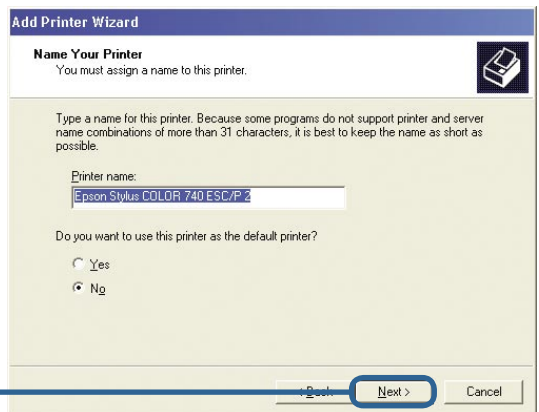
Click **Finish**

In this window, scroll down and select your printer manufacturer and model. (If it is not listed, insert the driver CD or diskette that came with your printer and click Have Disk.)



Click **Next**

The printer name and default printer settings are configured here.



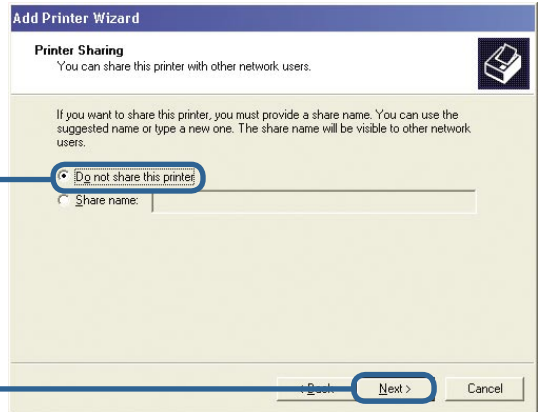
Click **Next**

3

The Add Printer Wizard (continued)

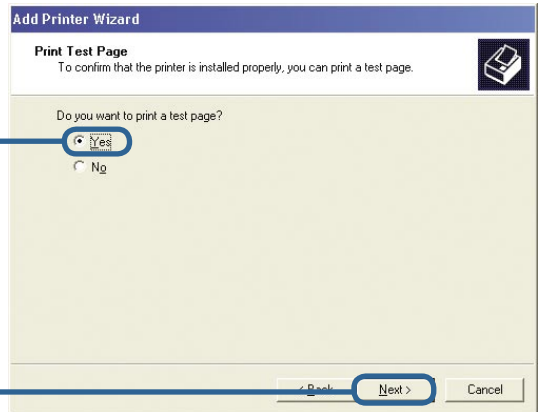
By opting to not share the printer, each system will print directly to the print server.

Select **Do not share this printer**



Click **Next**

Select **Yes** to print a test page

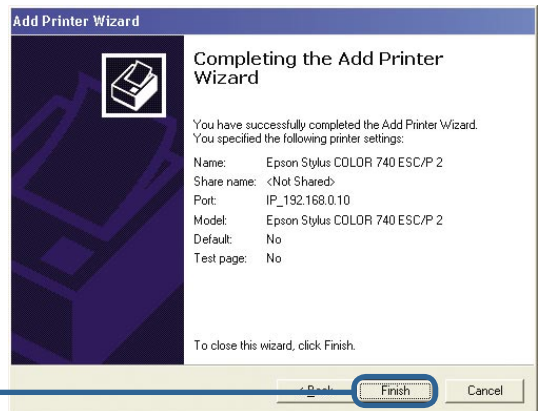


Click **Next**

Click Finish to complete the Add Printer Wizard.

Repeat the Add Printer Wizard steps for each Printer/Port and repeat the entire process on each system that will be printing.

Click **Finish**



Your Setup is now complete!

Technical Support

You can find software updates and user documentation on the D-Link website.

D-Link provides free technical support for customers within the United States and within Canada for the duration of the warranty period on this product.

U.S. and Canadian customers can contact D-Link technical support through our website, or by phone.

Tech Support for customers within the United States:

D-Link Technical Support over the Telephone:

(877) 453-5465

24 hours a day, seven days a week

D-Link Technical Support over the Internet:

<http://support.dlink.com>

[email:support@dlink.com](mailto:support@dlink.com)

Tech Support for customers within Canada:

D-Link Technical Support over the Telephone:

(800) 361-5265

Monday to Friday 7:30am to 12:00am EST

D-Link Technical Support over the Internet:

<http://support.dlink.ca>

[email:support@dlink.ca](mailto:support@dlink.ca)

D-Link[®]
Building Networks for People