

# D-Link Quick Installation Guide

This product can be setup using any current web browser, i.e., Internet Explorer 6 or Netscape Navigator 7.0



**DP-G310**  
AirPlus™ G 2.4GHz  
Wireless Print  
Server

## Before You Begin

You will need an Ethernet-enabled device, such as a laptop or desktop computer and a USB printer that will connect to the DP-G310.

**Important: TURN OFF the power to the printer before installing the DP-G310.**

## Check Your Package Contents




**DP-G310 AirPlus™ G Wireless USB Print Server**



**CD-ROM (Software, Manual and Warranty)**



**5V DC 2.5A Power Adapter**

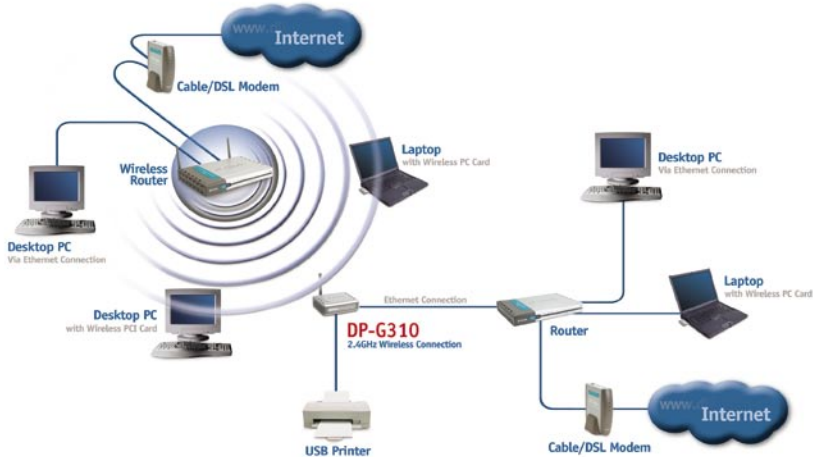
 Using a power supply with a different voltage rating will damage this product and void its warranty.

If any of the above items are missing, please contact your reseller.

# 1

## Connecting The DP-G310 To Your Network

First, insert one end of a straight-through CAT5 Ethernet RJ-45 cable into the “Network Port” (shown below.) Connect the other end of the cable to the LAN port of the gateway or switch. *Note: Do not connect the power cord to the DP-G310 until you are advised to do so.*



### Warning!

Only a USB printer may be connected to the USB port of the DP-G310. Do not connect any other USB device to the USB port; doing so may damage the unit, voiding the warranty for this product.

Next, make sure that the Printer is turned **OFF**.

Using the USB cable, connect one end of the cable to the USB port of the DP-G310 (shown below) and the other end to the USB port of the printer. Turn **ON** the printer.



Then, plug one end of the power adapter into the DP-G310 and the other end into your electric outlet. The DP-G310 will turn on and begin a self-test.



For Mac OS printing, please refer to manual (.pdf) located on the CD-ROM.

# 2

## Setting up your DP-G310 for network printing in Windows XP

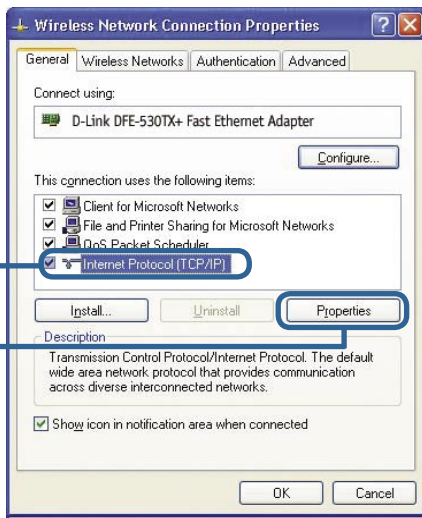
For additional Windows operating system setup or information on the web-management interface, refer to the manual located on the CD-ROM.

The factory default IP address of the DP-G310 is 192.168.0.10. In order to network to the printer through the DP-G310, the DP-G310 must have the same IP network settings as your network. IP address can be assigned manually or automatically by DHCP, BOOTP or RARP. To access the print server's web configuration, manually assign an IP address on one of the wired PC's on your network to the same subnet as the print server.

Go to **Start > right click on My Network Places > select Properties > Double-click on the Network Connection** associated with your Network Adapter.

Click **Internet Protocol (TCP/IP)**

Click **Properties**

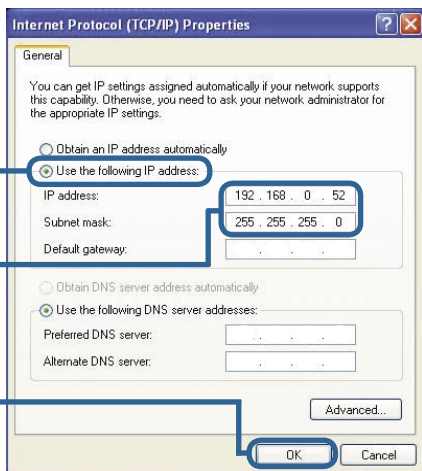


Input a static IP address in the same range as the print server.

Select **Use the following IP address**

**IP address: 192.168.0.52**  
**Subnet mask: 255.255.255.0**

Click **OK**



# 2

## Setting up your DP-G310 for network printing in Windows XP

(continued)

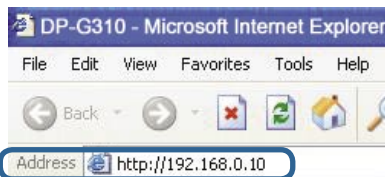
*\*Note: Please notice that if you connect your printer server in a LAN where a DHCP server is present. The IP address will differ from the one in the example 192.168.0.10.*

Click OK to apply IP address settings.



Click **OK**

Using your web browser enter the IP address of the DP-G310. By default the IP address is set to **192.168.0.10**



The IP address of the DP-G310 can be modified on the **Network** tab of the web configuration menu.

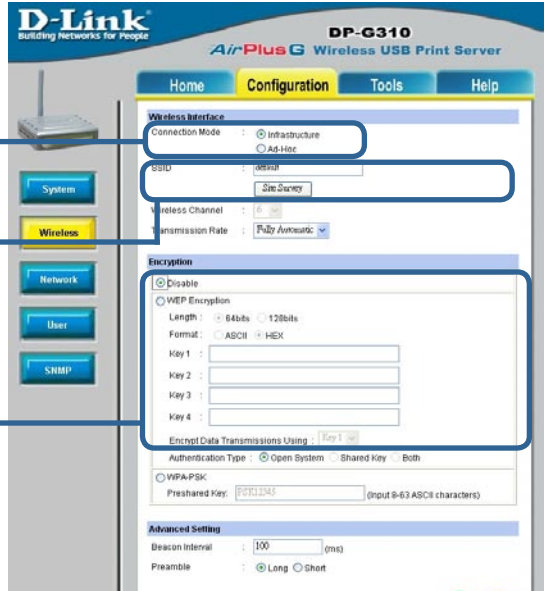
The following instructions use the print server's default IP address as an example. Make the appropriate changes if you modify the DP-G310's IP address.



# 2

## Setting up your DP-G310 for network printing in Windows XP (continued)

Click on the **Configuration** tab to view the current **Wireless Settings**.

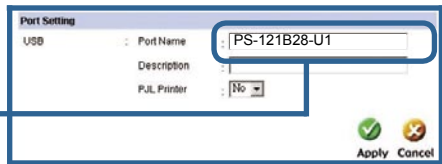


1 Select your **Connection Mode**

2 Enter the **SSID** of the remote access point or wireless router you wish to connect to.

3 If you would like to set **WEP Encryption**, select the encryption level and the key here.

Click on the **System** tab to view the current **Port Settings**.



⚠ Write down on a piece of paper the Port name that you wish to use.

1 **What is Infrastructure and Ad-Hoc Mode?**  
**Ad-Hoc:** Refers to two or more 802.11b wireless devices that communicate directly with one another without using an access point or any connection to a wired network.  
**Infrastructure:** Refers to an 802.11 network in which wireless devices communicate with each other by first going through an Access Point (AP) or wireless router.

2 **What is an SSID?**  
A workgroup name of your Wireless Network. All wireless devices must all have the same SSID to communicate on the Wireless Network. All D-Link Wireless devices have the default SSID of default, all lower case.

3 **How does WEP Work?**  
**64 bit WEP** encryption uses a 10 hexadecimal character key. **128 bit WEP** uses a 26 hexadecimal character key. The WEP encryption key must match the WEP settings on your AP or wireless router to connect properly.

# 2

## Setting up your DP-G310 for network printing in Windows XP (continued)

### For Windows XP:

Go to Start>Printers and Faxes>Add a Printer or Go to Start>Control Panel>Printers and Faxes



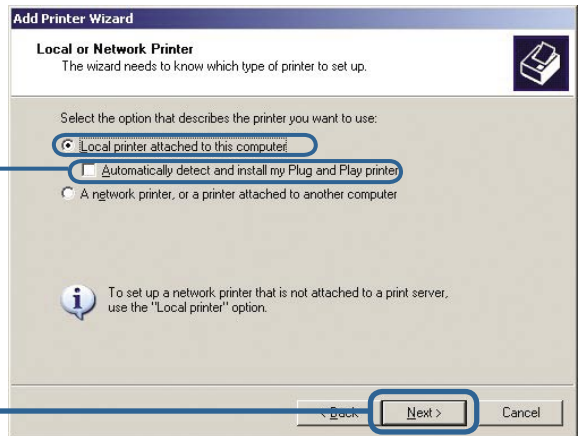
Double-click on the "Add Printer" icon



Click Next

Select "Local Printer."

Please make sure to **deselect Automatically detect and install my Plug and Play printer.**



Click Next

# 2

## Setting up your DP-G310 for network printing in Windows XP (continued)

Select “**Create a new port.**”  
At the pull-down menu, highlight  
“**Standard TCP/IP Port.**”

Click **Next**

**Add Printer Wizard**

**Select a Printer Port**  
Computers communicate with printers through ports.

Select the port you want your printer to use. If the port is not listed, you can create a new port.

Use the following port: LPT1: (Recommended Printer Port)

Note: Most computers use the LPT1: port to communicate with a local printer. The connector for this port should look something like this:

Create a new port:  
Type of port: Standard TCP/IP Port

Back Next > Cancel

Click **Next**

**Add Standard TCP/IP Printer Port Wizard**

Welcome to the Add Standard TCP/IP Printer Port Wizard

You use this wizard to add a port for a network printer.

Before continuing be sure that:

1. The device is turned on.
2. The network is connected and configured.

To continue, click Next.

Back Next > Cancel

Type in the IP address of the  
print server. (i.e. 192.168.0.10)  
The port name will automatically  
be filled in.

Click **Next**



This may take a few seconds

**Add Standard TCP/IP Printer Port Wizard**

**Add Port**  
For which device do you want to add a port?

Enter the Printer Name or IP address, and a port name for the desired device.

Printer Name or IP Address: 192.168.0.10

Port Name: IP\_192.168.0.10

Back Next > Cancel



# 2

## Setting up your DP-G310 for network printing in Windows XP (continued)

Select **“Custom”**  
Then click on **Settings**.

Click **Settings**

**Additional Port Information Required**  
The device could not be identified.

The detected device is of unknown type. Be sure that:  
1. The device is properly configured.  
2. The address on the previous page is correct.

Either correct the address and perform another search on the network by returning to the previous wizard page or select the device type if you are sure the address is correct.

Device Type  
 Standard Generic Network Card  
 Custom **Settings...**

< Back Next > Cancel

Select **“LPR”**

Input the port name of the port being used by the printer

Click **OK**

**Configure Standard TCP/IP Port Monitor**

Port Settings  
Port Name: IP\_192.168.0.10  
Printer Name or IP Address: 192.168.0.10  
Protocol  
 Raw  
 **LPR**

Raw Settings  
Port Number: 515

LPR Settings  
Queue Name: **PS-121B28-U1**

LPR Byte Counting Enabled  
 SNMP Status Enabled  
Community Name: public  
SNMP Device Index: 1

**OK** Cancel

Click **Next**

**Additional Port Information Required**  
The device could not be identified.

The detected device is of unknown type. Be sure that:  
1. The device is properly configured.  
2. The address on the previous page is correct.

Either correct the address and perform another search on the network by returning to the previous wizard page or select the device type if you are sure the address is correct.

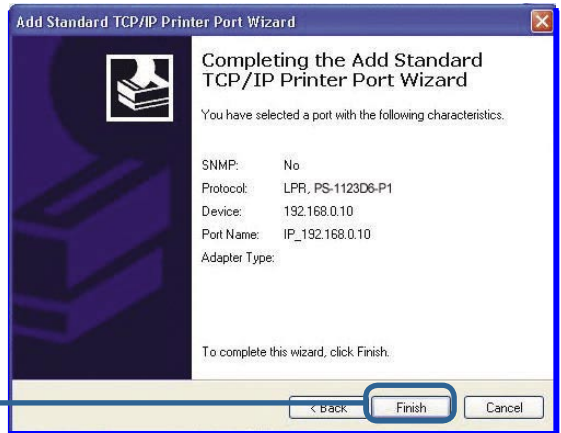
Device Type  
 Standard Generic Network Card  
 Custom Settings...

< Back **Next >** Cancel

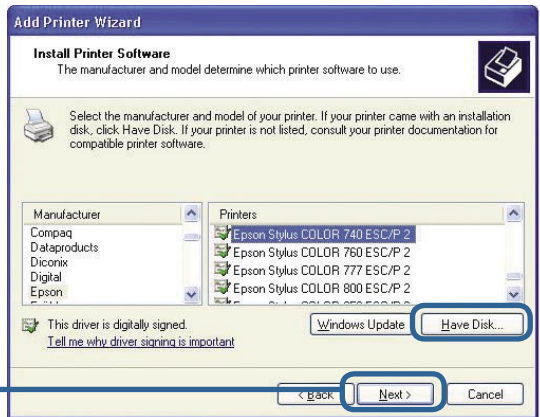


# 2

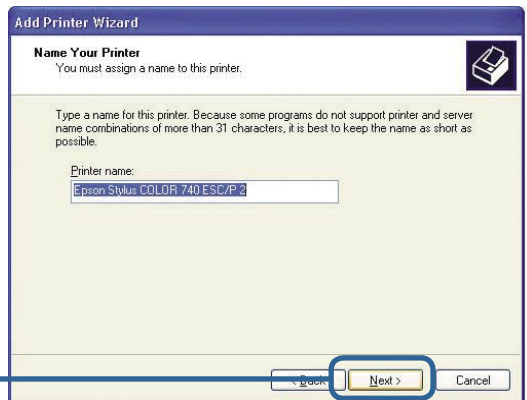
## Setting up your DP-G310 for network printing in Windows XP (continued)



In this window, scroll down to find your printer. (If it is not listed, insert the driver CD or diskette that came with your printer.) Click on **“Have Disk...”** Then, scroll down and highlight the printer.



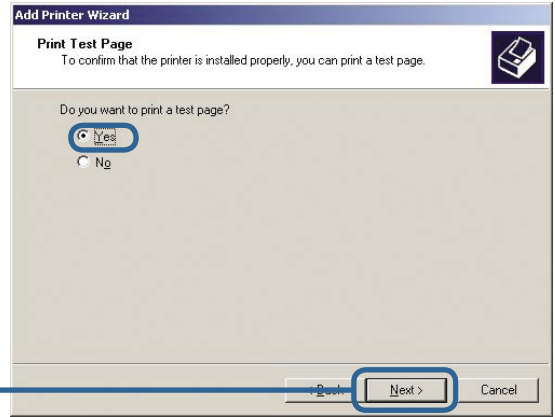
At this screen, you can input a name for this printer.



## 2

# Setting up your DP-G310 for network printing in Windows XP (continued)

Select “Yes” to print a test page



## 3

# Your Setup is Complete!

The printer is now ready for printing with Windows XP, on your network.



