

# USER MANUAL

KVM-222

VERSION 1.0



---

# Table of Contents

<b>Product Overview</b> .....	<b>4</b>
Package Contents .....	4
System Requirements .....	4
Features .....	5
<b>KVM Installation</b> .....	<b>6</b>
Hardware Installation.....	6
Hardware Overview .....	7
Windows Installation.....	8
MAC Installation .....	9
<b>KVM Operation</b> .....	<b>10</b>
Accessing the KVM - Windows.....	10
Accessing the KVM - MAC .....	11
Accessing the KVM - Linux.....	12
<b>Troubleshooting</b> .....	<b>13</b>
Troubleshooting .....	13
<b>Appendix A - Technical Specifications</b> .....	<b>14</b>
Technical Specifications .....	14

---

# Preface

D-Link reserves the right to revise this publication and to make changes in the content hereof without obligation to notify any person or organization of such revisions or changes.

## Manual Revisions

Revision	Date	Description
1.0	May 17, 2010	KVM-222 Revision A1 with firmware version 1.00

## Trademarks

D-Link and the D-Link logo are trademarks or registered trademarks of D-Link Corporation or its subsidiaries in the United States or other countries. All other company or product names mentioned herein are trademarks or registered trademarks of their respective companies.

Copyright © 2010 by D-Link Systems, Inc.

All rights reserved. This publication may not be reproduced, in whole or in part, without prior expressed written permission from D-Link Systems, Inc.

# Package Contents



**KVM-222**



**Installation Guide**



**CD-ROM**

If any of the above items are missing, please contact your reseller.

## System Requirements

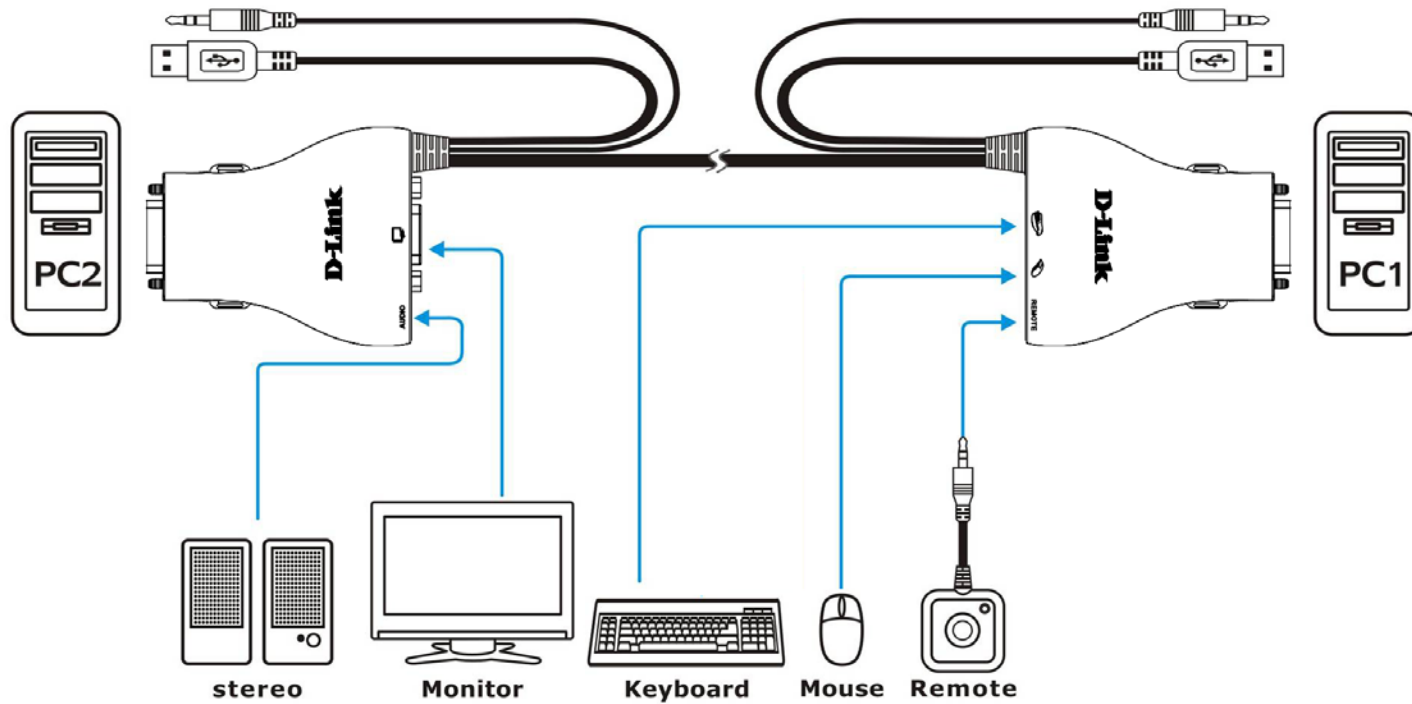
- Windows 2000 / XP / Vista / 7
- Linux
- Mac OS (10.3 and higher)

# Features

- Access two PCs using a single console
- Saves space and saves money
- Select PCs by using Remote Control button or Hot key commands or AP
- Support SVGA, VGA, XGA, WXGA, UXGA, WUXGA, QXGA and multi-sync monitors (resolutions of up to 2048\*1536)
- Remote control
- Audio support

# Hardware Installation

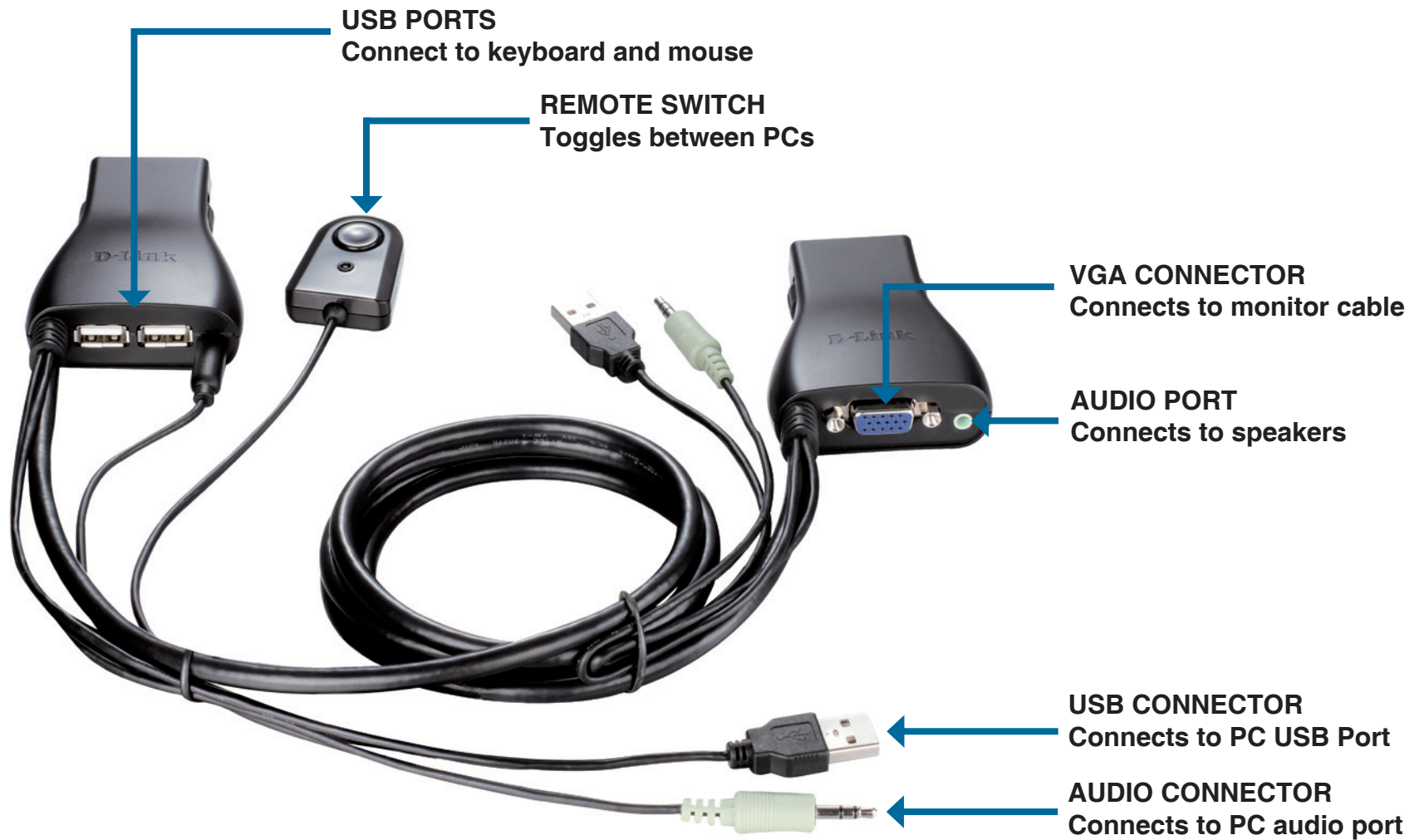
Please follow the diagram below to connect the KVM switch to your workstation computers. Speakers are optional.



**Note:**

This KVM Switch will not detect whether a computer is on or off if the “Power On” function is set in the BIOS. If you switch to a computer that is turned off, nothing will be displayed on the monitor.

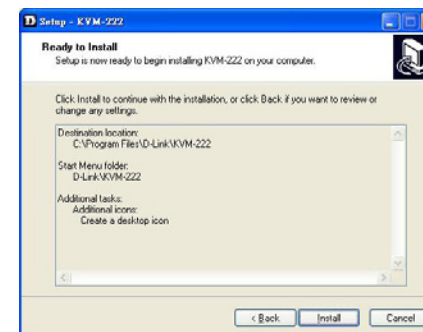
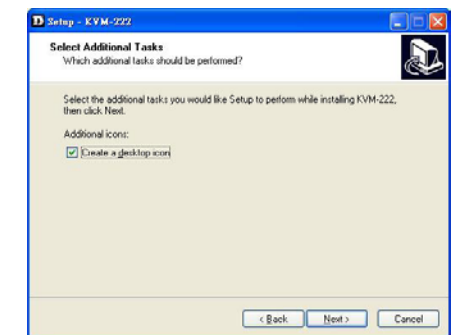
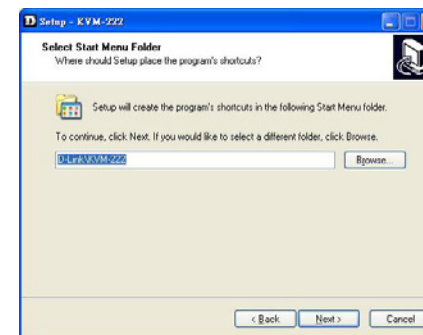
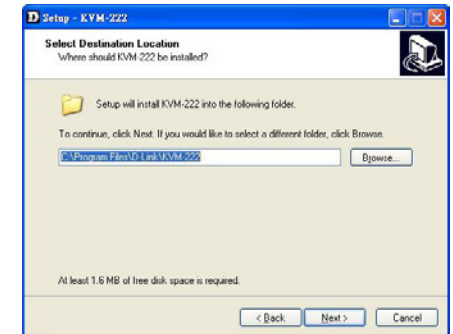
# Hardware Overview



# Windows Installation

1. Please insert the installation CD-ROM into your computers optical drive.
2. When the USB KVM setup Wizard appears, click **Next**.
3. Please follow the installation steps on the screen.
4. Click **Finish** to complete the installation and launch the KVM software.
5. When the installation is completed, a green sphere icon will appear in the taskbar area indicating the ready status of the connected computer.

Task bar area: 

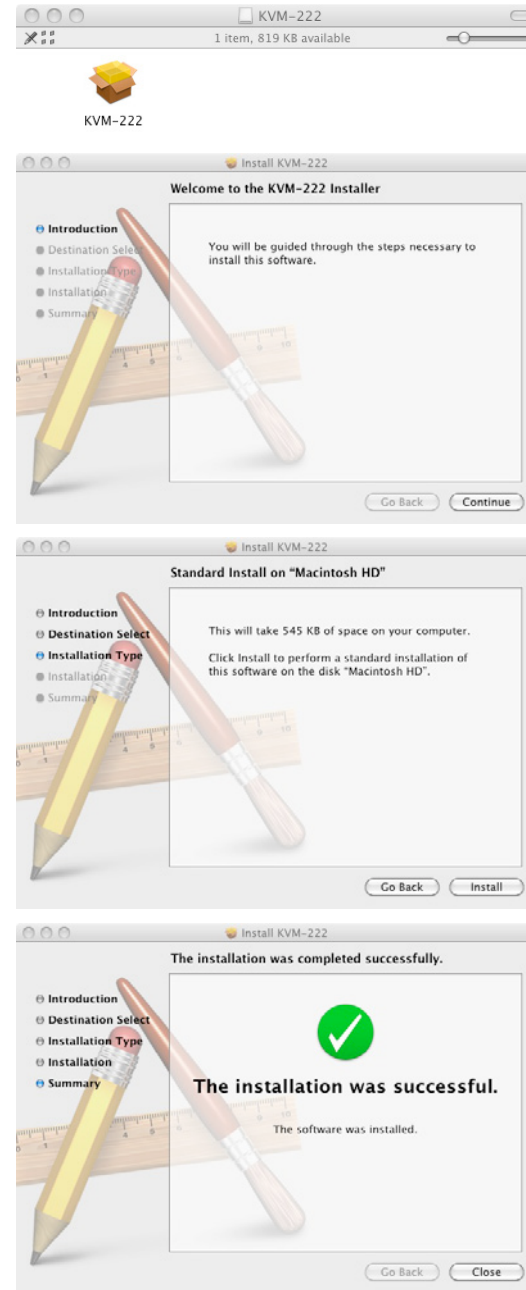




# MAC Installation

1. Please insert the installation CD-ROM into your computers optical drive and click USB KVM.pkg.dmg.
2. Please follow the installation steps on the screen.
3. Click **Close** to complete the installation and launch to the KVM software.
4. When the installation is completed, a green sphere icon will appear in the doc area indicating the ready status of the connected computer.

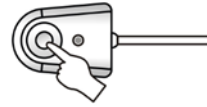
Doc Area:



# Accessing the KVM - Windows

## Remote Control Switching

Push the remote control button to switch between computers.  
The green and orange LEDs indicate the selected PC.



## Hot key Switching

Press the **Scroll Lock** key two times to switch between PCs, including audio.

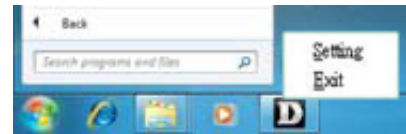
Press the **Caps Lock** key two times to switch between PCs but maintain the audio feed of the original computer.

## Software Switching

- Left-click on the taskbar icon to switch between PCs.
- You may also use a specified keyboard hotkey to switch between PCs. See the instructions below.

## Software Settings

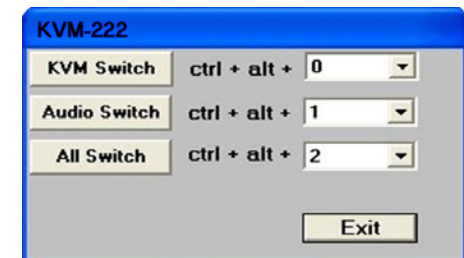
Right-click on the green taskbar icon and select **Setting**.



The following options are available:

- KVM Switch:** This hotkey will switch between PCs but maintain the audio feed of the original computer.
- Audio Switch:** This hotkey will switch the audio of the other PC, but maintain control of the original computer.
- All Switch:** This hotkey will switch between PCs, including audio.

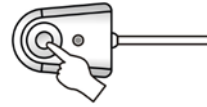
You may choose a number for each hotkey. Please choose different numbers for each setting.



# Accessing the KVM - MAC

## Remote Control Switching

Push the remote control button to switch between computers.  
The green and orange LEDs indicate the selected PC.



## Software Switching

- Click on the taskbar icon to switch between PCs.
- You may also use a specified keyboard hotkey to switch between PCs.  
See the instructions below.

## Software Settings

Click and hold on the green taskbar icon for 3 seconds and select **Setting**.



The following options are available:

- KVM Switch:** This hotkey will switch between PCs but maintain the audio feed of the original computer.
- Audio Switch:** This hotkey will switch the audio of the other PC, but maintain control of the original computer.
- All Switch:** This hotkey will switch between PCs, including audio.

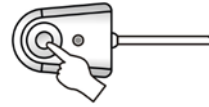
You may choose a number for each hotkey. Please choose different numbers for each setting.



# Accessing the KVM - Linux

## Remote Control Switching

Push the remote control button to switch between computers.  
The green and orange LEDs indicate the selected PC.



# Troubleshooting

**When turning the computer on, the keyboard is not detected, or a keyboard / mouse error message is displayed.**

If the computer's BIOS does not support USB boot-up, the system may be unable to detect the mouse and keyboard during startup. Please ensure that your PC BIOS supports USB boot-up, and upgrade your PC's firmware if necessary.

**The computer's BIOS is correctly configured but the computer is still unable to detect the mouse and keyboard.**

Be sure to directly connect the USB KVM switch to USB port on the PC's motherboard rather than through a port on a PCI card, Card Bus, or USB Hub.

**When switching to PC2, the computer still displays PC1.**

The KVM switch may not function correctly while a computer is powered off or still booting up. Ensure that the second PC is powered on and use the hot key or remote control button to switch between computers.

**How do I set a hot key in Mac 10.6?**

Please CTRL + click or right-click on the green taskbar icon and click on **Setting** to open the settings menu to set a hotkey.

# Technical Specifications

## Ports

- 2 x PC Port
- 2 x USB Port

## Cable Length

- KVM Cable - 1.8 m

## Port Selection

- Remote Control Button
- Hot key commands
- AP Selection

## Cable Connection (PC1 & PC2)

- PC:  
USB Type A Male
- Monitor:  
HDB - 15 Male
- Audio:  
3.5 mm Mini-Phone Stereo Jack Male (green)

## KVM Connector

- Keyboard - 1 x USB Type A Female
- Mouse - 1 x USB Type A Female
- Monitor - 1 x HDB-15 Female (Blue)
- Audio - 1 x 3.5 mm Mini-Phone Stereo Jack Female (green)
- Remote control - 1 x 2.5 mm 4 Pin Phone Jack (Female)
- Operating Voltage - 5 V DC

## Resolution

- 2048 x 1536 (QXGA)
- 1920 x 1440 (WUXGA)

## System Requirements

- Windows 2000 / XP / Vista / 7
- Linux
- Mac OS (10.3 and higher)

## Weight

- 193 g

## Dimensions (L x W x H)

- 78 x 56 x 21.5 mm