

Product Highlights

Robust Design

High EMC endurance, fanless design, and a wide operating temperature range combined with IP40 housing to withstand harsh operating environments.

Industrial Deployment

Compact, plug-and-play form factor design that supports DIN rail mounting to allow for flexible and swift deployment.

Flexible Availability

5 10/100BASE-T, 4 and 8 1GBASE-T port options are available for varying network deployments, in addition to 2 SFP uplink ports on both models for long distance connections.



DIS-100E-05, DIS-100G-06, DIS-100G-06P and DIS-100G-10 Industrial Unmanaged Switches

Key Features

Adaptable Application

- SFP ports for long distance connections
- Plug-and-play installation

Robust and High-Redundancy Design

- Fanless, passive cooling design
- Industrial grade operating temperature (-40~75°C)
- High EMS endurance
- Durable IP40-rated housing
- Dual power input for redundant power supplies
- Built-in 6 KV surge protection on copper ports

Advanced Features

- 1.5K jumbo frame for DIS-100E-05 and 9K for Gigabit models
- IEEE 802.3az Energy Efficient Ethernet
- Power saving by link status

The DIS-100E-05 Fast Ethernet and DIS-100G-06, DIS-100G-06P, DIS-100G-10 Gigabit Industrial Unmanaged Switches are equipped with a variety of port combinations including 10/100/1000BASE-T ports and SFP ports. These switches feature a robust design making them ideal for deployment in industrial and outdoor cabinet surveillance settings and capable of withstanding the harshest environments. In addition, the DIS-100E-05, DIS-100G-06, DIS-100G-06P and DIS-100G-10 are plug-and-play, allowing for effortless and swift deployment.

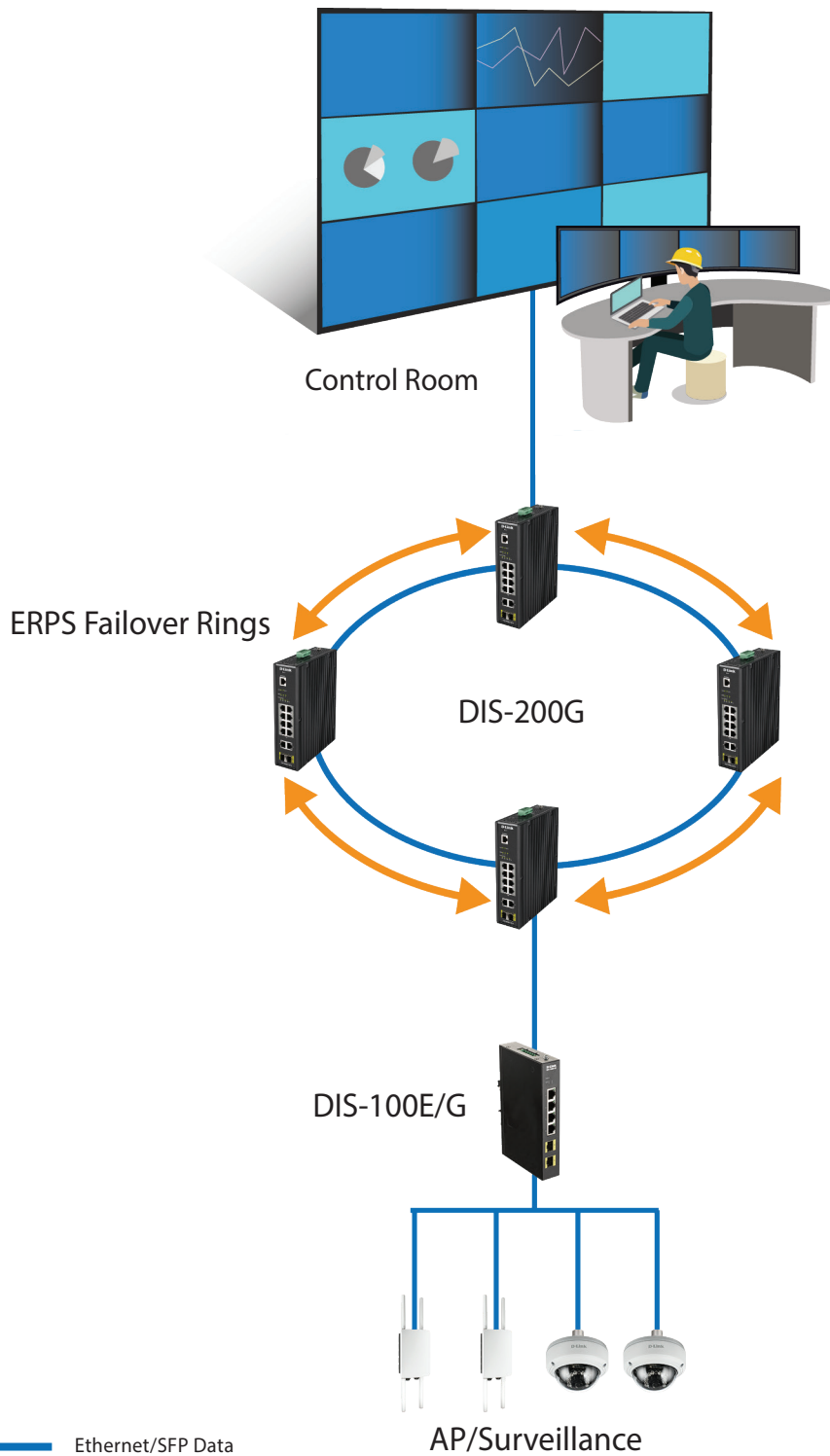
Durable, Reliable, and Efficient

The DIS-100E-05, DIS-100G-06, DIS-100G-06P and DIS-100G-10 switches are housed in a highly resistant IP40-rated metal casing to protect the switches from harsh environmental conditions. High electromagnetic susceptibility (EMS) protects the DIS-100E-05, DIS-100G-06, DIS-100G-06P and DIS-100G-10 from undesirable effects when operating in environments with strong electromagnetic interference. Meanwhile, the fanless design extends the life of the DIS-100E-05, DIS-100G-06, DIS-100G-06P and DIS-100G-10 while also enabling them to operate in a wide temperature range from -20 °C up to 75 °C. With DIN rail mounting capability, the DIS-100E-05, DIS-100G-06, DIS-100G-06P and DIS-100G-10 can fit seamlessly into your industrial equipment infrastructure. In addition, the DIS-100E-05, DIS-100G-06, DIS-100G-06P and DIS-100G-10 supports dual power input, which allows for a redundant power supply configuration to make sure the switches continue to operate in the event of a primary power supply failure.

Green Ethernet Technology

The DIS-100E-05, DIS-100G-06, DIS-100G-06P and DIS-100G-10 features green technology; IEEE 802.3az Energy-Efficient Ethernet (EEE). Energy-Efficient Ethernet reduces the power consumption of the switches when network utilization is low, effectively lowering the cost of ownership during periods of inactivity.

DIS-100E-05, DIS-100G-06, DIS-100G-06P and DIS-100G-10 Industrial Unmanaged Switches



DIS-100E-05, DIS-100G-06, DIS-100G-06P and DIS-100G-10 Industrial Unmanaged Switches

Technical Specifications				
Model Number	DIS-100E-05	DIS-100G-06	DIS-100G-06P	DIS-100G-10
Hardware Version	A1			
Interfaces	• 5 x 10/100BASE-T	• 4 x 10/100/1000BASE-T • 2 x SFP ports	• 4 x 10/100/1000BASE-T PoE • 2 x SFP ports	• 8 x 10/100/1000BASE-T • 2 x SFP ports
Port Functions	<ul style="list-style-type: none"> • IEEE 802.3 for Ethernet • IEEE 802.3u for Fast Ethernet • IEEE 802.3z for Gigabit fiber • IEEE 802.3az Energy-Efficient Ethernet (EEE) 			
Media Interface Exchange	Auto MDI/MDIX adjustment for all twisted-pair ports			
Performance				
Switching Capacity	1 Gbps	12 Gbps	12 Gbps	20 Gbps
Transmission Method	Store-and-forward			
MAC Address Table	1K	8K	8K	8K
Maximum 64 Byte Packet Forwarding Rate	0.74 Mpps	8.92 Mpps	8.92 Mpps	14.88 Mpps
Packet Buffer Memory	0.448 Mbit	4.1 Mbit	4.1 Mbit	4.1 Mbit
Flash Memory	--	16 MB	16 MB	16 MB
DRAM Size	--	128 MB	128 MB	128 MB
PoE				
PoE Standards	--	--	IEEE 802.3af/at	--
PoE Capable Ports	--	--	4	--
PoE Power Budget	--	--	• 120 W • 30 W per port	--
LEDs				
Power (per device)	√			
Link/Active/Speed (per RJ-45 port)	√			
Link/Active/Speed (per SFP port)	--	√	√	√
Physical				
Power Input	12 to 55 VDC terminal block dual input	12 to 55 VDC terminal block dual input	48 to 55 VDC terminal block dual input	12 to 55 VDC terminal block dual input
Maximum Power Consumption	Maximum: 1.45 W	Maximum: 6.3 W	Maximum: 123.2 W (w/ PoE) 6.3 W (w/o PoE)	Maximum: 6.5 W
Standby Power Consumption	Maximum: 1.03 W	Maximum: 2.49 W	Maximum: 2.49 W	Maximum: 2.85 W
Acoustics	--			
Heat Dissipation	4.95 BTU/hr	21.5 BTU/hr	420.5 BTU/hr	21.5 BTU/hr
MTBF	> 200,000 hours			

DIS-100E-05, DIS-100G-06, DIS-100G-06P and DIS-100G-10 Industrial Unmanaged Switches

Operating Temperature	-40 to 75°C (-40 to 167°F)			
Storage Temperature	-40 to 85°C (-40 to 185°C)			
Operating Humidity	5% to 95% relative humidity			
Storage Humidity	5% to 95% relative humidity			
Material	IP40-rated metal casing			
Installation	DIN rail			
Dimensions (L x W x H)	100 x 76.5 x 30 mm (3.94 x 3.01 x 1.18 in)	138 x 108 x 44 mm (5.43 x 4.25 x 1.73 in)	138 x 108 x 44 mm (5.43 x 4.25 x 1.73 in)	165 x 108 x 44 mm (6.50 x 4.25 x 1.73 in)
Weight	0.27 kg (0.60 lbs)	0.61 kg (1.34 lbs)	0.63 kg (1.39 lbs)	0.62 kg (1.36 lbs)

Certifications

Safety	cUL, CB, CE, BSMI			
EMI	CE Class A, VCCI Class A, FCC Class A, IC, BSMI, RCM			

Order Information

DIS-100E-05	5 Ports 10/100Mbps Industrial Unmanaged Switch, DIN
DIS-100G-06	4 Ports 1G + 2 Ports 1G SFP Industrial Unmanaged Switch, DIN
DIS-100G-06P	4 Ports 1G PoE+ + 2 Ports 1G SFP Industrial Unmanaged Switch, 120W, DIN
DIS-100G-10	8 Ports 1G + 2 Ports 1G SFP Industrial Unmanaged Switch, DIN

Optional SFP+ Transceivers

DIS-S301SX	1000BASE-SX, multi-mode, 550 m
DIS-S302SX	1000BASE-SX, multi-mode, 2 km
DIS-S310LX	1000BASE-LX, single-mode, 10 km
DIS-S330EX	1000BASE-EX, single-mode, 30 km
DIS-S350LHX	1000BASE-LHX, single-mode, 50 km
DIS-S380ZX	1000BASE-ZX, single-mode, 80 km