

D-Link XTREME N™ WIRELESS ROUTER

- Install Router
- View Manual
- Extras
- Adobe Reader
- Support
- Registration



← Exit DIR-655

D-Link Quick Router Setup

D-Link Quick Router Setup

DIR-655 setup

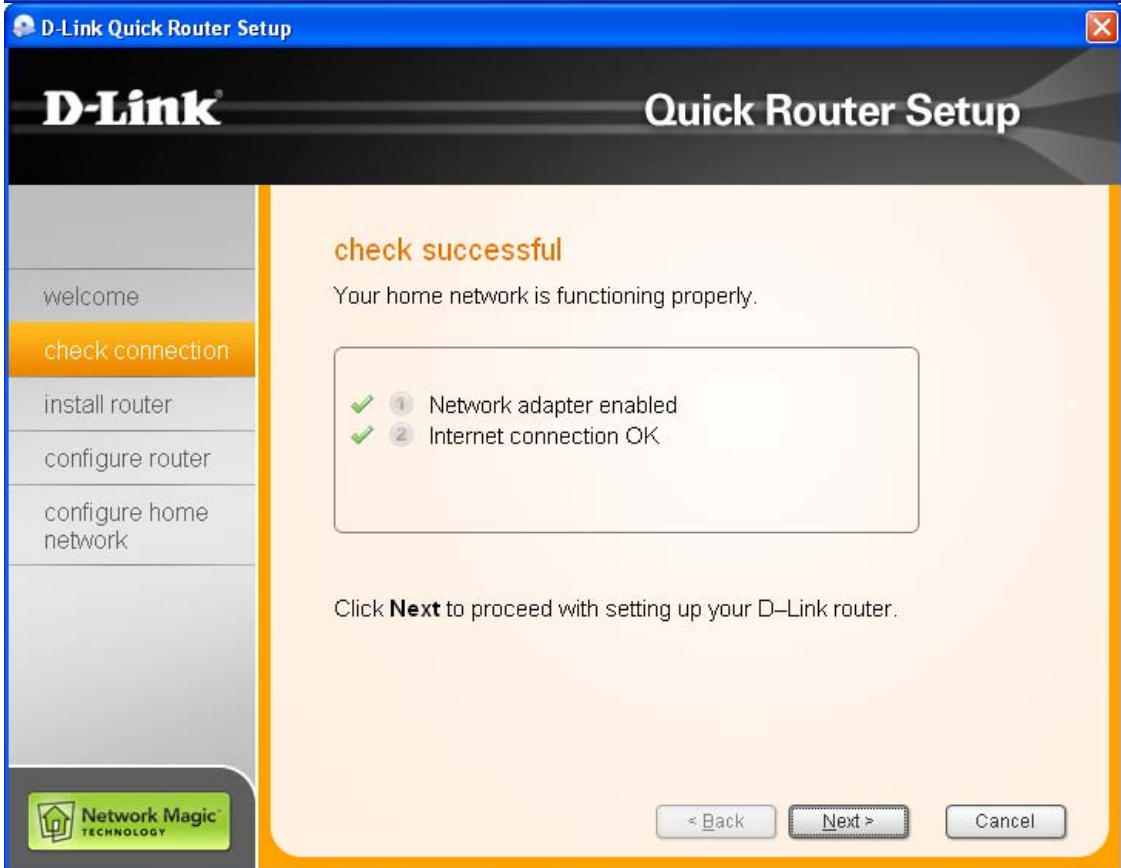


Choose your language:

This wizard will guide you through the setup of your new router. It will also provide you with a trial version of **Network Magic**, the best software for getting the most out of your home network.

This will take about 10 minutes.
To begin click **Next**.

 Network Magic TECHNOLOGY



D-Link Quick Router Setup

D-Link Quick Router Setup

- welcome
- check connection
- install router
- configure router
- configure home network

gathering information

Quick Router Setup has discovered that you are already connected to a router. Many people choose to replace an existing router with their new D-Link router.

Are you replacing an existing router?

yes
 no

click **Next** to continue.

Network Magic TECHNOLOGY

< Back Next > Cancel

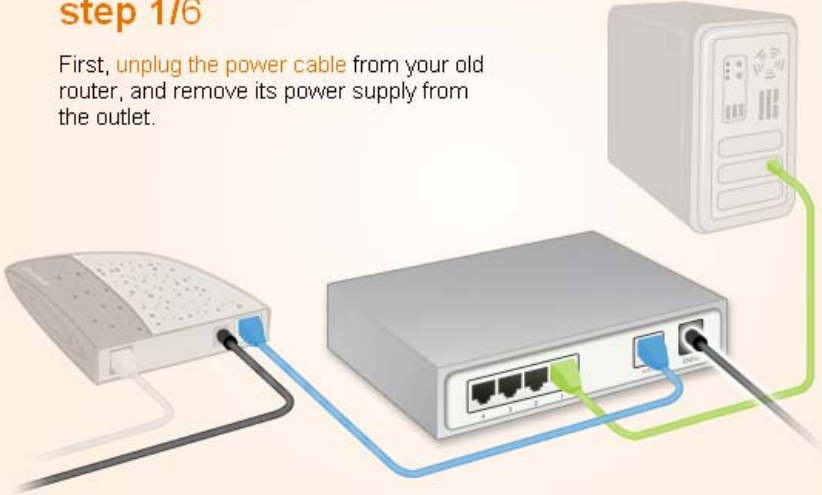
D-Link Quick Router Setup

D-Link Quick Router Setup

- welcome
- check connection
- install router
- configure router
- configure home network

step 1/6

First, **unplug the power cable** from your old router, and remove its power supply from the outlet.



Network Magic TECHNOLOGY


< Back Next > Cancel

D-Link Quick Router Setup

D-Link Quick Router Setup

step 2/6

Next, **turn off or unplug** power to your cable or DSL modem.



Network Magic TECHNOLOGY

welcome

check connection

install router

configure router

configure home network

D-Link Quick Router Setup

D-Link Quick Router Setup

step 3/6

Disconnect the **ethernet cable** from the port labeled **"WAN"** or **"Internet"** on the back of your old router.

Plug this into the **grey port** labeled **"WAN"** or **"Internet"** on your new D-Link router.



Network Magic TECHNOLOGY

welcome

check connection

install router

configure router

configure home network

D-Link Quick Router Setup

D-Link Quick Router Setup

step 4/6

Disconnect all remaining **ethernet cables** from the back of your old router, and plug them into the **blue ports** on your new router.



Network Magic TECHNOLOGY

D-Link Quick Router Setup

D-Link Quick Router Setup

step 5/6

Reconnect the **power** supply to your cable or DSL modem.

Wait **30 seconds** for the modem to startup before continuing.



Network Magic TECHNOLOGY

D-Link Quick Router Setup

D-Link Quick Router Setup

step 6/6

Now connect the **included power supply** from an available outlet to your new D-Link router.



Network Magic TECHNOLOGY

< Back Next > Cancel

D-Link Quick Router Setup

D-Link Quick Router Setup

check router

That completes the wiring, Quick Router Setup will now check your router's configuration...

- ✓ ① Network available
- ✓ ② Network restarted
- ✓ ③ Firmware ok
- ④ Checking for router conflicts...

██████████

During this process you may see several Windows warnings saying *A network cable is unplugged*. Please ignore them.

Network Magic TECHNOLOGY

Retry Next > Cancel

D-Link Quick Router Setup

D-Link Quick Router Setup

set up your wireless network

Give your network a name (SSID):
For example "Smith Family Network"

Network Magic TECHNOLOGY

< Back Next > Cancel


D-Link Quick Router Setup

D-Link Quick Router Setup

confirm wireless settings

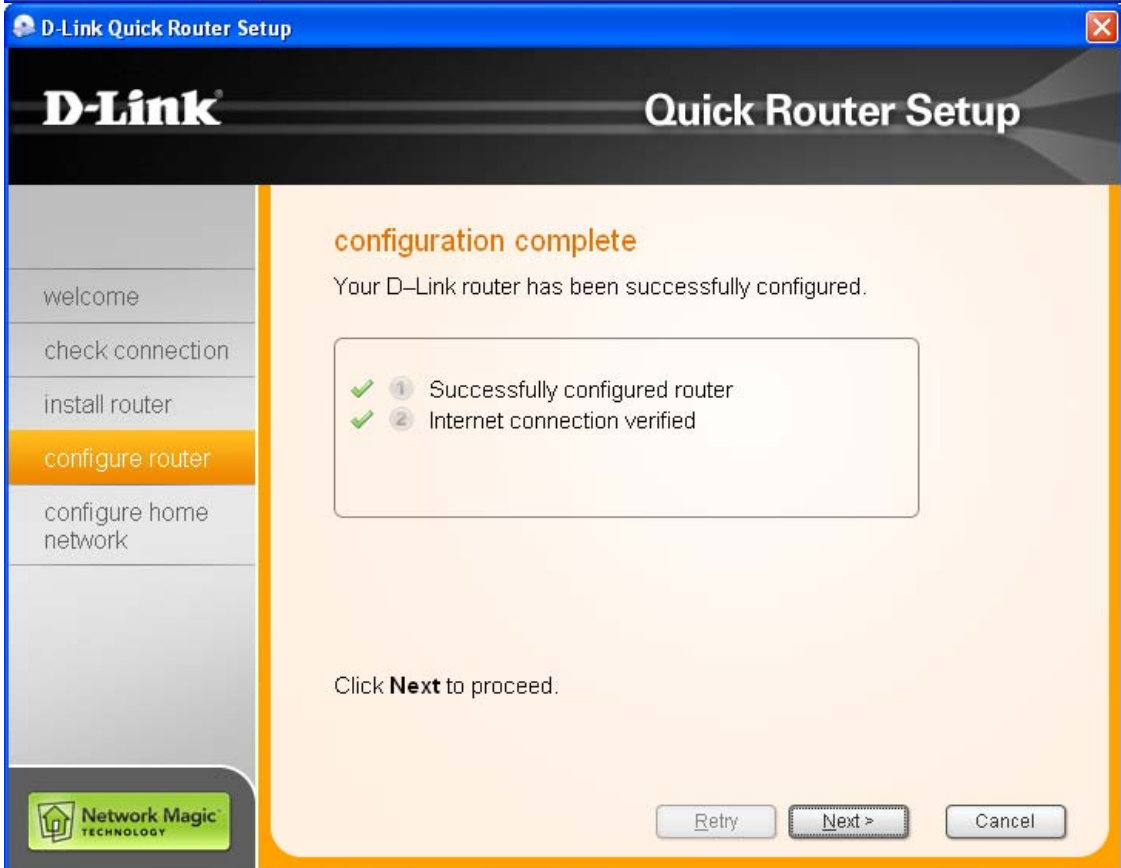
network name (SSID): **DLINK**

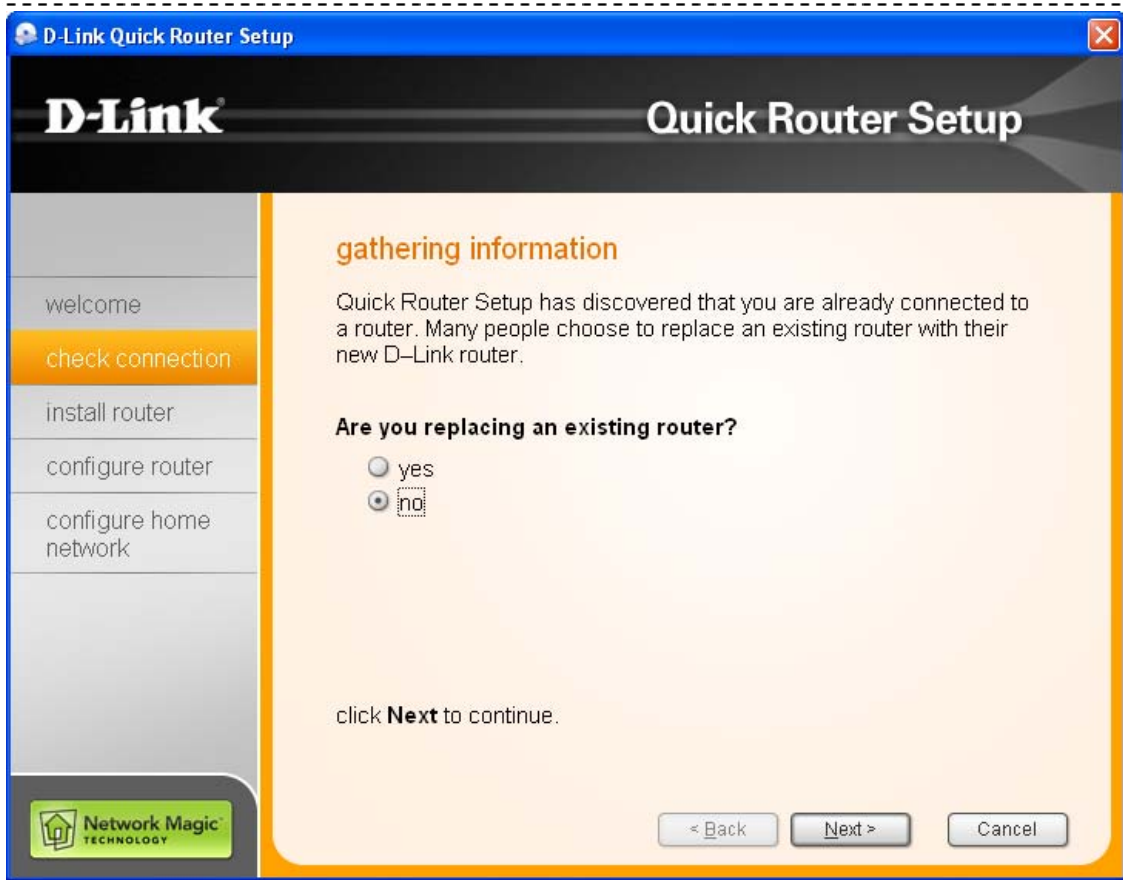
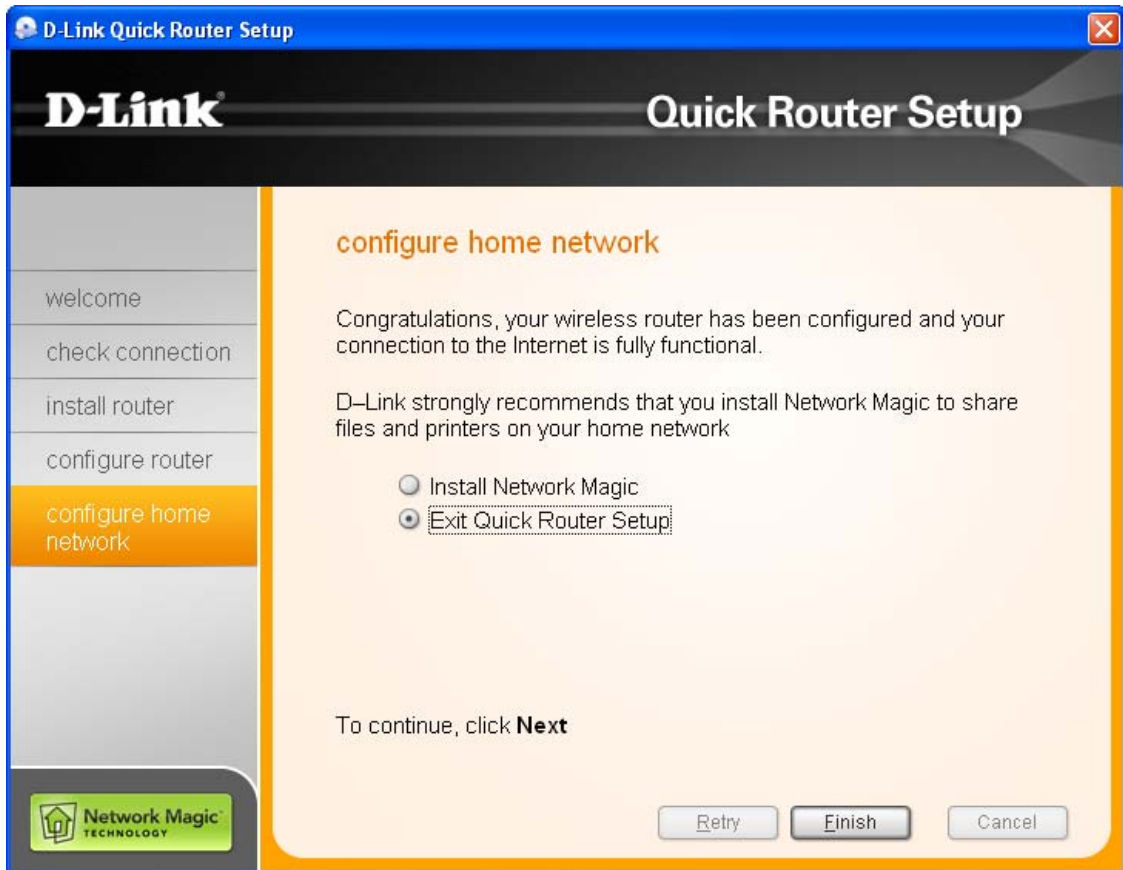
Write these settings down in the space provided on the setup CD sleeve. This network name must be entered on every computer that you wish to connect wirelessly to your network.



Network Magic TECHNOLOGY

< Back Next > Cancel





D-Link Quick Router Setup

D-Link Quick Router Setup

step 1/5

First **turn off or unplug** power to your cable or DSL modem.



Network Magic TECHNOLOGY


< Back Next > Cancel

D-Link Quick Router Setup

D-Link Quick Router Setup

step 2/5

Now unplug the existing ethernet cable from your cable or DSL modem and plug it into **blue port number 1** on your new D-Link router.



Network Magic TECHNOLOGY

< Back Next > Cancel

D-Link Quick Router Setup

D-Link Quick Router Setup

welcome

check connection

install router

configure router

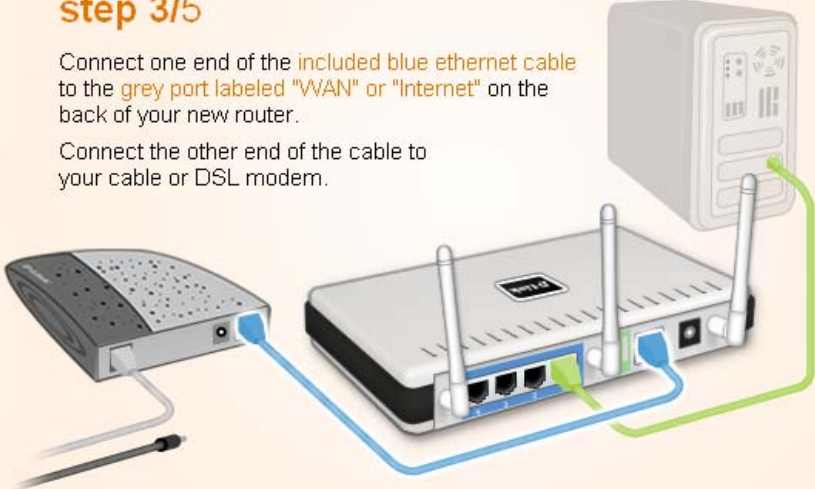
configure home network

Network Magic TECHNOLOGY

step 3/5

Connect one end of the included blue ethernet cable to the grey port labeled "WAN" or "Internet" on the back of your new router.

Connect the other end of the cable to your cable or DSL modem.



< Back Next > Cancel

D-Link Quick Router Setup

D-Link Quick Router Setup

welcome

check connection

install router

configure router

configure home network

Network Magic TECHNOLOGY

step 4/5

Reconnect the power supply to your cable or DSL modem.

Wait 30 seconds for the modem to startup before continuing.



< Back Next > Cancel

D-Link Quick Router Setup

D-Link Quick Router Setup

step 5/5

Now connect the **included power supply** from an available outlet to your new D-Link router.



< Back Next > Cancel

Network Magic TECHNOLOGY

D-Link Quick Router Setup

D-Link Quick Router Setup

check router

That completes the wiring, Quick Router Setup will now check your router's configuration...

- ✓ ① Network available
- ✓ ② Network restarted
- ✓ ③ Firmware ok
- ④ Checking for router conflicts...

██████████

During this process you may see several Windows warnings saying *A network cable is unplugged*. Please ignore them.

Retry Next > Cancel

Network Magic TECHNOLOGY

D-Link Quick Router Setup

D-Link Quick Router Setup

set up your wireless network

Give your network a name (SSID):
For example "Smith Family Network"

< Back Next > Cancel

Network Magic TECHNOLOGY

welcome
check connection
install router
configure router
configure home network

D-Link Quick Router Setup

D-Link Quick Router Setup

confirm wireless settings

network name (SSID): **DLink**

Write these settings down in the space provided on the setup CD sleeve. This network name must be entered on every computer that you wish to connect wirelessly to your network.



< Back Next > Cancel

Network Magic TECHNOLOGY

welcome
check connection
install router
configure router
configure home network

