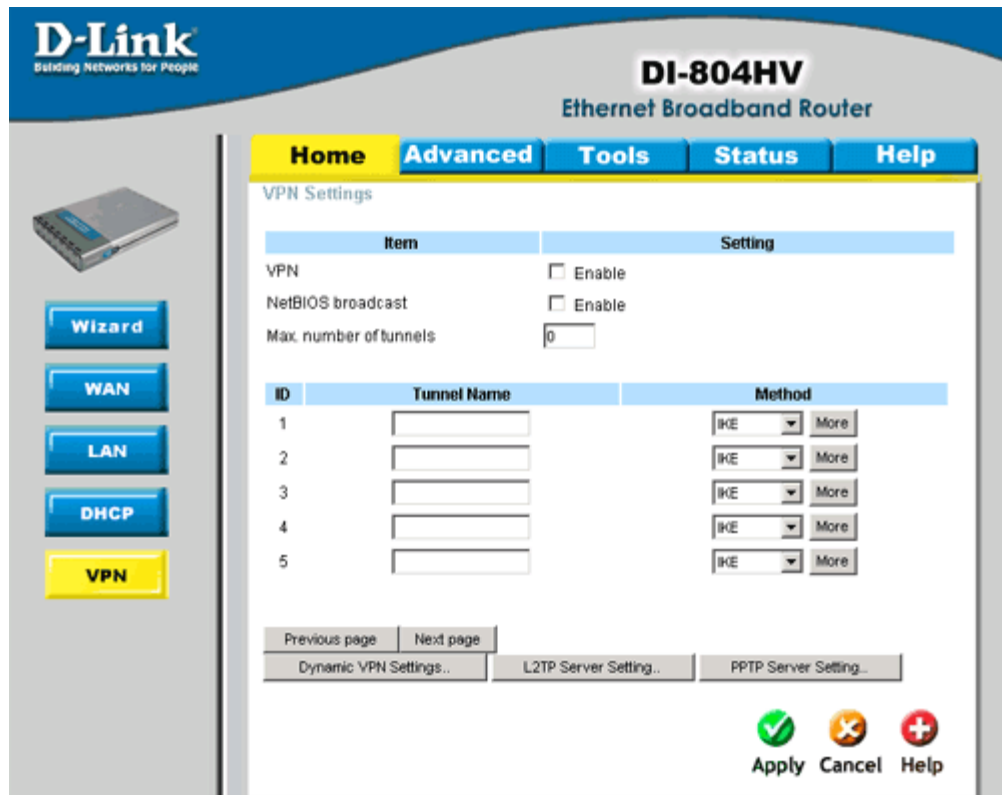


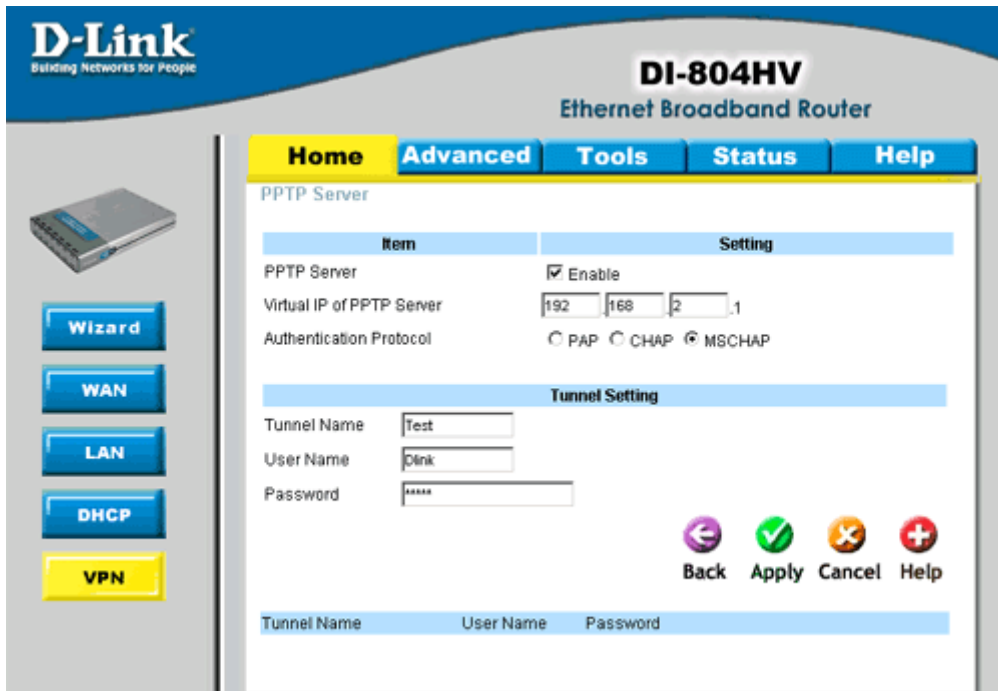
How do I configure the PPTP Server on my DI-804HV or DI-808HV so I can VPN using Network and Dial-up Connections on a WinXP or Win2k machine?

Step 1 Login to the router. Open your web browser and type in the IP address of the router (192.168.0.1). Enter the username (admin) and password (blank by default), and then click **OK**.

Step 2 Click on **VPN** and then click **PPTP Server Setting**.



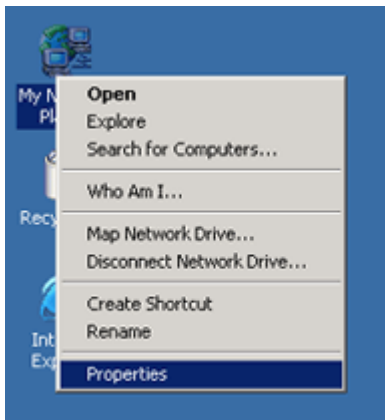
Step 3 Check the box to **Enable** PPTP server. Insert the Virtual IP of the PPTP Server (IE 192.168.2.1). This must be different from the LAN IP Address. Select the **Authentication Protocol** by selecting the appropriate radio button. Name your tunnel and insert a **User Name** and **Password** for your PPTP client.



Step 4 Click the **Apply** button to save your changes.

To configure your Win2k/WinXP client follow the steps below:

Step 1 Right-click **My Network Places** and select **Properties**.



Step 2 Create a **New Connection**.

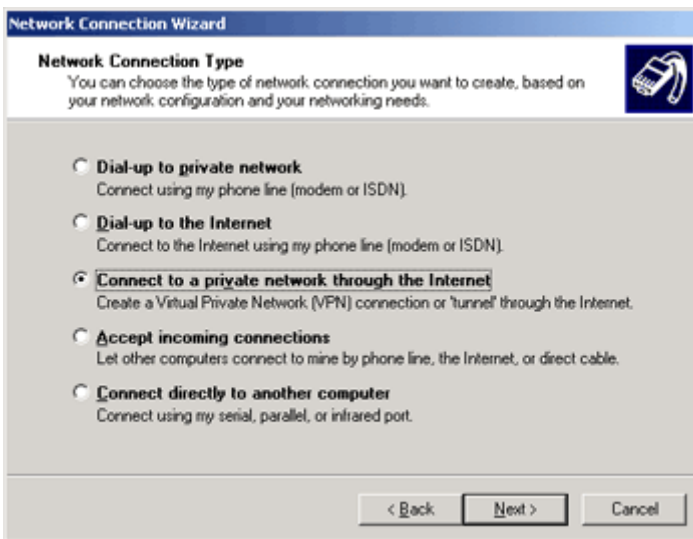
D-Link Africa Setup Guide Document.



Step 3 The Network Wizard will appear. Click on **Next** to continue.

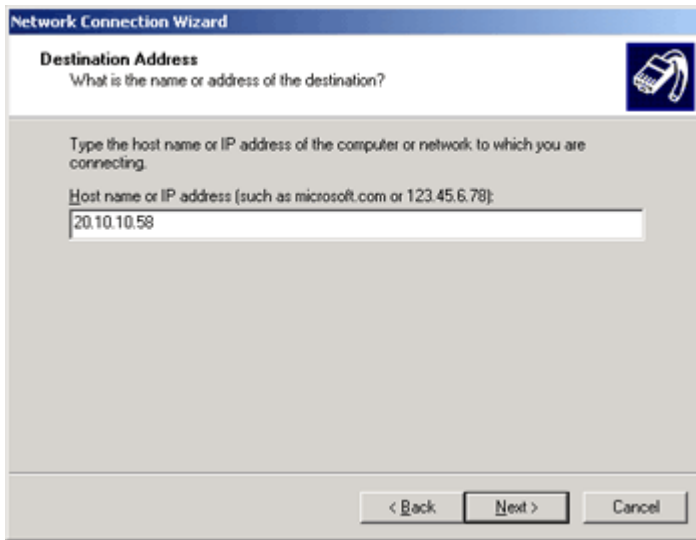


Step 4 Choose your **Network Connection Type** (You will be connecting to a private network). Click **Next**.



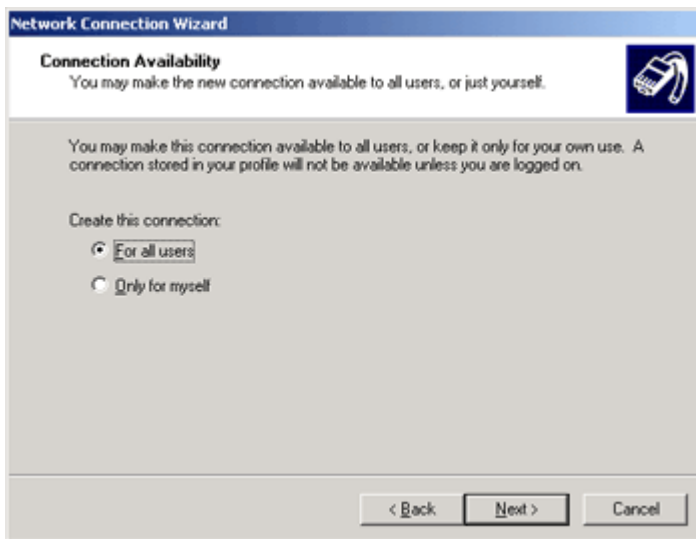
D-Link Africa Setup Guide Document.

Step 5 Enter the **Destination Address**. This will be your public IP address found on the **Status** tab of the DI-804HV.



The screenshot shows the 'Network Connection Wizard' window. The title bar reads 'Network Connection Wizard'. The main heading is 'Destination Address' with a sub-heading 'What is the name or address of the destination?'. Below this, there is a text box containing '20.10.10.58'. The text above the text box says 'Type the host name or IP address of the computer or network to which you are connecting. Host name or IP address (such as microsoft.com or 123.45.6.78):'. At the bottom of the window, there are three buttons: '< Back', 'Next >', and 'Cancel'.

Step 6 Select **All Users** for the **Connection Availability** and click **Next**.



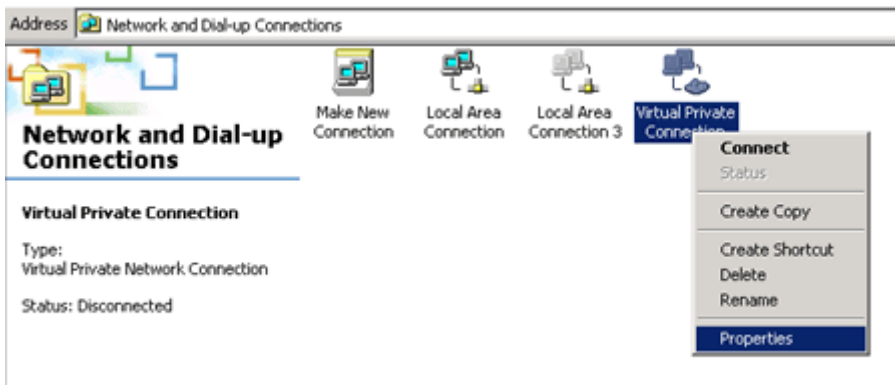
The screenshot shows the 'Network Connection Wizard' window. The title bar reads 'Network Connection Wizard'. The main heading is 'Connection Availability' with a sub-heading 'You may make the new connection available to all users, or just yourself.'. Below this, there is a text box containing '20.10.10.58'. The text above the text box says 'Type the host name or IP address of the computer or network to which you are connecting. Host name or IP address (such as microsoft.com or 123.45.6.78):'. At the bottom of the window, there are three buttons: '< Back', 'Next >', and 'Cancel'.

Step 7 Add a shortcut to your desktop and click on **Finish**.

D-Link Africa Setup Guide Document.

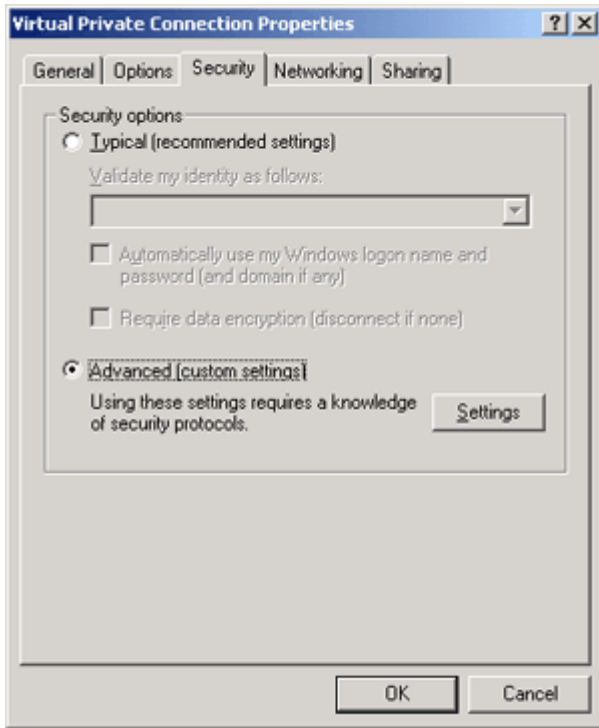


Step 8 Right-click the **Virtual Private Connection** and go to **Properties**.



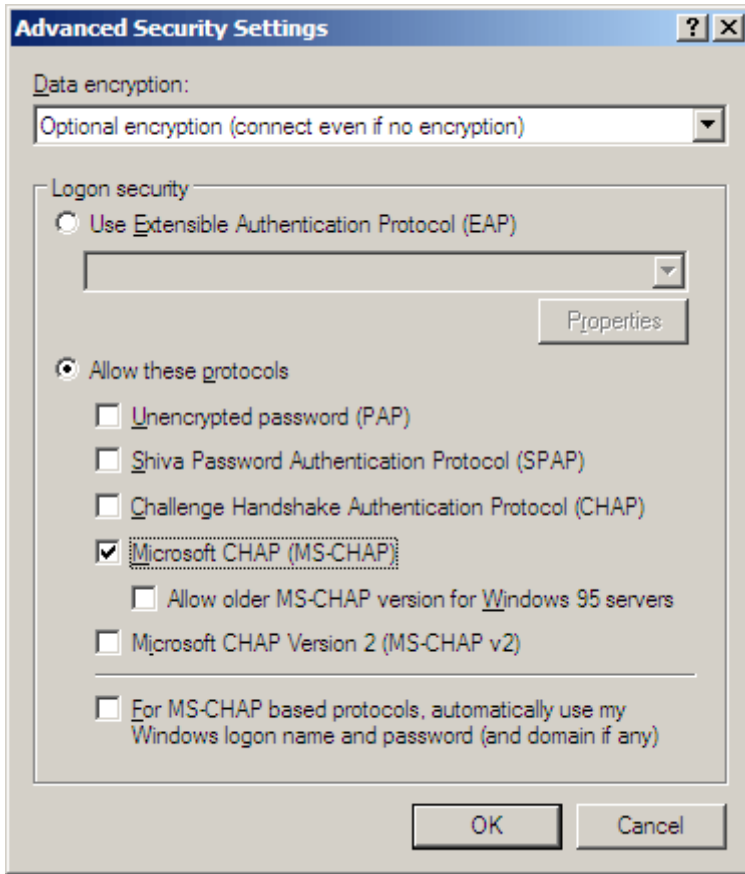
Step 9 Click on the **Security** tab. Select the **Advanced** radio button and then click on **Settings**.

D-Link Africa Setup Guide Document.

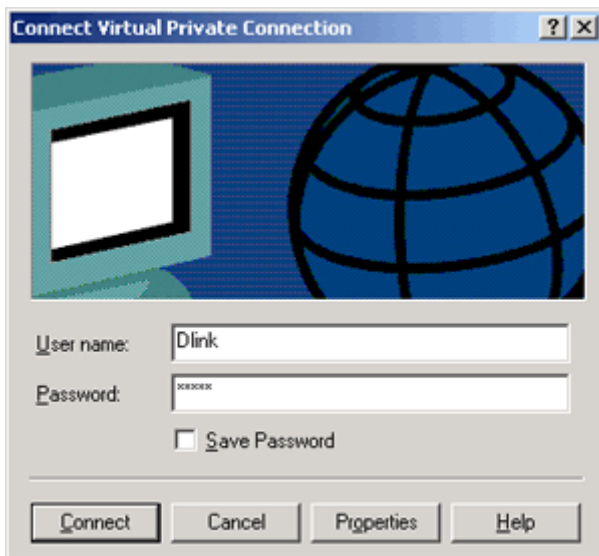


Step 10 Select **Optional encryption** from the Data encryption drop down menu. Select the **Authentication Protocol** by checking the appropriate box and click **OK** (In this case we will select MS-CHAP).

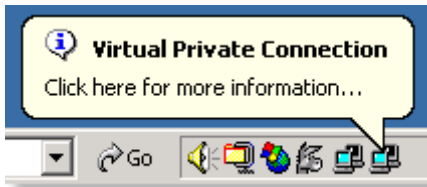
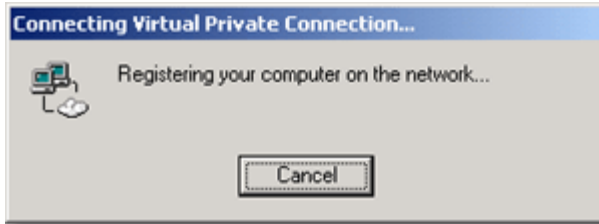
D-Link Africa Setup Guide Document.



Step 11 Enter your **Username** and **Password** to connect to the virtual private connection. Click the **Connect** button to authenticate to the DI-804HV. You will see a balloon pop-up indicating that you have connection.



D-Link Africa Setup Guide Document.



Step 12 You should now be connected. To test your connection, go to the command prompt and ping an existing IP Address behind the DI-804HV.

```
C:\WINNT\system32\CMD.EXE
Microsoft Windows 2000 [Version 5.00.2195]
(C) Copyright 1985-2000 Microsoft Corp.

C:\>ipconfig

Windows 2000 IP Configuration

Ethernet adapter Local Area Connection:

    Connection-specific DNS Suffix  . : 
    IP Address. . . . .                : 20.10.10.59
    Subnet Mask . . . . .              : 255.255.255.0
    Default Gateway . . . . .          : 20.10.10.100

PPP adapter Virtual Private Connection:

    Connection-specific DNS Suffix  . : 
    IP Address. . . . .                : 192.168.2.3
    Subnet Mask . . . . .              : 255.255.255.255
    Default Gateway . . . . .          : 192.168.2.3

C:\>ping 192.168.0.1

Pinging 192.168.0.1 with 32 bytes of data:

Reply from 192.168.0.1: bytes=32 time=21ms TTL=128
Reply from 192.168.0.1: bytes=32 time<10ms TTL=128
Reply from 192.168.0.1: bytes=32 time<10ms TTL=128
Reply from 192.168.0.1: bytes=32 time<10ms TTL=128

Ping statistics for 192.168.0.1:
    Packets: Sent = 4, Received = 4, Lost = 0 (0% loss),
    Approximate round trip times in milli-seconds:
        Minimum = 0ms, Maximum = 21ms, Average = 5ms

C:\>_
```