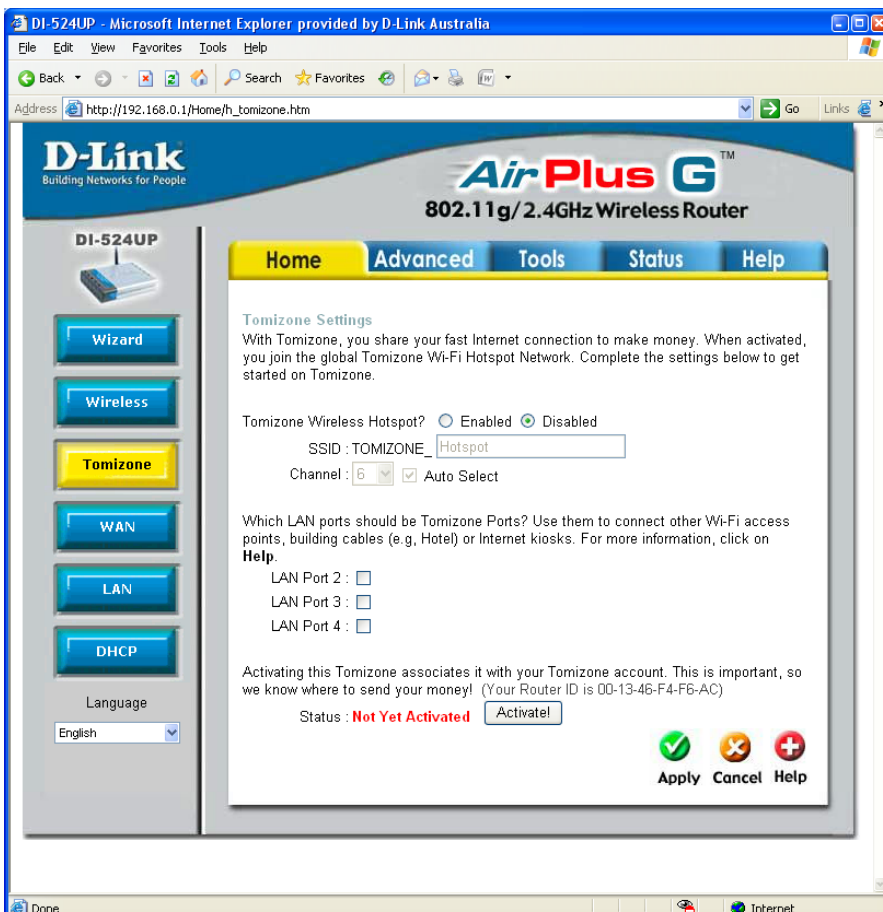
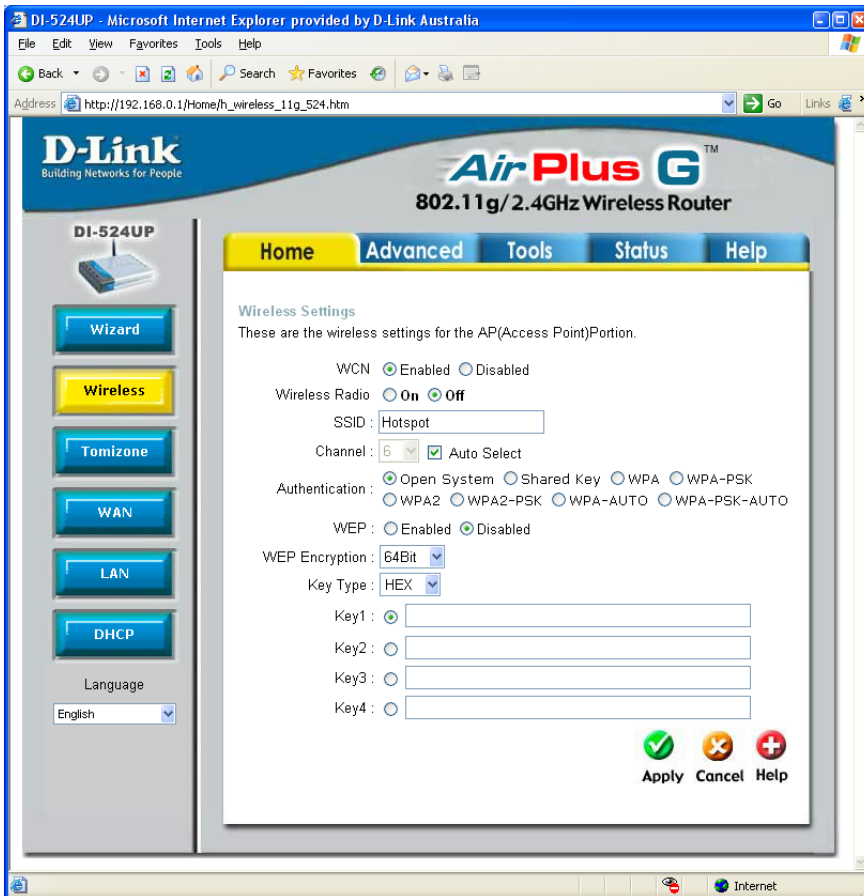


Firmware 1.03 with Tomizone feature.

All the product menus are the same except there is Tomizone menu on the left of the Home tab.

After the Tomizone feature is enabled the SSID changes from Hotspot to TOMIZONE_Hotspot.



After enabling Tomizone:

The screenshot shows the configuration page for the D-Link DI-524UP router, specifically the 'Wireless Settings' section. The browser address bar shows 'http://192.168.0.1/Home/h_wireless_11g_524.htm'. The page features a navigation menu with 'Home', 'Advanced', 'Tools', 'Status', and 'Help'. The 'Wireless Settings' section includes the following options:

- WCN: Enabled Disabled
- Wireless Radio: On Off
- SSID: TOMIZONE_Hotspot
- Channel: 6 (with Auto Select)
- Authentication: Open System Shared Key WPA WPA-PSK WPA2 WPA2-PSK WPA-AUTO WPA-PSK-AUTO
- WEP: Enabled Disabled
- WEP Encryption: 64Bit
- Key Type: HEX
- Key1:
- Key2:
- Key3:
- Key4:

At the bottom right, there are three buttons: 'Apply' (with a green checkmark icon), 'Cancel' (with a red X icon), and 'Help' (with a red plus icon).

The screenshot shows the configuration page for the D-Link DI-524UP router, specifically the 'Tomizone Settings' section. The browser address bar shows 'http://192.168.0.1/Home/h_tomizone.htm'. The page features a navigation menu with 'Home', 'Advanced', 'Tools', 'Status', and 'Help'. The 'Tomizone Settings' section includes the following options:

- Tomizone Wireless Hotspot? Enabled Disabled
- SSID: TOMIZONE_Hotspot
- Channel: 6 (with Auto Select)

Below this, there is a section titled 'Which LAN ports should be Tomizone Ports? Use them to connect other Wi-Fi access points, building cables (e.g. Hotel) or Internet kiosks. For more information, click on **Help**.' with three checkboxes:

- LAN Port 2:
- LAN Port 3:
- LAN Port 4:


At the bottom, there is a status indicator: 'Status: **Not Yet Activated**' and an 'Activate!' button. At the bottom right, there are three buttons: 'Apply' (with a green checkmark icon), 'Cancel' (with a red X icon), and 'Help' (with a red plus icon).

DI-524UP - Microsoft Internet Explorer provided by D-Link Australia


File Edit View Favorites Tools Help

Back Search Favorites Go Links

Address http://192.168.0.1/Status/st_devic.htm



Building Networks for People



802.11g/2.4GHz Wireless Router

DI-524UP

Device Info Log Statistics Wireless Info Printer Info Active Session

Language English

Home **Advanced** **Tools** **Status** Help

Device Information **System Up Time: 0 days, 00:02:41**
Firmware Version: v1.03-tomi_v1.3, Thu Jun 7 21:19:27 NZST 2007

LAN

MAC Address 00:13:46:F4:F6:AC
IP Address 192.168.0.1
Subnet Mask 255.255.255.0
DHCP Server Enabled

WAN

MAC Address 00:13:46:F4:F6:AD
Connection DHCP Client Disconnected
DHCP Release DHCP Renew
IP Address 0.0.0.0
Subnet Mask 0.0.0.0
Default Gateway 0.0.0.0
DNS 0.0.0.0 0.0.0.0

Wireless 802.11g

MAC Address 00:13:46:F4:F6:AC
SSID TOMIZONE_Hotspot
Channel 6
Encryption Disabled

Done Internet