

# QUICK INSTALL GUIDE

DHP-300

VERSION 1.2



**D-Link**<sup>®</sup>

**POWERLINE HD**

---

# System Requirements

- Windows® Vista™, XP SP2 or 2000 SP4
- 233MHz processor and at least 64MB of RAM
- An available Ethernet Adapter (100MBit/s)

## Package Contents



DHP-300  
Powerline HD Ethernet Adapter



CD-ROM with Manual and  
Installation Wizard



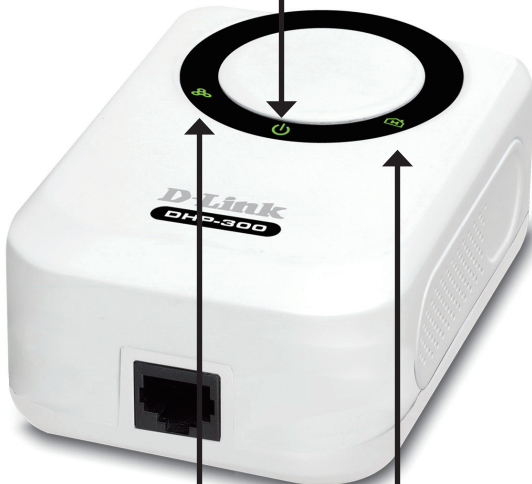
CAT5 Ethernet Cable

*If any of the above items are missing, please contact your reseller.*

# Hardware Overview

## Power LED

A solid light indicates that the device is receiving power.



## Ethernet LED

A solid light indicates a connection on the Ethernet port. The LED blinks during data transmission.

## Powerline LED

A solid light indicates that the device has detected another Powerline device on the network.



**Ethernet**

Connect CAT5 Ethernet cable to the DHP-300 Ethernet port.

# Hardware Installation

## Power

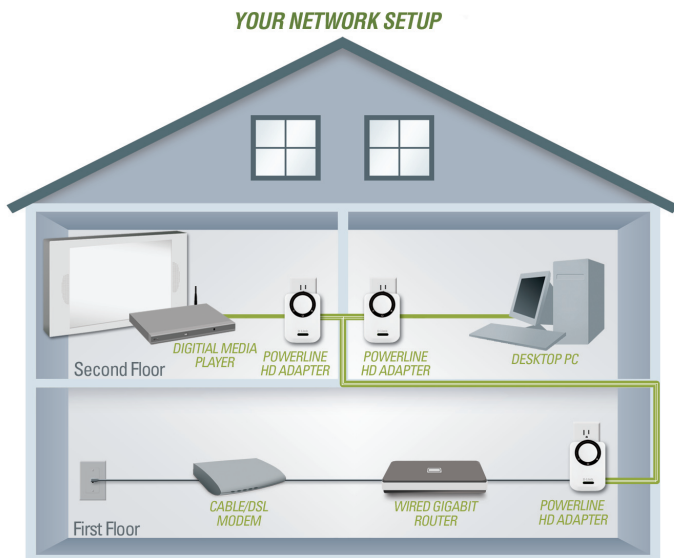
Plug the DHP-300 into an AC wall outlet or power strip.

**Note:** Power source is confirmed when the green LED Power Indicator on the DHP-300 is illuminated.

## Connect the Ethernet Cable

Connect the included Ethernet cable to the network cable connector located on the DHP-300 and attach the other end of the Ethernet cable to the network or PC.

**Note:** Network Connectivity is confirmed when the green Powerline LED indicator on the DHP-300 is illuminated.

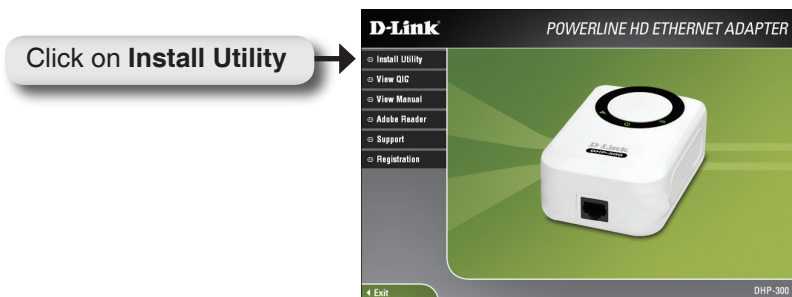


# Software Installation

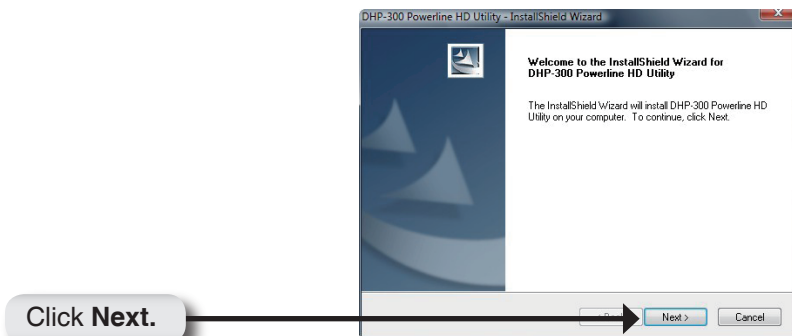
Follow the simple steps below to run the Setup Wizard to guide you quickly through the installation process.

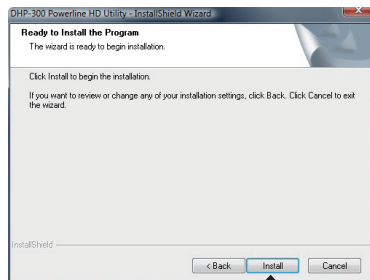
Insert the **D-Link DHP-300 Powerline HD Ethernet Adapter** CD into your CD-ROM drive. If the CD Autorun function does not automatically start on your computer, click **Start > Run**.

In the Run command box type **"D:\DHP300.exe"**, where D: represents the drive letter of your CD-ROM. If it does start, proceed to the next screen.

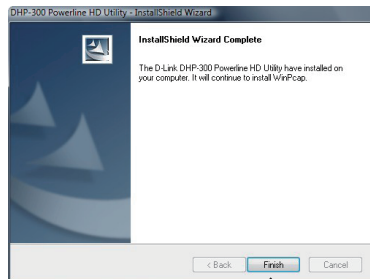


The InstallShield Wizard will begin the DHP-300 software installation.





Click **Install**



Click **Finish**

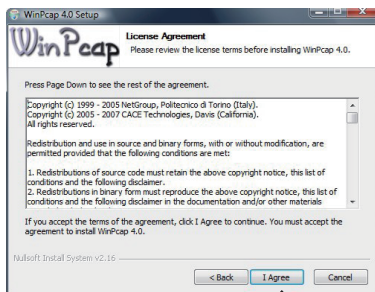
The WinPcap 4.0 installation is necessary to run the DHP-300 Utility, click **Next** to continue with the installation.



Click **Next**

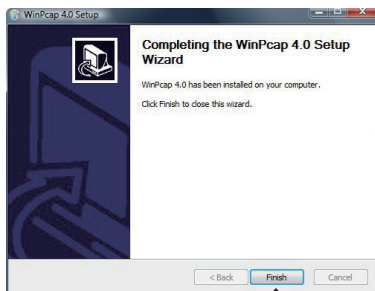


Click **Next**



Click **I Agree**

The WinPcap 4.0 Installation is complete. Click **Finish** to close the wizard.



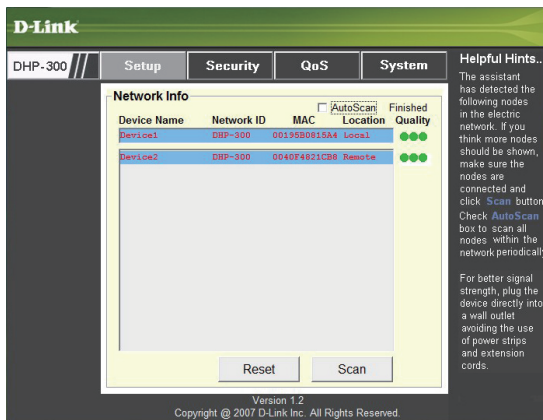
Click **Finish**



# Configuration

After you have completed the D-Link DHP-300 Utility installation wizard, double-click the *D-Link DHP-300 Powerline HD Utility* icon on your desktop to start the configuration of the DHP-300.

Double-click the **D-Link DHP-300 Powerline HD Utility** icon.



The utility provides you with the option of setting your own unique Network ID and the ability to prioritize traffic passing through the network. The color of text on the **Device Name**, **Network ID**, **MAC**, and **Location** columns represent the status of powerline network.

- **Green text** - Powerline network is encrypted with non-default Network ID.
- **Red text** - Powerline network is encrypted with default Network ID.
- **Grey text** - Powerline network is not connected due to different Network ID.

Red text on the **Device Name**, **Network ID**, **MAC** & **Location** columns mean that the powerline network is encrypted with the default Network ID (DHP-300). Follow the steps below to encrypt the network with a non-default Network ID:

- Single-click on the nodes that you want to change.
- Once all the nodes you want to encrypt with a non-default Network ID, click the **Security** Page.
- Change to a different Network ID.
- Press **Save Settings**

The screenshot shows the D-Link web interface for the DHP-300 powerline network. The top navigation bar includes 'DHP-300', 'Setup', 'Security' (which is the active tab), 'QoS', and 'System'. The main content area is titled 'Multiple PLC nodes configuration' and features a 'Network ID:' label above two input fields: 'DHP-300' and 'Use Default', separated by the word 'or'. Below this, a note states: '\* Each PLC node in the network must use the same Network ID.' A 'Save Settings' button is located at the bottom of the configuration area. On the right side, a 'Helpful Hints...' section provides instructions: 'This section allow user to configure several PLC nodes simultaneously. Complete the information for selected PLC nodes and then click [Save Settings](#) button. It's recommended to create your own Network ID for network security purpose. The Network ID allows you to protect your network from unauthorized access via the Powerline network.'

D-Link

DHP-300 // Setup Security QoS System

Multiple PLC nodes configuration

Network ID:

DHP-300 or Use Default

\* Each PLC node in the network must use the same Network ID.

Save Settings

Helpful Hints...  
This section allow user to configure several PLC nodes simultaneously.  
Complete the information for selected PLC nodes and then click [Save Settings](#) button.  
It's recommended to create your own Network ID for network security purpose.  
The Network ID allows you to protect your network from unauthorized access via the Powerline network.

Version 1.2  
Copyright © 2007 D-Link Inc. All Rights Reserved.

The screenshot on page 9 displays the current configuration of the DHP-300.

**Device Name:** Show name of devices that have been discovered. Default is Device 1, Device 2 etc (Max 16 characters, 0-9, A-Z, case sensitive) ie. Living room, Bedroom, etc.

**Network ID:** Powerline Network Name (Max 10 characters, 0-9, A-Z, case sensitive). The default ID is **DHP-300**.

**MAC:** MAC Address of detected node.

**Location:** Local or Remote nodes.

**Quality:** Network connection quality of the connected node.

- **Three circles** - Best powerline connection. Suitable for HD video stream connection.
- **Two circles** - Better powerline connection. Suitable for SD video stream connection.
- **One circle** - Good powerline connection. Suitable for data and Internet activity connection.

**Scan:** Scan the powerline network for PLC nodes. Check the **AutoScan** box to scan the network periodically.