



**Firmware Version:** 6.33.004  
**Boot Code Version:** 1.02.001  
**MIB Version:** 6.32.B011  
**D-View Module Version:** N/A  
**Published:** Apr.1, 2026

These release notes include important information about D-Link switch firmware revisions. Please verify that these release notes are correct for your switch:

- If you are installing a new switch, please check the hardware version on the device label; make sure that your switch meets the system requirement of this firmware version. Please refer to [Revision History and System Requirement](#) for detailed firmware and hardware matrix.
- If the switch is powered on, you can check the hardware version by typing "show switch" command via Telnet or by checking the device information page on the web graphic user interface.
- If you plan to upgrade to the new firmware release, please refer to the [Upgrade Instructions](#) for the correct firmware upgrade procedure.

For more detailed information regarding our switch products, please refer to [Related Documentation](#).

You can also download the switch firmware, D-View modules and technical documentation from <http://tsd.dlink.com.tw>.

**Content:**

Upgrade Instructions: .....	10
Upgrade using CLI (via Telnet) .....	10
Upgrade using Web-UI .....	11
Upgrade using D-Link Network Assistant.....	13
New Features: .....	17
Changes of MIB: .....	21
Changes of Command Line Interface: .....	24
Problem Fixed: .....	28
Known Issues: .....	44
Related Documentation: .....	44

## Revision History and System Requirement:

Firmware Version	Date	Model	Hardware Version
Runtime: v6.33.004 Boot: 1.02.001	25- Mar.-26	DGS-1210 SERIES (DGS-1210-10/10P/10MP/20/26/28/28P/28MP/52/52MP)	10P/10MP : F1/F2/F3 Other model: F1/F2/F3/F4/F5
Runtime: v6.33.003 Boot: 1.02.001	29- Jan.-26	DGS-1210 SERIES (DGS-1210-10/10P/10MP/20/26/28/28P/28MP/52/52MP)	10P/10MP : F1/F2/F3 Other model: F1/F2/F3/F4/F5
Runtime: v6.33.002 Boot: 1.02.001	23- Dec.-25	DGS-1210 SERIES (DGS-1210-10/10P/10MP/20/26/28/28P/28MP/52/52MP)	10P/10MP : F1/F2/F3 Other model: F1/F2/F3/F4/F5
Runtime: v6.33.001 Boot: 1.02.001	23- Oct.-25	DGS-1210 SERIES (DGS-1210-10/10P/10MP/20/26/28/28P/28MP/52/52MP)	10P/10MP : F1/F2/F3 Other model: F1/F2/F3/F4/F5
Runtime: v6.32.B025 Boot: 1.02.001	09- Oct.-25	DGS-1210 SERIES (DGS-1210-10/10P/10MP/20/26/28/28P/28MP/52/52MP)	10P/10MP : F1/F2/F3 Other model: F1/F2/F3/F4/F5
Runtime: v6.32.B024 Boot: 1.02.001	12- Sep.-25	DGS-1210 SERIES (DGS-1210-10/10P/10MP/20/26/28/28P/28MP/52/52MP)	10P/10MP : F1/F2/F3 Other model: F1/F2/F3/F4/F5
Runtime: v6.32.B023 Boot: 1.02.001	25- Aug.-25	DGS-1210 SERIES (DGS-1210-10/10P/10MP/20/26/28/28P/28MP/52/52MP)	10P/10MP : F1/F2/F3 Other model: F1/F2/F3/F4/F5
Runtime: v6.32.B022 Boot: 1.02.001	17- Jul.-25	DGS-1210 SERIES (DGS-1210-10/10P/10MP/20/26/28/28P/28MP/52/52MP)	10P/10MP : F1/F2/F3 Other model: F1/F2/F3/F4/F5
Runtime: v6.32.B021 Boot: 1.02.001	22- May.-25	DGS-1210 SERIES (DGS-1210-10/10P/10MP/20/26/28/28P/28MP/52/52MP)	10P/10MP : F1/F2/F3 Other model: F1/F2/F3/F4/F5
Runtime: v6.32.B020 Boot: 1.02.001	30- Apr.-25	DGS-1210 SERIES (DGS-1210-10/10P/10MP/20/26/28/28P/28MP/52/52MP)	10P/10MP : F1/F2/F3 Other model: F1/F2/F3/F4/F5
Runtime: v6.32.B019 Boot: 1.02.001	11- Nov.-24	DGS-1210 SERIES (DGS-1210-10/10P/10MP/20/26/28/28P/28MP/52/52MP)	10P/10MP : F1/F2/F3 Other model: F1/F2/F3/F4/F5
Runtime: v6.32.B018 Boot: 1.02.001	29- Oct.-24	DGS-1210 SERIES (DGS-1210-10/10P/10MP/20/26/28/28P/28MP/52/52MP)	10P/10MP : F1/F2/F3 Other model: F1/F2/F3/F4/F5
Runtime: v6.32.B017 Boot:	25- Sep.-24	DGS-1210 SERIES (DGS-1210-10/10P/10MP/20/26/28/28P/28MP/52/52MP)	10P/10MP : F1/F2/F3 Other model:

1.02.001			F1/F2/F3/F4/F5
Runtime: v6.32.B016 Boot: 1.02.001	26- Aug.-24	DGS-1210 SERIES (DGS-1210-10/10P/10MP/20/26/28/28P/28MP/52/52MP)	10P/10MP : F1/F2/F3 Other model: F1/F2/F3/F4/F5
Runtime: v6.32.B015 Boot: 1.02.001	19- Jul.-24	DGS-1210 SERIES (DGS-1210-10/10P/10MP/20/26/28/28P/28MP/52/52MP)	10P/10MP : F1/F2/F3 Other model: F1/F2/F3/F4/F5
Runtime: v6.32.B014 Boot: 1.02.001	12- Jul.-24	DGS-1210 SERIES (DGS-1210-10/10P/10MP/20/26/28/28P/28MP/52/52MP)	10P/10MP : F1/F2/F3 Other model: F1/F2/F3/F4/F5
Runtime: v6.32.B013 Boot: 1.02.001	28- May.-24	DGS-1210 SERIES (DGS-1210-10/10P/10MP/20/26/28/28P/28MP/52/52MP)	
Runtime: v6.32.B012 Boot: 1.02.001	28- Mar.-24	DGS-1210 SERIES (DGS-1210-10/10P/10MP/20/26/28/28P/28MP/52/52MP)	10P/10MP : F1/F2/F3 Other model: F1/F2/F3/F4/F5
Runtime: v6.32.B011 Boot: 1.02.001	13- Mar.-24	DGS-1210 SERIES (DGS-1210-10/10P/10MP/20/26/28/28P/28MP/52/52MP)	10P/10MP : F1/F2/F3 Other model: F1/F2/F3/F4/F5
Runtime: v6.32.B010 Boot: 1.02.001	04- Mar.-24	DGS-1210 SERIES (DGS-1210-10/10P/10MP/20/26/28/28P/28MP/52/52MP)	10P/10MP : F1/F2/F3 Other model: F1/F2/F3/F4/F5
Runtime: v6.32.B009 Boot: 1.02.001	08- Jan-24	DGS-1210 SERIES (DGS-1210-10/10P/10MP/20/26/28/28P/28MP/52/52MP)	10P/10MP : F1/F2/F3 Other model: F1/F2/F3/F4/F5
Runtime: v6.31.B039 Boot: 1.02.001	15- Dec.-23	DGS-1210 SERIES (DGS-1210-10/10P/10MP/20/26/28/28P/28MP/52/52MP)	10P/10MP : F1/F2/F3 Other model: F1/F2/F3/F4/F5
Runtime: v6.31.B038 Boot: 1.02.001	11- Dec.-23	DGS-1210 SERIES (DGS-1210-10/10P/10MP/20/26/28/28P/28MP/52/52MP)	10P/10MP : F1/F2/F3 Other model: F1/F2/F3/F4/F5
Runtime: v6.32.008 Boot: 1.02.001	07- Dec-23	DGS-1210 SERIES (DGS-1210-10/10P/10MP/20/26/28/28P/28MP/52/52MP)	10P/10MP : F1/F2/F3 Other model: F1/F2/F3/F4/F5
Runtime: v6.31.B037 Boot: 1.02.001	17- Nov -23	DGS-1210 SERIES (DGS-1210-10/10P/10MP/20/26/28/28P/28MP/52/52MP)	10P/10MP : F1/F2/F3 Other model: F1/F2/F3/F4/F5

Runtime: v6.31.B036 Boot: 1.02.001	23- Aug.-23	DGS-1210 SERIES (DGS-1210-10/10P/10MP/20/26/28/28P/28MP /52/52MP)	10P/10MP : F1/F2/F3 Other model: F1/F2/F3/F4/F5
Runtime: v6.31.B035 Boot: 1.02.001	11- May.-23	DGS-1210 SERIES (DGS-1210-10/10P/10MP/20/26/28/28P/28MP /52/52MP)	10P/10MP : F1/F2/F3 Other model: F1/F2/F3/F4/F5
Runtime: v6.31.B034 Boot: 1.02.001	13- Mar.-23	DGS-1210 SERIES (DGS-1210-10/10P/10MP/20/26/28/28P/28MP /52/52MP)	10P/10MP : F1/F2/F3 Other model: F1/F2/F3/F4/F5
Runtime: v6.31.B033 Boot: 1.02.001	07- Feb.-23	DGS-1210 SERIES (DGS-1210-10/10P/10MP/20/26/28/28P/28MP /52/52MP)	10P/10MP : F1/F2/F3 Other model: F1/F2/F3/F4/F5
Runtime: v6.31.B032 Boot: 1.02.001	07- Feb.-23	DGS-1210 SERIES (DGS-1210-10/10P/10MP/20/26/28/28P/28MP /52/52MP)	10P/10MP : F1/F2/F3 Other model: F1/F2/F3/F4/F5
Runtime: v6.31.B031 Boot: 1.02.001	17- Nov.-22	DGS-1210 SERIES (DGS-1210-10/10P/10MP/20/26/28/28P/28MP /52/52MP)	10P/10MP : F1/F2/F3 Other model: F1/F2/F3/F4/F5
Runtime: v6.31.B030 Boot: 1.02.001	13- Oct.-22	DGS-1210 SERIES (DGS-1210-10/10P/10MP/20/26/28/28P/28MP /52/52MP)	10P/10MP : F1/F2/F3 Other model: F1/F2/F3/F4/F5
Runtime: v6.31.B006 Boot: 1.02.001	19- Aug.-22	DGS-1210 SERIES (DGS-1210-10/10P/10MP/20/26/28/28P/28MP /52/52MP)	10P/10MP : F1/F2/F3 Other model: F1/F2/F3/F4/F5
Runtime: v6.31.B005 Boot: 1.02.001	15- Aug.-22	DGS-1210 SERIES (DGS-1210-10/10P/10MP/20/26/28/28P/28MP /52/52MP)	10P/10MP : F1/F2/F3 Other model: F1/F2/F3/F4/F5
Runtime: v6.31.B004 Boot: 1.02.001	08- Aug.-22	DGS-1210 SERIES (DGS-1210-10/10P/10MP/20/26/28/28P/28MP /52/52MP)	10P/10MP : F1/F2/F3 Other model: F1/F2/F3/F4/F5
Runtime: v6.31.B003 Boot: 1.02.001	15- Jul.-22	DGS-1210 SERIES (DGS-1210-10/10P/10MP/20/26/28/28P/28MP /52/52MP)	10P/10MP : F1/F2/F3 Other model: F1/F2/F3/F4/F5
Runtime: v6.31.002 Boot: 1.02.001	28- Apr.-22	DGS-1210 SERIES (DGS-1210-10/10P/10MP/20/26/28/28P/28MP /52/52MP)	10P/10MP : F1/F2/F3 Other model: F1/F2/F3/F4/F5
Runtime: v6.30.B026 Boot: 1.02.001	22- Apr.-22	DGS-1210 SERIES (DGS-1210-10/10P/10MP/20/26/28/28P/28MP /52/52MP)	10P/10MP : F1/F2 Other model: F1/F2/F3/F4

Runtime: v6.30.B025 Boot: 1.02.001	08- Apr.-22	DGS-1210 SERIES (DGS-1210-10/10P/10MP/20/26/28/28P/28MP /52/52MP)	10P/10MP : F1/F2 Other model: F1/F2/F3/F4
Runtime: v6.30.B024 Boot: 1.02.001	18- Mar.-22	DGS-1210 SERIES (DGS-1210-10/10P/10MP/20/26/28/28P/28MP /52/52MP)	10P/10MP : F1/F2 Other model: F1/F2/F3/F4
Runtime: v6.30.B023 Boot: 1.02.001	10- Mar.-22	DGS-1210 SERIES (DGS-1210-10/10P/10MP/20/26/28/28P/28MP /52/52MP)	10P/10MP : F1/F2 Other model: F1/F2/F3/F4
Runtime: v6.30.B022 Boot: 1.02.001	22- Feb.-22	DGS-1210 SERIES (DGS-1210-10/10P/10MP/20/26/28/28P/28MP /52/52MP)	10P/10MP : F1/F2 Other model: F1/F2/F3/F4
Runtime: v6.30.B021 Boot: 1.02.001	14- Jan.-22	DGS-1210 SERIES (DGS-1210-10/10P/10MP/20/26/28/28P/28MP /52/52MP)	10P/10MP : F1/F2 Other model: F1/F2/F3/F4
Runtime: v6.30.B020 Boot: 1.02.001	19- Nov.-21	DGS-1210 SERIES (DGS-1210-10/10P/10MP/20/26/28/28P/28MP /52/52MP)	10P/10MP : F1/F2 Other model: F1/F2/F3/F4
Runtime: v6.30.B019 Boot: 1.02.001	22- Oct.-21	DGS-1210 SERIES (DGS-1210-10/10P/10MP/20/26/28/28P/28MP /52/52MP)	10P/10MP : F1/F2 Other model: F1/F2/F3/F4
Runtime: v6.30.B018 Boot: 1.02.001	18- Oct.-21	DGS-1210 SERIES (DGS-1210-10/10P/10MP/20/26/28/28P/28MP /52/52MP)	10P/10MP : F1/F2 Other model: F1/F2/F3/F4
Runtime: v6.30.B017 Boot: 1.02.001	13- Oct.-21	DGS-1210 SERIES (DGS-1210-10/10P/10MP/20/26/28/28P/28MP /52/52MP)	10P/10MP : F1/F2 Other model: F1/F2/F3/F4
Runtime: v6.30.016 Boot: 1.02.001	23- Aug.-21	DGS-1210 SERIES (DGS-1210-10/10P/10MP/20/26/28/28P/28MP /52/52MP)	10P/10MP : F1/F2 Other model: F1/F2/F3/F4
Runtime: v6.20.B019 Boot: 1.00.010	29- Jun.-21	DGS-1210 SERIES (DGS-1210-10/10P/10MP/20/26/28/28P/28MP /52/52MP)	10P/10MP : F1 Other model: F1/F2
Runtime: v6.20.B018 Boot: 1.00.010	18- Jun.-21	DGS-1210 SERIES (DGS-1210-10/10P/10MP/20/26/28/28P/28MP /52/52MP)	10P/10MP : F1 Other model: F1/F2
Runtime: v6.20.B017 Boot: 1.00.010	01- Jun.-21	DGS-1210 SERIES (DGS-1210-10/10P/10MP/20/26/28/28P/28MP /52/52MP)	10P/10MP : F1 Other model: F1/F2

Runtime: v6.20.B016 Boot: 1.00.010	06- Apr.-21	DGS-1210 SERIES (DGS-1210-10/10P/10MP/20/26/28/28P/28MP /52/52MP)	10P/10MP : F1 Other model: F1/F2
Runtime: v6.20.B015 Boot: 1.00.010	09- Feb.-21	DGS-1210 SERIES (DGS-1210-10/10P/10MP/20/26/28/28P/28MP /52/52MP)	10P/10MP : F1 Other model: F1/F2
Runtime: v6.20.B014 Boot: 1.00.010	16- Dec.-20	DGS-1210 SERIES (DGS-1210-10/10P/10MP/20/26/28/28P/28MP /52/52MP)	10P/10MP : F1 Other model: F1/F2
Runtime: v6.20.B013 Boot: 1.00.010	11- Dec.-20	DGS-1210 SERIES (DGS-1210-10/10P/10MP/20/26/28/28P/28MP /52/52MP)	10P/10MP : F1 Other model: F1/F2
Runtime: v6.20.B012 Boot: 1.00.010	27- Nov.-20	DGS-1210 SERIES (DGS-1210-10/10P/10MP/20/26/28/28P/28MP /52/52MP)	10P/10MP : F1 Other model: F1/F2
Runtime: v6.20.B011 Boot: 1.00.010	18- Nov.-20	DGS-1210 SERIES (DGS-1210-10/10P/10MP/20/26/28/28P/28MP /52/52MP)	10P/10MP : F1 Other model: F1/F2
Runtime: v6.20.B010 Boot: 1.00.010	25- Sep.-20	DGS-1210 SERIES (DGS-1210-10/10P/10MP/20/26/28/28P/28MP /52/52MP)	10P/10MP : F1 Other model: F1/F2
Runtime: v6.20.B009 Boot: 1.00.010	04- Sep.-20	DGS-1210 SERIES (DGS-1210-10/10P/10MP/20/26/28/28P/28MP /52/52MP)	10P/10MP : F1 Other model: F1/F2
Runtime: v6.20.B008 Boot: 1.00.010	09- Jul.-20	DGS-1210 SERIES (DGS-1210-10/10P/10MP/20/26/28/28P/28MP /52/52MP)	10P/10MP : F1 Other model: F1/F2
Runtime: v6.20.007 Boot: 1.00.010	22- Jun.-20	DGS-1210 SERIES (DGS-1210-10/10P/10MP/20/26/28/28P/28MP /52/52MP)	10P/10MP : F1 Other model: F1/F2
Runtime: v6.13.B003 Boot: 1.00.010	15- Jun.-20	DGS-1210 SERIES (DGS-1210-10/10P/10MP/20/26/28/28P/28MP /52/52MP)	F1
Runtime: v6.13.B002 Boot: 1.00.010	13- Apr.-20	DGS-1210 SERIES (DGS-1210-10/10P/10MP/20/26/28/28P/28MP /52/52MP)	F1
Runtime: v6.12.B008 Boot: 1.00.010	13- Mar.-20	DGS-1210 SERIES (DGS-1210-10/10P/10MP/20/26/28/28P/28MP /52/52MP)	F1

Runtime: v6.12.B007 Boot: 1.00.010	09- Dec.-19	DGS-1210 SERIES (DGS-1210-10/10P/10MP/20/26/28/28P/28MP F1 /52/52MP)	
Runtime: v6.12.B006 Boot: 1.00.010	04- Dec.-19	DGS-1210 SERIES (DGS-1210-10/10P/10MP/20/26/28/28P/28MP F1 /52/52MP)	
Runtime: v6.12.B005 Boot: 1.00.010	19- Nov.-19	DGS-1210 SERIES (DGS-1210-10/10P/10MP/20/26/28/28P/28MP F1 /52/52MP)	
Runtime: v6.12.B004 Boot: 1.00.010	24- Oct.-19	DGS-1210 SERIES (DGS-1210-10/10P/10MP/20/26/28/28P/28MP F1 /52/52MP)	
Runtime: v6.12.B003 Boot: 1.00.010	08- Oct.-19	DGS-1210 SERIES (DGS-1210-10/10P/10MP/20/26/28/28P/28MP F1 /52/52MP)	
Runtime: v6.12.B002 Boot: 1.00.010	18- Sep.-19	DGS-1210 SERIES (DGS-1210-10/10P/10MP/20/26/28/28P/28MP F1 /52/52MP)	
Runtime: v6.12.B001 Boot: 1.00.010	06- Sep.-19	DGS-1210 SERIES (DGS-1210-10/10P/10MP/20/26/28/28P/28MP F1 /52/52MP)	
Runtime: v6.11.B034 Boot: 1.00.010	26- Aug.-19	DGS-1210 SERIES (DGS-1210-10/10P/10MP/20/26/28/28P/28MP F1 /52/52MP)	
Runtime: v6.11.B033 Boot: 1.00.010	02- Aug.-19	DGS-1210 SERIES (DGS-1210-10/10P/10MP/20/26/28/28P/28MP F1 /52/52MP)	
Runtime: v6.11.B032 Boot: 1.00.010	29- Jul.-19	DGS-1210 SERIES (DGS-1210-10/10P/10MP/20/26/28/28P/28MP F1 /52/52MP)	
Runtime: v6.11.B031 Boot: 1.00.010	05- Jul.-19	DGS-1210 SERIES (DGS-1210-10/10P/10MP/20/26/28/28P/28MP F1 /52/52MP)	
Runtime: v6.11.B030 Boot: 1.00.010	12- Jun.-19	DGS-1210 SERIES (DGS-1210-10/10P/10MP/20/26/28/28P/28MP F1 /52/52MP)	
Runtime: v6.11.B029 Boot: 1.00.010	28- May.-19	DGS-1210 SERIES (DGS-1210-10/10P/10MP/20/26/28/28P/28MP F1 /52/52MP)	

Runtime: v6.11.B028 Boot: 1.00.010	19- Apr.-19	DGS-1210 SERIES (DGS-1210-10/10P/10MP/20/26/28/28P/28MP F1 /52/52MP)	
Runtime: v6.11.B027 Boot: 1.00.010	02- Apr.-19	DGS-1210 SERIES (DGS-1210-10/10P/10MP/20/26/28/28P/28MP F1 /52/52MP)	
Runtime: v6.11.B026 Boot: 1.00.010	22- Feb.-19	DGS-1210 SERIES (DGS-1210-10/10P/10MP/20/26/28/28P/28MP F1 /52/52MP)	
Runtime: v6.11.B025 Boot: 1.00.010	09- Jan.-19	DGS-1210 SERIES (DGS-1210-10/10P/10MP/20/26/28/28P/28MP F1 /52/52MP)	
Runtime: v6.11.B024 Boot: 1.00.010	29- Nov.-18	DGS-1210 SERIES (DGS-1210-10/10P/10MP/20/26/28/28P/28MP F1 /52/52MP)	
Runtime: v6.11.B023 Boot: 1.00.010	20- Nov.-18	DGS-1210 SERIES (DGS-1210-10/10P/10MP/20/26/28/28P/28MP F1 /52/52MP)	
Runtime: v6.11.B022 Boot: 1.00.010	29- Oct.-18	DGS-1210 SERIES (DGS-1210-10/10P/10MP/20/26/28/28P/28MP F1 /52/52MP)	
Runtime: v6.11.B021 Boot: 1.00.010	09- Oct.-18	DGS-1210 SERIES (DGS-1210-10/10P/10MP/20/26/28/28P/28MP F1 /52/52MP)	
Runtime: v6.11.B020 Boot: 1.00.010	20- Jul.-18	DGS-1210 SERIES (DGS-1210-10/10P/10MP/20/26/28/28P/28MP F1 /52/52MP)	
Runtime: v6.11.B019 Boot: 1.00.010	09- Jul.-18	DGS-1210 SERIES (DGS-1210-10/10P/10MP/20/26/28/28P/28MP F1 /52/52MP)	
Runtime: v6.11.B018 Boot: 1.00.010	20- Jun.-18	DGS-1210 SERIES (DGS-1210-10/10P/10MP/20/26/28/28P/28MP F1 /52/52MP)	
Runtime: v6.11.B017 Boot: 1.00.010	11- Jun.-18	DGS-1210 SERIES (DGS-1210-10/10P/10MP/20/26/28/28P/28MP F1 /52/52MP)	
Runtime: v6.11.B016 Boot: 1.00.010	22- May.-18	DGS-1210 SERIES (DGS-1210-10/10P/10MP/20/26/28/28P/28MP F1 /52/52MP)	

Runtime: v6.11.B015 Boot: 1.00.010	15- May.-18	DGS-1210 SERIES (DGS-1210-10/10P/10MP/20/26/28/28P/28MP F1 /52/52MP)	
Runtime: v6.11.B014 Boot: 1.00.010	10- Apr.-18	DGS-1210 SERIES (DGS-1210-10/10P/10MP/20/26/28/28P/28MP F1 /52/52MP)	
Runtime: v6.11.B013 Boot: 1.00.010	08- Mar.-18	DGS-1210 SERIES (DGS-1210-10/10P/10MP/20/26/28/28P/28MP F1 /52/52MP)	
Runtime: v6.11.B012 Boot: 1.00.010	27- Feb.-18	DGS-1210 SERIES (DGS-1210-10/10P/10MP/20/26/28/28P/28MP F1 /52/52MP)	
Runtime: v6.10.B012 Boot: 1.00.010	08- Jan.-18	DGS-1210 SERIES (DGS-1210-10/10P/10MP/20/26/28/28P/28MP F1 /52/52MP)	
Runtime: v6.10.B011 Boot: 1.00.010	20- Dec.-17	DGS-1210 SERIES (DGS-1210-10/10P/10MP/20/26/28/28P/28MP F1 /52/52MP)	
Runtime: v6.10.B010 Boot: 1.00.010	13- Dec.-17	DGS-1210 SERIES (DGS-1210-10/10P/10MP/20/26/28/28P/28MP F1 /52/52MP)	
Runtime: v6.10.B009 Boot: 1.00.010	30- Nov.-17	DGS-1210 SERIES (DGS-1210-10/10P/10MP/20/26/28/28P/28MP F1 /52/52MP)	
Runtime: v6.10.B008 Boot: 1.00.010	21- Nov.-17	DGS-1210 SERIES (DGS-1210-10/10P/10MP/20/26/28/28P/28MP F1 /52/52MP)	
Runtime: v6.10.007 Boot: 1.00.010	20- Oct.-17	DGS-1210 SERIES (DGS-1210-10/10P/10MP/20/26/28/28P/28MP F1 /52/52MP)	
Runtime: v6.00.B024 Boot: 1.00.009	16- Oct.-17	DGS-1210 SERIES (DGS-1210-10/10P/10MP/20/26/28/28P/28MP F1 /52/52MP)	
Runtime: v6.00.B023 Boot: 1.00.009	02- Oct.-17	DGS-1210 SERIES (DGS-1210-10/10P/10MP/20/26/28/28P/28MP F1 /52/52MP)	
Runtime: v6.00.B022 Boot: 1.00.009	22- Sep.-17	DGS-1210 SERIES (DGS-1210-10/10P/10MP/20/26/28/28P/28MP F1 /52/52MP)	

Runtime: v6.00.B020 Boot: 1.00.009	30- Aug.-17	DGS-1210 SERIES (DGS-1210-10/10P/10MP/20/26/28/28P/28MP F1 /52/52MP)	
Runtime: v6.00.B019 Boot: 1.00.009	11- Jul.-17	DGS-1210 SERIES (DGS-1210-10/10P/10MP/20/26/28/28P/28MP F1 /52/52MP)	
Runtime: v6.00.B018 Boot: 1.00.009	07- Jun.-17	DGS-1210 SERIES (DGS-1210-10/10P/10MP/20/26/28/28P/28MP F1 /52/52MP)	
Runtime: v6.00.B017 Boot: 1.00.009	04- May.-17	DGS-1210 SERIES (DGS-1210-10/10P/10MP/20/26/28/28P/28MP F1 /52/52MP)	
Runtime: v6.00.016 Boot: 1.00.009	04- Mar.-17	DGS-1210 SERIES (DGS-1210-10/10P/10MP/20/26/28/28P/28MP F1 /52/52MP)	

## Upgrade Instructions:

D-Link Smart Switches support firmware upgrade via TFTP server. You can download the firmware from D-Link web site <http://tsd.dlink.com.tw>, and copy the downloaded firmware to the TFTP server folder. Please make sure that the TFTP server is accessible from the switch via networks.

### Upgrade using CLI (via Telnet)

1. Make sure the network connection between the switch and PC is active.
2. Use software that supports telnet, for example, HyperTerminal or Telnet command in Microsoft Windows, to connect to the switch. If you are using Telnet command, type the command followed by the switch IP address, eg. *telnet 10.90.90.90*.
3. The logon prompt will appear.

The switch will prompt the user to enter his/her username and password. It should be noted that upon the initial connection, both the default user name and password are **admin**.

To upgrade the switch firmware, execute the following command:

Command	Function
download{firmware_fromTFTP tftp://ip-address/filename   cfg_fromTFTP tftp://ip-address/filename}	Download firmware file from the TFTP server to the switch.

When completing firmware upgrade, the following messages will pop up.

```
Device will reboot after firmware upgraded successfully
Image upgraded successfully
```

4. Execute the following command to check the firmware version and switch's information.

Command	Function
show switch	Display the information of current firmware and boot version.

## Example:

### 1. **DGS-1210 SERIES:**

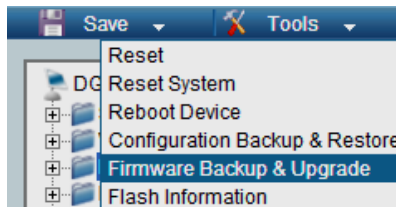
```
Command: download firmware_from TFTP tftp://10.90.90.91
DGS-1210-FX-SERIES-FX-6-30-B022.hex
Device will reboot after firmware upgraded successfully
Image upgraded successfully
```

### 2. **DGS-1210 SERIES:**

```
Command: show switch
DGS-1210 SERIES> show switch
System name                :
System Contact              :
System Location             :
System up time              : 0 days, 0 hrs, 2 min, 31 secs
System Time                 : 01/01/2021 00:02:19
System hardware version     : F1
System firmware version    : 6.31.002
System boot version         : 1.02.001
System serial number        : QBDGS12105200
MAC Address                 : 9C-D6-43-AA-58-77
```

## Upgrade using Web-UI

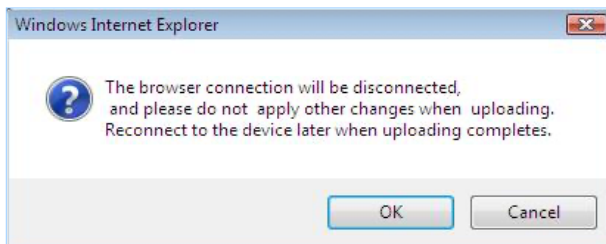
1. Connect a workstation installed with java SE runtime environment to any switch port of the device.
2. Open the web browser from the workstation and enter the IP address of the switch. The switch's default IP address is 10.90.90.90.
3. Enter administrator's password when prompted. The password is **admin** by default.
4. To update switch's firmware or configuration file, select **Tools > Firmware Backup & Upgrade** from the banner.



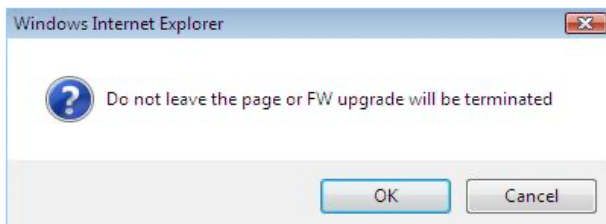
5. Two methods can be selected : **HTTP** or **TFTP**



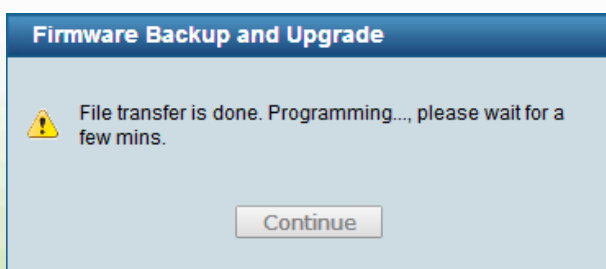
6. Select **HTTP** to upgrade the firmware to or from your local drive of PC.
  - a. Click **Browse** to browse your inventories for a saved firmware file
  - b. Click **Upgrade** after selecting the firmware file you want to restore
  - c. Click **OK** to continue with firmware upgrade

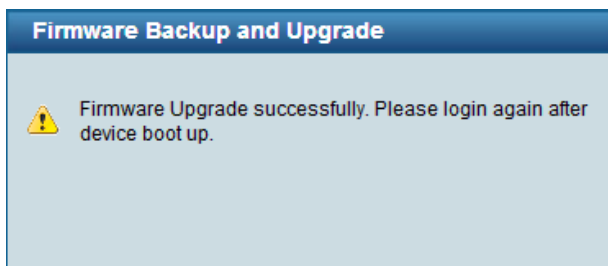


- d. Click **OK** to continue with firmware upgrade

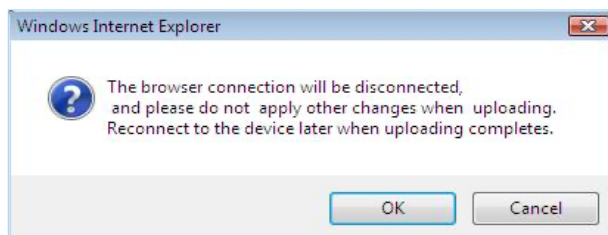


- e. Wait until the "Firmware Upgrade Successful" message pops up and login again after device boots up.

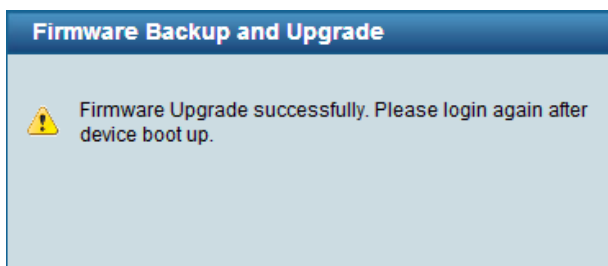




7. Select **TFTP** to upgrade the firmware to or from a remote TFTP server.
  - a. Enter the name of the firmware file located on the TFTP server
  - b. Click **Upgrade** after selecting the firmware file you want to restore
  - c. Click **OK** to continue with firmware upgrade

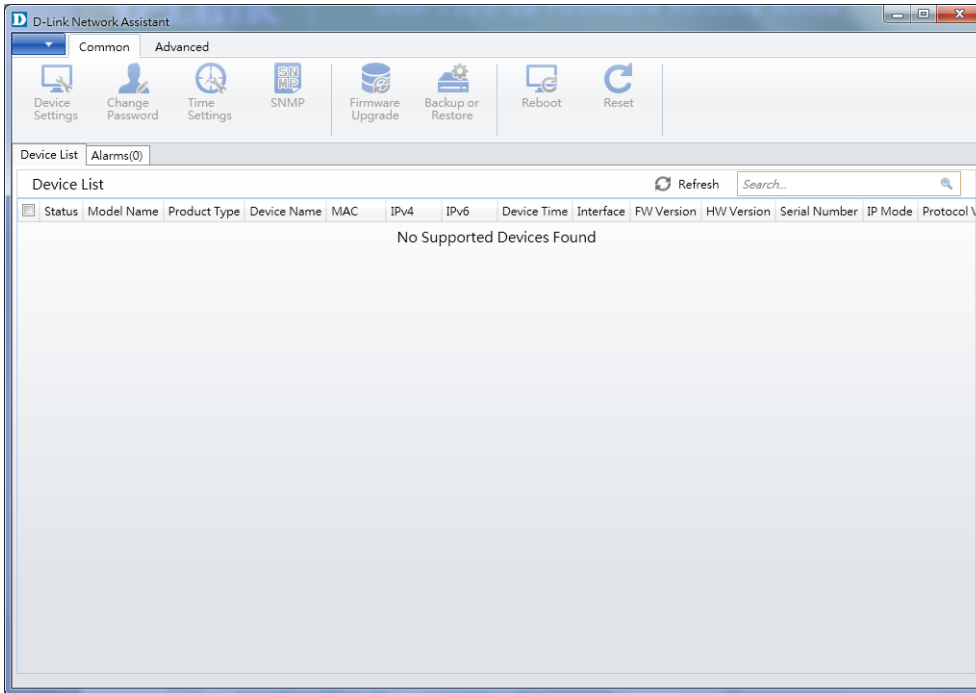


- d. Wait until the firmware upgrade ends and login again after device boots up.

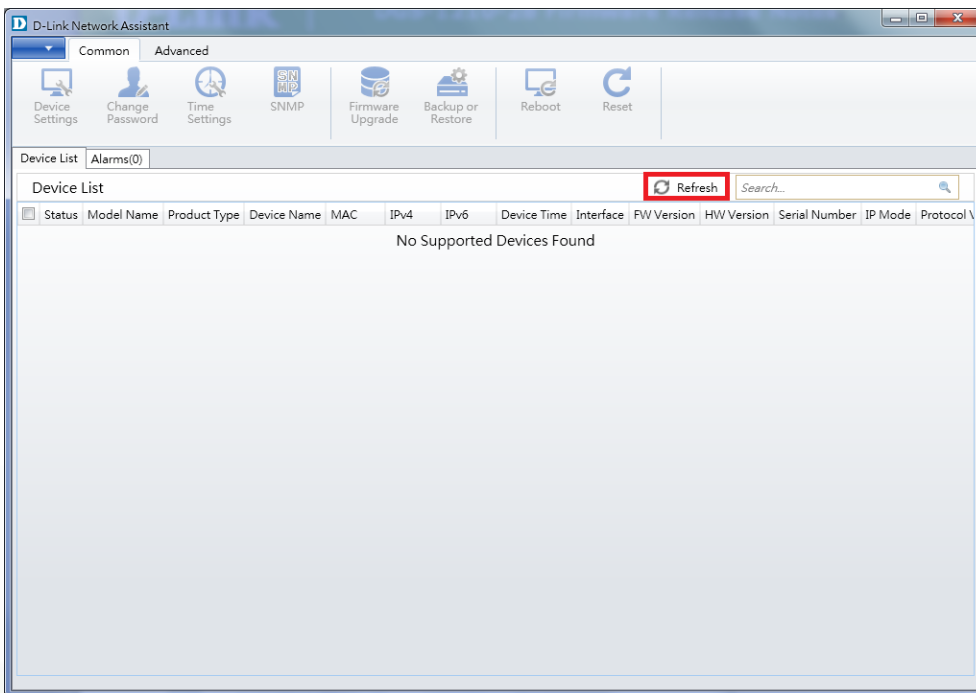


### **Upgrade using D-Link Network Assistant**

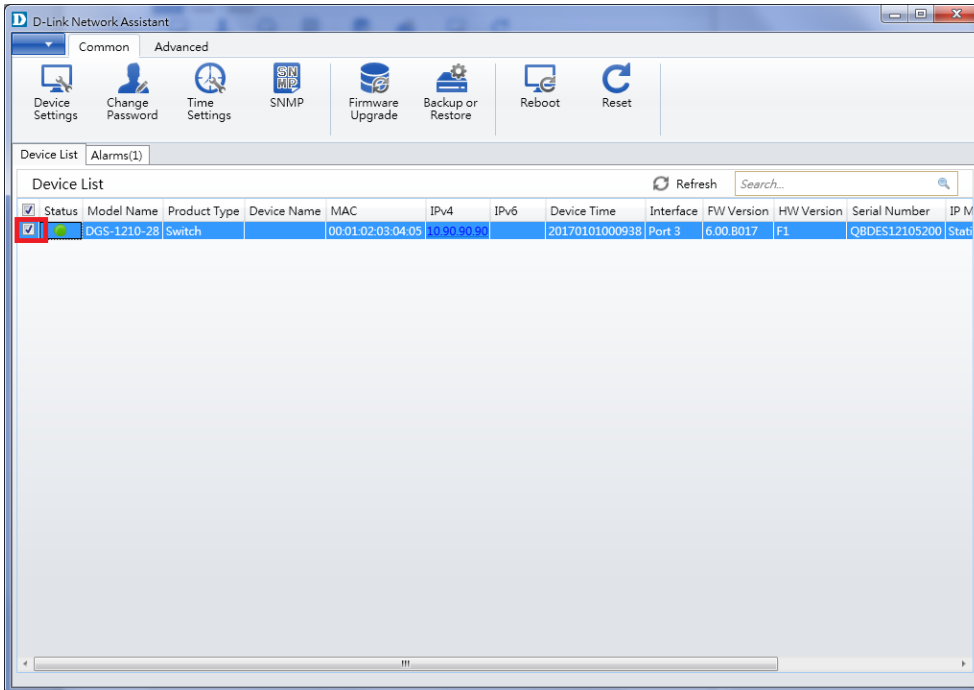
1. Connect a workstation installed with java SE runtime environment to any switch port of the device
2. Execute D-Link Network Assistant



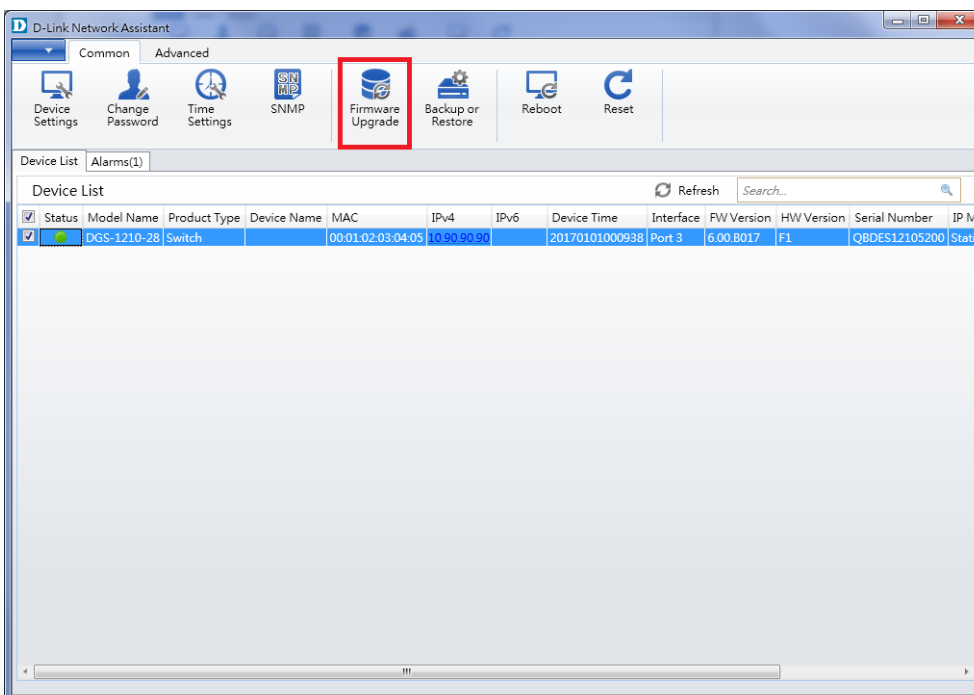
3. Click Refresh button to search target switch



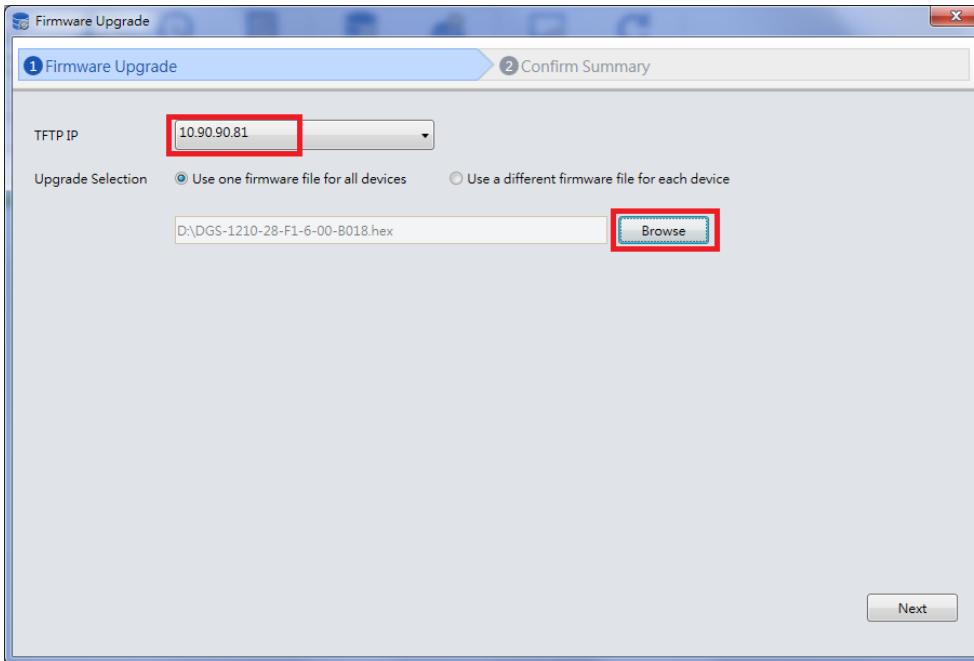
4. Single click the icon of the column to choose the target switch



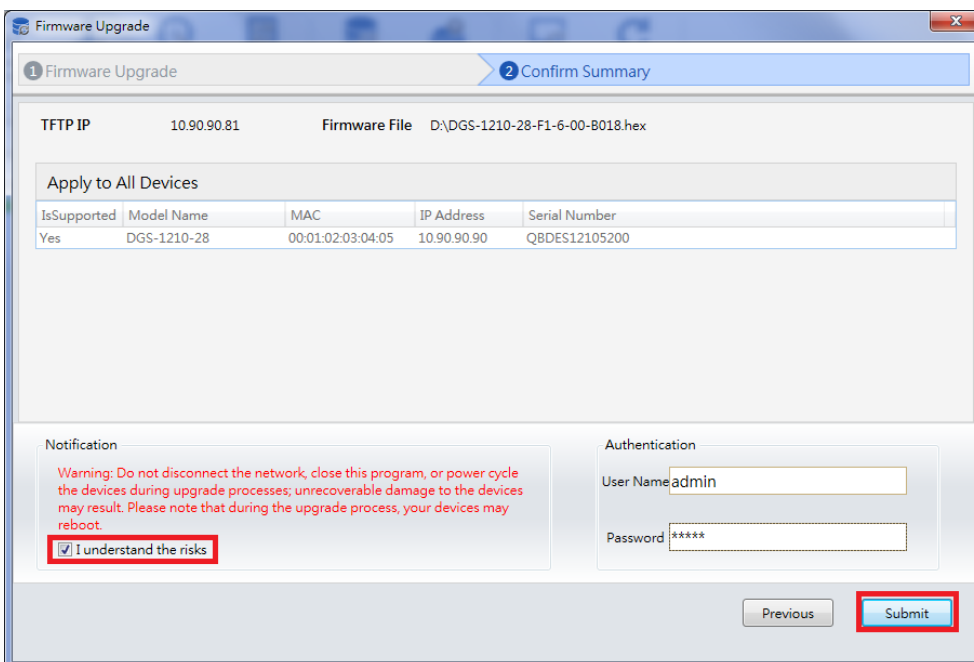
5. Click Firmware Upgrade button



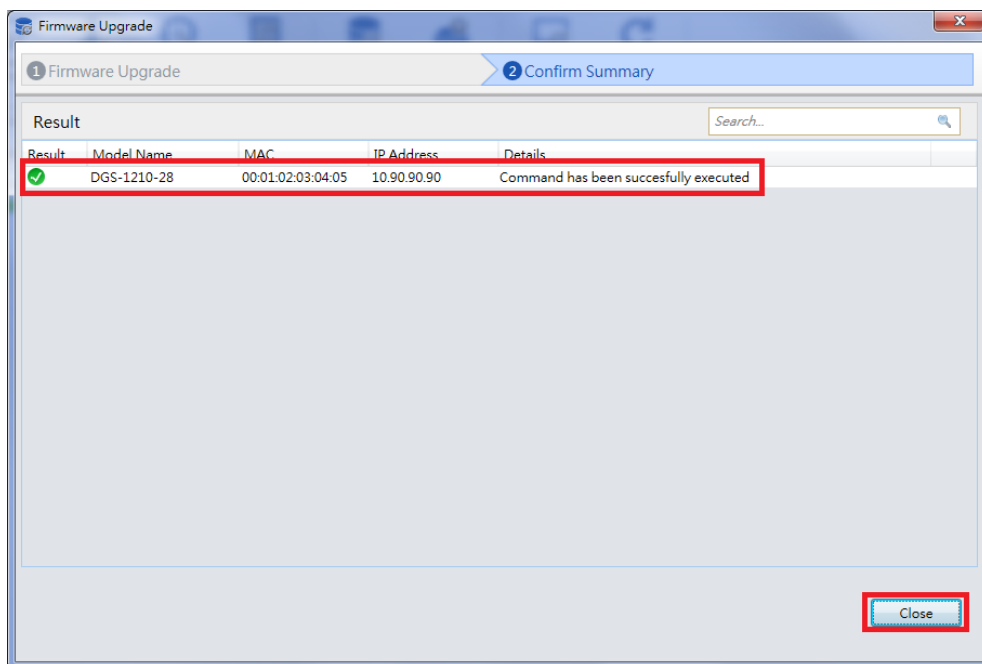
6. Select PC IP address is used to connect the target switch, then click Browse button and select the firmware file (Model name\_HW ver.\_FW ver.hex) on your local hard drive.



7. Click the checkbox and click "Submit" button to start firmware upgrade.



8. Once the message changed to success, click "Close" button to complete and exit the firmware upgrade.



### New Features/Spec change:

Firmware Version	New Features
V6.33.004	N/A
V6.33.003	N/A
V6.33.002	Support D-link Nuclias Unity.
V6.33.001	N/A
V6.32.B025	N/A
V6.32.B024	N/A
V6.32.B023	N/A
V6.32.B022	N/A
V6.32.B021	N/A
V6.32.B020	N/A
V6.32.B019	N/A
V6.32.B018	N/A
V6.32.B017	N/A
V6.32.B016	N/A
V6.32.B015	N/A
V6.32.B014	N/A
V6.32.B013	N/A
V6.32.B012	Support Prevent Blat Attack
V6.32.B011	N/A
V6.32.B010	N/A
V6.32.B009	N/A
V6.31.B039	N/A
V6.31.B038	N/A
V6.32.008	1. Support Auto IGMP 2. Support mDNS

V6.31.B037	N/A
V6.31.B036	N/A
V6.31.B035	1. Issue No: HQ20230406000005 Subject: SNMP Community name[IMA20230404000002-India]
V6.31.B034	N/A
V6.31.B033	N/A
V6.31.B032	N/A
V6.31.B031	N/A
V6.31.B030	Add IPv6 global state enable/disable on CLI.
V6.31.B006	N/A
V6.31.B005	N/A
V6.31.B004	N/A
V6.31.B003	N/A
V6.31.002	Support Realtek PoE 2nd source RTL8238B.
V6.30.B026	N/A
V6.30.B025	N/A
V6.30.B024	N/A
V6.30.B023	N/A
V6.30.B022	N/A
V6.30.B021	N/A
V6.30.B020	N/A
V6.30.B019	N/A
V6.30.B018	N/A
V6.30.B017	N/A
V6.30.016	<ol style="list-style-type: none"> <li>1. Support Guest Vlan, DNS</li> <li>2. Support f/w upgrade using encrypted image file</li> <li>3. Support DDPv5 v0.00.039</li> <li>4. Support Nuclias Connect that switch could be managed by D-Link NMS</li> <li>5. Support Perpetual PoE function for DGS-1210-10P/28P/28MP/52MP</li> <li>7. Web UI support Ping function</li> <li>8. Support TLS 1.3</li> <li>9. Support Broadcom PoE 2nd source BCM59136.</li> </ol> <p><b>Note1:</b> The new image file (*.con) is encrypted which starting from v6.30.016. It needs upgrading to f/w v6.30.16 (.hex) first if attempting to upgrade from (v6.20 or older) to v6.30 (.con). Use v6.30.016 backup encrypted firmware file (.con) to upgrade firmware size will change to 12775084B, normal v6.30.016 hex file upgrade firmware size is 12774896B.</p> <p><b>Note2:</b> The configuration saved from v6.30 is not compatible to f/w v6.20 or older. It might cause unexpected setting or behavior. Please don't try to load new configuration running on old f/w v6.20 or older.</p> <p><b>Note3:</b> The configuration saved from v6.20 or older is compatible to f/w v6.30. It's working to load old configuration running on f/w v6.30.</p>

V6.20.B019	N/A
V6.20.B018	N/A
V6.20.B017	N/A
V6.20.B016	N/A
V6.20.B015	N/A
V6.20.B014	N/A
V6.20.B013	N/A
V6.20.B012	N/A
V6.20.B011	N/A
V6.20.B010	N/A
V6.20.B009	N/A
V6.20.B008	N/A
V6.20.007	N/A
V6.13.B003	N/A
V6.13.B002	<p>1. Issue No: DUSA20200312000001            Subject: Daylight Saving time settings            Description: Add Daylight Saving Time Recurring Setting</p>
V6.12.B008	N/A
V6.12.B007	N/A
V6.12.B006	<p>1. Issue No: HQ20191017000009            Subject: Customer is unable to receive a port description on the DGS-1210-10P when using LLDP[DUSA20191017000002-USA]            Description: LLDP Support Port ID subtype (1,3,5,7) to be configurable</p> <p>2. Issue No: IMA20191126000001            Subject: D-track of DGS-1210-10MP case need urgent help            Description: LLDP packet can not pass through switch by default.</p> <p>Enhance LLDP Global Setting page to allow setting LLDP packet pass through if LLDP is disabled.</p>
V6.12.B005	<p>Enhance SSL/TLS web page to allow TLS version configurable and more ciphersuit with SHA2 configurable.            The following ciphersuit is configurable.</p> <p>ECDHE-RSA-AES128-SHA            ECDHE-RSA-AES256-SHA            RSA-AES128-SHA            RSA-AES256-SHA            RSA-AES128-GCM-SHA256            RSA-AES256-GCM-SHA384            ECDHE-RSA-AES128-GCM-SHA256            ECDHE-RSA-AES256-GCM-SHA384            ECDHE-RSA-CHACHA20-POLY1305-SHA256</p>
V6.12.B004	N/A
V6.12.B003	N/A

V6.12.B002	N/A
V6.12.B001	<p>SSH migration to openSSH v7.8p1 supporting the following encryption algorithm.</p> <ul style="list-style-type: none"> <li>3des-cbc</li> <li>aes128-cbc</li> <li>aes192-cbc</li> <li>aes256-cbc</li> <li>aes128-ctr</li> <li>aes192-ctr</li> <li>aes256-ctr</li> <li>aes128-gcm@openssh.com</li> <li>aes256-gcm@openssh.com</li> <li>chacha20-poly1305@openssh.com</li> </ul>
V6.11.B034	N/A
V6.11.B033	<p>1. Issue No: HQ20190717000007          Subject: [DGS-1210/F1/6.11] doesn't allow to create a lacp gr even if LBD is disabled globally.[DI20190717000002-Japan]          Description: Change the UI on LBD to be able to disable these port state w/o enabling LBD globally</p>
V6.11.B032	<p>1. Issue No: HQ20190717000007          Subject: [DGS-1210/F1/6.11] doesn't allow to create a lacp gr even if LBD is disabled globally.[DI20190717000002-Japan]          Description: LACP aggregation can not be enabled if LBD is disabled globally with specific port is enabled</p>
V6.11.B031	<p>1. Get CPU utilization and Memory utilization by MIB          2. Change FDB aging time by web and MIB</p>
V6.11.B030	N/A
V6.11.B029	N/A
V6.11.B028	N/A
V6.11.B027	N/A
V6.11.B026	N/A
V6.11.B025	N/A
V6.11.B024	N/A
V6.11.B023	N/A
V6.11.B022	N/A
V6.11.B021	N/A
V6.11.B020	N/A
V6.11.B019	N/A
V6.11.B018	N/A
V6.11.B017	N/A
V6.11.B016	N/A
V6.11.B015	N/A
V6.11.B014	N/A

V6.11.B013	N/A
V6.11.B012	<ol style="list-style-type: none"> <li>1. Support SSH public key upload</li> <li>2. Support PD Alive (ASV v2.1)</li> </ol>
V6.10.B012	N/A
V6.10.B011	N/A
V6.10.B010	N/A
V6.10.B009	N/A
V6.10.B008	N/A
V6.10.007	<ol style="list-style-type: none"> <li>1. Support Smart F1 series total image for running image.</li> <li>2. Support TLS feature.(TLS support version v1.0/v1.1/v1.2)</li> <li>3. Firmware upgrade behavior change to update backup image and no auto reboot. DNA UTILITY FW upgrade behavior: 01. DNA Firmware upgrade to backup image. 02. After firmware upgrade finish, DUT will auto change boot image to backup image ID then auto reboot.</li> <li>4. Boot code update DDP version to 0.26.</li> <li>5. IPv4 and IPv6 support "Edit" feature.</li> <li>6. Add Configuration information page.</li> </ol>
V6.00.B024	N/A
V6.00.B023	N/A
V6.00.B022	N/A
V6.00.B020	N/A
V6.00.B019	N/A
V6.00.B018	N/A
V6.00.B017	N/A
V6.00.016	First Release

## Changes of MIB:

The new features of MIB file. For detailed changes of MIB content, please refer to the modification history in each MIB file.

Firmware Version	MIB File	New Features
V6.33.004	DGS-1210-FX-SERIES-FX-6-32-B011.mib	N/A
V6.33.003	DGS-1210-FX-SERIES-FX-6-32-B011.mib	N/A
V6.33.002	DGS-1210-FX-SERIES-FX-6-32-B011.mib	N/A
V6.33.001	DGS-1210-FX-SERIES-FX-6-32-B011.mib	N/A
V6.32.B025	DGS-1210-FX-SERIES-FX-6-32-B011.mib	N/A
V6.32.B024	DGS-1210-FX-SERIES-FX-6-32-B011.mib	N/A
V6.32.B023	DGS-1210-FX-SERIES-FX-6-32-B011.mib	N/A

V6.32.B022	DGS-1210-FX-SERIES-FX-6-32-B011.mib	N/A
V6.32.B021	DGS-1210-FX-SERIES-FX-6-32-B011.mib	N/A
V6.32.B020	DGS-1210-FX-SERIES-FX-6-32-B011.mib	N/A
V6.32.B019	DGS-1210-FX-SERIES-FX-6-32-B011.mib	N/A
V6.32.B018	DGS-1210-FX-SERIES-FX-6-32-B011.mib	N/A
V6.32.B017	DGS-1210-FX-SERIES-FX-6-32-B011.mib	N/A
V6.32.B016	DGS-1210-FX-SERIES-FX-6-32-B011.mib	N/A
V6.32.B015	DGS-1210-FX-SERIES-FX-6-32-B011.mib	N/A
V6.32.B014	DGS-1210-FX-SERIES-FX-6-32-B011.mib	N/A
V6.32.B013	DGS-1210-FX-SERIES-FX-6-32-B011.mib	N/A
V6.32.B012	DGS-1210-FX-SERIES-FX-6-32-B011.mib	N/A
V6.32.B011	DGS-1210-FX-SERIES-FX-6-32-B011.mib	N/A
V6.32.B010	DGS-1210-FX-SERIES-FX-6-31-002.mib	N/A
V6.32.B009	DGS-1210-FX-SERIES-FX-6-31-002.mib	N/A
V6.31.B039	DGS-1210-FX-SERIES-FX-6-31-002.mib	N/A
V6.31.B038	DGS-1210-FX-SERIES-FX-6-31-002.mib	N/A
V6.32.008	DGS-1210-FX-SERIES-FX-6-31-002.mib	N/A
V6.31.B037	DGS-1210-FX-SERIES-FX-6-31-002.mib	N/A
V6.31.B036	DGS-1210-FX-SERIES-FX-6-31-002.mib	N/A
V6.31.B035	DGS-1210-FX-SERIES-FX-6-31-002.mib	N/A
V6.31.B034	DGS-1210-FX-SERIES-FX-6-31-002.mib	N/A
V6.31.B033	DGS-1210-FX-SERIES-FX-6-31-002.mib	N/A
V6.31.B032	DGS-1210-FX-SERIES-FX-6-31-002.mib	N/A
V6.31.B031	DGS-1210-FX-SERIES-FX-6-31-002.mib	N/A
V6.31.B030	DGS-1210-FX-SERIES-FX-6-31-002.mib	N/A
V6.31.B006	DGS-1210-FX-SERIES-FX-6-31-002.mib	N/A
V6.31.B005	DGS-1210-FX-SERIES-FX-6-31-002.mib	N/A
V6.31.B004	DGS-1210-FX-SERIES-FX-6-31-002.mib	N/A
V6.31.B003	DGS-1210-FX-SERIES-FX-6-31-002.mib	N/A
V6.31.002	DGS-1210-FX-SERIES-FX-6-31-002.mib	N/A
V6.30.B026	DGS-1210-FX-SERIES-FX-6-30-016.mib	N/A
V6.30.B025	DGS-1210-FX-SERIES-FX-6-30-016.mib	N/A
V6.30.B024	DGS-1210-FX-SERIES-FX-6-30-016.mib	N/A
V6.30.B023	DGS-1210-FX-SERIES-FX-6-30-016.mib	N/A
V6.30.B022	DGS-1210-FX-SERIES-FX-6-30-016.mib	N/A
V6.30.B021	DGS-1210-FX-SERIES-FX-6-30-016.mib	N/A
V6.30.B020	DGS-1210-FX-SERIES-FX-6-30-016.mib	N/A
V6.30.B019	DGS-1210-FX-SERIES-FX-6-30-016.mib	N/A
V6.30.B018	DGS-1210-FX-SERIES-FX-6-30-016.mib	N/A
V6.30.B017	DGS-1210-FX-SERIES-FX-6-30-016.mib	N/A
V6.30.016	DGS-1210-FX-SERIES-FX-6-30-015.mib	N/A

V6.20.B019	DGS-1210-FX-SERIES-FX-6-20-007.mib	N/A
V6.20.B018	DGS-1210-FX-SERIES-FX-6-20-007.mib	N/A
V6.20.B017	DGS-1210-FX-SERIES-FX-6-20-007.mib	N/A
V6.20.B016	DGS-1210-FX-SERIES-FX-6-20-007.mib	N/A
V6.20.B015	DGS-1210-FX-SERIES-FX-6-20-007.mib	N/A
V6.20.B014	DGS-1210-FX-SERIES-FX-6-20-007.mib	N/A
V6.20.B013	DGS-1210-FX-SERIES-FX-6-20-007.mib	N/A
V6.20.B012	DGS-1210-FX-SERIES-FX-6-20-007.mib	N/A
V6.20.B011	DGS-1210-FX-SERIES-FX-6-20-007.mib	N/A
V6.20.B010	DGS-1210-FX-SERIES-FX-6-20-007.mib	N/A
V6.20.B009	DGS-1210-FX-SERIES-FX-6-20-007.mib	N/A
V6.20.B008	DGS-1210-FX-SERIES-FX-6-20-007.mib	N/A
V6.20.007	DGS-1210-FX-SERIES-FX-6-20-007.mib	N/A
V6.13.B003	DGS-1210-F1-SERIES-FX-6-13-B002.mib	N/A
V6.13.B002	DGS-1210-F1-SERIES-FX-6-13-B002.mib	SNTP Daylight Saving
V6.12.B008	DGS-1210-F1-SERIES-FX-6-12-B006.mib	N/A
V6.12.B007	DGS-1210-F1-SERIES-FX-6-12-B006.mib	N/A
V6.12.B006	DGS-1210-F1-SERIES-FX-6-12-B006.mib	LLDP packet forward state
V6.12.B005	DGS-1210-F1-SERIES-FX-6-12-B005.mib	Enhance SSL/TLS
V6.12.B004	DGS-1210-F1-SERIES-FX-6-12-B001.mib	N/A
V6.12.B003	DGS-1210-F1-SERIES-FX-6-12-B001.mib	N/A
V6.12.B002	DGS-1210-F1-SERIES-FX-6-12-B001.mib	N/A
V6.12.B001	DGS-1210-F1-SERIES-FX-6-12-B001.mib	SSH migration to openSSH v7.8p1
V6.11.B034	DGS-1210-F1-SERIES-FX-6-11-B031.mib	N/A
V6.11.B033	DGS-1210-FXseries-6-11-B031.mib	N/A
V6.11.B032	DGS-1210-FXseries-6-11-B031.mib	N/A
V6.11.B031	DGS-1210-FXseries-6-11-B031.mib	1. Get CPU utilization and Memory utilization by MIB 2. Change FDB aging time by web and MIB
V6.11.B030	DGS-1210-FXseries-6-00-011.mib	N/A
V6.11.B029	DGS-1210-FXseries-6-00-011.mib	N/A
V6.11.B028	DGS-1210-FXseries-6-00-011.mib	N/A
V6.11.B027	DGS-1210-FXseries-6-00-011.mib	N/A
V6.11.B026	DGS-1210-FXseries-6-00-011.mib	N/A
V6.11.B025	DGS-1210-FXseries-6-00-011.mib	N/A
V6.11.B024	DGS-1210-FXseries-6-00-011.mib	N/A
V6.11.B023	DGS-1210-FXseries-6-00-011.mib	N/A
V6.11.B022	DGS-1210-FXseries-6-00-011.mib	N/A
V6.11.B021	DGS-1210-FXseries-6-00-011.mib	N/A
V6.11.B020	DGS-1210-FXseries-6-00-011.mib	N/A
V6.11.B019	DGS-1210-FXseries-6-00-011.mib	N/A

V6.11.B018	DGS-1210-FXseries-6-00-011.mib	N/A
V6.11.B017	DGS-1210-FXseries-6-00-011.mib	N/A
V6.11.B016	DGS-1210-FXseries-6-00-011.mib	N/A
V6.11.B015	DGS-1210-FXseries-6-00-011.mib	N/A
V6.11.B014	DGS-1210-FXseries-6-00-011.mib	N/A
V6.11.B013	DGS-1210-FXseries-6-00-011.mib	N/A
V6.11.B012	DGS-1210-FXseries-6-00-011.mib	N/A
V6.10.B012	DGS-1210-FXseries-6-00-011.mib	N/A
V6.10.B011	DGS-1210-FXseries-6-00-011.mib	N/A
V6.10.B010	DGS-1210-FXseries-6-00-011.mib	N/A
V6.10.B009	DGS-1210-FXseries-6-00-011.mib	N/A
V6.10.B008	DGS-1210-FXseries-6-00-011.mib	N/A
V6.10.007	DGS-1210-FXseries-6-00-011.mib	N/A
V6.00.B024	DGS-1210-FXseries-6-00-011.mib	N/A
V6.00.B023	DGS-1210-FXseries-6-00-011.mib	N/A
V6.00.B022	DGS-1210-FXseries-6-00-011.mib	N/A
V6.00.B020	DGS-1210-FXseries-6-00-011.mib	N/A
V6.00.B019	DGS-1210-FXseries-6-00-011.mib	N/A
V6.00.B018	DGS-1210-FXseries-6-00-011.mib	N/A
V6.00.B017	DGS-1210-FXseries-6-00-011.mib	N/A
V6.00.016	DGS-1210-FXseries-6-00-011.mib	First Release

## Changes of Command Line Interface:

The section below only shows command line changes that may bring backward compatibility issues with configuration settings for previous version of firmware. Any new feature commands that do not have backward compatibility issues are not included in the below section.

Firmware Version	Changes
V6.33.004	N/A
V6.33.003	N/A
V6.33.002	N/A
V6.33.001	N/A
V6.32.B025	N/A
V6.32.B024	N/A
V6.32.B023	N/A
V6.32.B022	N/A

V6.32.B021	N/A
V6.32.B020	N/A
V6.32.B019	N/A
V6.32.B018	N/A
V6.32.B017	N/A
V6.32.B016	N/A
V6.32.B015	N/A
V6.32.B014	N/A
V6.32.B013	N/A
V6.32.B012	N/A
V6.32.B011	N/A
V6.32.B010	N/A
V6.32.B009	N/A
V6.31.B039	N/A
V6.31.B038	N/A
V6.32.008	N/A
V6.31.B037	N/A
V6.31.B036	N/A
V6.31.B035	N/A
V6.31.B034	N/A
V6.31.B033	N/A
V6.31.B032	N/A
V6.31.B031	N/A
V6.31.B030	N/A
V6.31.B006	N/A
V6.31.B005	N/A
V6.31.B004	N/A

V6.31.B003	N/A
V6.31.002	N/A
V6.30.B026	N/A
V6.30.B025	N/A
V6.30.B024	N/A
V6.30.B023	N/A
V6.30.B022	N/A
V6.30.B021	N/A
V6.30.B020	N/A
V6.30.B019	N/A
V6.30.B018	N/A
V6.30.B017	N/A
V6.30.016	N/A
V6.20.B019	N/A
V6.20.B018	N/A
V6.20.B017	N/A
V6.20.B016	N/A
V6.20.B015	N/A
V6.20.B014	N/A
V6.20.B013	N/A
V6.20.B012	N/A
V6.20.B011	N/A
V6.20.B010	N/A
V6.20.B009	N/A
V6.20.B008	N/A
V6.20.007	N/A
V6.13.B003	N/A

V6.13.B002	N/A
V6.12.B008	N/A
V6.12.B007	N/A
V6.12.B006	N/A
V6.12.B005	N/A
V6.12.B004	N/A
V6.12.B003	N/A
V6.12.B002	N/A
V6.12.B001	N/A
V6.11.B034	N/A
V6.11.B033	N/A
V6.11.B032	N/A
V6.11.B031	N/A
V6.11.B030	N/A
V6.11.B029	N/A
V6.11.B028	N/A
V6.11.B027	N/A
V6.11.B026	N/A
V6.11.B025	N/A
V6.11.B024	N/A
V6.11.B023	N/A
V6.11.B022	N/A
V6.11.B021	N/A
V6.11.B020	N/A
V6.11.B019	N/A
V6.11.B018	N/A
V6.11.B017	N/A

V6.11.B016	N/A
V6.11.B015	N/A
V6.11.B014	N/A
V6.11.B013	N/A
V6.11.B012	N/A
V6.10.B012	N/A
V6.10.B011	N/A
V6.10.B010	N/A
V6.10.B009	N/A
V6.10.B008	N/A
V6.10.007	N/A
V6.00.B024	N/A
V6.00.B023	N/A
V6.00.B022	N/A
V6.00.B020	N/A
V6.00.B019	N/A
V6.00.B018	N/A
V6.00.B017	N/A
V6.00.016	First Release

## Problem Fixed:

---

Firmware Version	Problems Fixed
V6.33.004	1. [NucliasUnity]When using multicast to discover devices form APP, the DGS-1210 (FX) responds with broadcast packet

V6.33.003	<ol style="list-style-type: none"> <li>[NucliasUnity] DUT will continuous reboot after modify port DDP setting.</li> <li>Allow Nuclias Unity modify DUT default account information.</li> </ol>
V6.33.002	<ol style="list-style-type: none"> <li>Unexpected reboots[DEUR20251023000001-South Europe]</li> <li>Support D-link Nuclias Unity.</li> </ol>
V6.33.001	<ol style="list-style-type: none"> <li>Upgrade OpenSSH from 7.8 to 10.0</li> <li>Update Smart Fan settings.</li> </ol>
V6.32.B025	<ol style="list-style-type: none"> <li>[HQ20250918000005] - 802.1X Guest VLAN with more than 30 Ports[DEUR20250917000008-Central Europe]</li> </ol>
V6.32.B024	<ol style="list-style-type: none"> <li>HQ20250505000002 [VIP_Case]IPv6 Telnet Failure Through DGS-1210[DUSA20250426000002-USA]</li> </ol>
V6.32.B023	<ol style="list-style-type: none"> <li>Vulnerabilities Detected - ICMP Timestamp Request Remote Date Disclosure[DI20250721000002-Singapore]</li> </ol>
V6.32.B022	<ol style="list-style-type: none"> <li>HQ20250624000004Trunk Links going down[IMA20250624000001-Middle East]s</li> <li>HQ20250507000001 RTSP issue DEUR20250213000003[DEUR20250506000001-South Europe]</li> </ol>
V6.32.B021	<ol style="list-style-type: none"> <li>HQ20250505000002 [VIP_Case]IPv6 Telnet Failure Through DGS-1210[DUSA20250426000002-USA]</li> </ol>
V6.32.B020	<ol style="list-style-type: none"> <li>Question about Voice VLAN[DI20250411000003-Japan] HQ20250411000004</li> </ol>
V6.32.B019	<ol style="list-style-type: none"> <li>Issue No: HQ20241008000005 Subject: 【DGS-1210-28MP Rev.F1/F4__6.31.B038】 LAG settings requires Traffic Segmentation settings disabled[DI20241007000007-Japan]</li> </ol>
V6.32.B018	<ol style="list-style-type: none"> <li>HQ20240726000007 [DGS-1210/FX/6.31] reboots every 10 days.[DI20240725000004-Japan]</li> <li>HQ20240426000006 The customer reported experiencing momentary disconnections.[relate to DGC20240426000001]</li> <li>HQ20241025000002 DNS Resolver not working.[DI20241025000001-Australia]</li> <li>HQ20241011000001 2098345 - G.Leo - Domain Ping Issue[DEUR20241009000002-South Europe]</li> </ol>
V6.32.B017	<ol style="list-style-type: none"> <li>Issue No: HQ20240806000003 Subject: syslog 日志记录问题[DGC20240805000002-China]</li> </ol>

V6.32.B016	<p>1. Issue No: HQ20240430000002 Subject: [DGS-1210-10/F1] Web GUI stop responding, after enabling ARP Spoofing Prevention.[refer to DEUR20240423000002]</p>
V6.32.B015	<p>1. Issue No: HQ202404190000004 Subject: DGS-1210-10P ver:F3 cannot connect Web UI (NTPC Project)[DGC202404190000002-Taiwan]</p>
V6.32.B014	<p>1. Issue No: HQ202406030000001 Subject: DGS-1210 HW: Fx Incorrect spelling after completing setup wizard 2. Issue No: HQ202406210000002 Subject: DGS-1210-26 time setting through the Firefox sbrowser[DRU202406200000001]</p>
V6.32.B013	<p>1. Issue No: DEUR202404100000007 Subject: DUT fail to send System log to SysLog Host Server IP Address (PC)</p>
V6.32.B012	N/A
V6.32.B011	<p>1. Issue No: HQ202401290000005 Subject: If DGS-1210/Fx and Gx do not support RADIUS accounting, can you arrange a beta FW to omit it from GUI ?</p>
V6.32.B010	<p>1. Issue No: HQ202312110000007 Subject: [DNH-100/DGS-1210] Wrong IPv4 Route Tables.[DI202312070000004-Japan]</p>
V6.32.B009	Include 6.31.B039 fixed solution
V6.31.B039	<p>1. Issue No: HQ202310120000004 Subject: [DGS-1210-52 F3 FIRMWARE:6.31B030 System log Problem report[DGC202310060000002-Taiwan]]</p>
V6.32.008	<p>1. Issue No: HQ202305150000006 DGS-1210-10P webui can not login in and manage ip can not ping issue[DGC202305150000002-Taiwan] 2. Issue No: HQ202308010000005 DGS-1210-10P remote upgrade fail by webui or remote tftp commands from 6.31B030 version issue[DGC202308010000001-Taiwan]</p>
V6.31.B038	<p>1. Issue No: HQ202311300000006 Subject: shows Cannot Set Data when Asymmetric VLAN is enabled. / Same as DI202010290000007[DI202311300000002-Japan]</p>
V6.31.B037	<p>1. Issue No: HQ202311070000006 Subject: Nuclias connect doesn't display PoE port on DGS-1210-10P[DEUR202311060000001-Eastern Europe]  3. Issue No: HQ202310300000009 Subject: Get the error 'FW upgrade/backup or config backup/restore is already progressing.</p>

V6.31.B036	<p>1. Issue No: HQ20230828000007 Subject: When adding SSL certificate to DNC-100, DGS-1210 is not provisioning[DUSA20230823000001-USA]</p>
V6.31.B035	<p>2. Issue No: HQ23230104000003 Subject: High memory Utilization[IMA20230103000001-Middle East]</p>
V6.31.B034	<p>3. Issue No: HQ20230303000005 Subject: 'SYSTEM-6:Side Fan is in high speed' in log after upgrade[DEUR20230302000006-UKI]</p>
V6.31.B033	<p>1. Issue No: HQ20220711000005 Subject: Unexpected cold start[DI20220711000002-Japan]</p> <p>2. Issue No: HQ20221003000003 Subject: It has become not respond to ARP request[DI20221003000001-Japan]</p>
V6.31.B032	<p>1. Issue No: HQ20221227000004 Subject: Slow Webgui access using SSL[IMA20221226000002-India]</p> <p>2. Issue No: HQ20221101000003 Subject: No access via Web GUI[DEUR202211017000006-UKI] [High]</p> <p>3. Issue No: HQ20221128000006 Subject: RSTP problem[DEUR20221110000007-South Europe] [High]</p>
V6.31.B031	<p>1. Issue No: HQ20220711000004 Subject: DLNA/UPnP - A config problem after firmware upgrade[DEUR20221021000005-Central Europe]</p> <p>2. Issue No: HQ20210907000003 Subject: DGS-1210-xx - switches loos sporadically WebGUI[DEUR20210906000003-Central Europe]</p> <p>3. Issue No: HQ20221103000006 Subject: Empty Nuclias Connect server address [DEUR20221103000001-South Europe]</p>
V6.31.B030	<p>1. Issue No: HQ20220711000004 Subject: VIP_Case:{reopen-HQ20220503000002}DGS-1210-10P multicast /broadcast neighbor solicitation query packet(DGC20220428000003)</p> <p>Note: 1. The learned NS entries should be empty under IPv6 link-local disable. 2. Remove ND proxy.</p> <p>1. Compatible for 6.30.x, the fw version should be increased to 6.31.B030+</p>
V6.31.B006	<p>1. Fixed following steps sometimes SN and MAC env data to default. (1) When the device save config, the power cord is unplugged. (2) When use of button relation feature, the power cord is unplugged.</p>
V6.31.B005	<p>1. Issue No: HQ20220711000004 Subject: DGS-1210-10P and SNTP issue or current design.[DRU20220630000001-Russia]</p> <p>Description: SNTP server IP cannot set to 0.0.0.0. Note: Modify remove SNTP 0.0.0.0.</p> <p>2. Issue No: HQ20220630000006</p>

	<p>Subject: Bandwidth control was not working well with UL[DGC20220630000002-Taiwan]          Description: Bandwidth control was not working well with UL.          Note: Modify bandwidth burst size config to 0xfa11.</p>
V6.31.B004	<p>Subject: POE Max issue on DGS-1210-10MP switch[IMA20220531000002-India]          Description: DGS-1210-10MP PoE chip will lock under unstable ambient voltage.          Note: (1) Add auto recover to fixed PoE59121 I2C lock issue.          (2) Add PoE sw reset button in web page.</p>
V6.31.B003	<p>Add workaround to fixed PoE59121 I2C lock issue.</p>
V6.31.002	<p>N/A.</p>
V6.30.B026	<p>1. Issue No: HQ20220325000005          Subject: [DGS-1210/F1/6.30]After port security is enabled, add learned entry to static mac then delete it from the table, device lost connection to switch.</p> <p>2. Issue No: HQ20220407000007          Subject: [DGS-1210/Fx] Confirmation of Upgrade procedure[DI20220329000002-Japan]</p>
V6.30.B025	<p>1. Issue No: DGC20211004000002          Subject: DGS-1210 cannot support "per VLAN basis" DHCP relay requests by multiple interfaces          Description: DGS-1210F1 cannot support "per VLAN basis" DHCP relay requests by multiple interfaces          Note: Modify function on DHCPv6 relay</p> <p>2. Issue No: HQ20220208000005          Subject: Switch IP ping issue[IMA20220204000002-India]          Description: A lot of NS/NA/RS/RA packets cause of ping drop</p> <p>3. Issue No: HQ20220316000004          Subject: ping drop and latency to management IP[IMA20220315000003-India]          Description: A lot of NS/NA/RS/RA packets cause of ping drop</p> <p>4. Issue No: HQ20220207000017          Subject: Ping drop to Management IP[IMA20220127000003-India]          Description: A lot of NS/NA/RS/RA packets cause of ping drop</p> <p>5. Issue No: HQ20220329000006          Subject: question about screens of surveillance mode[DI20220328000004-Japan]          Description: Web page display abnormal via surveillance mode.</p>
V6.30.B024	<p>1. Issue No: HQ20220307000008          Subject: [DGS-1210/F3/6.30] MLD Snooping doesn't work w/ Link Aggregation          Description: Use link aggregation port cannot join MLD group.</p>
V6.30.B023	<p>1. Issue No: DGC20211004000002          Subject: DGS-1210 cannot support "per VLAN basis" DHCP relay requests by multiple interfaces          Description: DGS-1210F1 cannot support "per VLAN basis" DHCP relay</p>

	<p>requests by multiple interfaces          Note: Modify function on DHCPv6 relay</p>
V6.30.B022	<p>1. Issue No: HQ20220119000001          Subject: [DGS-1210/F3/6.30] doesn't respond after receiving IGMP General Query under IGMP/MLD snooping          Description: The switch doesn't respond issue when dut receive MLD query packet.</p> <p>2. Issue No: HQ20220121000001          Subject: [DGS-1210/F3/6.30] 802.3 Extension TLV in LLDP. (MAC/PHY)          Description: Wrong port information at lldp packet.</p> <p>3. Issue No: HQ20220124000008          Subject: [DGS-1210/F3/6.30] shows Login timeout when trying update IP addr.          Description: Update ip address will put up timeout message via web.</p> <p>4. Issue No: HQ20220121000005          Subject: [DGS-1210/F3/6.30] It looks the Protocol Type in ACL Wizard in IPv6 gives wrong option          Description: Wrong pull-down menu with acl page.</p> <p>5. Issue No: HQ20220124000011          Subject: [DGS-1210/F3/6.30] doesn't shows all IPv6 local routes          Description: Web page display abnormal if setting IPv6 local routes.</p> <p>6. Issue No: HQ20220127000011          Subject: [DGS-1210/F3/6.30] Its UI corruption by downloading DSA key          Description: Web page display abnormal it DSA key file is windows format.</p> <p>7. Issue No: HQ20220128000002          Subject: [DGS-1210/F3/6.30]allows to logging w/ password auth in SSH under Auth. Mode is Publickey.          Description: SSH can't login with use multiple mode.</p>
V6.30.B021	<p>1. Issue No: HQ20220111000006          Subject: [DGS-1210/F3/6.30] shows Cannot Set Data when trying to disable Asymmetric VLAN. / Relate to DI20201029000007[DI20220111000002-Japan]          Description: Asymmetric VLAN can not be disabled if multiple interface is configured.</p>
V6.30.B020	<p>1. Issue No: DGC20211004000002          Subject: DGS-1210 cannot support "per VLAN basis" DHCP relay requests by multiple interfaces          Description: DGS-1210F1 cannot support "per VLAN basis" DHCP relay requests by multiple interfaces</p> <p>2. Issue No:          Subject:          Description: Nuclias connect server can not find switch by L3 discovery</p>
V6.30.B019	<p>1. Issue No: HQ20211014000001          Subject: Cannot use \$ symbol in password with SSH[DI20211013000006-Australia]          Description: Web page display abnormal if setting password with special character \$ from wizard</p>

	<p>2. Issue No: HQ20210928000006          Subject: IGMP snooping does NOT work[DI20210909000002-Japan]          Description: IGMP Group can not leave if leave packet with DIP=224.1.1.101</p>
V6.30.B018	<p>1. Issue No: HQ20211014000001          Subject: Cannot use \$ symbol in password with SSH[DI20211013000006-Australia]          Description: SSH can not login if changing password with special character "\$"</p>
V6.30.B017	<p>1. Issue No: HQ20211004000002          Subject: Schedule PoE[DEUR20210922000004-South Europe]          Description: Time profile might not work as setting sometime if end time is setting to 23:59</p>
V6.30.016	<p>1. Fix fan error is observed on system log after f/w upgrade.(DBG21080644)          2. Enhance fan error detection rule to reduce the possibility of wrong detection by f/w due to component spec. deviation. This enhancement will make the delay of fan error led on from 30 sec to 60 sec if fan error really happened. (DBG21080644)          3. [Nuclias connect:1.2.0.4]There is reboot behavior from DGS-1210 and continuously happens after configuration(by nuclias connect)(DBG21080750)          4. [VBG16101311] DGS-1210 series Rev.F1 does not support SNMP warm start trap.</p>
V6.20.B020	<p>1. Issue No: HQ20210908000004          Subject: Neighbor Solicitation.[DI20210830000003-Japan]          Description: The NS packet is duplicated by switch</p> <p>2. Issue No: HQ20210910000008          Subject: Refer IMA20210603000002 - Logs not overwritten[IMA20210909000001-Middle East]          Description: The logs are not overwritten after 500 entries in the switch if setting Save Mode to "Log Trigger"</p>
V6.20.B019	<p>1. Issue No:          Subject: Switch might not update IP successfully from DHCP server          Description: There are 2 DHCP servers on the network, and these two servers are not active at the same time.          Switch get IP form DHCP server 1 or server 2 by changing active server continuously. Switch might fail to update IP from server.</p>
V6.20.B018	<p>1. Issue No: HQ20210607000004          Subject: DGS-1210-52 Smart Binding problem [DRU20210604000006-Russia].          Description: The client is not displayed in the black list if client ip address is not addressed at the same ip interface with DUT.</p>
V6.20.B017	<p>1. Issue No: HQ20210519000012          Subject: [DGS-1210-28MP/F1] 'PoE power threshold' suddenly changed from 370W to 7.0W.(7.0W is not range of 'PoE power threshold.')</p> <p>Description: PoE power budget changed from 370W to 7W that 7W is not range of PoE power budget.</p>
V6.20.B016	<p>1. Issue No:          Subject: Switch still keep old gateway got from DHCP server 1 when get new IP from DHCP server 2          Description: Switch still keep old gateway got from DHCP server 1 when get new IP from DHCP server 2.</p>

V6.20.B015	<p>1. Issue No: HQ20210202000002          Subject: SNMP community not support special characters[DGC20210201000001-Taiwan]          Description: To support special character "#" on SNMP community name</p>
V6.20.B014	<p>1. Issue No: HQ20201211000008          Subject: Surveillance Mode[DEUR20201130000004-South Europe]          Description: Can not switch to Surveillance mode if changing IP address and still keeping session</p>
V6.20.B013	<p>1. Issue No: HQ20201130000008          Subject: [DGS-1210/FX/6.20] deletes an IP int and doesn't allow to add it anymore w/ Invalid Settings.          Description: IP interface would be deleted if modify ip to be same as gateway</p> <p>2. Issue No: HQ20201202000017          Subject: [DGS-1210/FX/6.20] LACP/STP get influenced by ARP entries.[DI20201130000006-Japan]          Description: LACP/STP is affected if accessing web to display 1000 ARP entry.</p> <p>3. Issue No:          Subject: PC can not ping DUT if Max. 1000 ARP entry has been learned on DUT          Description: PC can not ping DUT if Max. 1000 ARP entry has been learned on DUT</p>
V6.20.B012	<p>1. Issue No: HQ20201119000012          Subject: Failed to set the value of the mib 'portSecMLA'(1.3.6.1.4.1.171.11.153.1000.14.2.1.1.3) to 0          Description: Failed to set the value of the mib 'portSecMLA'(1.3.6.1.4.1.171.11.153.1000.14.2.1.1.3) to 0</p> <p>2. Issue No: HQ20201124000005          Subject: [DGS-1210/FX/6.20] Power Saving / relate to DI20201029000012          Description: Port Shut-off time activity does not work if changing time profile linking by deleting/adding profile.</p> <p>3. Issue No: HQ20201124000008          Subject: [DGS-1210/FX/6.20] rebooting loop after adding IPv6 addr. / relate to DI20201028000008[DI20201124000001-Japan]          Description: Switch reboot loop after adding IPv6 address &amp; save</p>
V6.20.B011	<p>1. Issue No: HQ20201028000008          Subject: [DGS-1210/FX/6.20] doesn't check IP confliction in case of modification via System Settings.[DI20201028000009-Japan]          Description: Switch does not check IP conflict if modification from system settings.</p> <p>2. Issue No: HQ20201030000005          Subject: [DGS-1210/FX/6.20] is always enabled Jumbo Frame.[DI20201029000001-Japan]          Description: Jumbo frame still pass through switch even when Jumbo frame function is disabled.</p> <p>3. Issue No: HQ20201029000001          Subject: [DGS-1210/FX/6.20] reboots after adding IPv6 addr.[DI20201028000008-Japan]          Description: Switch reboot after adding IPv6 address</p>

	<p>4. Issue No: HQ20201029000011          Subject: [DGS-1100/FX/6.20] reboots when Port Shut-off time activates.[DI20201029000011-Japan]          Description: Device reboot when trying to overwrite existed time profile setting</p> <p>5. Issue No: HQ20201029000012          Subject: [DGS-1100/FX/6.20] reboots when Port Shut-off time activates w/ empty time profile.[DI20201029000012-Japan]          Description: Device reboot when Port Shut-off time activates w/ empty time profile</p> <p>6. Issue No: HQ20201029000006          Subject: [DGS-1210/FX/6.20] shows Cannot Set Data when Asymmetric VLAN is enabled.[DI20201029000007-Japan]          Description:</p> <p>7. Issue No: HQ20201029000010          Subject: [DGS-1210/FX/6.20] doesn't allow to establish any telnet/ssh session after ena/dis ssh.[DI20201029000002-Japan]          Description: Device does not allow to establish telnet/ssh session after enable/disable ssh</p> <p>8. Issue No:          Subject: Web page might display ARP table abnormally if sending over 1000 ARP entry to switch.          Description: Web page might display ARP table abnormally if sending over 1000 ARP entry to switch.</p> <p>9. Issue No:          Subject: Telnet can not log in sometimes after boot up          Description: Telnet can not log in sometimes after boot up</p> <p>10. Issue No: HQ20201026000003          Subject: [DGS-1210/FX/6.20] loses default route by deleting an ip interface.[DI20201023000007-Japan]          Description: It might loses default route if deleting an ip interface.</p> <p>11. Issue No: HQ20201028000006          Subject: DGS-1210 multicast filtering and PIM issue[DRU20201020000004-Russia]          Description: PIM can not pass through if Igmp snooping is enabled.</p>
<p>V6.20.B010</p>	<p>1. Issue No:          Subject: DGS-1210-28 security issue DoS vulnerability          Description: Device Login page is vulnerable against DoS attack.</p>
<p>V6.20.B009</p>	<p>1. Issue No: HQ20200713000006          Subject: DGS-1210-xx F-Rev - issue with VRRP/HSRP Gateway [DEUR20200709000002-Central Europe]          Description: Switch can't be accessed remotely when using the VRRP/HSRP Gateway IP Address</p> <p>2. Issue No: HQ20200729000012          Subject: DGS-1210-28P - issue with routing functionality [DEUR20200728000003-Central Europe]          Description: static route does not work normally if asymmetric vlan is enabled.</p>

V6.20.B008	<p>1. Issue No: HQ20200701000005          Subject: SSL Certificate Cannot Be Trusted          [DI20200624000009-Singapore]          Description: Switch reboot if using nessus for security scan</p>
V6.20.007	<p>1. Voice vlan dynamic port can not age out          2. Voice vlan dynamic port can not ping each other.          3. ASV dynamic port can not age out          4. ASV dynamic port can not ping each other.          5. Port security does not work normally if static route is enabled.          6. DHCPv6 relay might not work normal.          7. DHCPv6 local relay might not work normal if IMPB DHCP snooping is enabled.          8. Device with Ipv6 address might not be added into white list if DHCP snooping is enabled.          9. Enhance system to avoid crash if malicious packet attacked.          10. Disable weaker cipher algorithm on SSL/TLS by default to enhance security.          11. Some IGMP/MLD snooping behaviour does not meet D-Link test requirement.          12. Static route does not work normal under some D-Lab test case.          13. ACL can not deny packets by ToS          14. Telnet does not work if crossing ip interface.</p>
V6.13.B003	<p>1. Issue No: HQ20200608000005          Subject: DGS-1210-xx - issue with disabling VLAN 1 IP Interface[DEUR20200605000004-Central Europe]          Description: Disable vlan 1 IP interface, then saved. But it's still enabled after reboot.</p>
V6.13.B002	N/A
V6.12.B008	<p>1. Issue No: HQ20200227000009          Subject: aggregation doesn't work along with voice Vlan          [DEUR20200226000004-Eastern Europe]          Description: Ping failed from voice vlan dynamic port to another device going through trunk port.</p> <p>2. Issue No: HQ20200130000017          Subject: Auto-surveillance VLAN feature a          [DEUR20200129000001-UKI]          Description: IPC sometime get ip from dhcp server going through default VLAN instead of ASV vlan.</p>
V6.12.B007	<p>1. Issue No: HQ20191203000003          Subject: DGS-1210 Issue with displaying IP Interface          [DRU20191202000002-Russia]          Description: IP address is not displayed completely</p>
V6.12.B006	<p>1. Issue No: HQ20191118000008          Subject: DGS-1210-28 F1 - issue with config and firmwareupdate          [DEUR20191115000001-Central Europe]          Description: Bandwidth control Tx/Rx rate setting is gone if f/w upgrade from 6.10.xx to 6.11.xx</p>
V6.12.B005	<p>1. Issue No: HQ20191001000001          Subject: DGS-1210 Issue with management lost          [DRU20190930000004-Russia]          Description: PC can not access switch if PC's MAC address is set to switch FDB as static entry, then PC re-plug in again and disable auto-learn on that port.</p>

V6.12.B004	<p>1. Issue No: HQ20191001000001 Subject: DGS-1210 Issue with management lost [DRU20190930000004-Russia] Description: PC can not access switch if PC's MAC address is set to switch FDB as static entry (only impacted DGS-1210-52/52MP)</p> <p>2. Issue No: HQ20191014000004 Subject : DGS-1210 PD-Alive Description: PD-Alive can not be enabled over 10 port.</p>
V6.12.B003	<p>1. Issue No: HQ20190924000008 Subject: How to setup intervlan routing between vlans using static routes [DUSA20190924000001-USA] Description: Due to improper range check, IPv4 address and Gateway can not be set from "Static Route Setting" web page.</p> <p>2. Issue No: HQ20190826000011 Subject : PoE time scheduling issue.[DI20190821000003-Korea] Description: PD Device reboot once before target schedule if PoE time profile is set with over night.</p>
V6.12.B002	<p>1. Issue No: HQ20190826000011</p> <p>Subject: PoE time scheduling issue.[DI20190821000003-Korea]</p> <p>Description: PD Device reboot once at 00:00 if PoE time profile is set with overnight.</p>
V6.12.B001	<p>1. Issue No: HQ20170518000019 Subject: [Urgent] SSH version upgrade or patch [IMA20170518000001-Africa]</p> <p>2. Issue No: HQ20190319000011 Subject: [Medium] Can't connect through SSH on OpenSSH 7.6 [DEUR20190319000001-Eastern Europe].</p>
V6.11.B034	<p>1. Issue No: HQ20190821000005</p> <p>Subject: DGS-1210 Issue with change Gateway[DRU20190820000002-Russia]</p> <p>Description: Change gateway from web page and saved the setting. But after reboot, gateway is not saved.</p> <p>4. Issue No: HQ20190625000003 Subject: DGS-1210-10MP dhcp client mode issue[DRU20190624000002-Russia]</p>
V6.11.B033	N/A
V6.11.B032	<p>1. Issue No: HQ20190716000008 Subject: [DGS-1210/F1/6.11] JP UI / relate to</p>

	<p>DI20180320000007[DI20190716000002-Japan]          Description: Fix some wording for Japanese multi-language</p> <p>2. Issue No: HQ20190704000007          Subject: Bandwidth control issue.[IMA20190623000001-Middle East]          Description: Bandwidth control is not stable on DGS-1210-52.</p> <p>3. Issue No: HQ20190724000006          Subject: DGS-1210-28P rev F. issue with LBD + STP[DRU20190723000003-Russia]          Description: It shows error when enable STP on the condition that LBD is enabled globally with all port is disabled.</p>
V6.11.B031	<p>1. Issue No: N/A          Subject: LACP failed if STP is enabled          Description: LACP failed if STP is enabled.          This issue only happened on f/w 6.11.B030.</p>
V6.11.B030	<p>1. Issue No: HQ20190522000004          Subject: LBD does not work[DI20190522000003-Japan]          Description: BPDU packet still loop under LBD vlan based mode.</p>
V6.11.B029	<p>1. Issue No: HQ20190513000007          Fixed the issue for Fan turning speed cause loud sound[DI20190513000005-Singapore].</p>
V6.11.B028	<p>1. Issue No: HQ20190411000006          Subject: DGS-1210-52 F1 issue with Bandwidth Control and reboot[DRU20190410000002-Russia]          Description: DGS-1210-52 reboot if setting bandwidth control function</p>
V6.11.B027	<p>1. Issue No: HQ20190327000011          Subject: DGS-1210-52 issue with terminal window size[DRU20190326000003-Russia]          Description: Switch reboot if login by telnet with terminal window size hight=31.</p>
V6.11.B026	<p>1. Issue No: HQ20190215000009          Subject: DGS-1210-xx - STP can't be enabled, when WebGUI = GERMAN[DEUR20190215000001-Central Europe]          Description: STP can not be enabled if log in with german language. Besides, "Save Config" is translated to wrong german language.</p>
V6.11.B025	<p>1. Issue No: HQ20180515000007          Subject: DGS-1210 rev.F1 management loss [DRU20180514000002-Russia]          Description: Switch loss management.          It failed to access switch by Ping or web.</p>
V6.11.B024	<p>1. Issue No: HQ20180111000003          Subject: DGS-1210-10P F1 issue with DGS-712 E1[DRU20180109000001-Russia]          Description: Fiber port is not able to link up if using transceiver DGS-712 E1/F1.</p>
V6.11.B023	<p>1. Issue No: HQ20180827000011          Subject: Issue with QOS bandwidth.[DUSA20180801000003-Canada]          Description: The bandwidth control Tx/Rx rate does not work as setting if test by speed test utility. The deviation is too large and unstable.</p>
V6.11.B022	<p>1. Issue No: HQ20180921000006          Subject: DGS-1210-52 issue with default gateway issue [DRU20180920000002-Russia]          Description: Switch might not reply and transmit packet to gateway as configured by Static Route setting.          It might casued Ping failed if PING is not in the same IP interface.</p>

	<p>2. Issue No: HQ20181002000004          Subject: DGS-1210-10MP F1 default gateway issue [DRU20181002000002-Russia]          Description: After DUT got ip address, it ping DHCP Server and try to resolve not default gateway address, but address from giaddr field, relay agent ip address. So, DUT can't access any host outside it's network</p> <p>3. Issue No: HQ20181009000013          Subject: http and telnet access to management ip address fails via different network segment. [DI20181005000005-Japan]          Description: http and telnet access to management ip address fails via different network segment</p> <p>4. Issue No: HQ20181023000006          Subject: DGS-1210 F1 doesn't check client's mac in dhcp packets from server [DRU20181022000001-Russia]          Description: DGS-1210 F1 doesn't check client's mac address field in DHCP OFFER/ACK packets, it checks only Transaction ID.          Every 3-4 reboots switches sends the same sequence of transaction ID, and if we turn on several switches at one time, some of them get ip address for another switch.</p>
V6.11.B021	<p>1. Issue No: HQ20180612000008          Subject: DGS-1210 revF management (ICMP) issues [DEUR20180601000002-South Europe]          Description: Ping failed form link partner switch to DGS-1210 if changing LA from static mode to LACP mode.</p>
V6.11.B020	<p>1. Issue No: HQ20180710000007          Subject: DGS-1210-52 issuw with duplicating ping reply [DRU20180709000001-Russia]          Description: DGS-1210-52 duplicate ping reply</p>
V6.11.B019	<p>1. Issue No: HQ20180517000012          Subject: Multiple Problem report [DI20180508000008-Singapore]          Description: The gateway setting is reset to 0.0.0.0 after enable ASV mode.</p>
V6.11.B018	<p>1. Issue No: HQ20180611000004          Subject: DGS-1210 rev.F1 stp and lbd settings conflict [DRU20180608000002-Russia]          Description: if globally enable stp &amp; lbd, stp becomes disabled after reboot.</p>
V6.11.B017	<p>1. Issue No: HQ20180530000015          Subject: DGS-1210-52 issue with inter-vlan routing [DRU20180529000003-Russia]          Description: switch send "ICMP Redirect" packet when pc1 ping pc2 with inter-vlan routing</p>
V6.11.B016	<p>1. Issue No: HQ20180517000001          Subject: Unreadable error message in DGS-1210-28 web interface [DUSA20180516000005-USA]          Description: Get an error prompted from Power Saving Settings page after an attempt to enable "LED Shut-Off" on one port</p>
V6.11.B015	<p>1. Issue No: HQ20180425000020          Subject: Default Priority setting does not apply for ingress untagged packets [DI20180425000010-Japan]          Description: The 802.1p priority setting is not added to untagged packets as setting expected.</p> <p>2. Issue No: HQ20180412000003          Subject: DGS-1210-xx G-Rev -Issue with DHCP &amp;</p>

	<p>VoiceVLAN[DEUR20180406000006-Central Europe]          Description: Switch don't get IP from DHCP server via voice VLAN as expected, but get IP via default vlan.          3. Issue No: HQ20180425000019          Subject: It adds unneeded VLAN tag to mirror packets[DI20180425000008-Japan]</p>
V6.11.B014	<p>1. Issue No: HQ20180327000002          Subject: IP Port Smart Binding cannot work with Asymmetric VLAN[DI20180326000002-Singapore]          Description: IMPB black list entry is not kept blocked if switching to Asymmetric VLAN.</p>
V6.11.B013	<p>1. Issue No: HQ20180222000006          Subject: DGS-1210 F1 issue with voice vlan[DRU20180221000002-Russia]          Description: Devices in static VLAN and voice vlan are unavailable to ping to each other          2. Issue No: HQ20180110000006          Subject: DGS-1210-28 losses pings to their management ips for several minutes[DEUR20171218000004-Central Europe]          Description: The switches losses pings to their management ips for several minutes. This issue occurs not regularly, sometime once a day, something multiple time, sometime not at all.          3. Issue No: HQ20180227000009          Subject: voice vlan with trunk uplink[IMA20180225000001-Middle East]          Description: CISCO IP Phone 7962 can not get IP from DHCP server if connect to Voice Vlan Dynamic port.          4. issue No: HQ20180319000002          Subject: Static MAC settings[DLA20180316000001-Latin America]          Description: Static MAC function does not work correctly.</p>
V6.11.B012	<p>1. Forward multicast traffic 01:00:5e:00:00:00 (224.0.0.0) ~ 01:00:5e:00:00:ff (224.0.0.255) even multicast filtering is enabled. (DHQ requested)</p>
V6.10.B012	<p>1. Issue No: HQ20171117000011          Subject: DGS-1210-10P LLDP for PoE/PoE+ DLL classification and power allocation[DEUR20171115000006-Central Europe]          Description: Fix 3 LLDP issues as below (there are 5 issue reported, but item a &amp; b are not bug, so leave it)              (c)always sends PSE MDI power state = disabled(0)              (d)send Power class = 0, which is an invalid value              (e)may send a stale (non-zero) PD requested power value and PSE allocated power value when it no longer supplies power</p> <p>2. Issue No: HQ20171228000002          Subject: DGS-1210-Series issue with IPv6 &amp; Log[DEUR20171213000003-Central Europe]          Description: Wrong IPv6 address is shown in syslog message when auto logout</p> <p>3. Issue No: HQ20171225000006          Subject: [DGS-1210/C1/F1] doesn't respond to Syn after 3way x 2,000 / relate to DI20171110000003[DI20171221000008-Japan]          Description: DUT become no response to Syn after TCP 3way handshake 2000 times.</p> <p>4. Fix the issue that wrong port information is displayed on console while typing "debug info" by telnet.</p>

V6.10.B011	<p>[HQ20171220000009] DGS-1210 F1 Series Loopback detection behavior does not fit D-Link LBD v0.43 request, that request DUT need to confirm receive CTP interface LBD state enable/disable first.</p> <p>When DGS-1210 F1 receive CTP interface LBD state enable, the DUT just block this receive interface by LBD function.</p> <p>When DGS-1210 F1 receive CTP interface LBD state disable, the DUT will block sender CTP interface by LBD function.</p>
V6.10.B010	<p>1. HQ20170802000016 [DGS-1210/F1] Cable Length (meters)[DI20170802000007-Japan]</p> <p>--Fix notice wording (English &amp; Japanese) on cable diagnostic web page as required.</p>
V6.10.B009	<p>1. 53602: When we change boot up image ID first then execute SSL web page firmware upgrade, the DUT will no reply after upgrade finish.</p> <p>2. 53713: [Auto Test] The DUT enable SSL/TLS and execute firmware upgrade 2 times, the DUT will no reply.</p> <p>3. Cablediag Multi-language</p>
V6.10.B008	<p>1. Issue No:HQ20171003000003 DGS-1210-52 issue with SNMP[DRU20171002000004-Russia] (fixed in 6.00.B026)</p> <p>2. Issue No:HQ20171108000018 DGS-1210 F1 issue with localization[DRU20171108000002-Russia] (fixed in 6.00.B027)</p> <p>3. Modify notice wording on Cable Diagnostic web page.</p> <p>4. NTP setting return incorrect value to DNA utility.</p> <p>5. User setting is always updated to config-1 by DNA utility. It should be updated to current boot-up config instead of config-1 all the way.</p> <p>6. Issue No: DI20171110000003 It does not response to HTTP and SSH(fixed TCP abnormal handling issue)</p>
V6.10.007	<p>1. [VBG17010055]LLDP Protocol Identity parameter is not correct at lldp packet. Ex: set all Protocol Identity -&gt; unknown protocol</p>
V6.00.B025	<p>1. Issue No: HQ20171018000010 Special character issue in System name[IMA20171017000005- India]</p> <p>2.Issue No: HQ20170801000012 [DGS-1210/F1] won't send arp/icmp after link down/up.[DI20170728000010-Japan]</p>
V6.00.B024	<p>1. Issue No: HQ20171003000003 DGS-1210-52 issue with SNMP[DRU20171002000004-Russia]</p>
V6.00.B023	<p>1. Issue ID: HQ20170825000004 [DGS-1210/F1] Japanese UI Translation[DI20170825000001-Japan]</p> <p>2. Issue ID: HQ20170801000012 [DGS-1210/F1] won't send arp/icmp after link down/up.[DI20170728000010-Japan](It's not fixed completely)</p>
V6.00.B022	<p>D-Link update whole Japanese Translation wording.</p>
V6.00.B020	<p>1. HQ20170804000002 [DGS-1210/F1] ipv4</p>

	<p>route[DI20170802000001-Japan]</p> <ol style="list-style-type: none"> <li>2. HQ20170728000016 How can we save logs "On Demand?"</li> <li>3. HQ20170803000021 [DGS-1210/F1] filters PIM IPv6 Bootstrap under Filter Unregister Group.[DI20170802000009-Japan]</li> <li>4. HQ20170803000020 PIM Bootstrap packet was filtered</li> <li>5. HQ20170801000009 [DGS-1210/F1] for what about IPv6 Neighbor Settings</li> <li>6. HQ20170803000022 [DGS-1210/F1] doesn't respond for IPv6.[DI20170802000005-Japan]</li> <li>7. HQ20170802000014 [DGS-1210/F1] crashes by https access via IPv6.[DI20170801000005-Japan]</li> <li>8. HQ20170728000015 [DGS-1210/F1] doesn't allow to add IPv6 neighbor.[DI20170728000007-Japan]</li> <li>9. HQ20170728000010 [DGS-1210/F1] Sanitizing for input tag[DI20170728000008-Japan]</li> <li>10. HQ20170801000012 [DGS-1210/F1] won't send arp/icmp after link down/up.[DI20170728000010-Japan] (It's not fixed completely)</li> <li>11. HQ20170728000009 [DGS-1210/F1] doesn't maintain ipv6 by Reset function.[DI20170728000005-Japan]</li> <li>12. HQ20170808000007 [DGS-1210/F1] Topology changed while showing FDB.[DI20170803000005-Japan]</li> <li>1.13. HQ20170802000015 [DGS-1210F1] doesn't accept network address.[DI20170802000010-Japan]</li> </ol>
V6.00.B019	<ol style="list-style-type: none"> <li>1. Issue No: HQ20170703000009</li> </ol> <p>Some problems with DGS-1210 SERIES[DGC20170703000005-China]</p>
V6.00.B018	<ol style="list-style-type: none"> <li>1. Fix DRU20170602000003-Russia set Voice Vlan Mode error</li> <li>2. HQ20170602000021 ASV 2.0 unable to fully recognize onvif packet in fragment.</li> </ol>
V6.00.B017	<ol style="list-style-type: none"> <li>1. Fix HQ20170503000007 SOID duplicated with DGS-1210-52</li> </ol>
V6.00.016	First Release

\* D-Link tracking number is enclosed in ( )

## Known Issues:

Firmware Version	Issues	Workaround
V6.00.017~ V6.33.004	<p><b>Limitation:</b></p> <p>1. [VBG16120039] MAC_Address_Collision_Test_1K~16K_Random_MAC_Addresses test. DGS-1210 series Rev.F1 mac address learning lose rate over 1%. DGS-1210-10/10P/10MP/20/26/28/28P/28MP forwarding table support maximum size is 8K, only DGS-1210-52/52MP is support 16K. DGS-1210-28/28P/28MP/26/10/10P/10MP/20(3K:2960,4K:3865,5K:4681,6K:5393,7K:6055,8K:6552) DGS-1210-52/52MP(6K:5898,7K:6859,8K:7334,9K:8536,10K:9361,11K:10080,12K:10689,13K:11411,14K:11976,15K:12501,16K:13074)</p> <p>2.BG17010021] DGS-1210 Rev.F1 CPU interface does not support Jumbo Frame.</p> <p>3. [VBG17010043] When enable/disable EEE, the DUT interface will link down/up</p> <p>4. [VBG17030260] The DUT firmware upgrade to stable state will over Chrome DNA v3.0.2.7 wait time and cannot display upgrade result. DNA 2.0.2.4 install version does not exist this issue.</p> <p>Firmware upgrade does valid, just over Chrome DNA Utility waiting time.</p> <p>5. [VBG17030261] The DUT SFP interface does not support in loader mode.</p> <p>6. [VBG17030262] IPC PD connect to DUT, after DUT reboot it will lose IPC first hello packet it caused DUT cannot detect IPC device; it should be complete reboot program then enable POE.</p>	None

## Related Documentation:

- DGS-1210 SERIES Series User Manual
- DGS-1210 SERIES Series Getting Started Guide