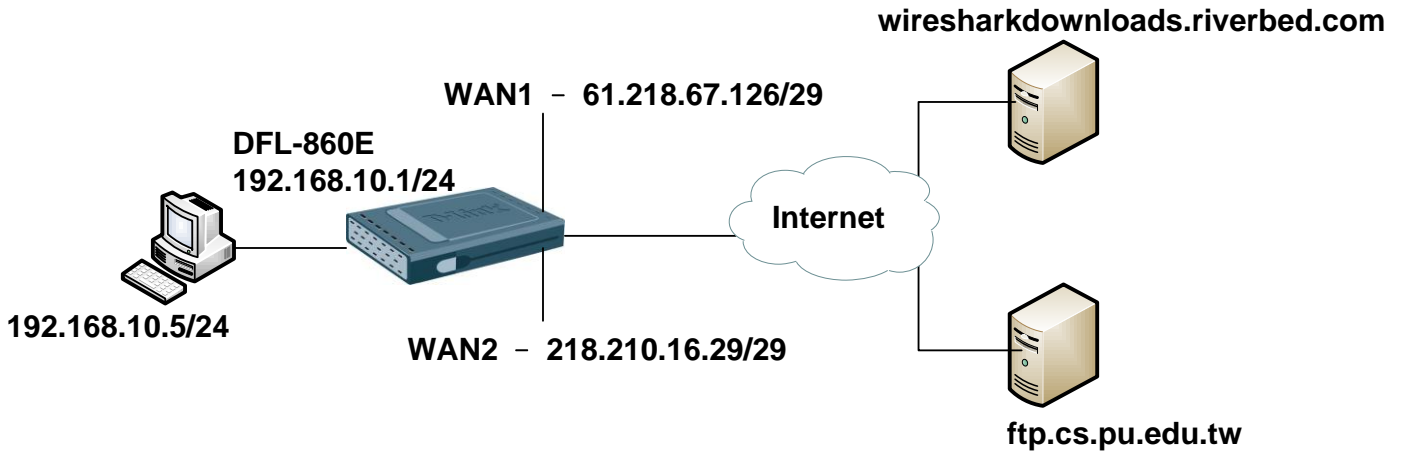


How to set up Spillover feature with DFL firewall

[Topology]



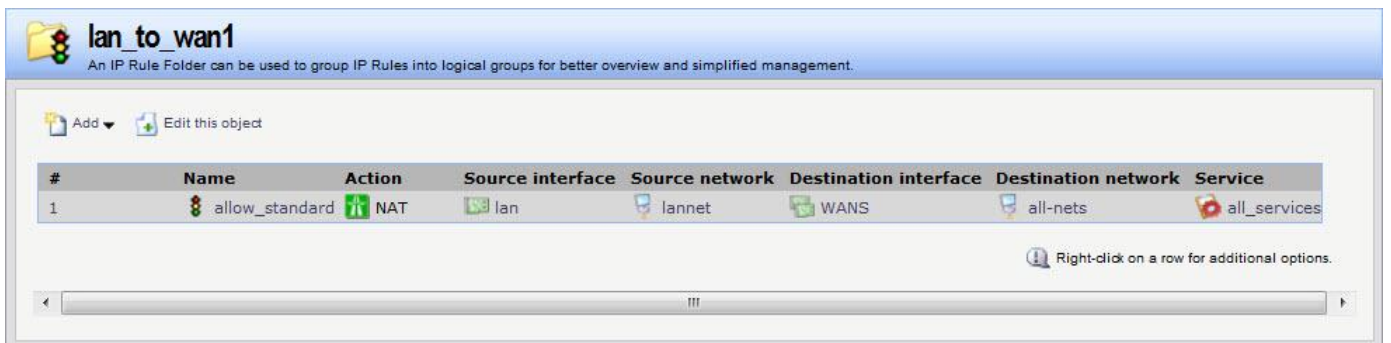
[DFL-860E Setup]

1. Interfaces > Interface Groups



2. Rules > IP Rules

Setting all services (Because all service in could web and ftp)



3. Routing Tables > Main

There two WAN ports on the firewall. It must change routing metric make load balancing trigger.



main
The system has a predefined main routing table. Alternate routing tables can be defined by the user.

Add Edit this object

#	Type	Interface	Network	Gateway	Local IP address	Metric	Monitor this route	Comments
1	Route	wan1	wan1net			90	No	Direct route for network wan1net over interface wa...
2	Route	wan1	all-nets	wan1_gw		90	No	Default route over interface wan1.
3	Route	wan2	wan2net			100	No	Direct route for network wan2net over interface wa...
4	Route	wan2	all-nets	wan2_gw		100	No	Default route over interface wan2.
5	Route	dmz	dmznet			100	No	Direct route for network dmznet over interface dmz...
6	Route	lan	lannet			100	No	Direct route for network lannet over interface lan...

Right-click on a row for additional options.

4. Routing > Route Load Balancing > Instances

Instances
A route balancing instance is associated with a routingtable and defines how to make use of multiple routes to the same destination.

Add

#	RoutingTable	Algorithm
1	main	Spillover

Right-click on a row for additional options.

5. Routing > Route Load Balancing > Algorithm Settings

Algorithm Settings
The Algorithm settings are used to set the global options associated with a specific algorithm.

Add

#	Interface	Hold-time	Outbound threshold	Inbound threshold
1	wan1	5s	10kbps	10kbps

Right-click on a row for additional options.

[Test]

1. Check the test download URL IP.

wiresharkdownloads.riverbed.com 69.4.231.52

ftp.cs.pu.edu.tw 140.128.9.18

```
> wiresharkdownloads.riverbed.com
Server: google-public-dns-a.google.com
Address: 8.8.8.8

Non-authoritative answer:
Name: wiresharkdownloads.riverbed.com
Address: 69.4.231.52

> ftp.cs.pu.edu.tw
Server: google-public-dns-a.google.com
Address: 8.8.8.8

Non-authoritative answer:
Name: ftp.cs.pu.edu.tw
Address: 140.128.9.18
```

2. Use `-num=XXX` this parameter can show more numbers connections list.

```
DFL-860E:/> connections -show -verbose -num=100
State      Proto  Source                               Destination                               Tmout
-----
TCP_OPEN   TCP    lan:192.168.10.5:56117               wan1:66.35.62.166:80                     36
...term:   lan:61.218.67.126:14455               wan1:66.35.62.166:80                     36
FIN_RCVD   TCP    lan:192.168.10.5:56146               wan2:32.60.13.244:80                     68
...term:   lan:218.210.16.29:47607               wan2:32.60.13.244:80                     68
```

3. Start download and check the connections list.

```
TCP_OPEN   TCP    lan:192.168.10.5:56133               wan2:69.4.231.52:80                     262100
...term:   lan:218.210.16.29:35553               wan2:69.4.231.52:80                     16
TCP_OPEN   TCP    lan:192.168.10.5:56134               wan2:69.4.231.52:80                     262144
...term:   lan:218.210.16.29:65202               wan2:69.4.231.52:80                     262144
TCP_OPEN   TCP    lan:192.168.10.5:56128               wan1:140.128.9.18:80                    262084
...term:   lan:61.218.67.126:62181               wan1:140.128.9.18:80                    0
TCP_OPEN   TCP    lan:192.168.10.5:56129               wan1:140.128.9.18:80                    262144
...term:   lan:61.218.67.126:8558               wan1:140.128.9.18:80                    262144
```

END