

D-Link[®]
Building Networks for People

UTM FIREWALL REGISTRATION & ACTIVATION MANUAL

DFL-260/ 860/ 1660/
2560/ 2560G

VER 2.00



NETWORK SECURITY SOLUTION <http://security.dlink.com.tw>

D NETDEFEND

1.Introduction.....	02
2.Apply for a D-Link Membership.....	03
3.D-Link NetDefend UTM Subscription.....	08
4.Activate your update service of UTM firewall.....	10
5.Extend your NetDefend UTM Update Service.....	13

D-Link NetDefend UTM firewalls DFL-260/860/1660/2560/2560G integrate Intrusion Prevention System, gateway Anti-Virus and Web Content Filtering, for improving Layer 7 content inspection performance, D-Link adopt hardware acceleration technology to increase IPS and AV throughput, and web surfing control database contains millions of URLs for Web Content Filtering. IPS, Anti-Virus and URL database real-time update service to protect your enterprise network from application exploits, network worms, malicious code attacks and management employees Internet access behavior. Three database of UTM firewall should be kept up to date against a variety of threats from the Internet. Today D-Link delivers NetDefend UTM Subscription, including NetDefend IPS, Anti-Virus and WCF update services individually; to ensure your UTM firewall's service database is accurate and up-to-date

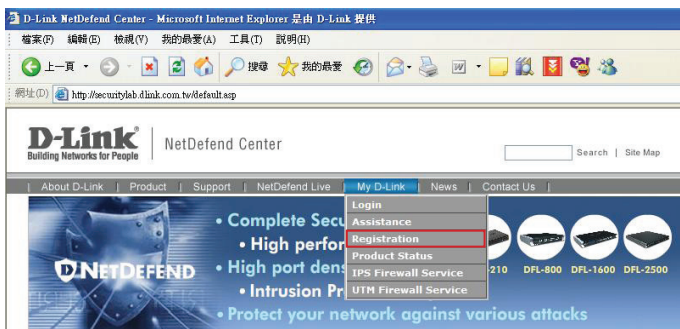
Apply for a D-Link Membership 2

You need to visit D-Link NetDefend Security Portal, which provides a registration platform and abundant professional security resources to customers,

1. Please launch your browser and input the following URL:
<http://security.dlink.com.tw>.



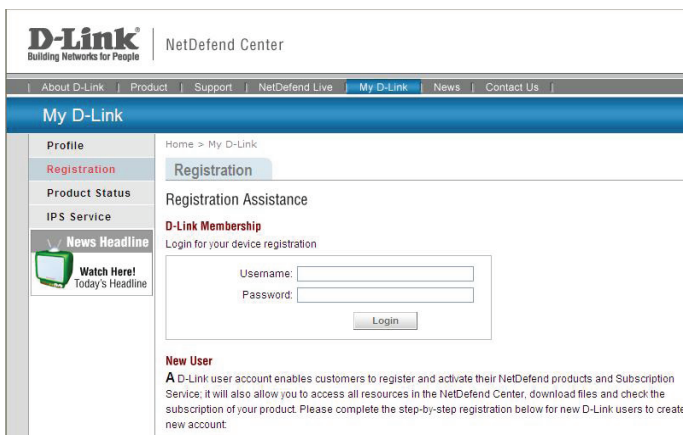
2. Go to “My D-Link” in the menu bar, and click “Registration” from the pull down menu.



3. For security concern, your information provided in “My D-Link” is protected by HTTPS communication, and please click “Yes” to trust the D-Link certificate.



4. If you are already a D-Link member, and you want to register another firewall product, please input your username and password, then logon “My D-Link” directly.



5.If you are new to “My D-Link”, please comprehend the registration information for My D-Link membership by following the steps below:

Step 1: Provide Login Information, User Profile and Company Profile. Please make sure you fill in the correct information for your membership.

New User

A D-Link user account enables customers to register and activate their NetDefend products and Subscription Service; it will also allow you to access all resources in the NetDefend Center, download files and check the subscription of your product. Please complete the step-by-step registration below for new D-Link users to create a new account.

Step 1 Account Creation ➡ **Step 2** Product Registration ➡ **Step 3** Confirmation

Step 1

Login Information:

*Username:

*Password: (must be between 6 and 24 characters)

*Confirm Password:

User Profile:

*First Name:

*Last Name:

*E-mail:

Phone Number:

Fax Number:

Job Title:

Company Profile:

*Company/Organization:

Employee:

Step 2: Please fill in the MAC address and Serial Number of your appliance. To find the information, you can check the label at the bottom of the appliance.

The screenshot shows the 'My D-Link' website interface. The navigation bar includes links for 'About D-Link', 'Product', 'Support', 'NetDefend Live', 'My D-Link', 'News', and 'Contact Us'. The main header is 'My D-Link'. On the left sidebar, there are sections for 'Login', 'Login Assistance', 'Registration' (highlighted), 'Product Status', and 'News Headline' with a 'Watch Here! Today's Headline' button. The main content area is titled 'Registration' and 'Registration Assistance'. Below this, it says 'New User' and provides instructions: 'If have not registered your product, you can still create an account for yourself. The serial number and MAC address of your device are printed on the sticker placed on your device.' A progress bar shows three steps: 'Step 1 Account Creation', 'Step 2 Product Registration' (highlighted in red), and 'Step 3 Confirmation'. Below the progress bar, the 'Step 2' section is titled 'Product Information:' and contains the following fields:

- Device Alias: NetDefend Firewall
- *Purchase Date: 2006-4-11
- *Serial Number: 8523161111111
- *MAC Address: f1233463D96C8
- Distributor VAR: D-Link

 At the bottom of the form are 'Back' and 'Next' buttons.

Step 3: Please make sure you provide the correct information before submitting your registration.

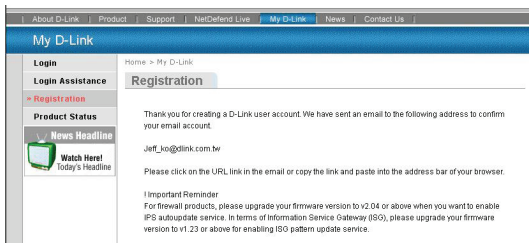
The screenshot shows the 'My D-Link' website interface, now at 'Step 3 Confirmation'. The left sidebar is similar to the previous step, with 'Registration' highlighted. The main content area is titled 'Registration' and 'Registration Assistance'. A progress bar shows three steps: 'Step 1 Account Creation', 'Step 2 Product Registration', and 'Step 3 Confirmation' (highlighted in red). Below the progress bar, the 'Step 3' section is titled 'User Profile:' and contains the following information:

- *First Name: Jeff
- *Last Name: Ko
- *E-mail: jeff_ko@dlink.com.tw
- Phone Number: 886-2-66000123
- Fax Number: 886-2-55509988
- Job Title: Engineer

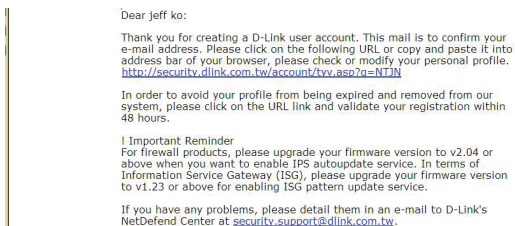
 Below this is the 'Company Profile:' section with the following information:

- *Company/Organization: D-Link
- Employees: 300+
- *Address: No 289 Sinhu 3rd Ed., Neihs District, Taipei City 114, Taiwan, R.O.C
- *Country: Taiwan
- *City: Taipei
- State/Province: Taipei
- Postal Code: 114

7. After you complete the registration, you will receive an email from D-Link NetDefend Center for membership confirmation.



8. Check your mailbox to see if you received the confirmation email. When you receive the email, please confirm your membership within 48 hours simply by clicking the URL link provided in the mail.



9. After the confirmation, you can check and review your registered Product Status anytime via NetDefend Security Portal.



D-Link NetDefend UTM Subscription

3

The standard NetDefend UTM (Unified Threat Management) Subscription provides your security device with UTM services for 12-months starting from the day you activate or extend your service. Your NetDefend UTM Subscription should be renewed regularly to provide your security device with important updates and your network with the most up-to-date security service available from D-Link.

NetDefend UTM Subscription includes 3 optional services, IPS, Anti-Virus and Web Content Filtering. Customer can purchase either one of the 3 or any service combination.

D-Link NetDefend IPS Subscription

D-Link adopts the unique technology - Component-based signatures, which are built to recognize and protect against all varieties of known and unknown attacks, and address several aspects of an attack including payload, NOP sled, infection, exploit and more. In terms of signature coverage, the database includes attacks and data from a global attack sensor-grid and exploits collected from public sites such as the National Vulnerability Database and Bugtrax.

D-Link commits to deliver high quality IPS signatures by constantly creating and optimizing the signatures via D-Link Auto-Signature sensor system. Without overloading the existing security appliances, D-Link IPS signatures ensure a high ratio of detection accuracy and a lowest ratio of false positive.

D-Link NetDefend Anti-Virus Subscription

NetDefend UTM Firewall implements Stream Based Virus Scanning technology without caching the incoming files first, thus increase the inspection performance of UTM Firewall, and ease the nightmare of network bottleneck while enabling antivirus feature on UTM Firewall.

NetDefend UTM Firewall adopts the Signatures from the Well-Known Kaspersky Lab to enable customers the prompt signature update time and high quality antivirus signatures.

Built-in extreme performance AV acceleration engine together with stream-based virus scanning technology, NetDefend UTM Firewall blocks virus and malware before they ever reach the desktops or mobile devices, thus creates a safer network environment for SMB and enterprises.

D-Link NetDefend Web Content Filtering Subscription

Web surfing is becoming a critical concern of enterprise business, D-Link Web Content Filtering service enforces protection and management policy in terms of Internet resources access for your organization.

NetDefend Web Content Filtering Subscription helps organizations Monitor, Manage, and Control employee usage of and access to Internet resources. It puts management back in control, enabling a more business orientated and cost effective usage of the Internet.

Allow organizations to gain significant cost savings through:

1)A reduction in wasted staff time (by reducing inappropriate web surfing).

2)Reduced Internet access costs and achieving bandwidth savings – by limiting and / or controlling non-business related use, and improve network response

3)Reducing legal exposure to work place relations (e.g. sexual harassment cases / child pornography and the adverse publicity that an incident would generate)

4)Reduced costs for recovering from an attack as less inappropriate content will be allowed to enter into the network.

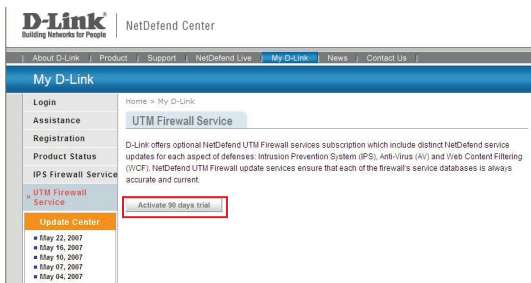
Activate your update service of UTM firewall

4

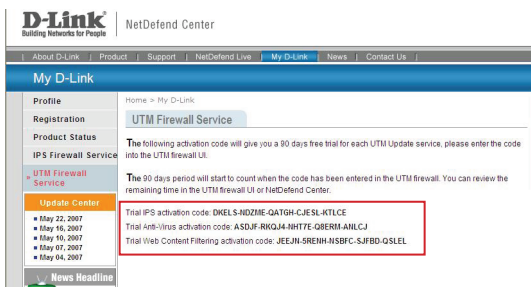
D-Link provides 90 days free trial for IPS, Anti-Virus and WCF service. After 90 days trial period expired, you need to subscribe NetDefend UTM Subscription Package and enter authentication code onto the device GUI to renew your either one of NetDefend UTM Service or all service combination you purchased.

How to activate 90 days free trial Update Service of UTM firewall?

1. Please login your account on NetDefend Center, and click “UTM Firewall Service” of My D-Link, and click “Activate 90 days trial” button.



2. You will get the all of trial activation codes for UTM Update Service.



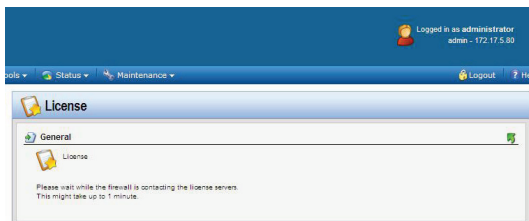
3. Login your firewall, point your mouse to “Maintenance” in the tool bar of firewall UI, and click “License” from the pull down menu. You can enter the trial activation code for UTM Update Service from here.

For Example: You want to activate IPS Update Service

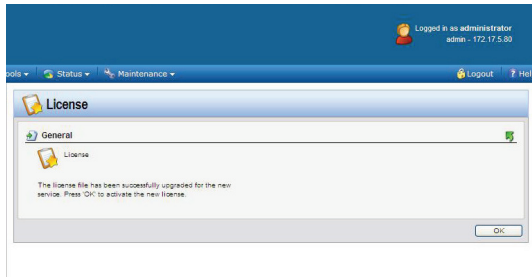
a. Enter the IPS trial activation code and click the “Activate” button



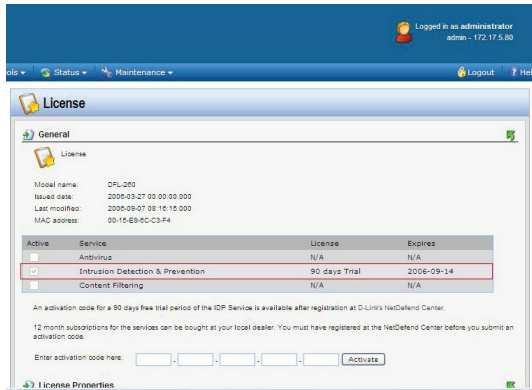
b. Firewall is contacting the License Server



c. Activate trial License successfully



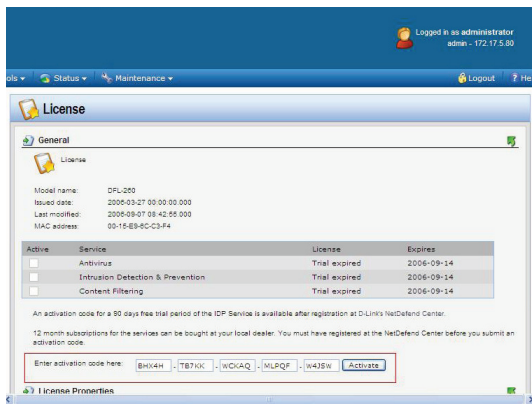
d. Trial IPS update service is enabled



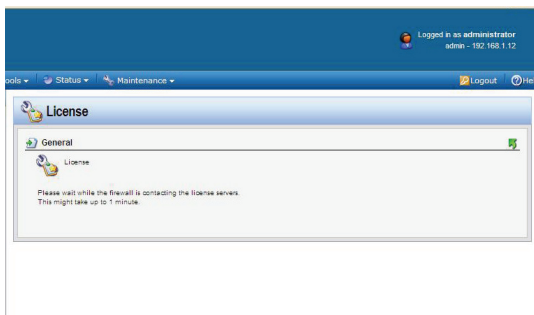
3. After receiving the service package, please find the authentication code on the license card.



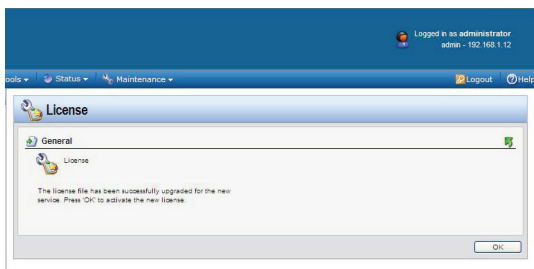
4. Login your firewall, point your mouse to “Maintenance” in the tool bar of firewall UI, and click “License” from the pull down menu. Enter the authentication code and click the “Activate” button



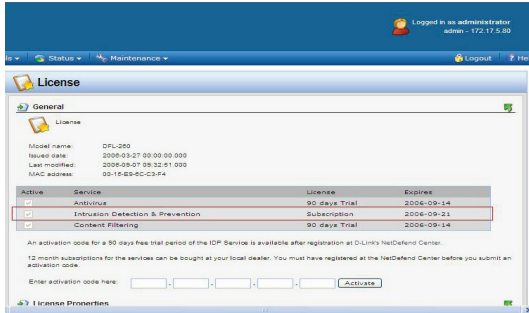
5. Firewall is contacting the License Server



6. Activate Subscription License successfully



7. IPS update service of NetDefend UTM Subscription you purchased is enabled.



Notes

D-Link[®]
Building Networks for People



2009/05/18
ver. 2.00
086W020000064