

DCS-1000W



- Web Based Remote Access Using Any Java Enabled Web Browser
- Integrated Web Server
- Connect Using 802.11b Wireless or Fast Ethernet
- Bundled Software for Multi-Camera Monitoring and Management
- Archive Streaming Video to your Hard Drive

# D-Link® *Air*™

## 2.4GHz Wireless Network Internet Camera

The D-Link*Air* DCS-1000W is a versatile 802.11b Wireless Internet camera with VGA quality resolution.

An ideal solution for remote security monitoring or broadcasting of live events over the Internet, the D-Link*Air* DCS-1000W combines the functionality of a video surveillance camera with the reliability and scalability of 802.11b Wireless and Fast Ethernet.

The DCS-1000W's built-in web server provides easy to use remote access from

anywhere in the world via the Internet using a standard Java-enabled web browser, such as Microsoft Internet Explorer or Netscape Navigator.

The bundled Windows based software further enhances the DCS-1000W's security features, allowing you to archive streaming video straight to your hard drive, monitor as many as 16 cameras on a single screen, and set up motion detection to trigger automatic recording.



# DCS-1000W 802.11b Wireless Internet Camera

## GENERAL SPECIFICATIONS

### General

- Built-in Web Server
- 802.11b wireless or 10/100Mbps network access

### Web Access Requirements

Any Java-Enabled or ActiveX compatible Web Browser. i.e. current versions of Microsoft Internet Explorer or Netscape Navigator

### Remote Management Software Requirements

Microsoft Windows XP, 2000, Me, 98SE or 98

### Video

- 1/3" CMOS Digital VGA Sensor
- 24-bit RGB color
- Resolution: 640x480, 320x240 or 160x120
- 5 Level User Selectable JPEG Compression Rate
- Frame Rate: 1, 5, 7, 15, 20 or Auto (actual performance depends on resolution, compression rate and network performance)
- File size and network bandwidth depends on actual image content, lightness/darkness of content, frame rate, compression level, resolution. Higher compression and low frame rate results in lower bandwidth requirements, while low compression and high frame rates result in higher network bandwidth and higher image quality.

### Exposure

- Gain Control: Automatic or Manual
- White Balance: Automatic or Manual
- Brightness Control: Slide bar or display 1-128
- Exposure: Automatic or Manual
- Contrast Control: Slide bar
- Hue Control: Slide bar
- Shutter: 1/60 ~ 1/15000 sec
- Minimum Illumination: 2.5lux@f1.4, 3000K color
- Warning: Never aim the camera directly at the sun or at extreme light sources. Doing so may cause unrecoverable damage to the CMOS sensor.

### Warranty

Limited 1-Year Warranty

### Lens

- Replaceable standard C/CS mount
- Focus: 20cm ~ infinity
- Manual Focus
- Aperture: F 1.8
- Focal Length: 6.0 mm

### System Settings

#### Main

- Camera Name & Location
- IP Address: Static or Dynamic
- Default Gateway Address
- DNS Address
- Manager ID (username)
- Manager Password
- Recover Default Values
- Wireless Network Name (ESSID)
- Wireless Channel
- Wireless 128-bit Encryption Key
- Open Second Port

#### Date/Time

- Synchronize with time server
- Set Manually

#### Trigger

- On/Off
- Send e-mail with image attachment
- SMTP server address
- Sender e-mail address
- Receiver e-mail address
- Sending Interval (time between each send)
- Sending Time (number of times an e-mail will be sent)

### Protocol Support

HTTP, TCP/IP, UDP, RARP, PING, ARP, DHCP, BootP, PPPoE

### Network Interface

- 802.3/802.3u NWAY Autosensing 10/100Mbps (RJ-45 Jack)
- Wireless 802.11b Wi-Fi compatible

### Firmware Updates

Via Web Interface or Remote Management Software

### Remote Management Software

- Remotely manage and control an unlimited number of DCS-1000W Internet Cameras

- Microsoft Windows XP, 2000, Me, 98SE and 98 compatible
- View 16, 9, 4 or 1 Camera on one screen
- Supports all management functions provided in web interface
- Record streaming video to hard drive in AVI format
- Motion detection to trigger automatic recording

### Hardware

- Power Supply: DC 5V/2.4A
- Power Requirements: 6.5Watt (1300mA X 5V)
- User Selectable Network Switch: LAN/ LAN&WAN/WAN
- Indoor Use Only. Outdoor Use Requires Protective Housing.
- Operating temperature: 5° ~ 50°
- Storage temperature: -25° ~ 50°
- Humidity: 5% ~ 95% non-condensing
- Size: 6.5 in length x 3.5 in width x 2.25 in height

### I/O Connector

- Used to connect external triggers (i.e. motion detection)
- Four I/O Ports, 2 x Input, 2 x Output
- I/O Status: Normally On
- 8-Pins Total
- Maximum Current: 100mA
- Output Voltage: DC 5V

### LED Indicator

- Power & Link
- Selectable LED Control: Normal, Off, Dummy

### EMI & Safety

- FCC Class A, CE, VCCI
- For Industrial Use Only

### Accessories Included

- 2 x 802.11b Wireless Antenna
- CAT5 Fast Ethernet Cable
- Stand with multi-angle connectors
- CD with Remote Management and ActiveX Software
- AC Power Adapter



D-Link Systems, Inc. 53 Discovery Drive Irvine CA 92618 www.dlink.com

©Copyright D-Link Systems, Inc. 2002. All rights reserved. D-Link® is a registered trademark of D-Link Systems, Inc. Other trademarks or registered trademarks are the property of their respective manufacturers or owners. Price and specifications are subject to changes without notice. See inside package for warranty details.

\* 24/7 Tech Support is available only in USA.

**D-Link**<sup>®</sup>  
Building Networks for People

# DCS-1000W 802.11b Wireless Internet Camera

## WIRELESS SPECIFICATIONS

### Data Rate Mbps/channel

- 11 : CCK
- 5.5 : CCK
- 2 : DQPSK
- 1 : DBSK

### Range

- Indoor - per cell approximately 114 to 328 feet
- Outdoor - per cell approximately 328 to 984 feet

### Encryption

- 64-bit, 128-bit or OFF

### Transmit Power

- Nominal Temp. Range: 17 dBm
- Extended Temp. Range: 14 dBm min.
- Transmit Power, 2.7v to 3v: 14 dBm min.

### Receive Sensitivity

#### **Nominal Temp Range:**

- 1 Mbps 10-5 BER @ -90 dBm, minimum
- 5.5 Mbps 10-5 BER @ -87 dBm, minimum
- 11 Mbps 10-5 BER @ -84 dBm, minimum

#### **Extended Temp Range:**

- 1 Mbps 10-5 BER @ -84 dBm, minimum
- 5.5 Mbps 10-5 BER @ -81 dBm, minimum
- 11 Mbps 10-5 BER @ -78 dBm, minimum

### Network Architecture

- Supports Ad-Hoc Mode (Peer-to-Peer without Access Point) or Infrastructure Mode (Communications to wired networks via Access Points with Roaming)
- Compliant with IEEE 802.11b Standards

### Antenna

- Internal patch antenna supporting diversity
- Mobility: Seamless roaming across cell boundaries within access point range

### Frequency Range

2.4 - 2.4835 GHz, Direct Sequence Spread Spectrum (DSSS)

### Operating Channels

- 1-11 United States (FCC)
- 1-11 Canada (DOC)
- 1-14 Japan (MKN)
- 1-13 Europe (Except Spain and France) (ETSI)

## POSSIBLE APPLICATIONS

**Office Security:** Add surveillance capabilities to your office or business and allows 24/7 access to all cameras.

**Day-care Center:** Allows parents to view day-care activities and check-in on their child/children.

**Stores:** Managers or owners can view store traffic during store hours and/or secure the store during off hours.

**Event Promotion:** Promote events or attractions with a live video feed of activities, letting customers or fans see what's going on.

**Tourist Attractions:** Allow potential tourists and/or customers to view key tourist attractions or locations.

**Hospital/Medical:** 24/7 remote monitoring of patients in hospital or home care environments.

**Construction Site:** Customer has 24/7 access to their construction site to monitor progress.

**Personal or Corporate Web Site:** Spruce up any web page with live streaming video. View the D-Link live streaming demo at <http://www.dlink.com/LiveDemo/>

## FEATURES

- Web-Based Remote Access
- Integrated Web Server
- View Live Streaming Video From Anywhere In The World
- 802.11b Wireless or 10/100Mbps
- Event triggered E-Mail Notification
- VGA Quality Resolution
- 5-Level JPEG Compression
- Complete Accessories Kit Included
- IPView Software Enhances Multi-Camera Monitoring and Management
- Record Streaming Video To Hard Drive
- Motion Detection to Trigger Recording
- Username/Password Management
- Secure Password Enabled Interface
- Secure 128-bit 802.11b WEP Encryption
- Dummy LED Option
- Works Great In Low Light Conditions
- Replaceable C/CS Lens



D-Link Systems, Inc. 53 Discovery Drive Irvine CA 92618 [www.dlink.com](http://www.dlink.com)

©Copyright D-Link Systems, Inc. 2002. All rights reserved. D-Link® is a registered trademark of D-Link Systems, Inc. Other trademarks or registered trademarks are the property of their respective manufacturers or owners. Price and specifications are subject to changes without notice. See inside package for warranty details.

\* 24/7 Tech Support is available only in USA.

**D-Link®**  
Building Networks for People



# D-Link<sup>®</sup> Air<sup>™</sup>

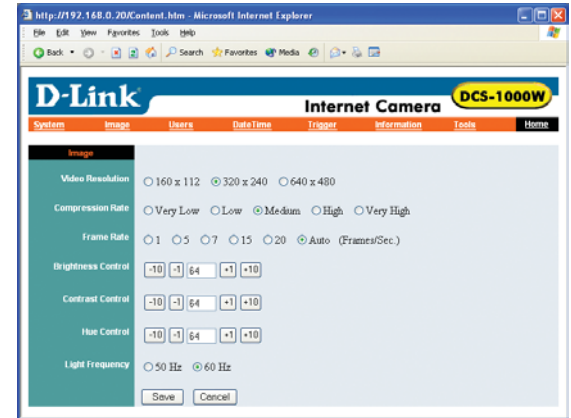
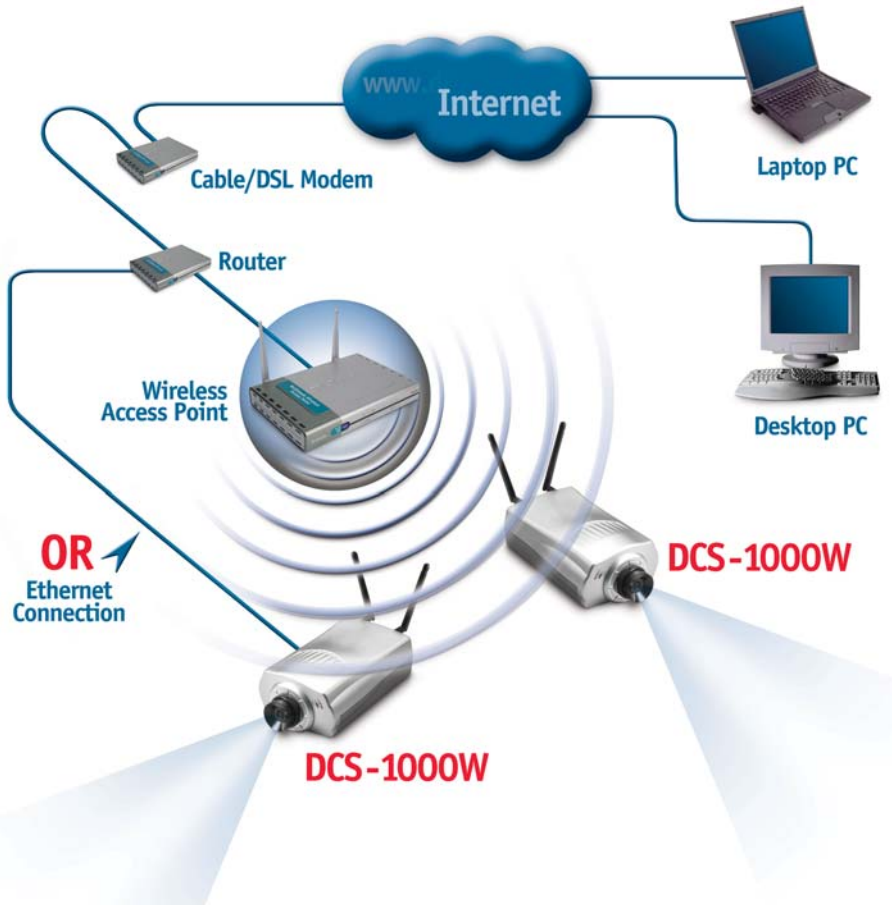
## 2.4GHz Wireless Network Internet Camera

### Typical File Sizes

Resolution	Compression Level*		
WxH	Low	Medium	High
120x160	81 kb	76 kb	54 kb
320x240	72 kb	64 kb	44 kb
640x480	66 kb	54 kb	38 kb

\* Numbers shown represent typical file sizes only. Actual file sizes may vary.

## Typical DCS-1000W Installation



Access the Web Interface using any Java-Enabled Web Browser



View up to 16 Cameras Using the Included IPView Management Software

### Product Information

Part No: DCS-1000W  
 Description: 802.11b Wireless Internet Camera  
 UPC: 790069-241536  
 D-Link Systems, Inc.  
 TEL: (877) 45D-LINK  
 www.dlink.com

### Package Contents

- DCS-1000W
  - Software & Documentation on CD-ROM\*
  - Stand & Mounting Brackets
  - AC Power Adapter
  - 2 x Wireless Antenna
  - Installation Guide
  - Manual
  - CAT5 Cable
- 1: Latest Software and Documentation are Available at <http://support.dlink.com>



D-Link Systems, Inc. 53 Discovery Drive Irvine CA 92618 www.dlink.com

©Copyright D-Link Systems, Inc. 2002. All rights reserved. D-Link<sup>®</sup> is a registered trademark of D-Link Systems, Inc. Other trademarks or registered trademarks are the property of their respective manufacturers or owners. Price and specifications are subject to changes without notice. See inside package for warranty details.

\* 24/7 Tech Support is available only in USA.

# D-Link<sup>®</sup>

Building Networks for People