

# D-Link Quick Installation Guide

This product works with the following operating systems:  
Windows XP, Me, 2000, 98 Second Edition, Macintosh OS X v10.2



## DBT-120

PersonalAir™ USB  
Bluetooth Adapter

## Before You Begin

You must have at least the following:

- Windows XP/Me/2000/98SE or Macintosh OS X v10.2
- One Available USB Port
- CD-ROM Drive

## Check Your Package Contents

These are the items included with your purchase:



- DBT-120 USB Bluetooth Adapter



- CD-ROM (containing Drivers, Installation Guide, Manual, and Warranty)




- USB Extension Cable

If any of the above items are missing, please contact your reseller.

# 1 Installing the Bluetooth Software for Windows

**Insert** the **D-Link PersonalAir DBT-120 Driver CD** in the CD-ROM drive.

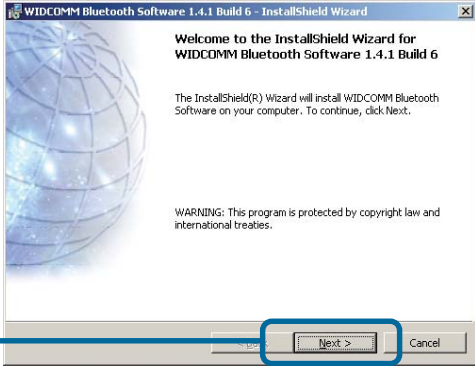
If this Autorun screen does not automatically appear, click on **Start > Run**, enter "**D:\Autorun.exe**" and click **OK**. "**D**" represents the letter of your CD-ROM drive.

 **Install the driver and software on the D-Link CD BEFORE installing the DBT-120 USB Bluetooth Adapter into your computer.**

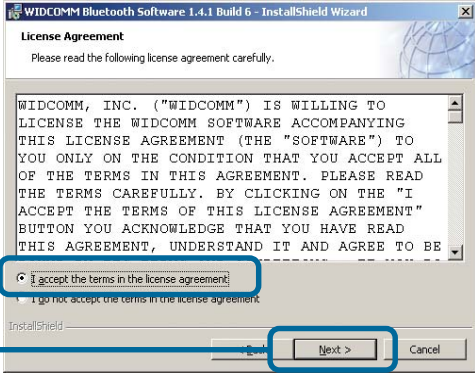
Click **Install Bluetooth Software**



Click **Next**



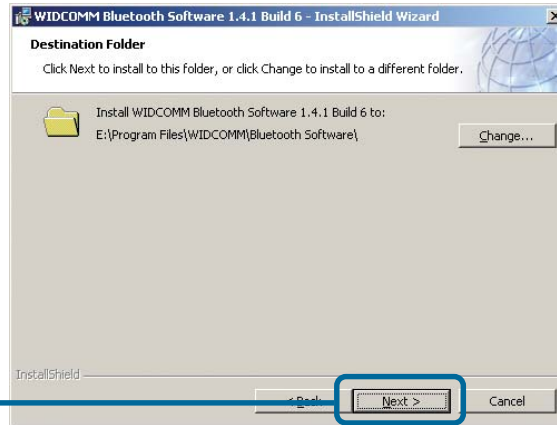
Click **Accept**



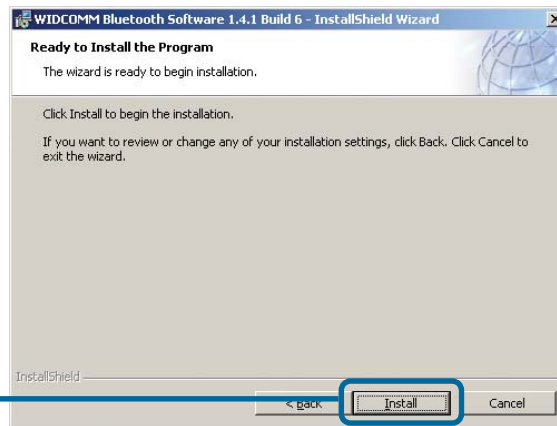
Click **Next**

# 1 Installing the Bluetooth Software for Windows *(continued)*

Click **Next**

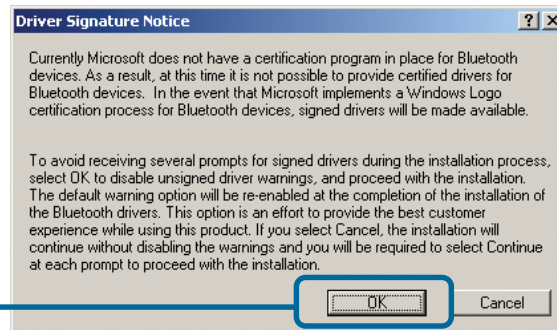


Click **Install**



Only **Windows XP** and **Windows 2000** Users will see this screen.

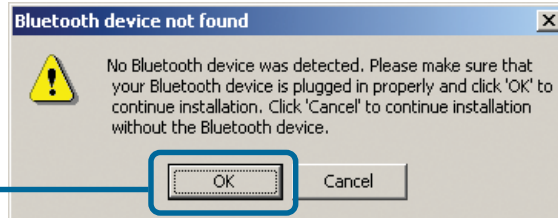
Click **OK**



# 1 Installing the Bluetooth Software for Windows *(continued)*

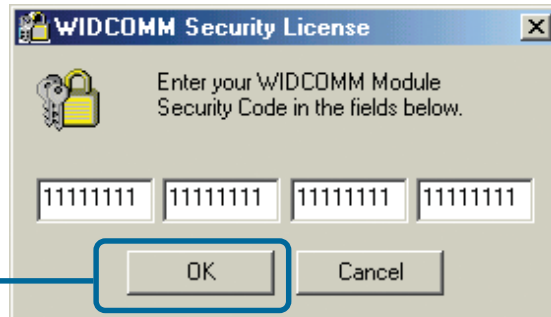
When this screen appears, connect the **DBT-120** to an available USB port on your USB host adapter or USB hub.

Click **OK**



A 32-digit security code is included with your **DBT-120** and is located on your driver CD cover \*. Carefully enter the security code to access the software\*\*.

Click **OK**



\*If you have misplaced or lost the security code included with your **DBT-120**, you can obtain the security code from this site: <http://66.45.42.85/dlink/>. You will be asked for your **DBT-120's BD Address**, which is a unique 12-digit number that identifies your product. The **BD Address** is located in the **MAC:** field on the back label of the **DBT-120**. Once you fill out the required information on the webpage and submit your request, the security code will be emailed to you.

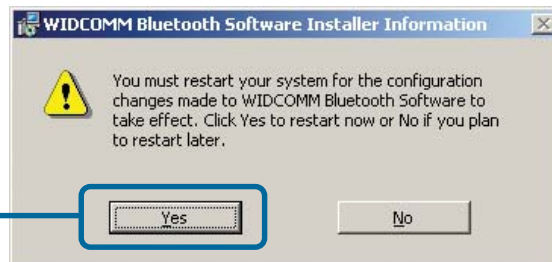
\*\*If you cannot access your **DBT-120** using the software, the security code was entered incorrectly and a "Security code not found" dialog box will appear when you are running **My Bluetooth Places**. To re-enter the correct security code, double click on the **BTFAe.exe** file on the driver CD or go to **Start > Program > Widcomm > Bluetooth Software > bin > BTFAe.exe**

# 1 Installing the Bluetooth Software for Windows *(continued)*



Click **Finish**

Only **Windows 2000**, **Windows Me**, and **Windows 98SE** Users will see this screen.



Click **Yes**

# 2 Using the Bluetooth Configuration Wizard

After you have completed the driver and software installation and reboot your computer, a Bluetooth icon will appear on your desktop and in the bottom right hand corner of your desktop screen (systray). The Bluetooth icon gives you access to **My Bluetooth Places**, for configuring your Bluetooth settings.

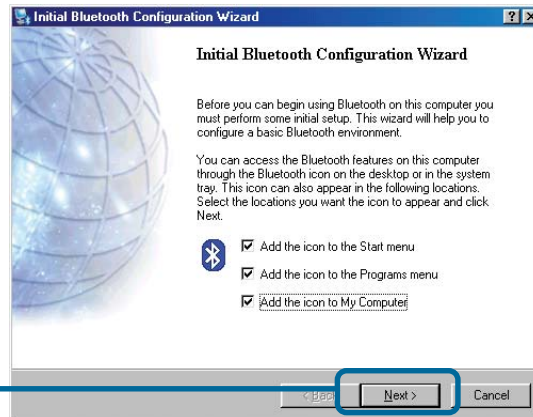
Double-click the **Bluetooth** icon for access to **My Bluetooth Places**.



## 2 Using the Bluetooth Configuration Wizard (continued)

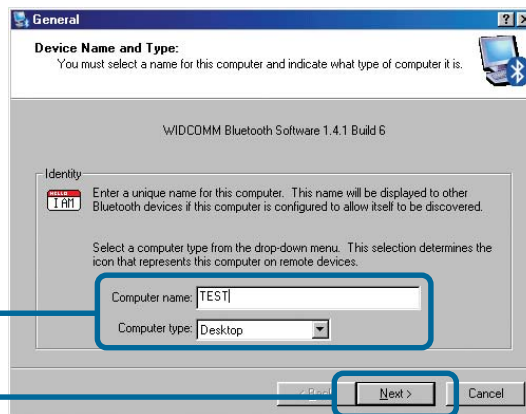
The **Bluetooth Configuration Wizard** launches the first time that you double click on **My Bluetooth Places**.

Click **Next**

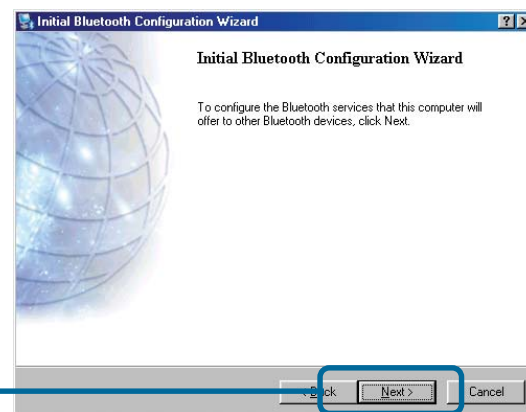


Type a unique name for your **Computer**. Select **Desktop** or **Laptop**

Click **Next**



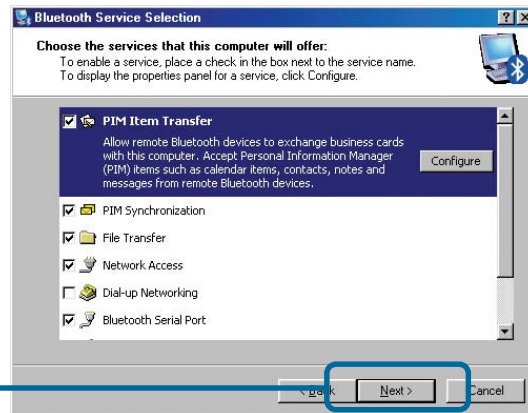
Click **Next**



## 2 Using the Bluetooth Configuration Wizard (continued)

Select the Services that your **DBT-120** will provide to other Bluetooth products.

Click **Next**

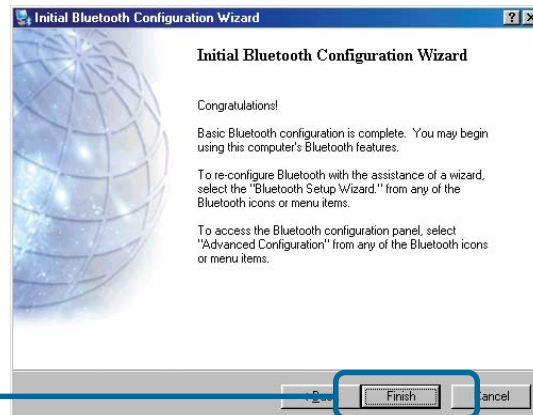


You can choose to configure your other Bluetooth devices at this point. Otherwise, click **Skip** to finish the configuration for your **DBT-120**.

Click **Skip**



Click **Finish**





## 3 The Installation is Complete!

The **DBT-120 USB Bluetooth Adapter** is now able to connect to other Bluetooth devices and your setup is complete! For detailed explanations on using the Bluetooth software for Windows and troubleshooting tips, please refer to the **DBT-120 Manual** on the CD included with this product.

## 4 DBT-120 Installation for Macintosh OS X v 10.2

Macintosh OS X 10.2 has built-in Bluetooth support for a true plug and play experience. Simply insert the **D-Link DBT-120 USB Bluetooth Adapter** into an available USB port on your Macintosh OS X v10.2 and the installation will proceed automatically.

Insert the **DBT-120** into an available USB port on your Macintosh desktop or laptop.





## Technical Support

You can find software updates and user documentation on the D-Link website.

D-Link provides free technical support for customers within the United States and within Canada for the duration of the warranty period on this product.

U.S. and Canadian customers can contact D-Link Technical Support through our website, or by phone.

### Tech Support for customers within the United States:

***D-Link Technical Support over the Telephone:***

(877) 453-5465

24 hours a day, seven days a week.

***D-Link Technical Support over the Internet:***

<http://support.dlink.com>

[email:support@dlink.com](mailto:support@dlink.com)

### Tech Support for customers within Canada:

***D-Link Technical Support over the Telephone:***

(800) 361-5265

Monday to Friday 8:30am to 9:00pm EST

***D-Link Technical Support over the Internet:***

<http://support.dlink.ca>

[email:support@dlink.ca](mailto:support@dlink.ca)

